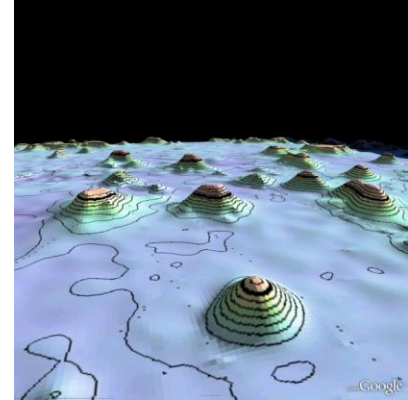
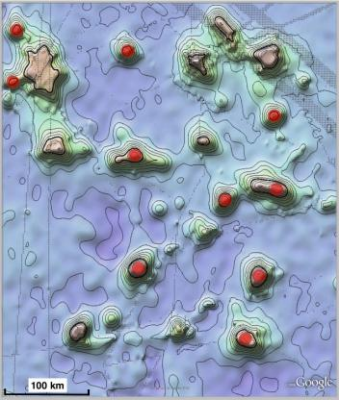


# Seamount Discovery Tool

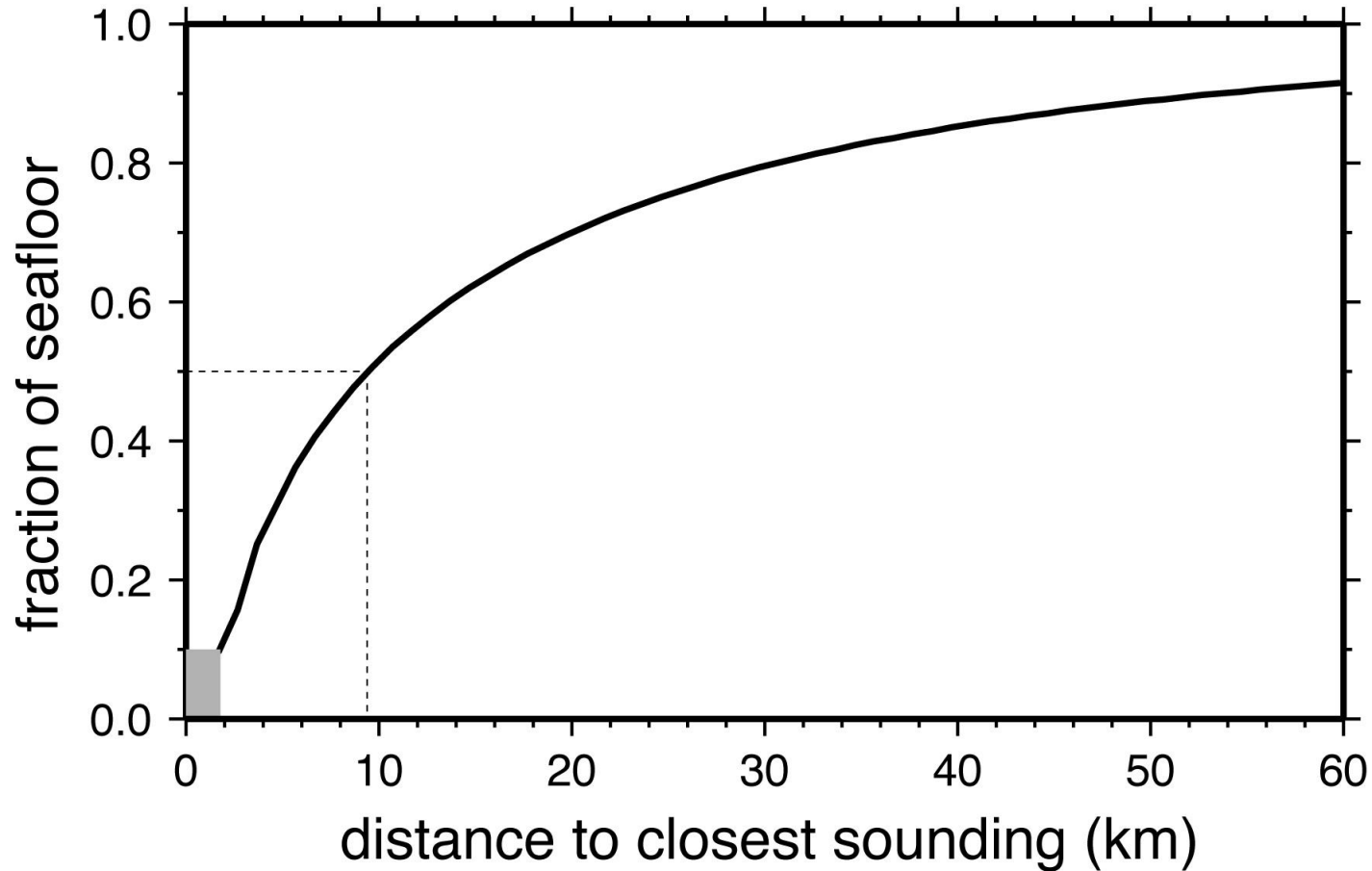
Megan Jones and David Sandwell  
Scripps Institution of Oceanography



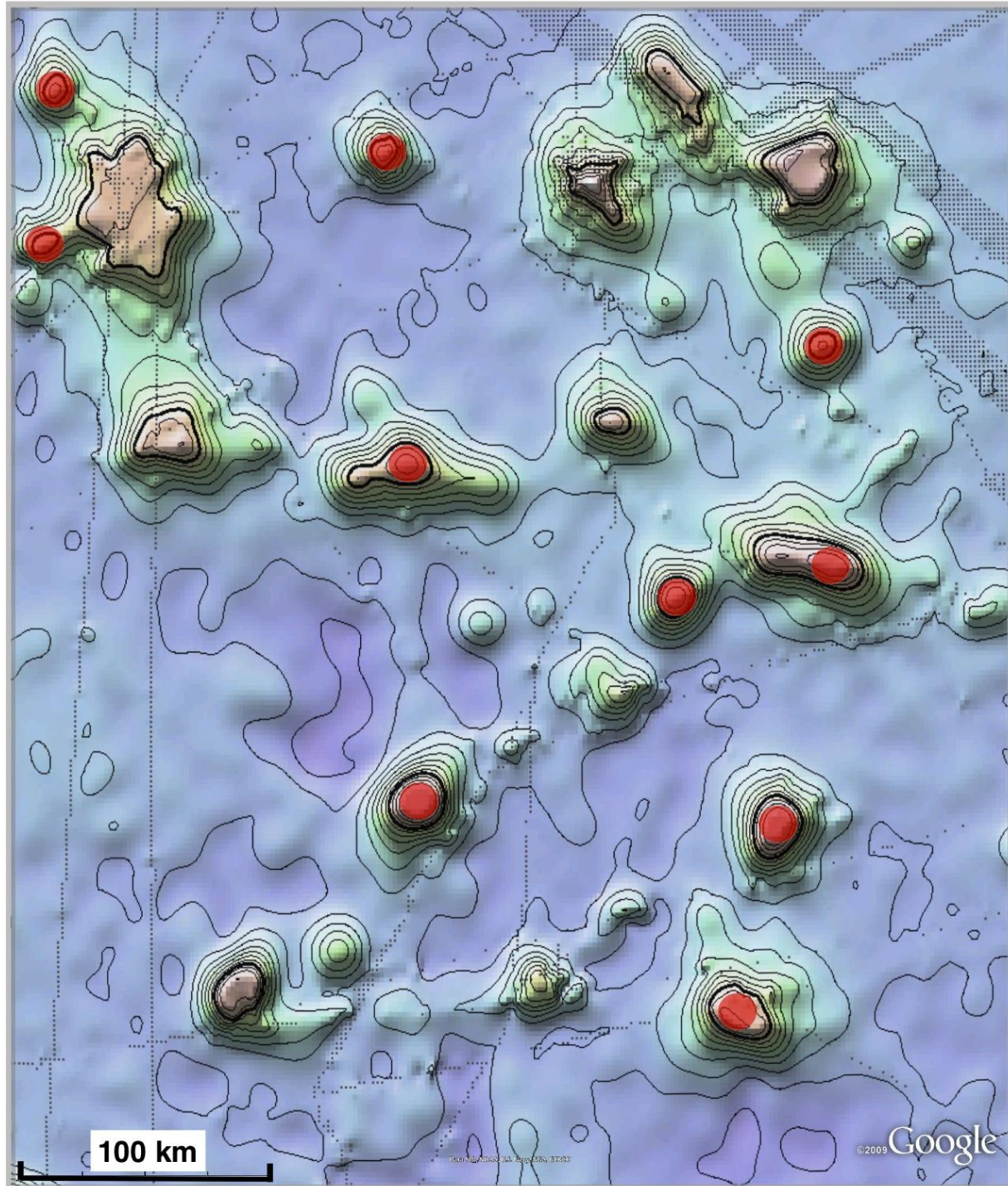
- Created as an efficient way for ships of opportunity to plan routes that travel over uncharted seamounts.
- Most seamounts  $< 2$  km tall are uncharted
- Seamount exploration strategies
  - acquire and edit existing data (see poster)
  - ships of opportunity and Google Earth
  - satellite altimetry
- Discovery tool uses Google Earth and a GPS

Wessel, P., D. T. Sandwell and S-S. Kim, *The global seamount census*, [Oceanography, 23:1 p. 24-33, 2010.](#)  
Sandwell, D. T., and P. Wessel, *Seamount discovery tool aids navigation to uncharted seafloor features*,  
[Oceanography, 23:1 , p. 24-26, 2010.](#)

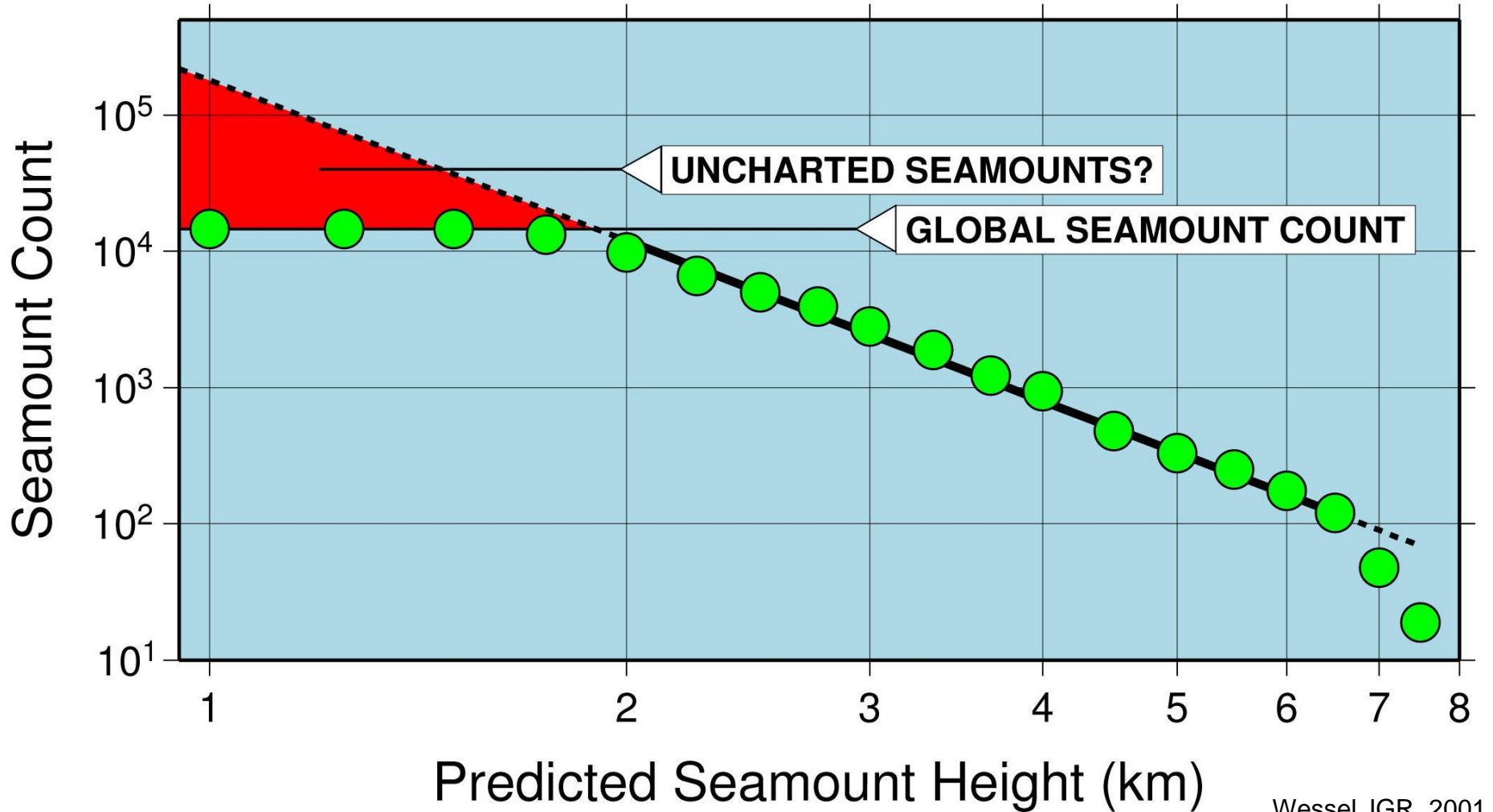
# 1/2 of global seafloor bathymetry not resolved at 10 km resolution



**uncharted  
seamounts  
> 3 km tall**



# size distribution of seamounts



# Seamount Exploration Strategies

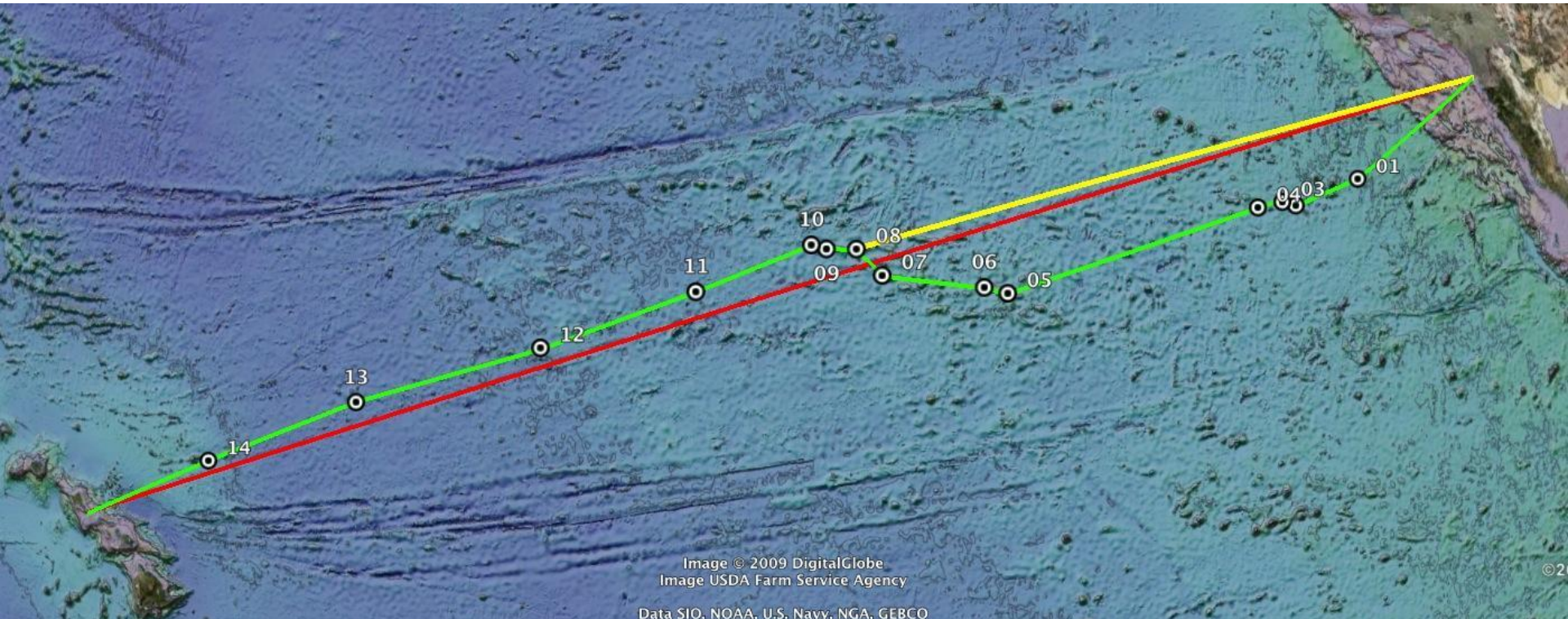
- Existing data
- Ships of opportunity and Google Earth (GE)
  - GE to encourage data sharing
  - GE as a real-time survey tool**
- Satellite altimetry
  - Cryosat II (launch April 2010)
  - Other non-repeat orbit altimeters

# San Diego to Honolulu - White Holly - May 2009

red - great circle = 4180 km

green – 14 new seamounts = 4300.1 km (1.028)

yellow - 7 new seamounts = 4189.7 km (1.0023)

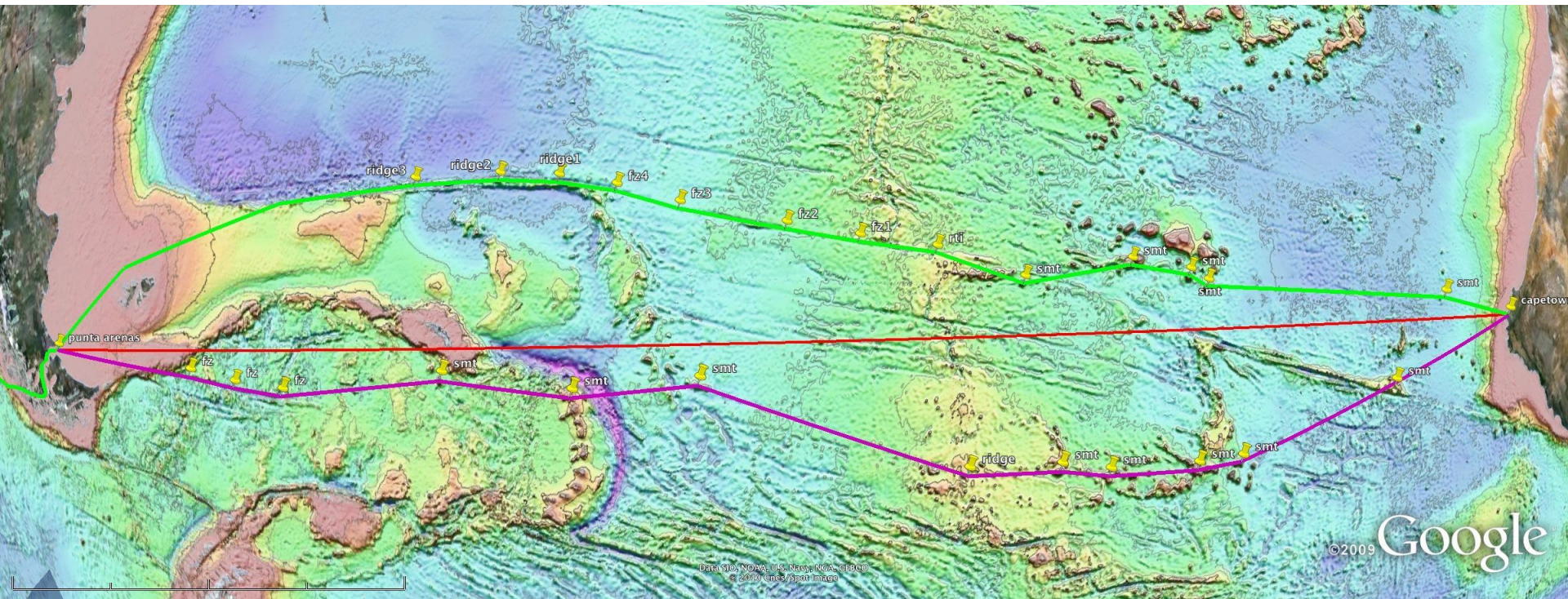


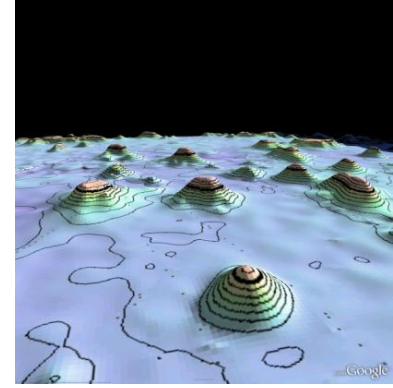
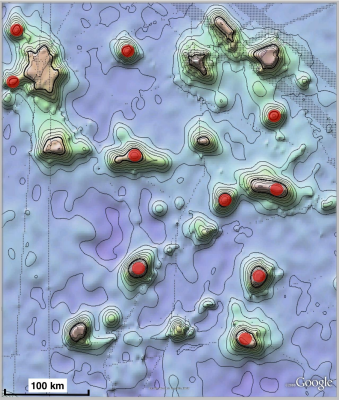
# Capetown to Punta Arenas - Melville - Feb, 2011

red - great circle = 6896 km

green - 10 new seamounts = 7130 km (1.034)

violet - 11 new seamounts = 7069 km (1.025)





## Setup real-time GPS with Google Earth

### *Hardware*

- 1) Laptop computer with USB port (PC or Mac)
- 2) Garmin GPS Map 60 (\$249.99)(many other GPS makes/models also work)
- 3) USB Cable (\$14.99)
- 4) External antenna (\$31.49)

### *Software and Data*

- 5) Google Earth software
- 6) Bathymetry overlays in kmz format (<http://topex.ucsd.edu>)
- 7) Start GE go to Tools > GPS
- 8) Realtime Garmin PVT
- 9) Trackpoint import limit 100

Polling interval 10 sec. If the value is lower than 5 sec the position icon will not display. (May need to cycle GPS power and trash the realtime entry in temporary places.)