



Shell  
OCEAN DISCOVERY XPRIZE<sup>®</sup>

# GEBCO-Nippon Foundation Alumni Team's solution for Shell Ocean Discovery XPRIZE Competition

presented on behalf of the GNFA Team by  
**Yulia Zarayskaya**  
*Geological Institute of Russian Academy of Science*



GEBCO Symposium: Map the Gaps  
Portsmouth, 2019





# Shell OCEAN DISCOVERY XPRIZE<sup>®</sup>

A \$7 million global competition challenging teams to advance deep-sea technologies for autonomous, fast and high-resolution ocean exploration.

Create solutions that advance the autonomy, scale, speed, depths and resolution of ocean exploration

<http://oceandiscovery.xprize.org>

**Preliminary phase** (Dec 2016): written description of the proposed solution

**Round 1** (Nov 2017)  
Min. **100 km<sup>2</sup>** in **16 hours**  
**48 h** of data processing  
Max. Depth – **2,000 m**

**Round 2** (Nov 2018)  
Min. **250 km<sup>2</sup>** in **24 hours**  
**48 h** of data processing  
Max. Depth – **4,000 m**



# Shell OCEAN DISCOVERY XPRIZE®



GEBCO-NF Alumni



**Dr Rochelle Anne Wigley**  
Project Coordinator and Management



**Dr Yulia Zarayskaya**  
Geologist and Data Product Developer



**Dr Karolina Zwolak**  
Hydrographer and Sonar Specialist



**Jaya Roperez**  
Hydrographer and Data Processor



**Hadar Sade**  
Hydrographer and GIS Specialist



**Neil Timmouth**  
Project Management and Business Development



**Dr Evgenia Bazhenova**  
Geologist and Data Product Developer



**Masanao Sumiyoshi**  
Hydrographer and Data Processor



**Seeboruth Sattiabaruth**  
Surveyor



**Christina Lacerda**  
Hydrographer and Cartographer



**Tomer Ketter**  
Hydrographer



**Ivan Ryzhov**  
Geologist



**Dr Mohamed Elsaied**  
Geophysicist



**Andres Fitzcarrald**  
Hydrographer



**Aileen Bohan**  
Hydrographer and Data Processor



**Bob Anderson**  
GEBCO



**Robin Falconer**  
GEBCO



**Lcdr Azmi Rosedee**  
Hydrographer and Data Manager



**Timothy Kearns**  
Numarus



**Benjamin Simpson**  
Hushcraft Ltd.



**Dr Alison Proctor**  
Technical Operations Manager  
Subsea Project Engineer, OFG

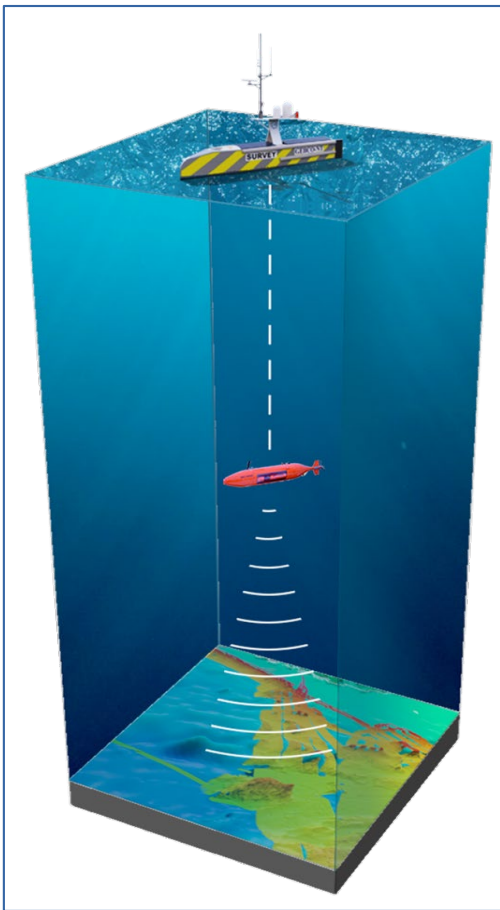


**Dr Wetherbee Dorshow**  
GIS Specialist  
Earth Analytic





# Shell OCEAN DISCOVERY XPRIZE<sup>®</sup>



New **autonomous surface vessel** capable of AUV deployment & retrieval

- Hushcraft Limited SEA-KIT *USV Maxlimer* with KM HiPAP
- Remote and Autonomous operations facilitated by Kongsberg Maritime K-MATE

### **Kongsberg Maritime HUGIN AUV**

- Round 1: Ocean Floor Geophysics *Chercheur* AUV: 3,000 m
- Round 2: Kongsberg Maritime: 4,500 m

### **Seafloor bathymetry and imagery**

- Fusion of EM2040 & EM304 MBES, HISAS real aperture bathymetry, HISAS synthetic aperture bathymetry and side-scan imagery
- Spot-focused synthetic aperture HISAS imagery and bathymetry

## **ROUND 2 PRODUCTS**

### **SURFACES**

- 5 m resolution grid of overall combined bathymetric dataset
- 2 m resolution grid of HISAS1032 wide-area mode data
- 1 m resolution grid of standard HISAS1032 mode data
- 1 m resolution grid of EM2040 data
- 5 m resolution grid of EM304 data

### **IMAGERY**

- 10 cm resolution mosaic of standard HISAS1032 mode
- 1 m resolution mosaic of HISAS1032 wide-area mode
- 1 m resolution mosaic of EM2040 backscatter
- 2 cm resolution Spot processed side-scan images of objects (produced using KM Reflection software)
- 3D images: bathymetry drapes (produced using Fledermaus), point cloud images (using Qimera) produced remotely at UNH





# Shell OCEAN DISCOVERY XPRIZE®



## ROUND 2 WORK HUBS

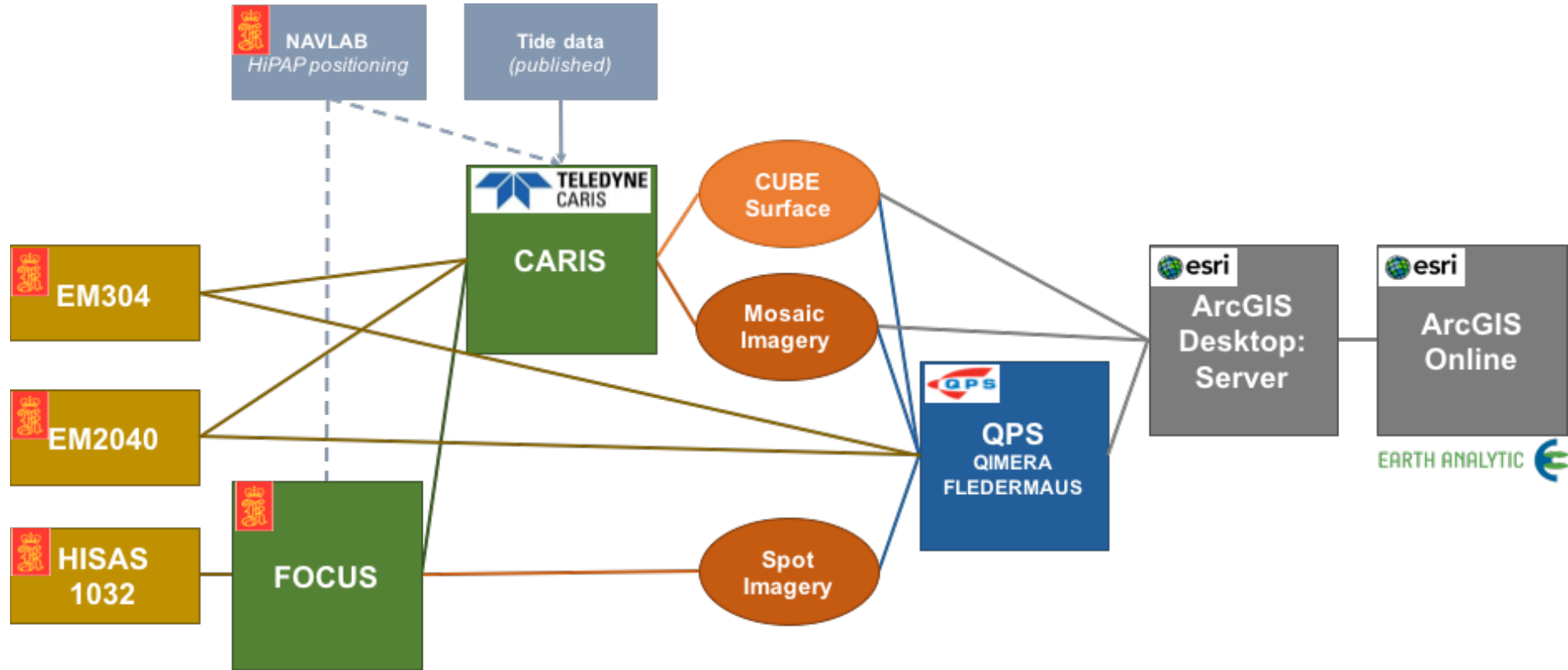
1. Survey equipment
2. Operations Center
3. Data Processing ('Mission Control')

+ NETWORK





# Shell OCEAN DISCOVERY XPRIZE<sup>®</sup>



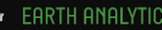
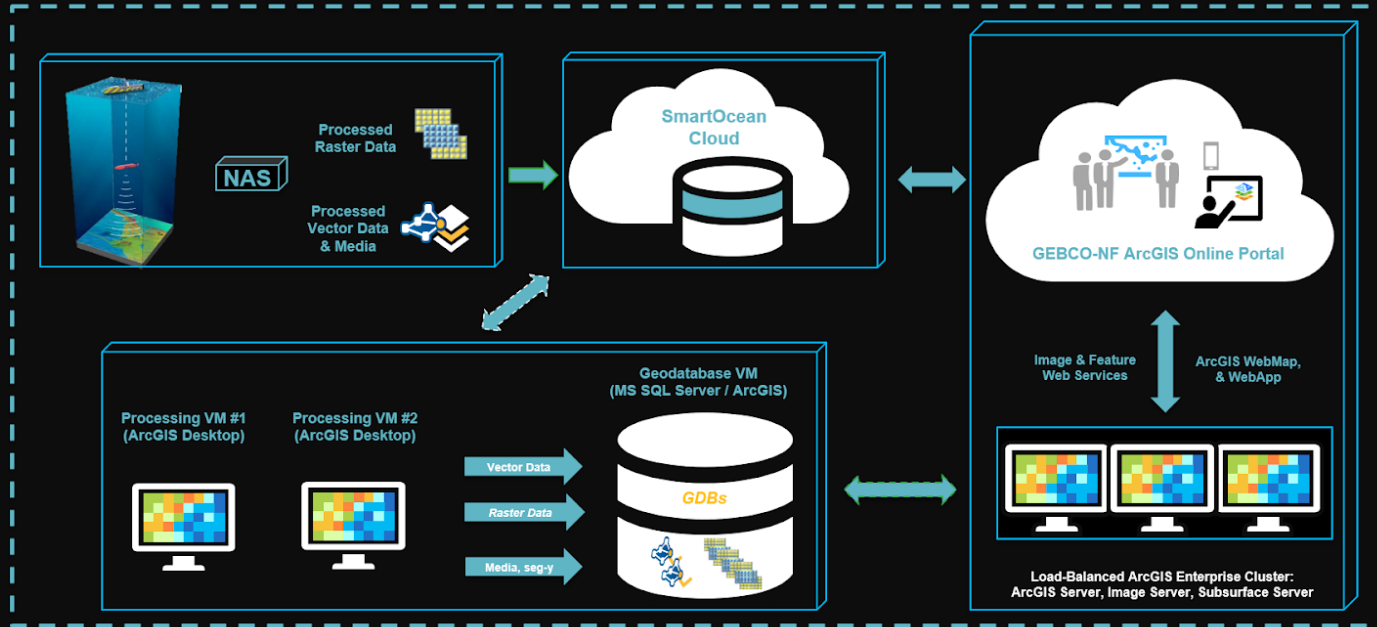
Automated work flow – data to information



# Shell OCEAN DISCOVERY XPRIZE®



## GEBCO NF Alumni Geospatial Architecture







# Shell OCEAN DISCOVERY XPRIZE®

GEBCO-Nippon Foundation Ocean Discovery Xprize Round 2 Finals Web App Team Website

**Layer List**

- Round\_2\_finals\_mission\_plan - missionplan\_HU\_corr\_UTM34N
- Round\_2\_finals\_mission\_plan - missionplan\_SK\_corr\_UTM34N
- Round\_2\_finals\_mission\_plan - missionplan\_HU\_corr\_UTM34N\_line
- Round\_2\_finals\_mission\_plan - missionplan\_SK\_corr\_UTM34N\_line
- Sound Velocity Profile Cast Location
- Navigation Lines
- Mission Plan
- Competition Area Zones
- Point Cloud Image Locations & Links
- NCEI Multibeam Bathymetry Mosaic: Shaded Relief Visualization
- NCEI Multibeam Bathymetry Mosaic
- Imagery Layer Group (Expand to access layers)
- Bathymetry Subset Layer Group (Expand to access layers)
- Bathymetry Composite 5m Dataset
- Bathymetry Composite 5m Dataset - Hillshade

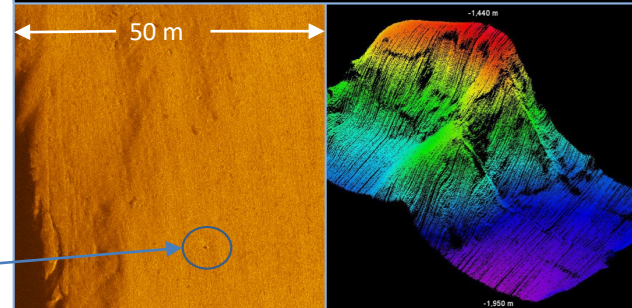
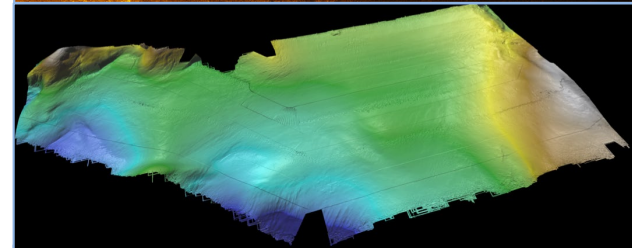
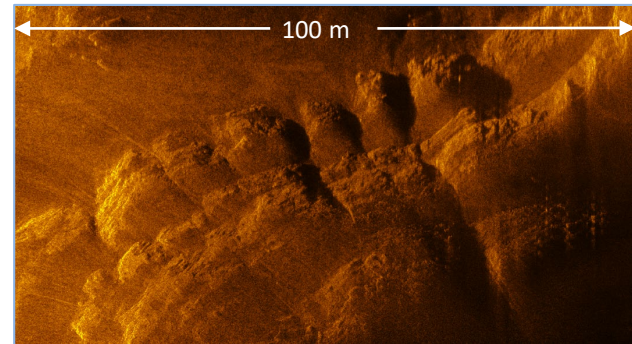
**Images\_LatLon\_UTM34N**

ID 8  
Lon 21.78  
Lat 36.63

Attachments:  
8\_westNorthSwath.jpg

Zoom to

22.367 36.731 Degrees

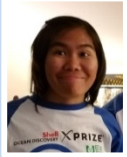
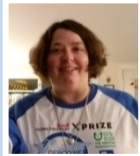


Object - Size: 0.33 x 0.49 m; Height: 0.14 m





# Shell OCEAN DISCOVERY XPRIZE®



Thank you