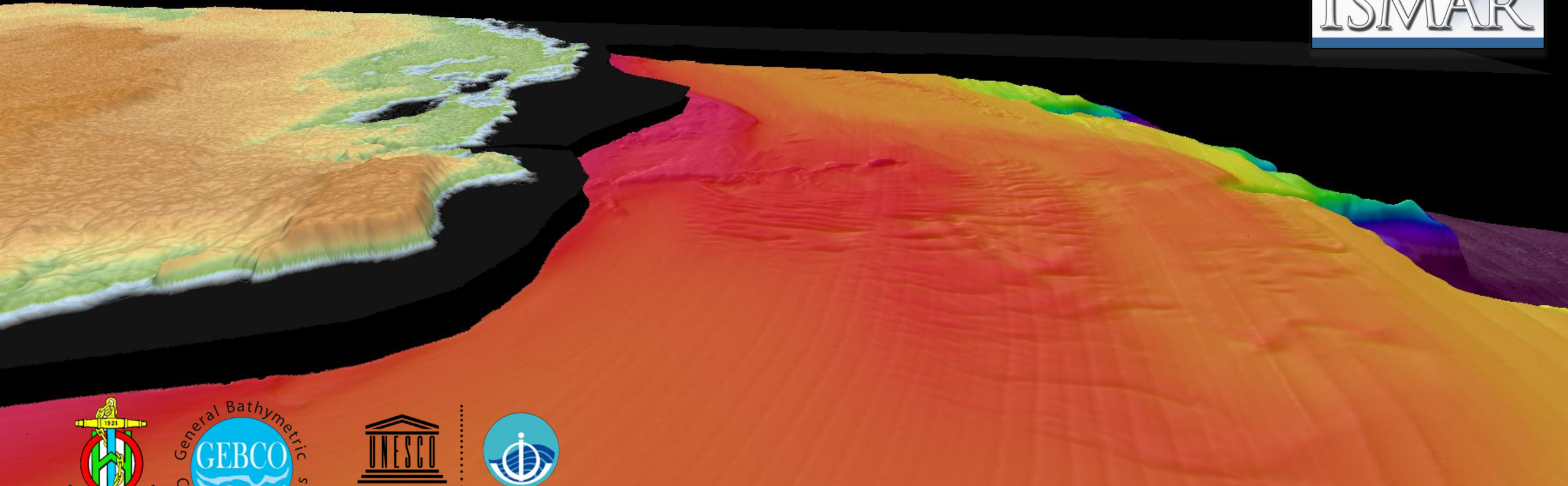


# *Impact of dense bottom water on a continental shelf: an example from the SW Adriatic Margin*

Marzia Rovere <sup>1</sup>, Claudio Pellegrini <sup>1</sup>, Jacopo Chiggiato <sup>2</sup>, Elisabetta Campiani <sup>1</sup>, Fabio Trincardi <sup>1</sup>

<sup>1</sup> ISMAR CNR, Via P. Gobetti 101 – 40129 Bologna, Italy

<sup>2</sup> ISMAR CNR, Arsenale - Tesa 104 Castello 2737/F -30122 Venezia, Italy

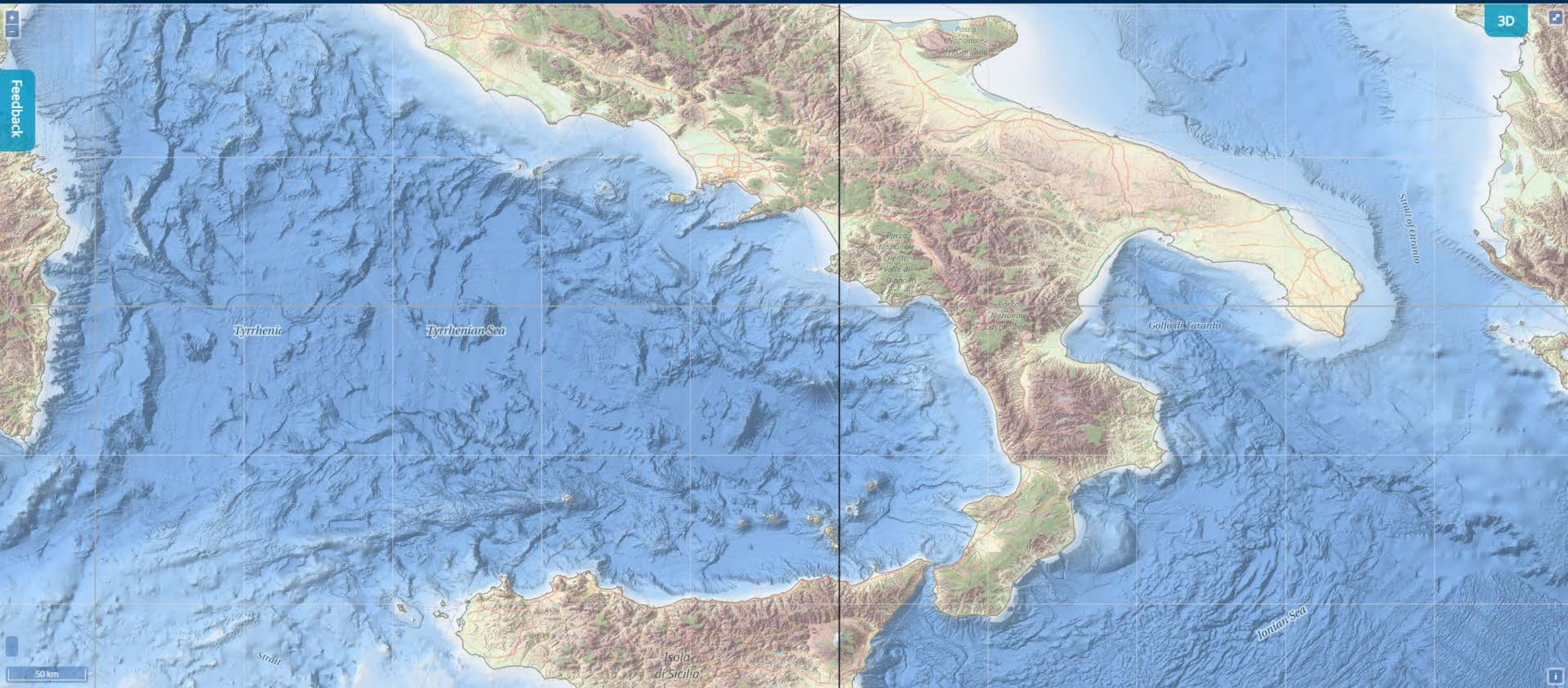


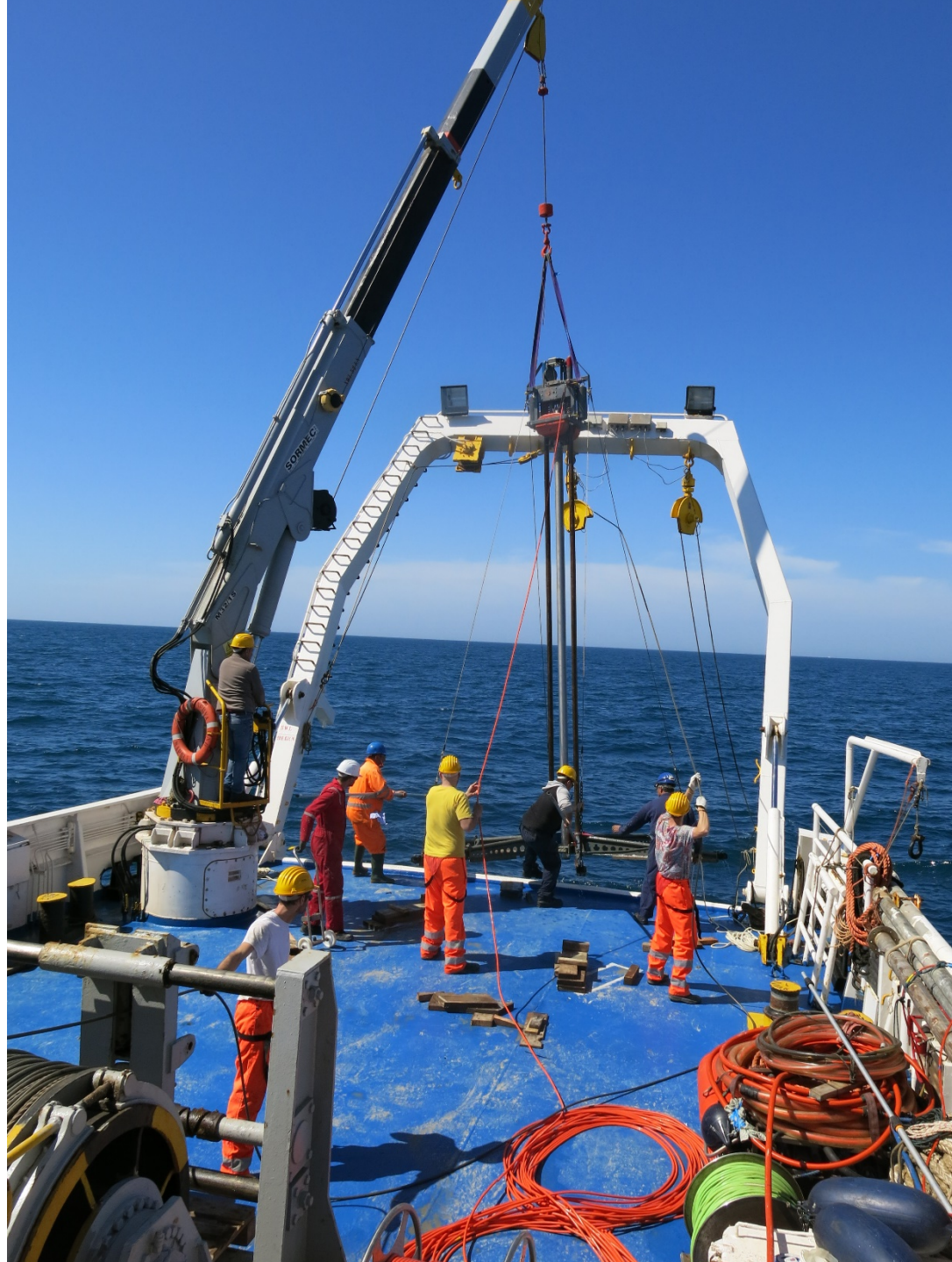
United Nations  
Educational, Scientific and  
Cultural Organization



Intergovernmental  
Oceanographic  
Commission

14 November 2018 - Canberra,  
Australia

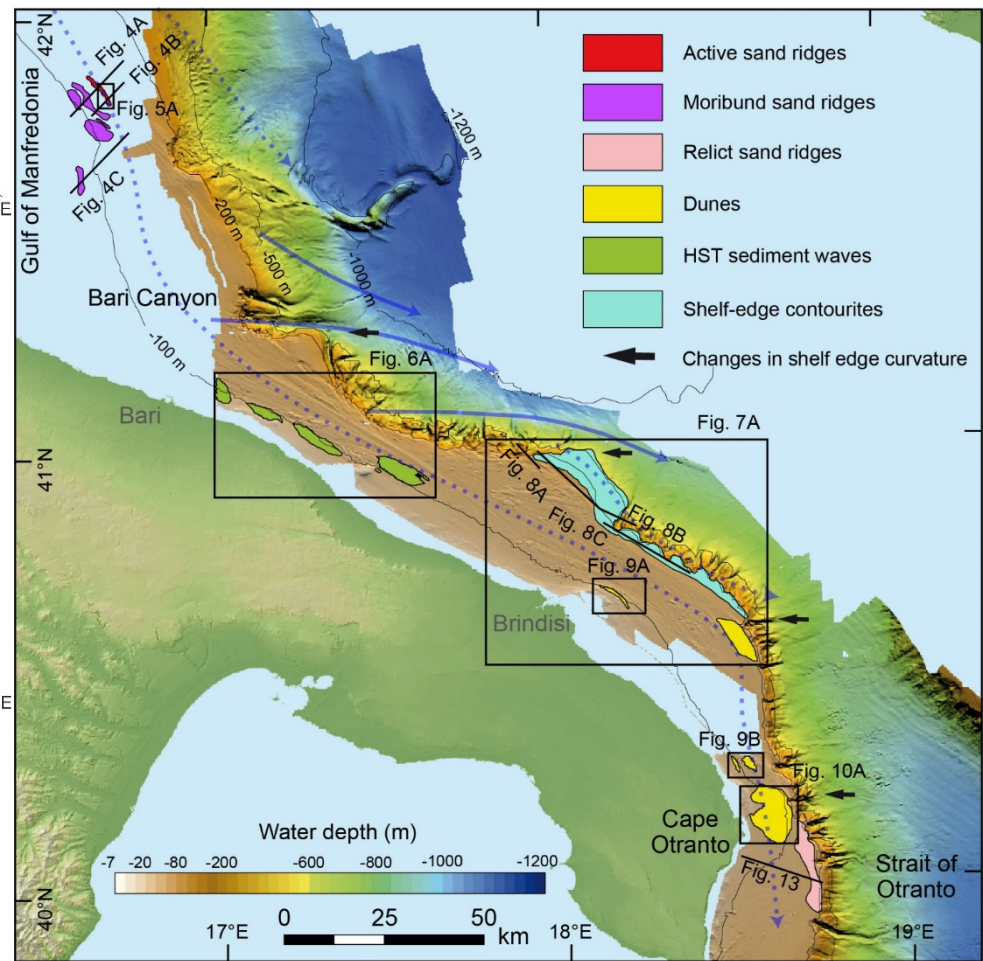
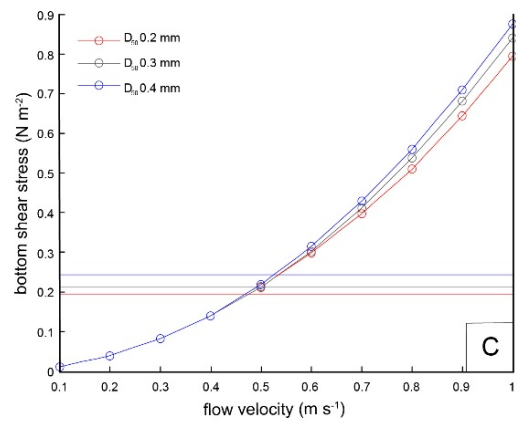
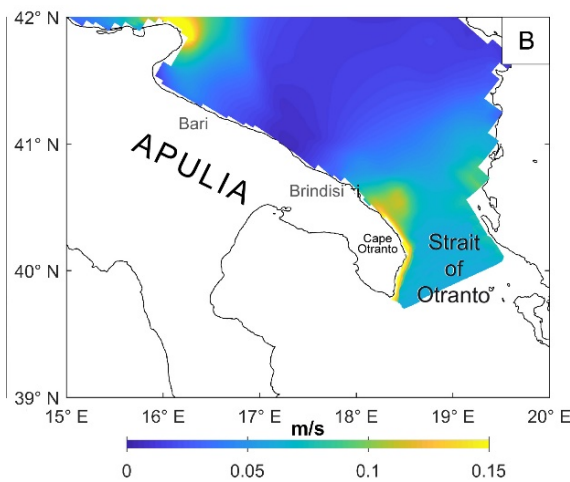
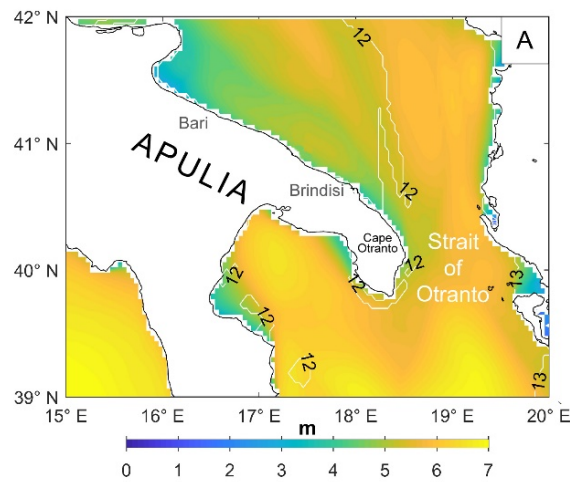
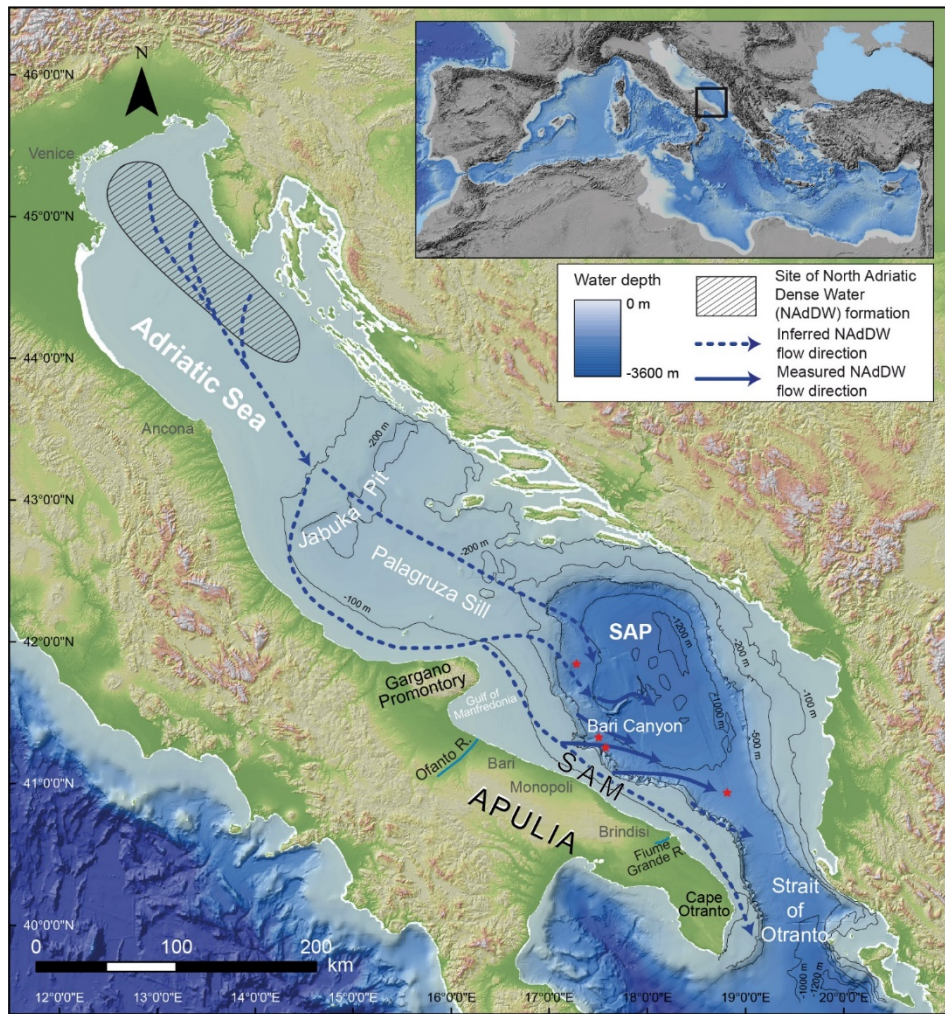


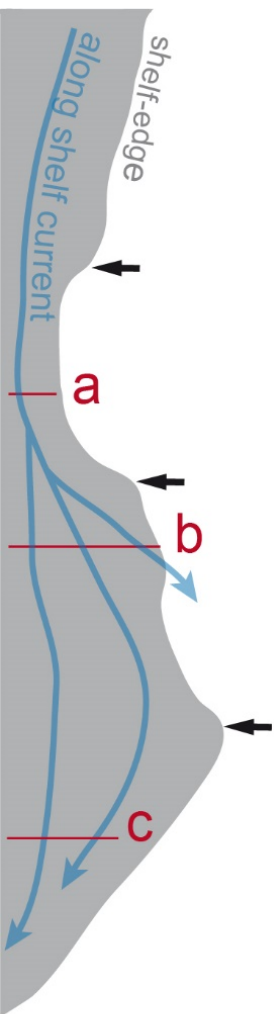


CNR ISMAR NAVIGAZIONE MARITTIMA MACROAREA:  A  B  C  
 UOS Bologna nome CAMPAGNA: SAND16 DATA: 18/04/2016

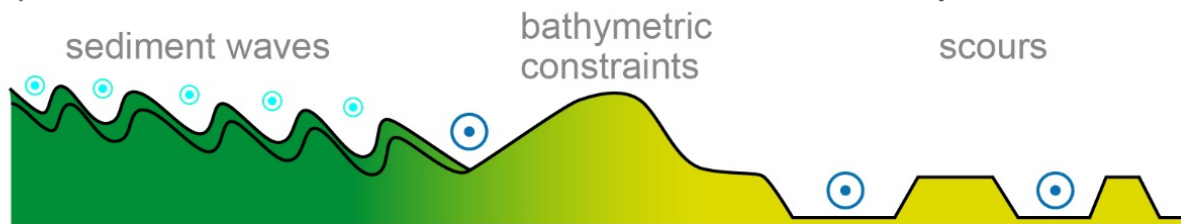
8° DUEMILA da Nord  
 Descrizione sintetica:

sabbia fine con gastero- podi di dimensioni centimetri che e subacque metuche	Tipo campionamento: <b>Vibrocarotaggio</b> Lunghezza: 6m Diametro: 110 mm Ora UTC (vibro a mare): 5:13
sabbia media compatta e sterile	Ora UTC (fondo): 5:18 Ora UTC (vibro a bordo): 5:30 Latitudine (fondo): 40.1622 Longitudine (fondo): 18.6120
sabbia media con detriti conchiglie e vallette poranti	Datum: UTM33 WGS84 Profondità (m): 91.3 Cavo contam.
sabbia media presenta di volta acque dense alla vibrazione	Penetrazione (m): Recupero (m): 5.7 Tiro (kg): 999 Peso (kg):
sabbia media	Operatore: EMILIANO D Stato del mare: CALMO Commenti:
a media	NASO:

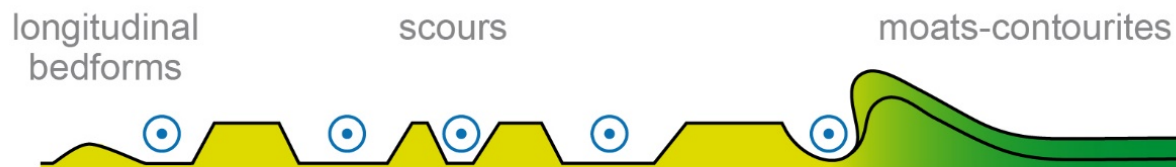




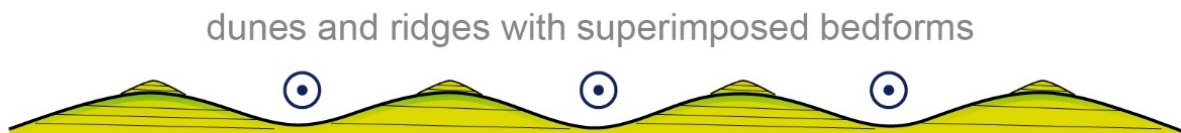
a) narrow & rectilinear shelf downstream inflection point



b) widening shelf downstream inflection point



c) curved shelf downstream headland or cape

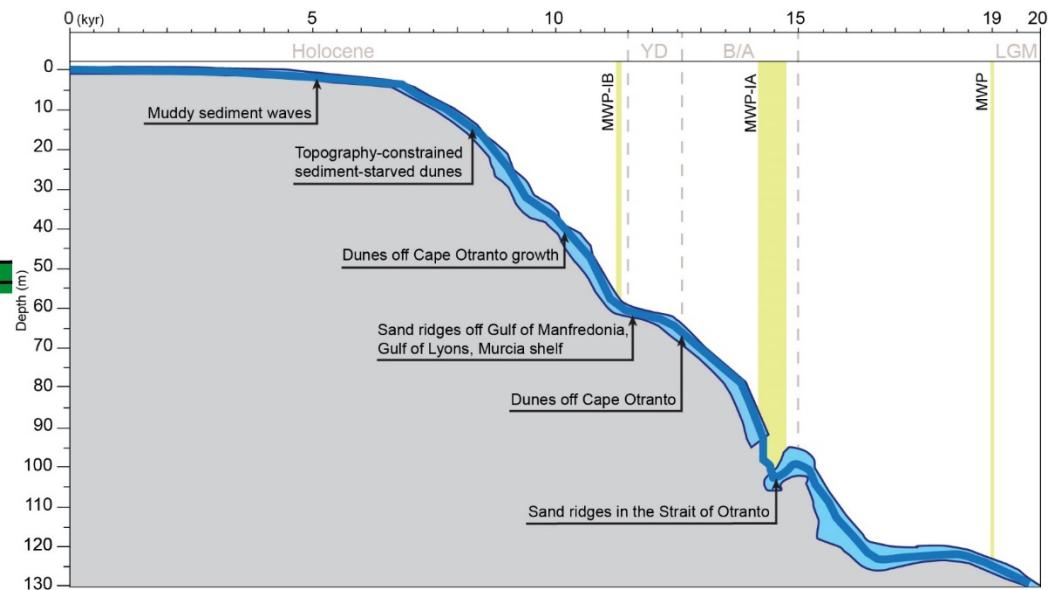


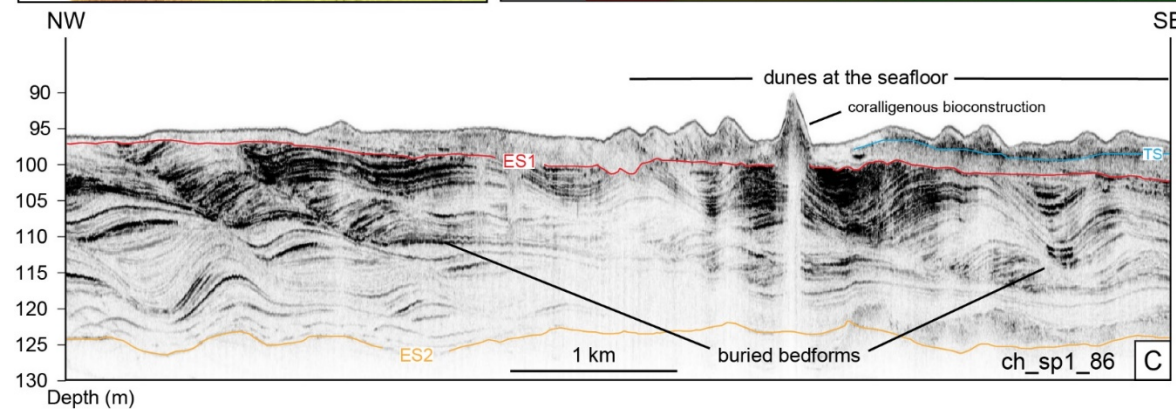
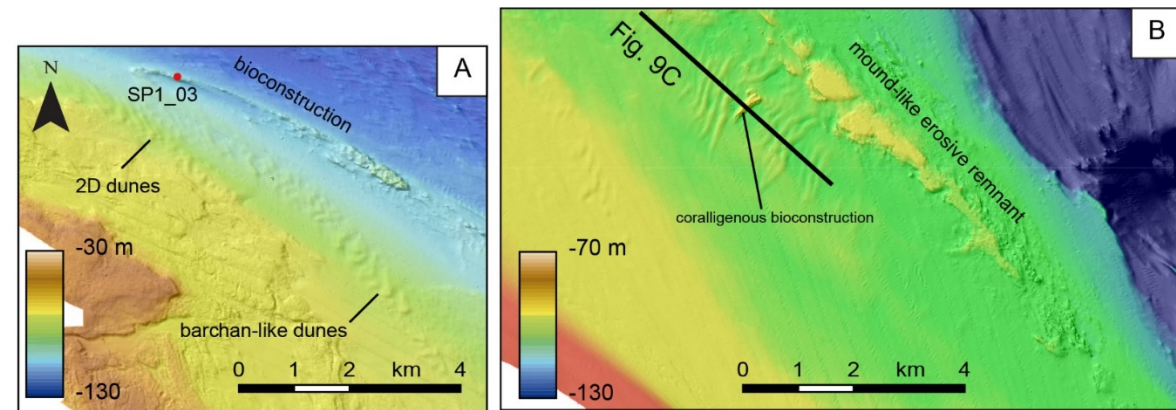
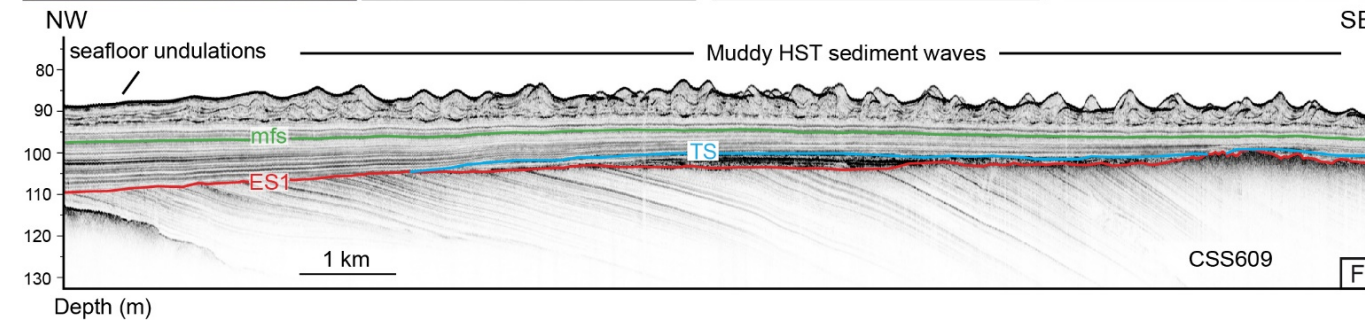
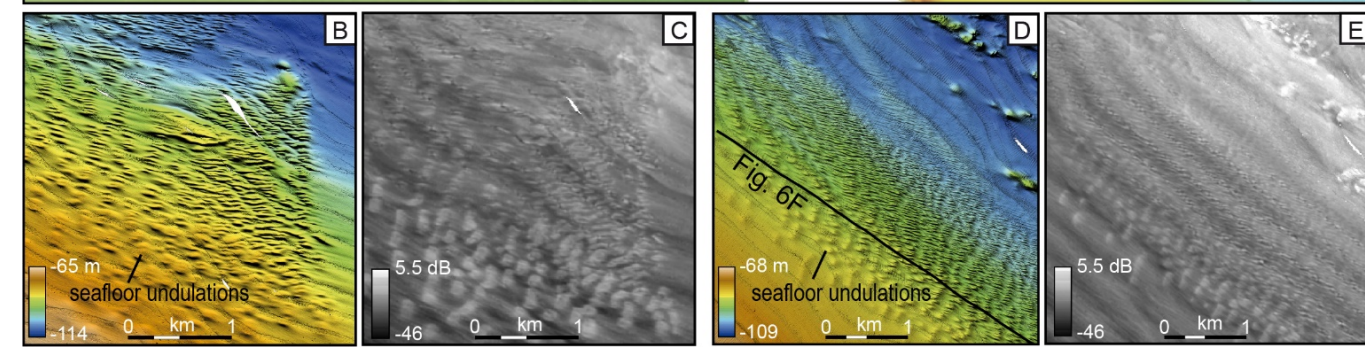
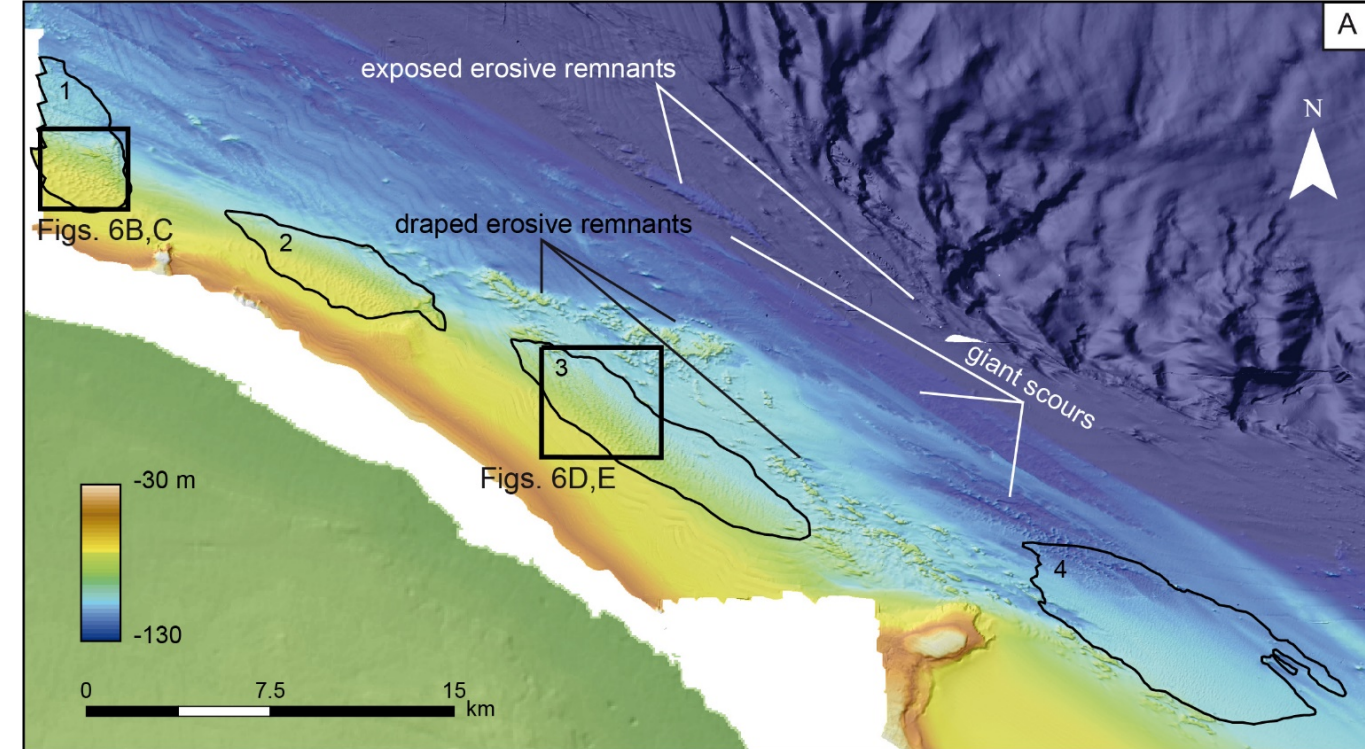
← changes in shelf edge curvature

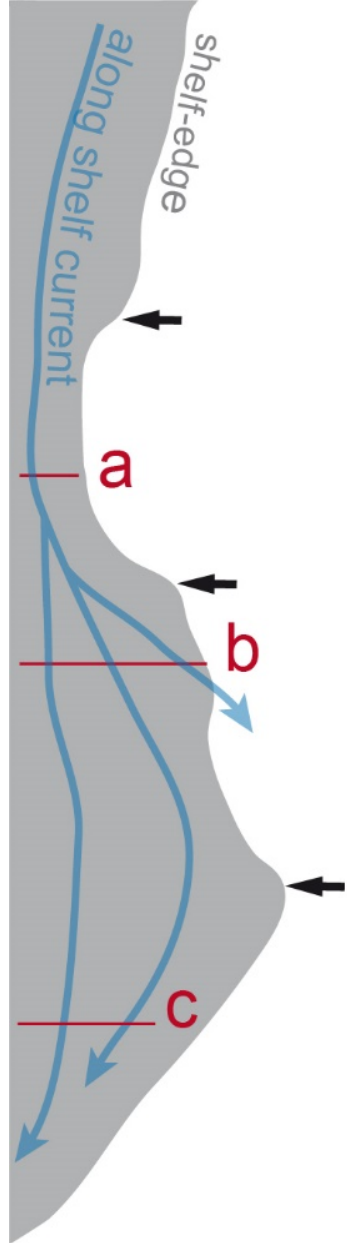
● WACC

● NAdDW

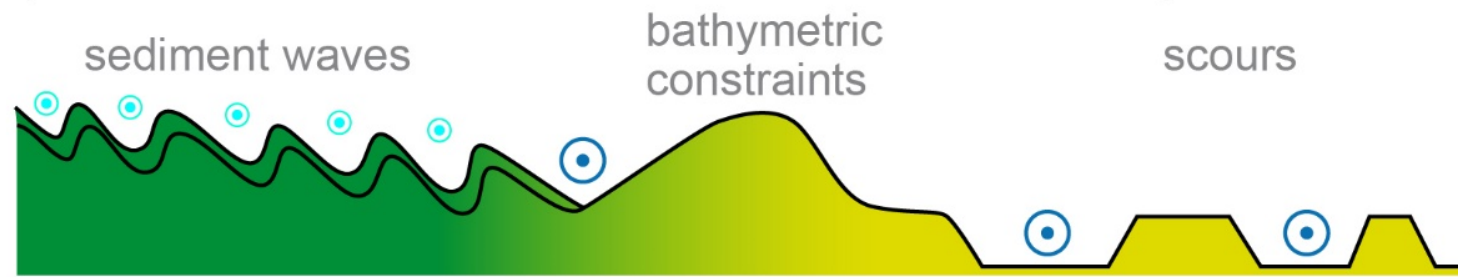
● NAdDW reinforced by waves



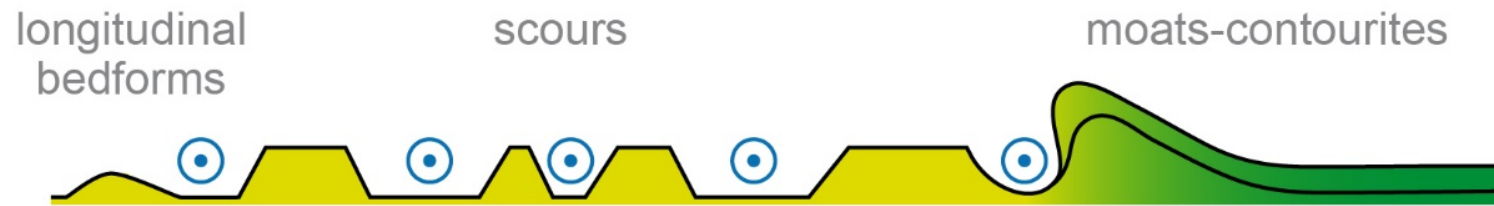




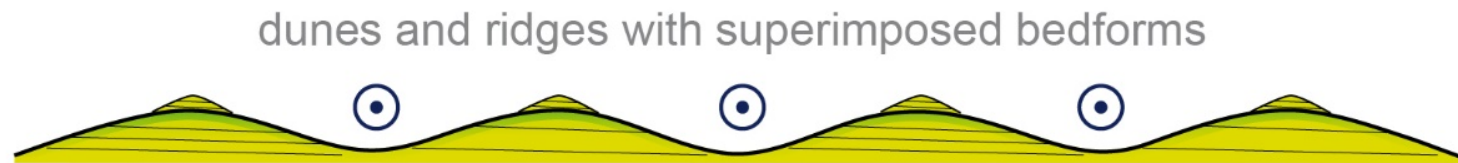
a) narrow & rectilinear shelf downstream inflection point



b) widening shelf downstream inflection point



c) curved shelf downstream headland or cape



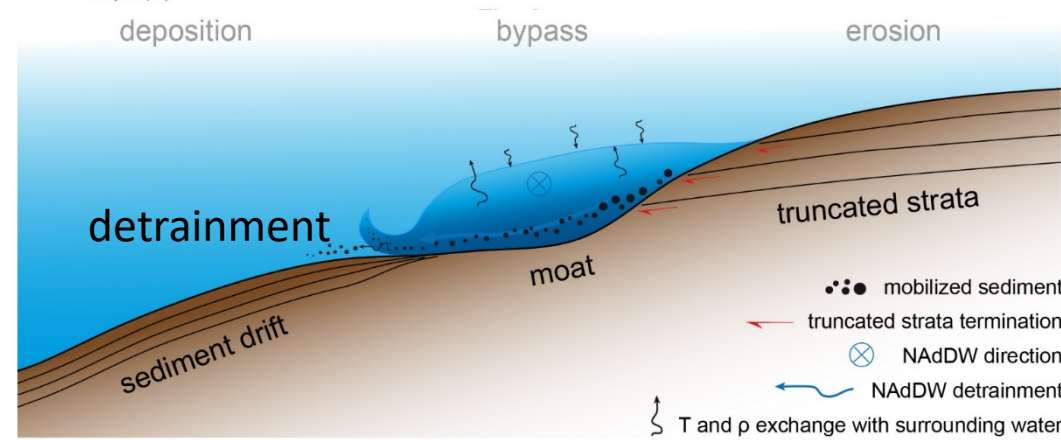
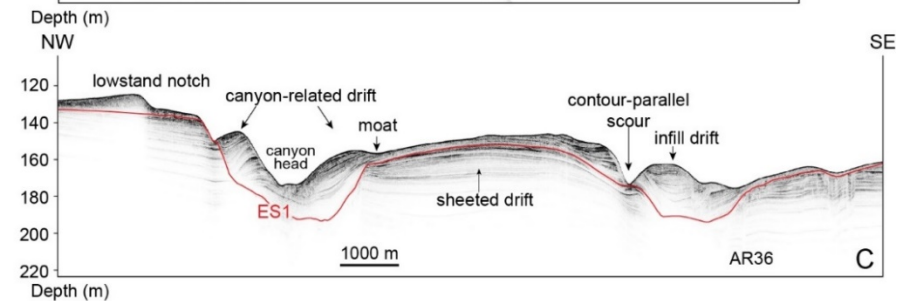
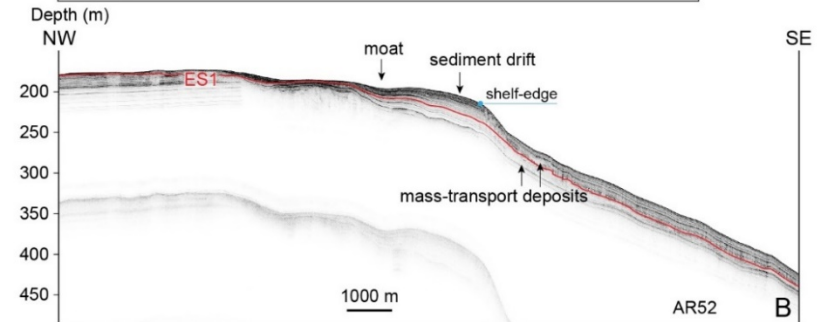
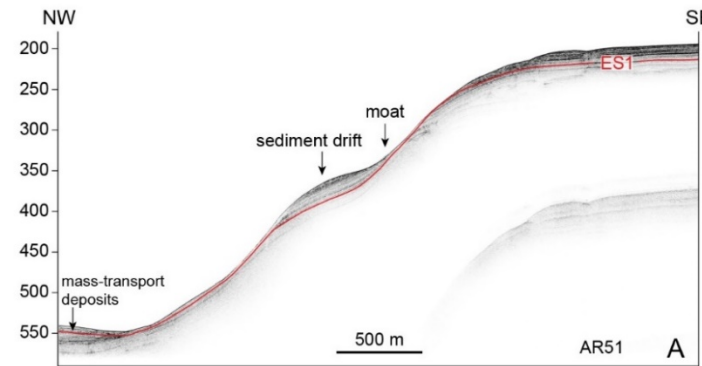
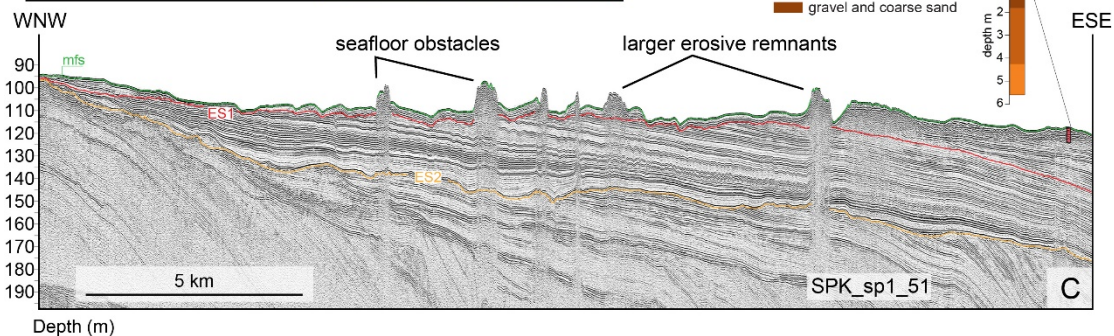
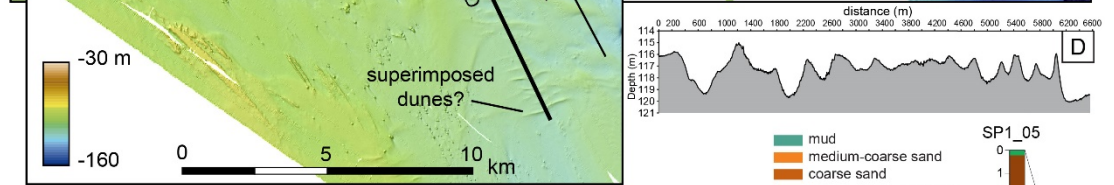
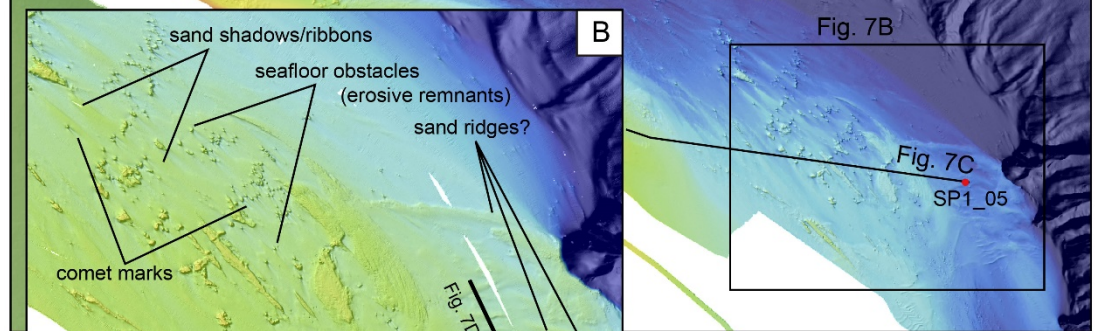
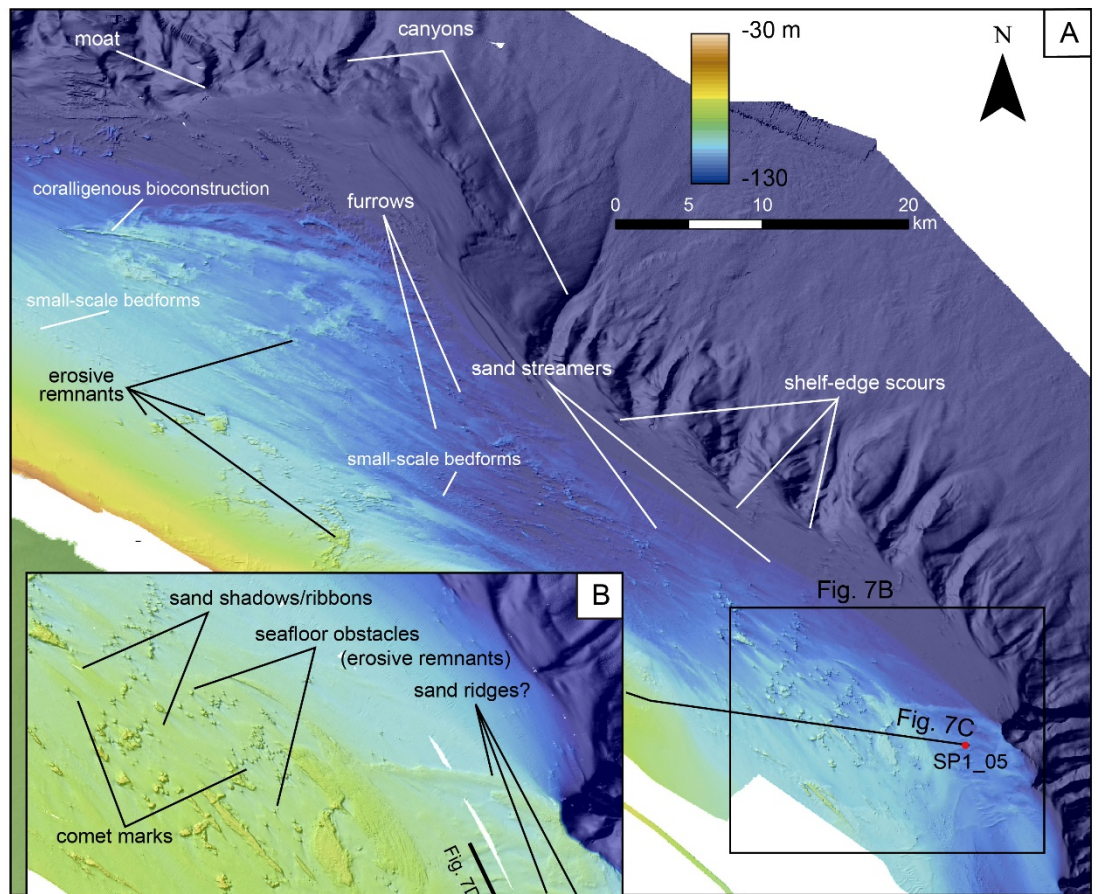
← changes in shelf edge curvature

⊙ WACC

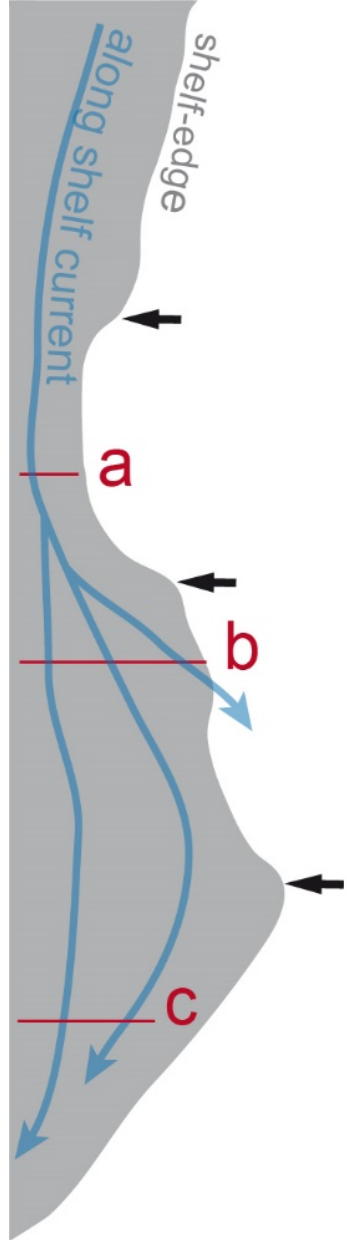
⊙ NAdDW

⊙ NAdDW reinforced by waves

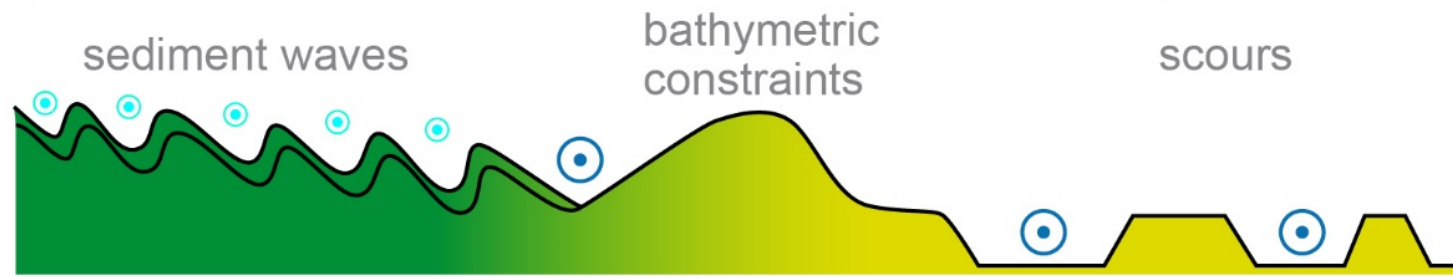




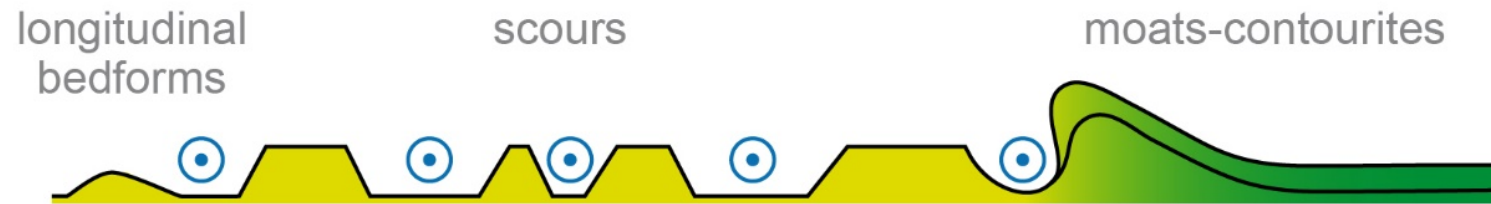




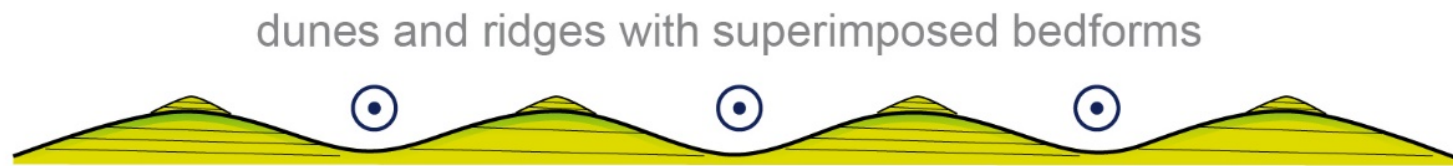
**a) narrow & rectilinear shelf downstream inflection point**



**b) widening shelf downstream inflection point**



**c) curved shelf downstream headland or cape**



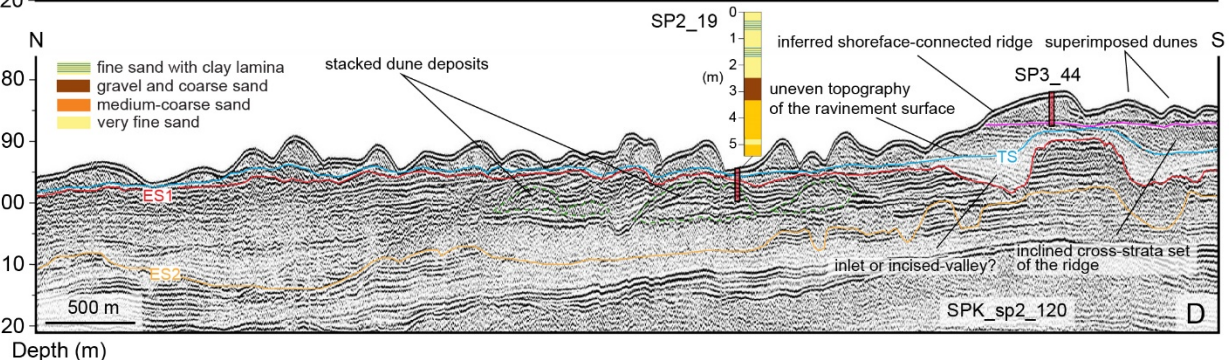
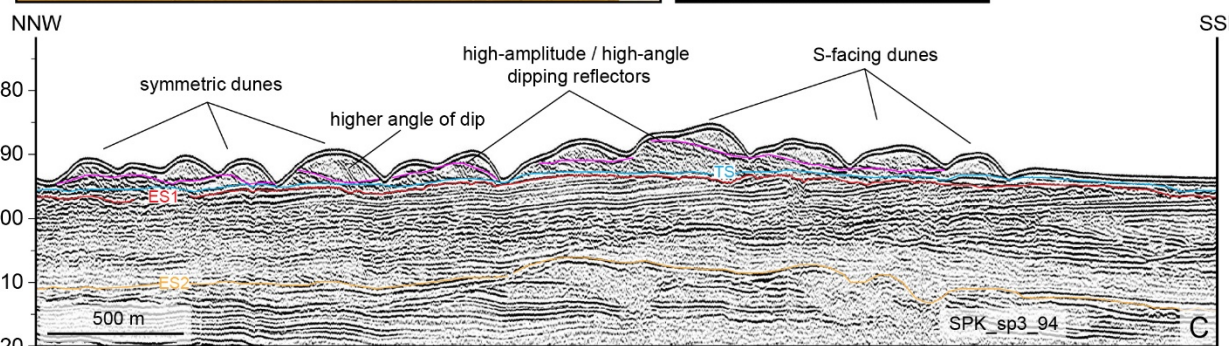
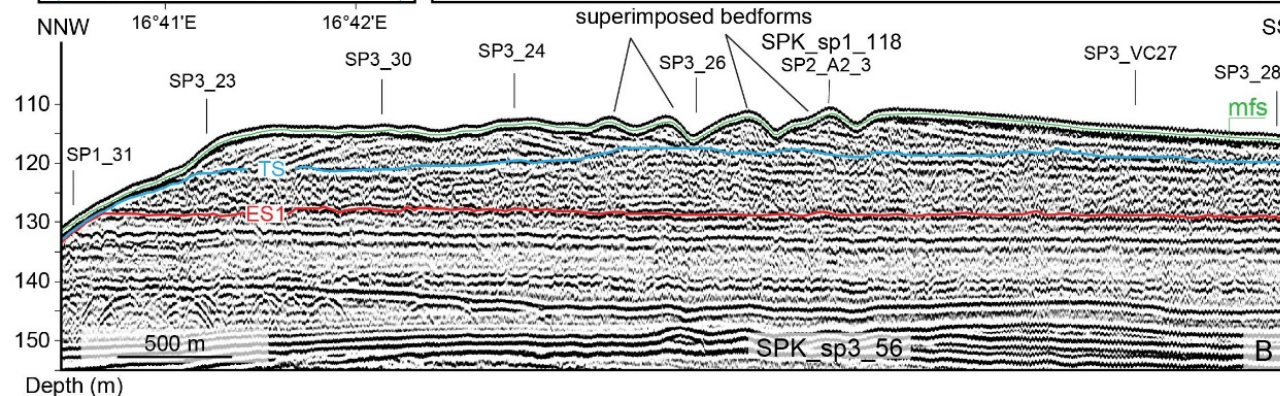
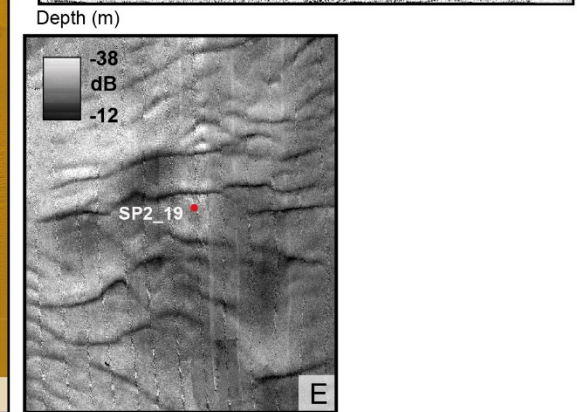
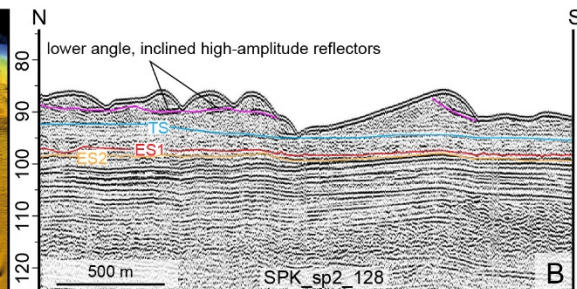
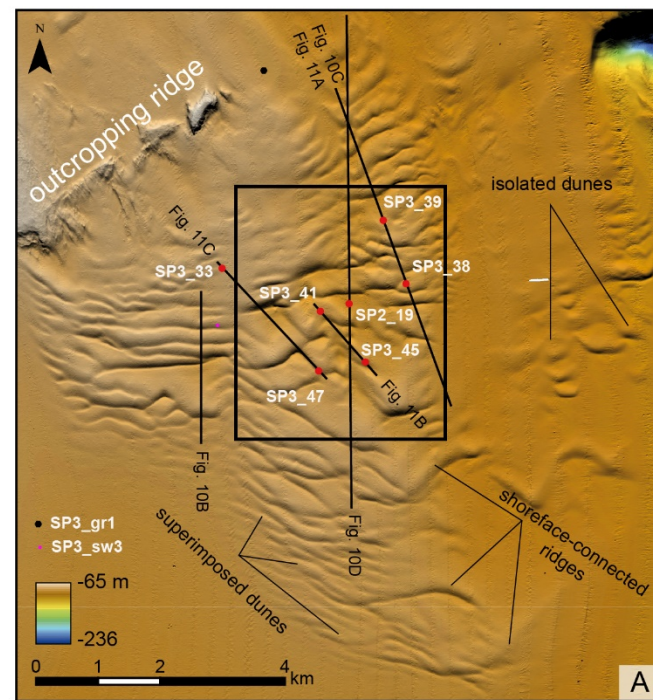
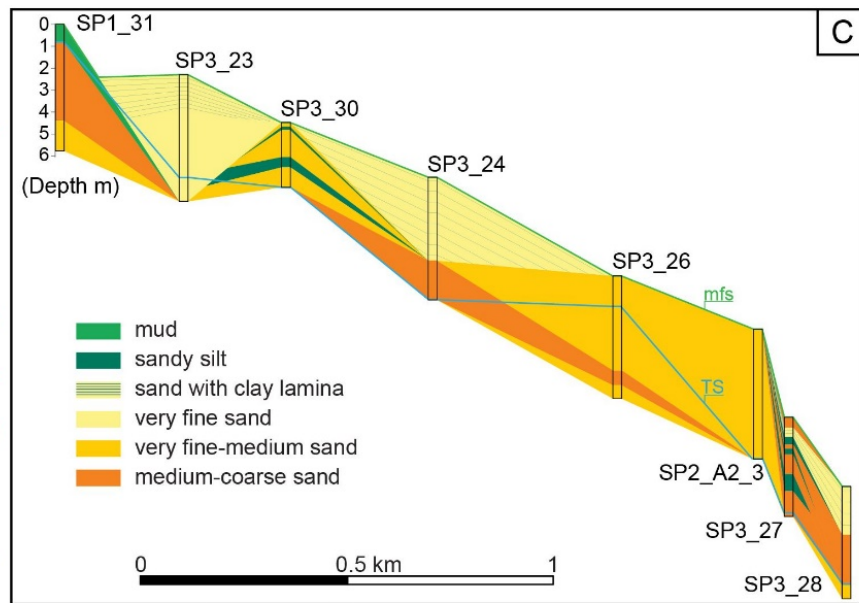
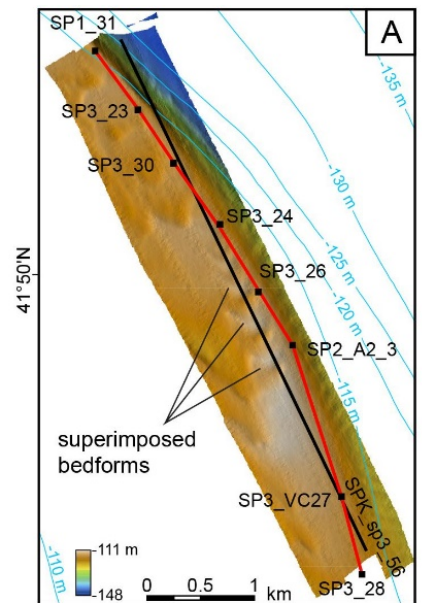
← changes in shelf edge curvature

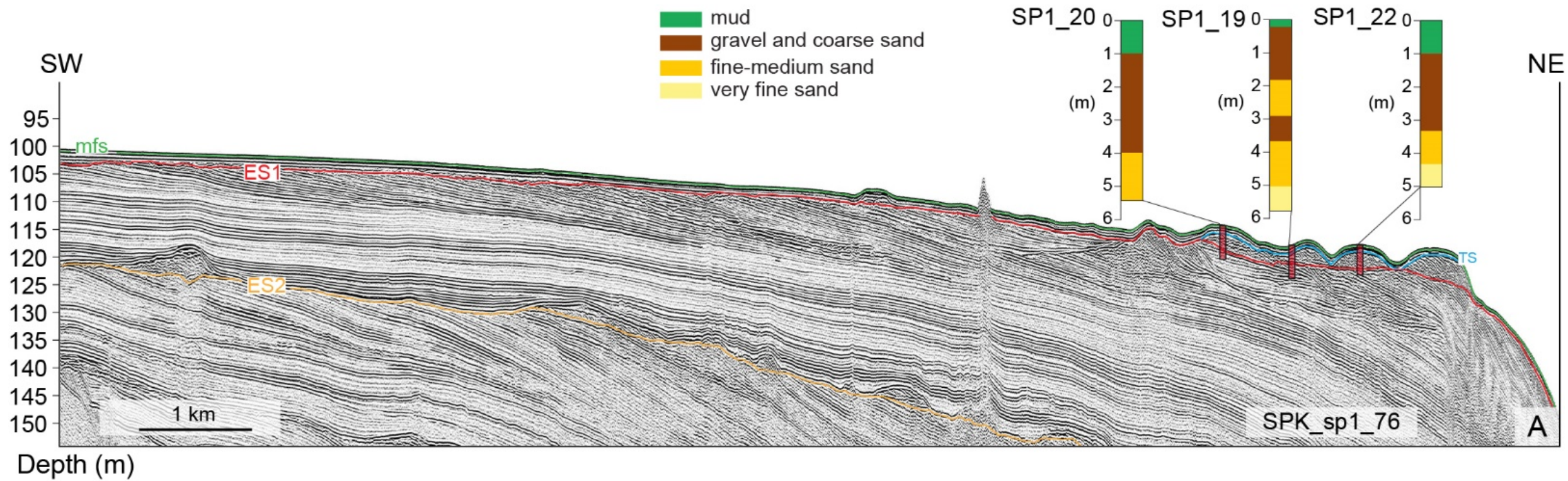
⊙ WACC

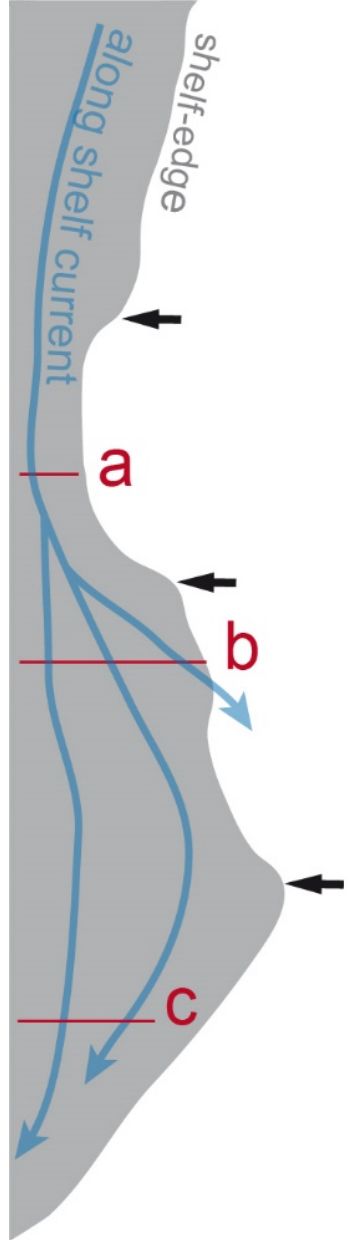
⊙ NAdDW

⊙ NAdDW reinforced by waves

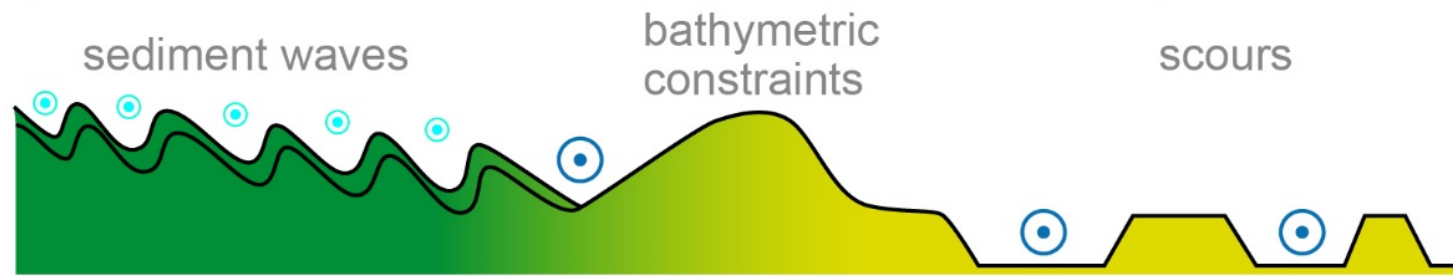




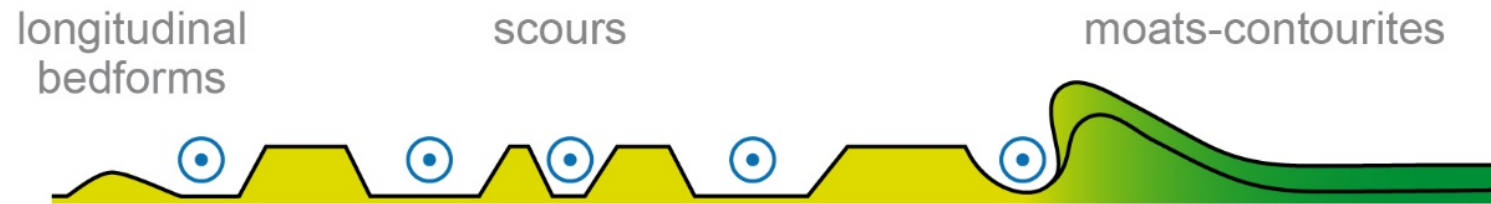




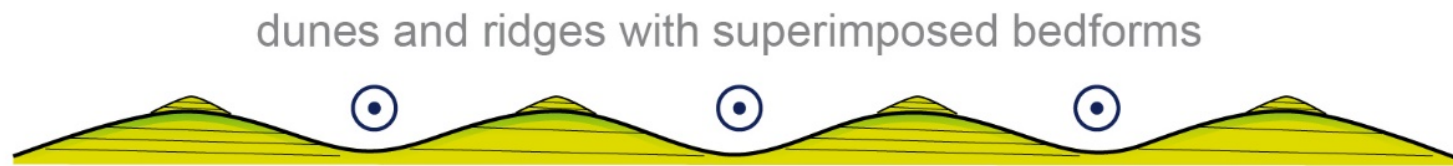
a) narrow & rectilinear shelf downstream inflection point



b) widening shelf downstream inflection point



c) curved shelf downstream headland or cape



← changes in shelf edge curvature

⊙ WACC

⊙ NAdDW

⊙ NAdDW reinforced by waves

