

Science, Service, Stewardship



Revised bathymetry of the eastern Aleutian Islands, Alaska

Mark Zimmermann – Fisheries Biologist

Megan Prescott – GIS Technician

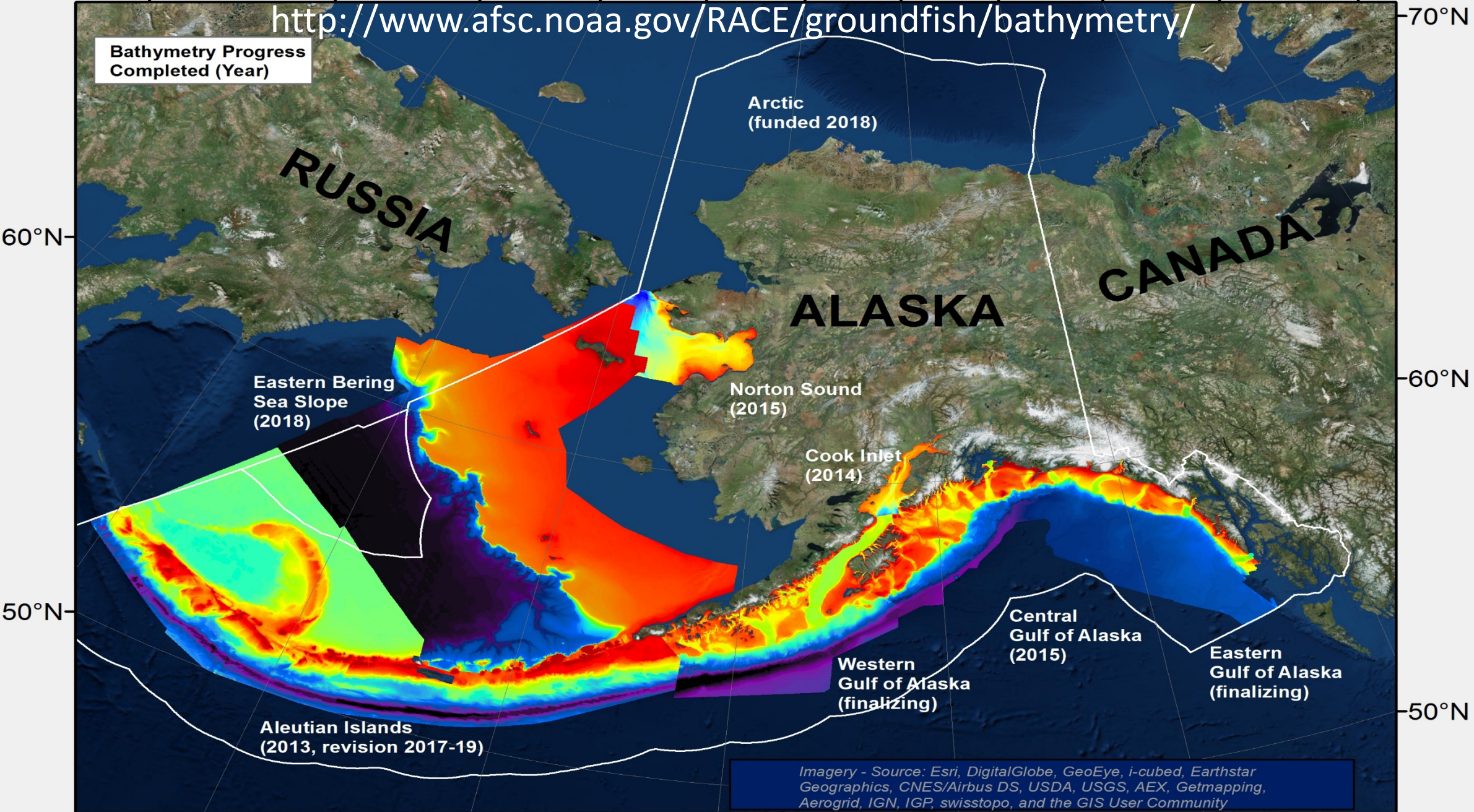
NOAA

**NATIONAL
MARINE
FISHERIES
SERVICE**

150°E 160°E 170°E 180° 170°W 160°W 150°W 140°W 130°W 120°W 110°W

<http://www.afsc.noaa.gov/RACE/groundfish/bathymetry/>

Bathymetry Progress Completed (Year)



Eastern Bering Sea Slope (2018)

Arctic (funded 2018)

Norton Sound (2015)

Cook Inlet (2014)

Aleutian Islands (2013, revision 2017-19)

Western Gulf of Alaska (finalizing)

Central Gulf of Alaska (2015)

Eastern Gulf of Alaska (finalizing)

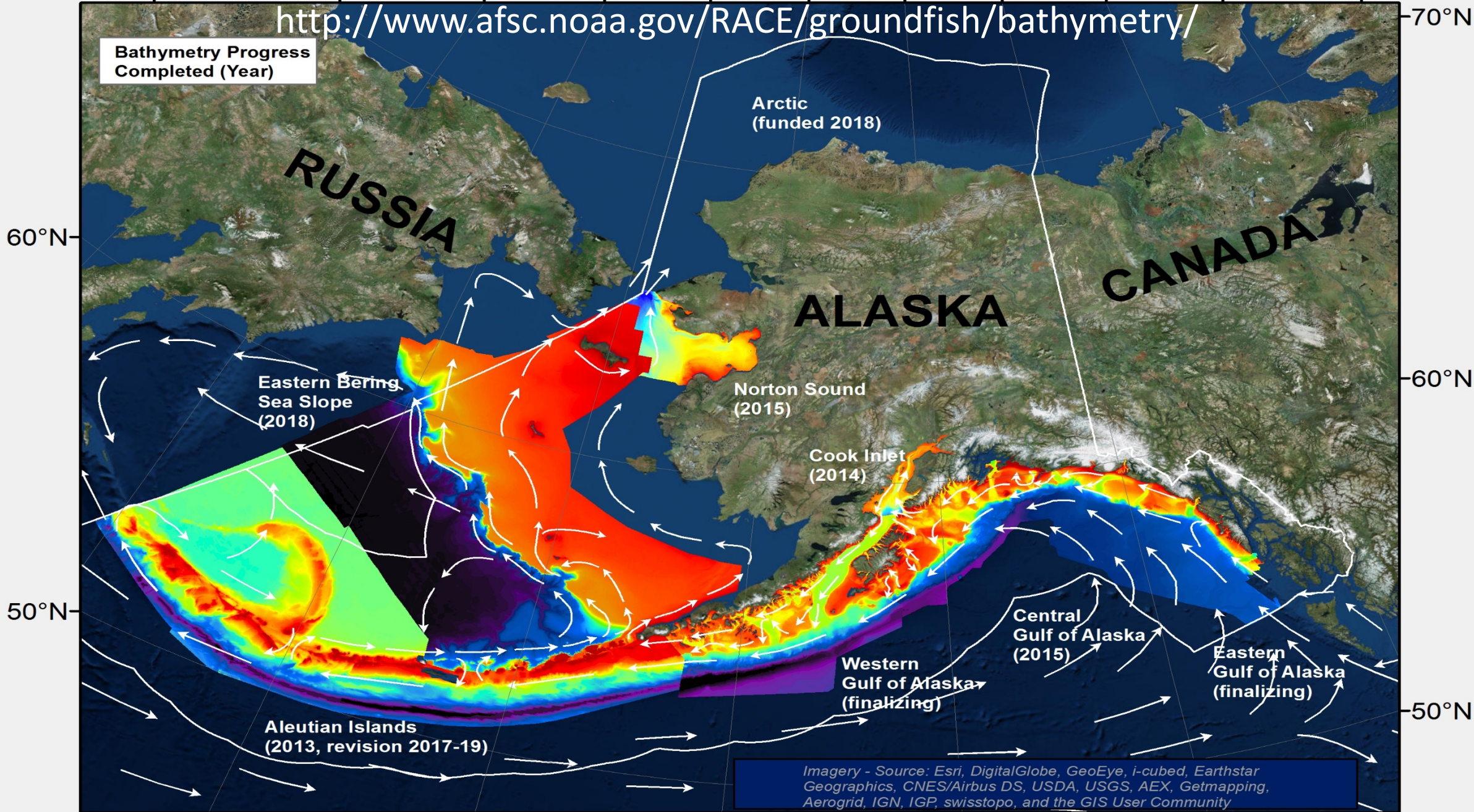
Imagery - Source: Esri, DigitalGlobe, GeoEye, i-cubed, Earthstar Geographics, CNES/Airbus DS, USDA, USGS, AEX, Getmapping, Aerogrid, IGN, IGP, swisstopo, and the GIS User Community

180° 170°W 160°W 150°W 140°W

150°E 160°E 170°E 180° 170°W 160°W 150°W 140°W 130°W 120°W 110°W

<http://www.afsc.noaa.gov/RACE/groundfish/bathymetry/>

Bathymetry Progress Completed (Year)



Imagery - Source: Esri, DigitalGlobe, GeoEye, i-cubed, Earthstar Geographics, CNES/Airbus DS, USDA, USGS, AEX, Getmapping, Aerogrid, IGN, IGP, swisstopo, and the GIS User Community

Estimating size and depth of Aleutian Passes

THE ALASKAN STREAM

by
Felix Favorite

Biological Laboratory, Bureau of Commercial Fisheries
Seattle, Washington, June 1965

TABLE 1. Cross-sectional areas and sill depths of major passes or straits through the Aleutian Islands.

Location	Pass or Strait ¹	Area (m ² × 10 ⁶)	Max. sill depth (m)
163°W-165°W			
Alaska Peninsula to	1 False	0.1	35
Krenitzin Islands	2 Unimak	0.9	60
	3 Ugamak	0.2	45

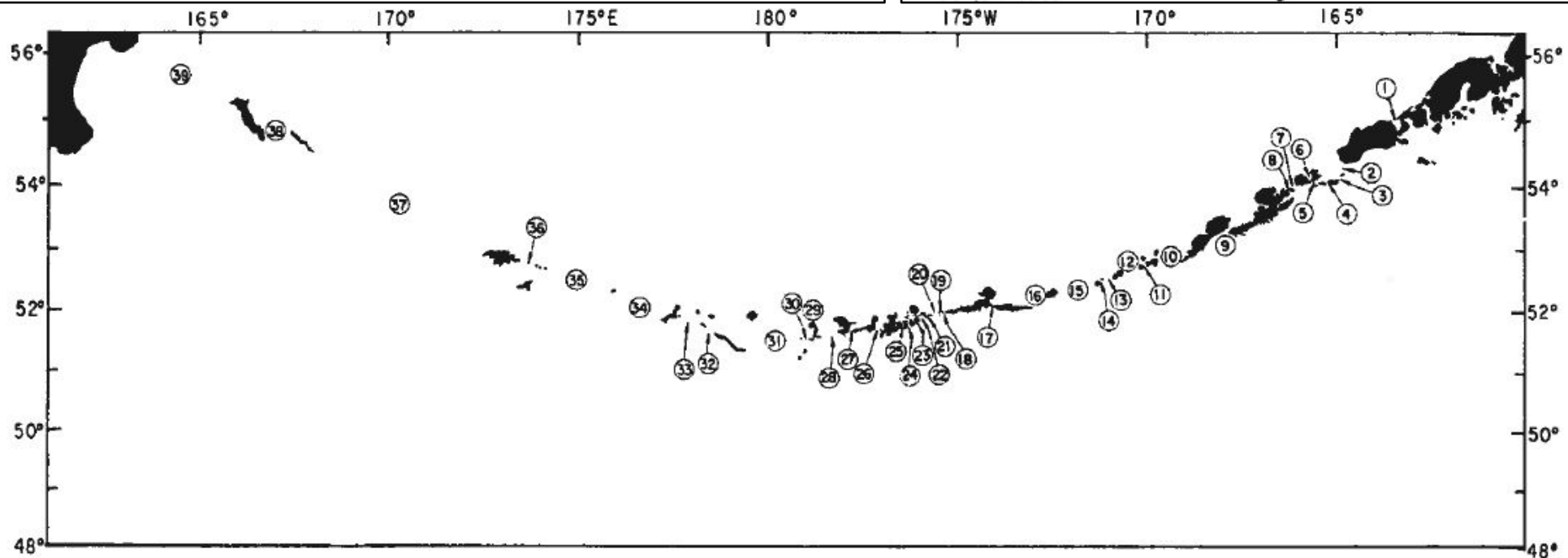
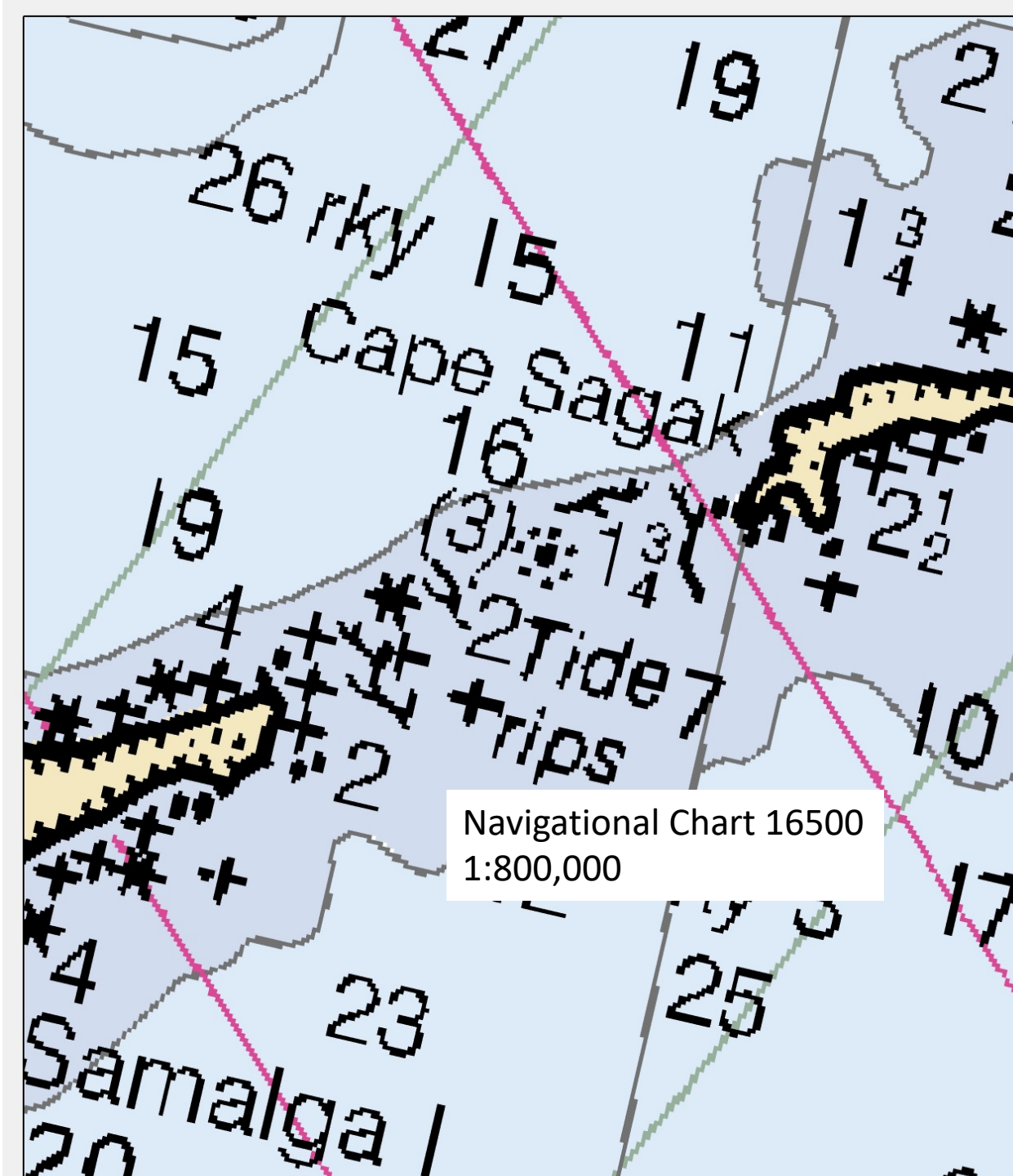
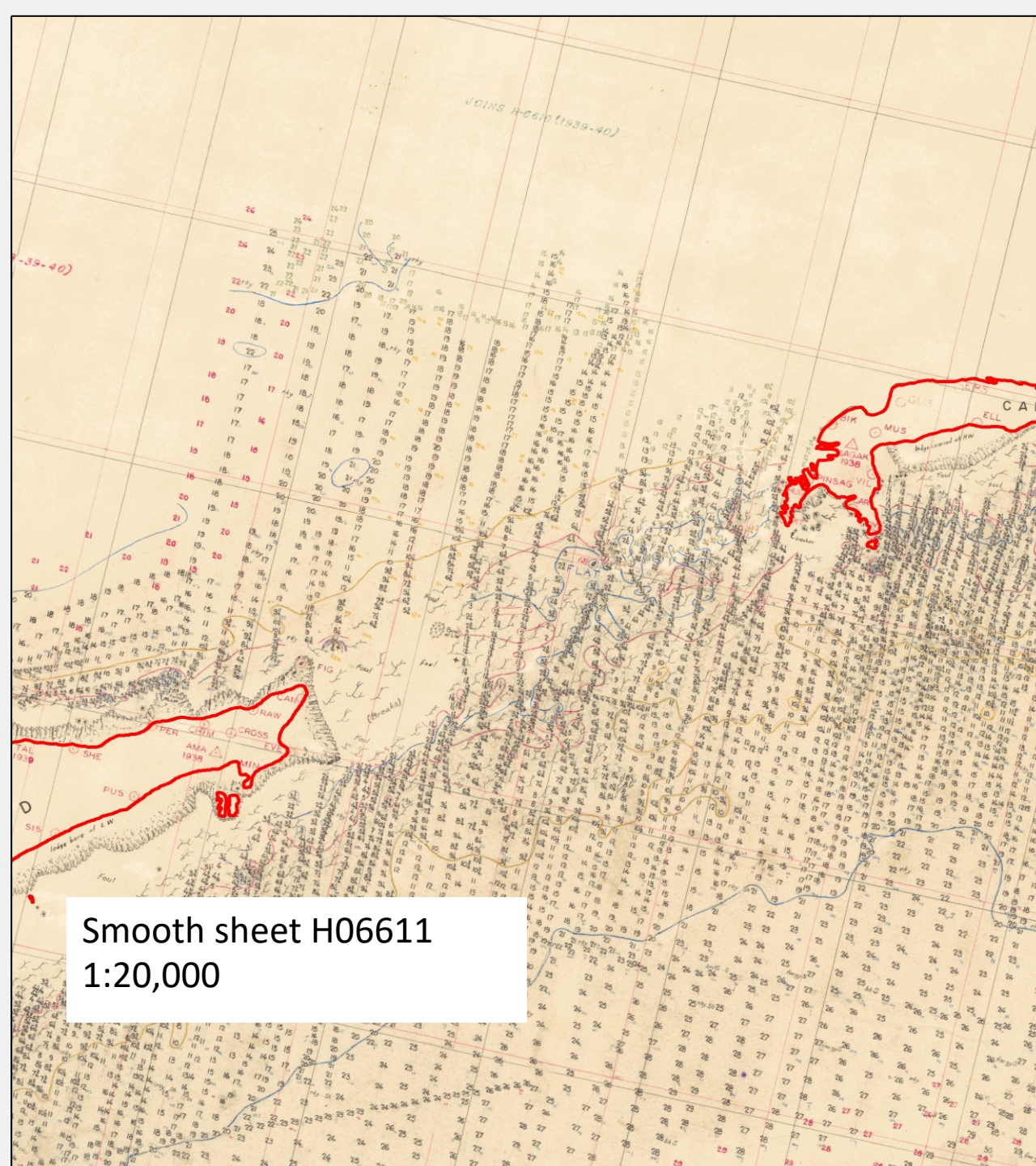


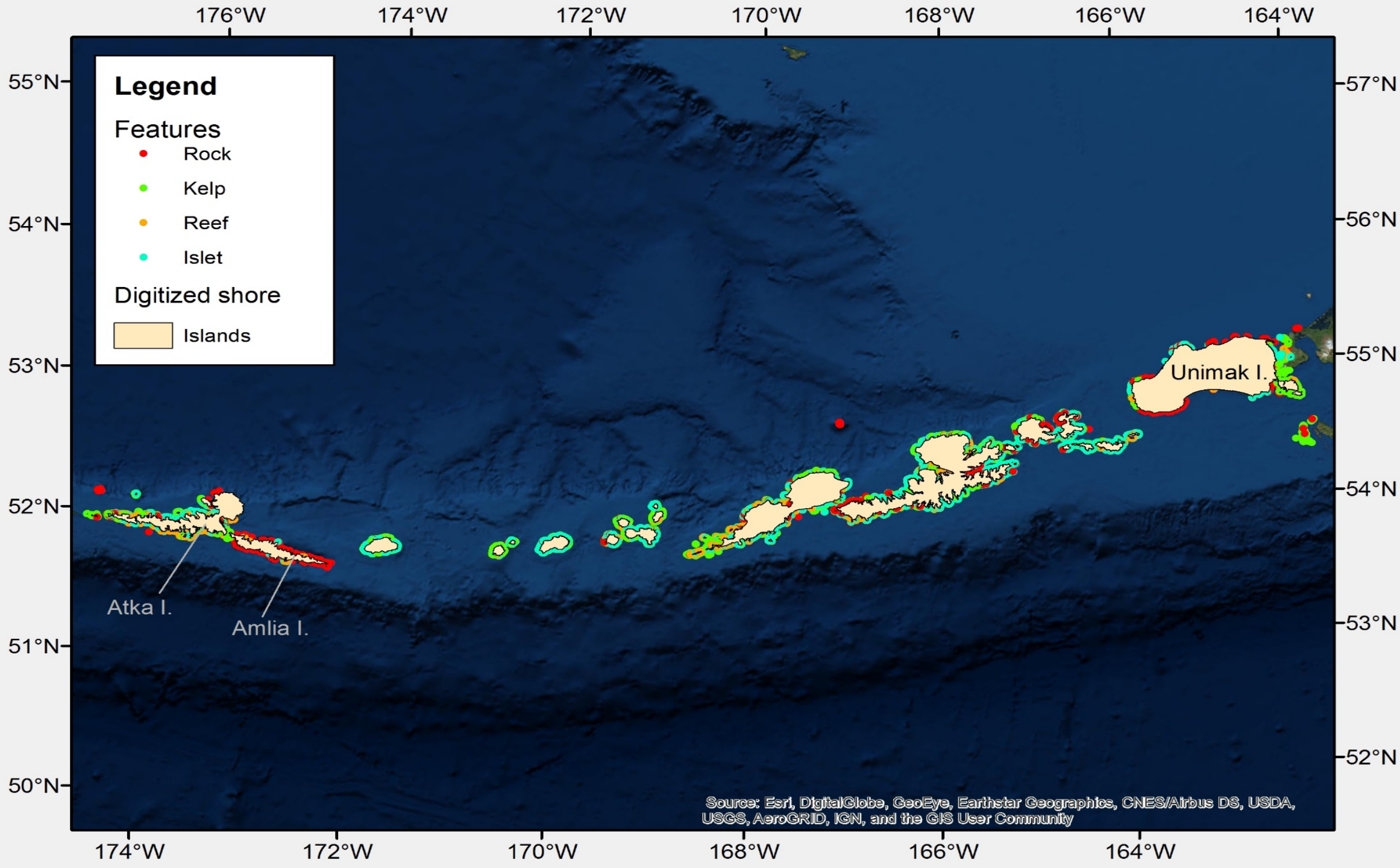
FIGURE 3. Aleutian-Komandorski island chain showing major passes (see Table 1).

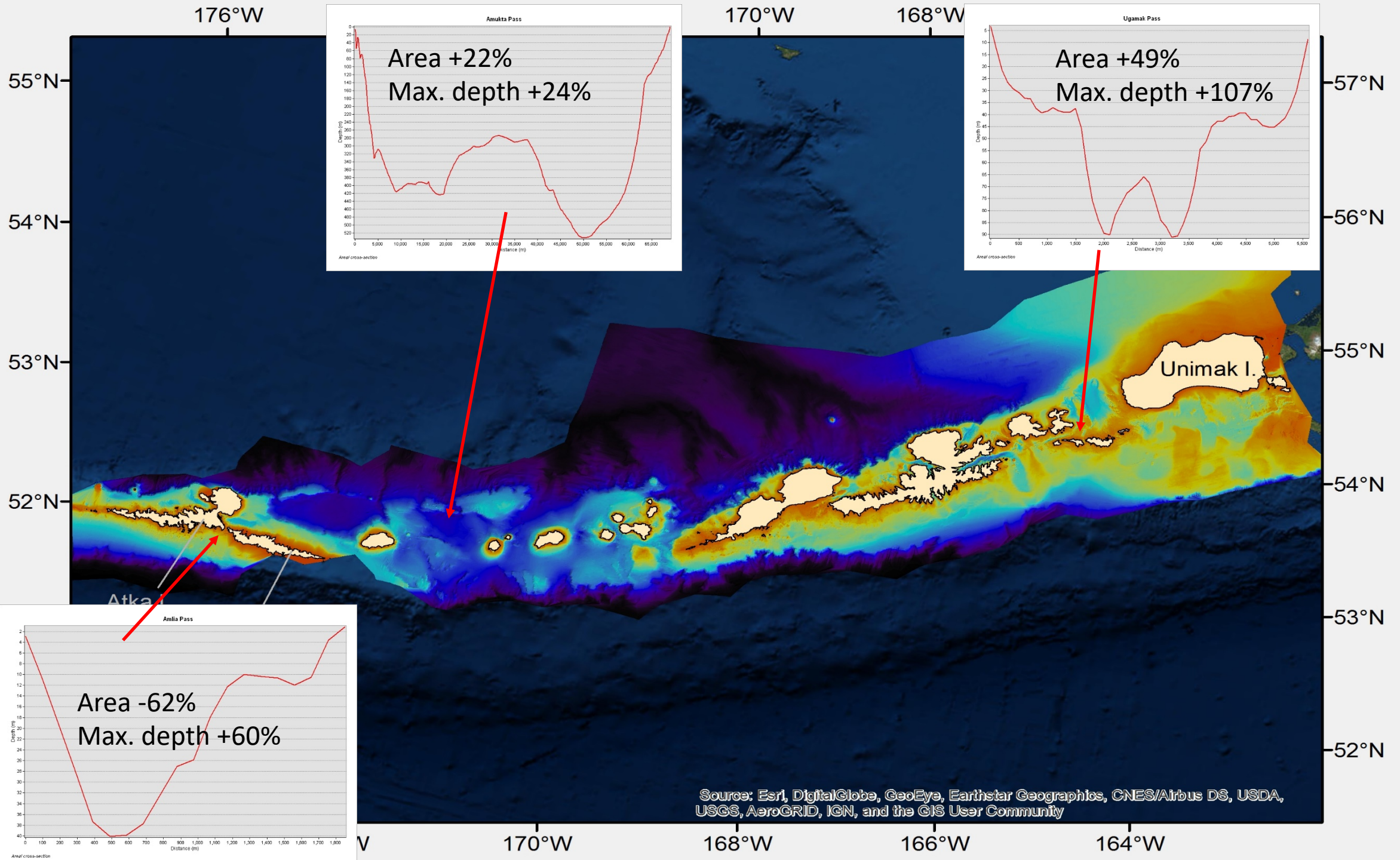


Navigational Chart 16500
1:800,000



Smooth sheet H06611
1:20,000





Source: Esri, DigitalGlobe, GeoEye, Earthstar Geographics, CNES/Airbus DS, USDA, USGS, AeroGRID, IGN, and the GIS User Community

Aleutian Islands bathymetry

- smooth sheet details important
- continuous shore-to-shore coverage critical
- completing revision in 2019

