

Portsmouth (UK) overview
5 x 5 m. grid
depth appr. 10 m.



LOCATION / CLIENT



Mr Paul Simmonds
Naval Base Headquarters,
Building 11100,
HMS Nelson,
HM Naval Base (PP72),
Portsmouth, PO1 3LS
Tel: 02392 723676



Reason project:

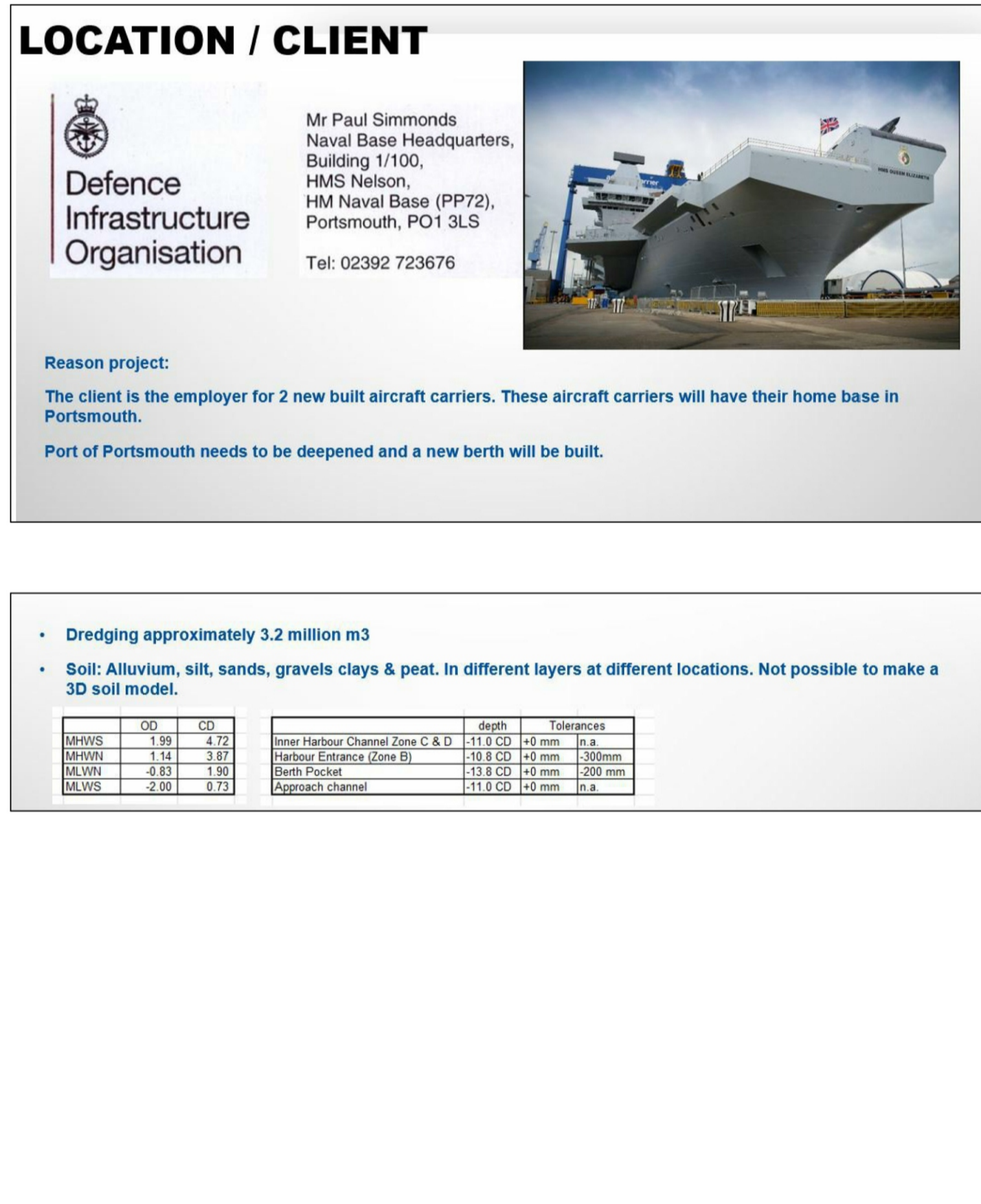
The client is the employer for 2 new built aircraft carriers. These aircraft carriers will have their home base in Portsmouth.

Port of Portsmouth needs to be deepened and a new berth will be built.

Dredging approximately 3.2 million m3

Soil: Alluvium, silt, sands, gravels clays & peat. In different layers at different locations. Not possible to make a 3D soil model.

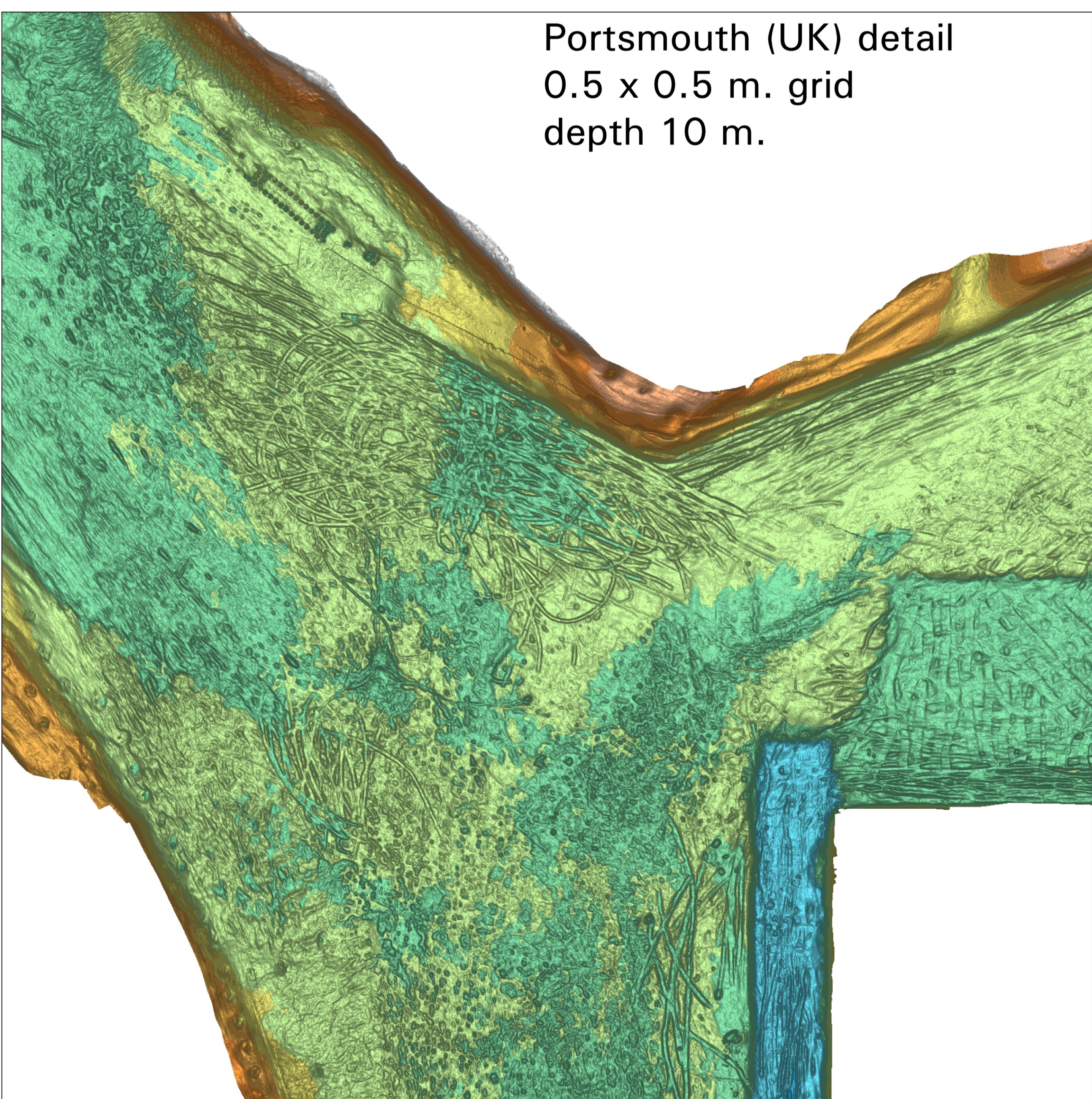
OC	CD	depth	thickness
1.99	2.72	11.0 CD	0.73 m
1.14	1.64	10.0 CD	0.90 m
0.83	1.93	9.0 CD	0.88 m
2.00	2.91	8.0 CD	0.91 m



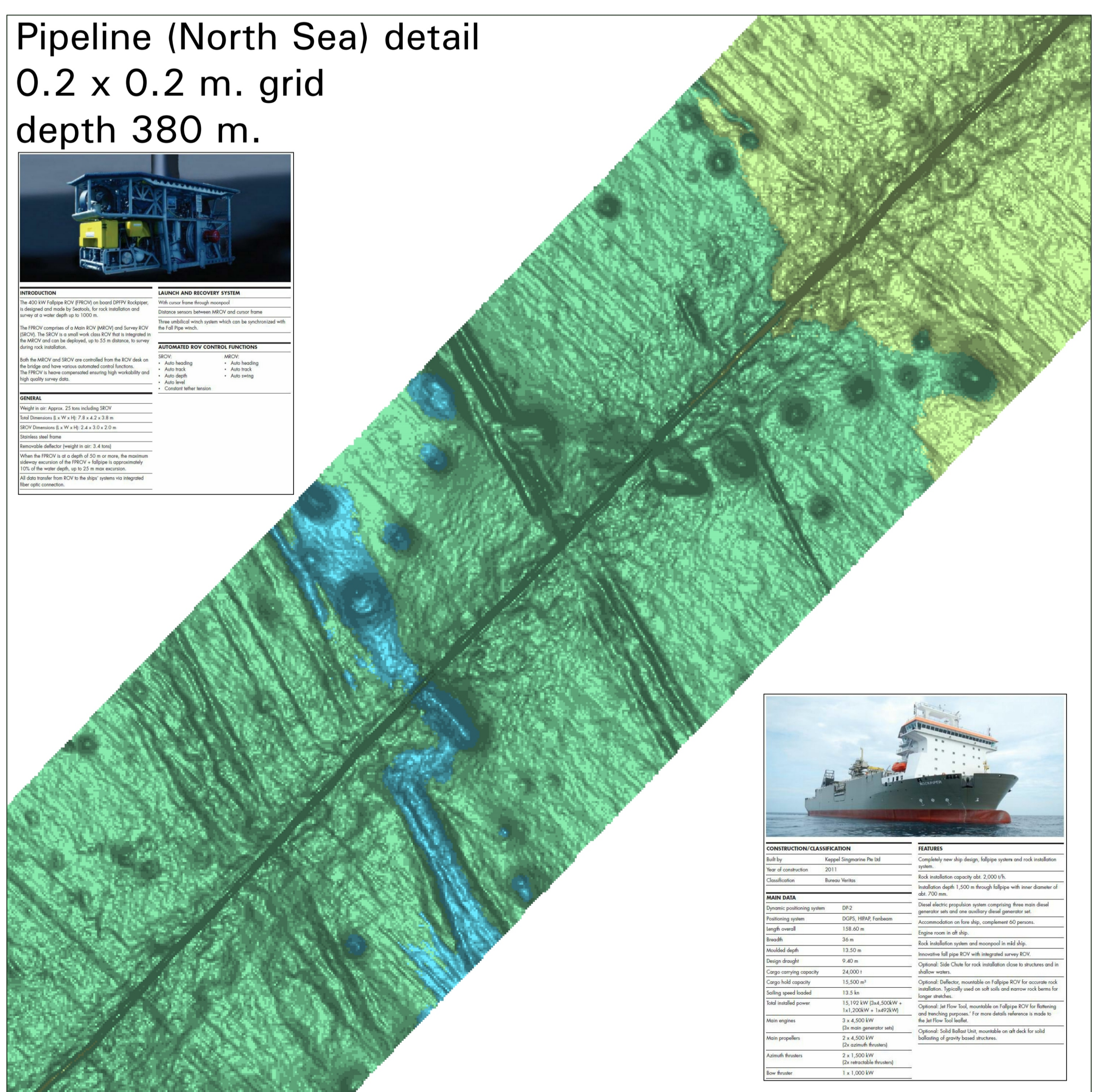
CONSTRUCTION/CLASSIFICATION		MAIN DATA	
Build for	Ships & V	Gross tonnage	4,320
Year of construction	2014	Length overall	92.10 m
Classification	1 x HULL & MACH & Hopper-dredger; Unconstrained Navigation; Dredging within 15 miles from shore or within 20 miles from port or dredging over 15 miles from shore with a significant wave height restriction to 2.5 m. @ AURIGAS	I.p.p.	84.87 m
		Beam	19.00 m
		Max. draught to load line	6.75 m
		Max. draught to DWT 5392	5.75 m
		Max. draught to DWT 6750	6.92 m
		Hopper capacity	4,500 m³
		Section pipe diameter	900 mm
		Min. dredging depth	30 m
		Safety speed loaded	11 kn
		Max. installed power	9,472 kW
		Sand pump output	1,823 m³/h
		Jet pump output	27,646 m³/h
		Pump suction output	3,650 m³/h
		Propulsion power setting	21,491 kW
		Bow thruster	500 kW



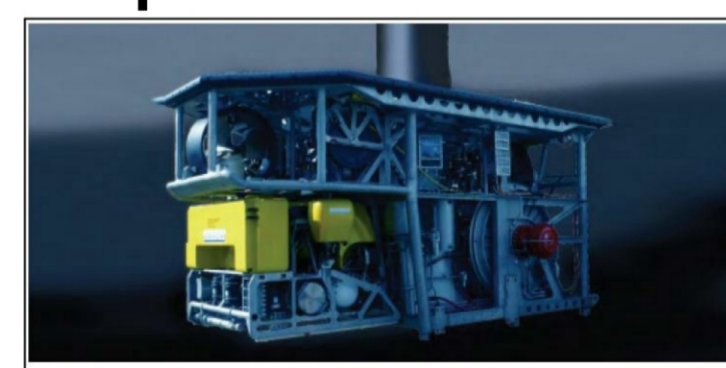
CONSTRUCTION/CLASSIFICATION		MAIN DATA	
Build for	Ships & V	Gross tonnage	4,320
Year of construction	2013	Length overall	92.10 m
Classification	1 x HULL & MACH & Hopper-dredger; Unconstrained Navigation; Dredging within 15 miles from shore or within 20 miles from port or dredging over 15 miles from shore with a significant wave height restriction to 2.5 m. @ AURIGAS	I.p.p.	84.87 m
		Beam	19.00 m
		Max. draught to load line	6.75 m
		Max. draught to DWT 5392	5.75 m
		Max. draught to DWT 6750	6.92 m
		Hopper capacity	4,500 m³
		Section pipe diameter	900 mm
		Min. dredging depth	30 m
		Safety speed loaded	11 kn
		Max. installed power	9,472 kW
		Sand pump output	1,823 m³/h
		Jet pump output	27,646 m³/h
		Pump suction output	3,650 m³/h
		Propulsion power setting	21,491 kW
		Bow thruster	500 kW



Portsmouth (UK) detail
0.5 x 0.5 m. grid
depth 10 m.



Pipeline (North Sea) detail
0.2 x 0.2 m. grid
depth 380 m.



CONSTRUCTION/CLASSIFICATION		MAIN DATA	
Build for	Ships & V	Gross tonnage	4,320
Year of construction	2013	Length overall	92.10 m
Classification	1 x HULL & MACH & Hopper-dredger; Unconstrained Navigation; Dredging within 15 miles from shore or within 20 miles from port or dredging over 15 miles from shore with a significant wave height restriction to 2.5 m. @ AURIGAS	I.p.p.	84.87 m
		Beam	19.00 m
		Max. draught to load line	6.75 m
		Max. draught to DWT 5392	5.75 m
		Max. draught to DWT 6750	6.92 m
		Hopper capacity	4,500 m³
		Section pipe diameter	900 mm
		Min. dredging depth	30 m
		Safety speed loaded	11 kn
		Max. installed power	9,472 kW
		Sand pump output	1,823 m³/h
		Jet pump output	27,646 m³/h
		Pump suction output	3,650 m³/h
		Propulsion power setting	21,491 kW
		Bow thruster	500 kW



CONSTRUCTION/CLASSIFICATION		MAIN DATA	
Build for	Ships & V	Gross tonnage	4,320
Year of construction	2013	Length overall	92.10 m
Classification	1 x HULL & MACH & Hopper-dredger; Unconstrained Navigation; Dredging within 15 miles from shore or within 20 miles from port or dredging over 15 miles from shore with a significant wave height restriction to 2.5 m. @ AURIGAS	I.p.p.	84.87 m
		Beam	19.00 m
		Max. draught to load line	6.75 m
		Max. draught to DWT 5392	5.75 m
		Max. draught to DWT 6750	6.92 m
		Hopper capacity	4,500 m³
		Section pipe diameter	900 mm
		Min. dredging depth	30 m
		Safety speed loaded	11 kn
		Max. installed power	9,472 kW
		Sand pump output	1,823 m³/h
		Jet pump output	27,646 m³/h
		Pump suction output	3,650 m³/h
		Propulsion power setting	21,491 kW
		Bow thruster	500 kW