



⚓ *EMODNET Preparatory Actions*
⚓ *Hydrographic and Seabed Mapping*



⚓ *By*

⚓ *Thierry Schmitt – SHOM*

⚓ *And the EMODNET Hydrography Team*

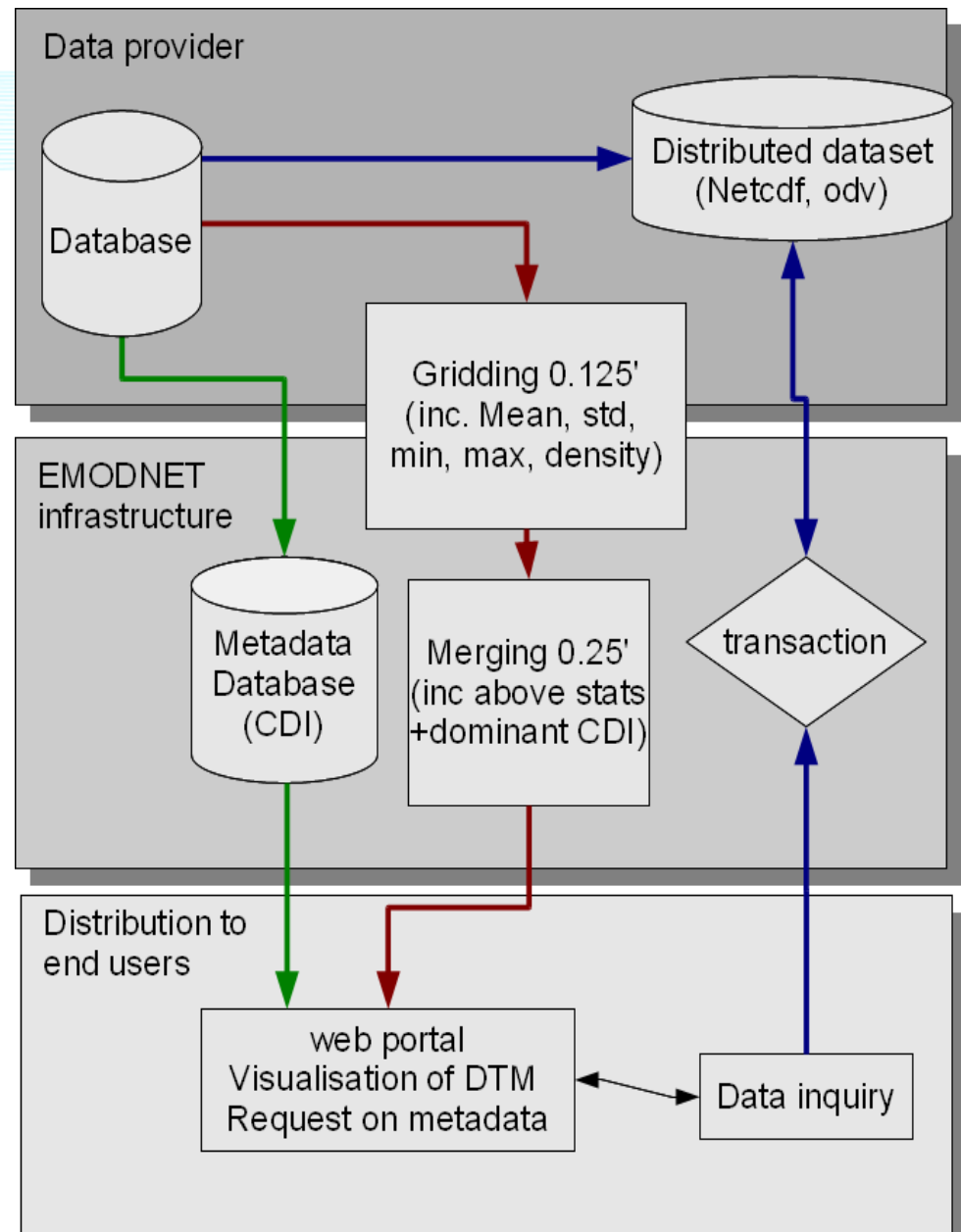
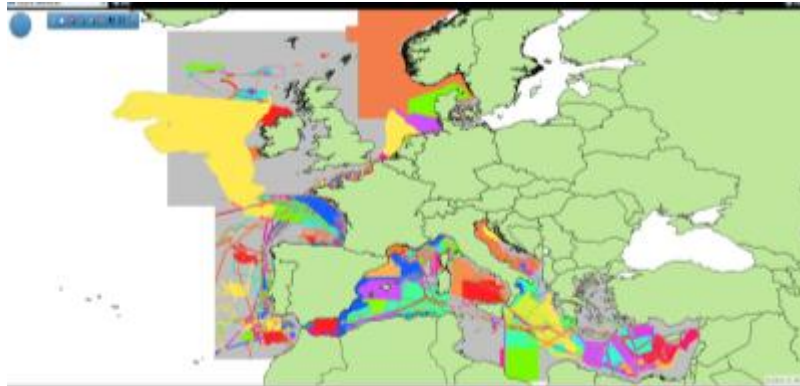
Pilot project

Distributed infrastructure

Encompass interests/constraints of
HOs, data centres, industry

Facilitate the distribution of the data
on the provider side

Maximise the use of the data





Hydrographic and Seabed Mapping – partnership

↓ **Members of the SeaDataNet consortium together with other organisations from marine science, the hydrographic survey community, and industry:**

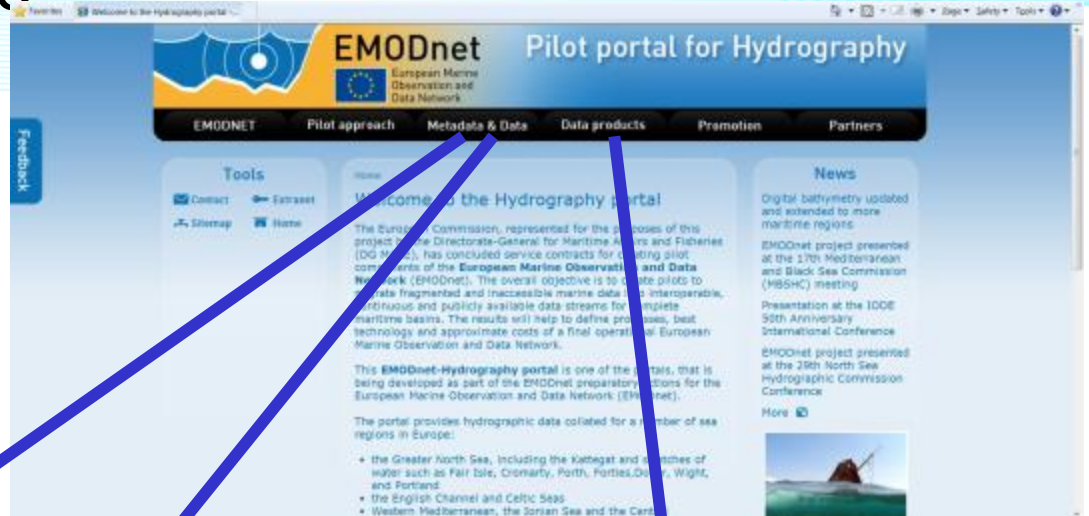
- ↓ MARIS – NL (Management, DM and IT expertise)
- ↓ IFREMER – FR (Research institute)
- ↓ GGSGC – NL (IT expertise, DM hydrography)
- ↓ IEO – ES (Research institute)
- ↓ NERC-NOC – UK (Research institute)
- ↓ GSI – IE (HO – Ireland)
- ↓ SHOM – FR (HO – France)
- ↓ UNEP-GRID Arendal – NO (International Organisation)
- ↓ OGS – Oceanography department (IT) (Research Institute)
- ↓ HCMR (GR) (Research Institute)

↓ **Plus Data provider agreements with HO's from Germany, Norway, Denmark, Netherlands and Belgium**

↓ **Plus Associate partners: ISMAR-CNR –IT, OGS-RIMA – IT, LNEG – PT, UTM-CSIC – ES, NIOZ - NL (Research Institutes) + IHPT – PT (HO) + OceanWise (UK) + Israeli Government, Ministry of National Infrastructures (Israel)**



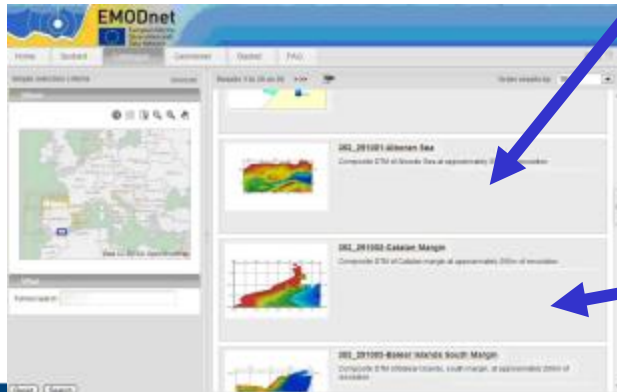
Hydrographic portal



<http://www.emodnet-hydrography.eu>

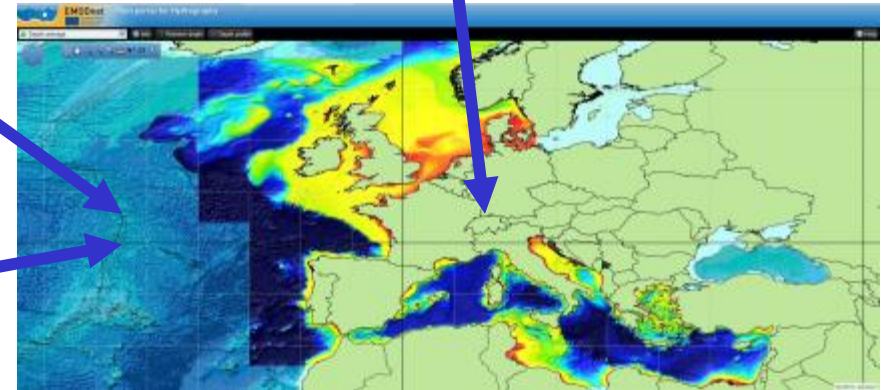


CDI metadata service



Titre de la présentation

Sextant metadata service



Data products service

Auteur - Date



Progress status 2012

- ↓ ***Up till today (since ~2010), 8400 survey CDI metadata records from 14 data centres and 114 data originators.***

- ↓ ***These survey data and other gathered composite DTMs have been collated into regional EMODNet DTM's that are available for viewing and downloading in several formats.***
 - ↓ ***OGC WMS services are available***

- ↓ ***A Data Products Metadata service has been added to give metadata related to the regional and composite DTM***



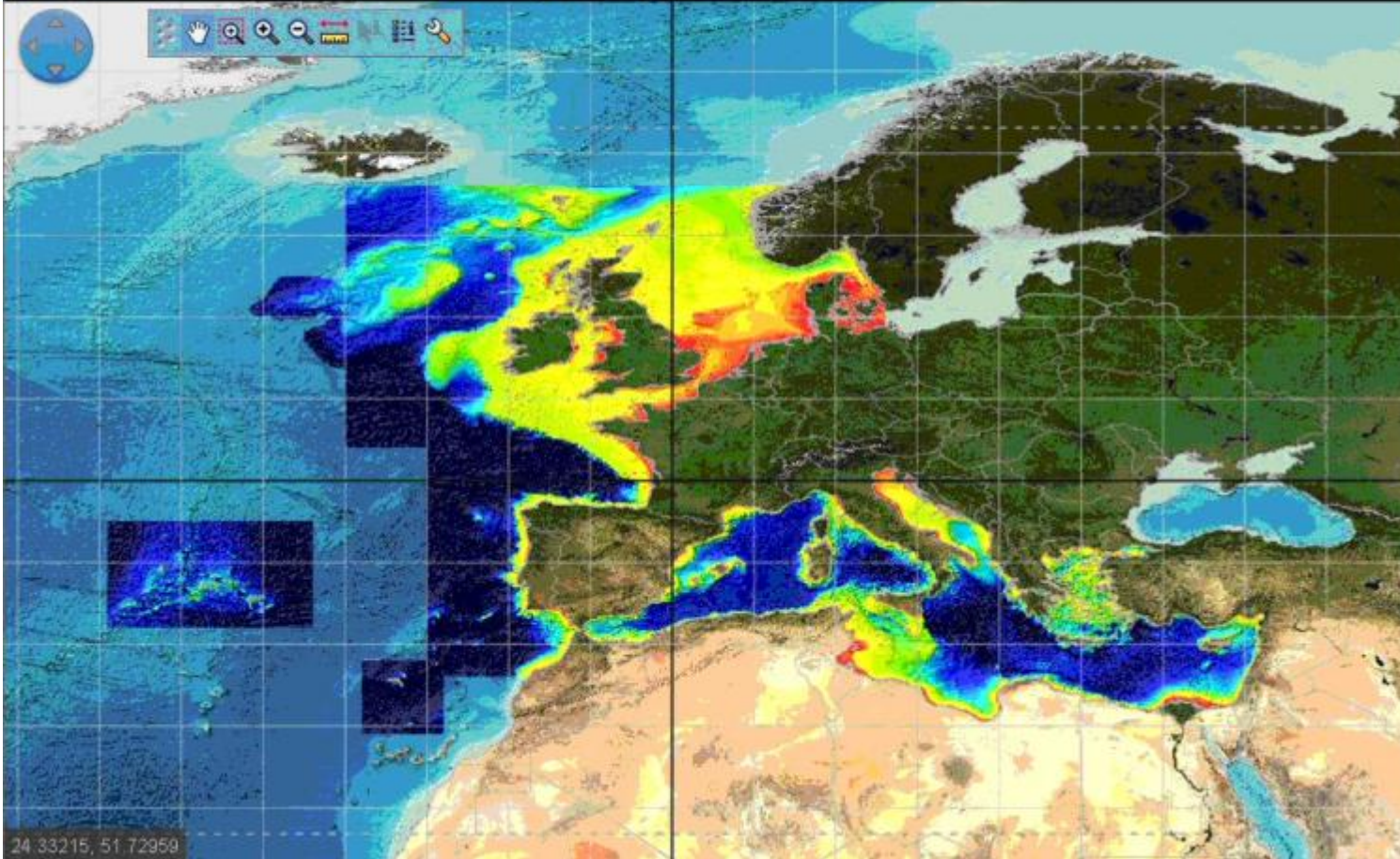
EMODnet
European Marine
Observation and
Data Network

Pilot portal for Hydrography

Depth Average

Retrieve depth

Depth profile





EMODnet



Pilot portal for Hydrography

Depth Average

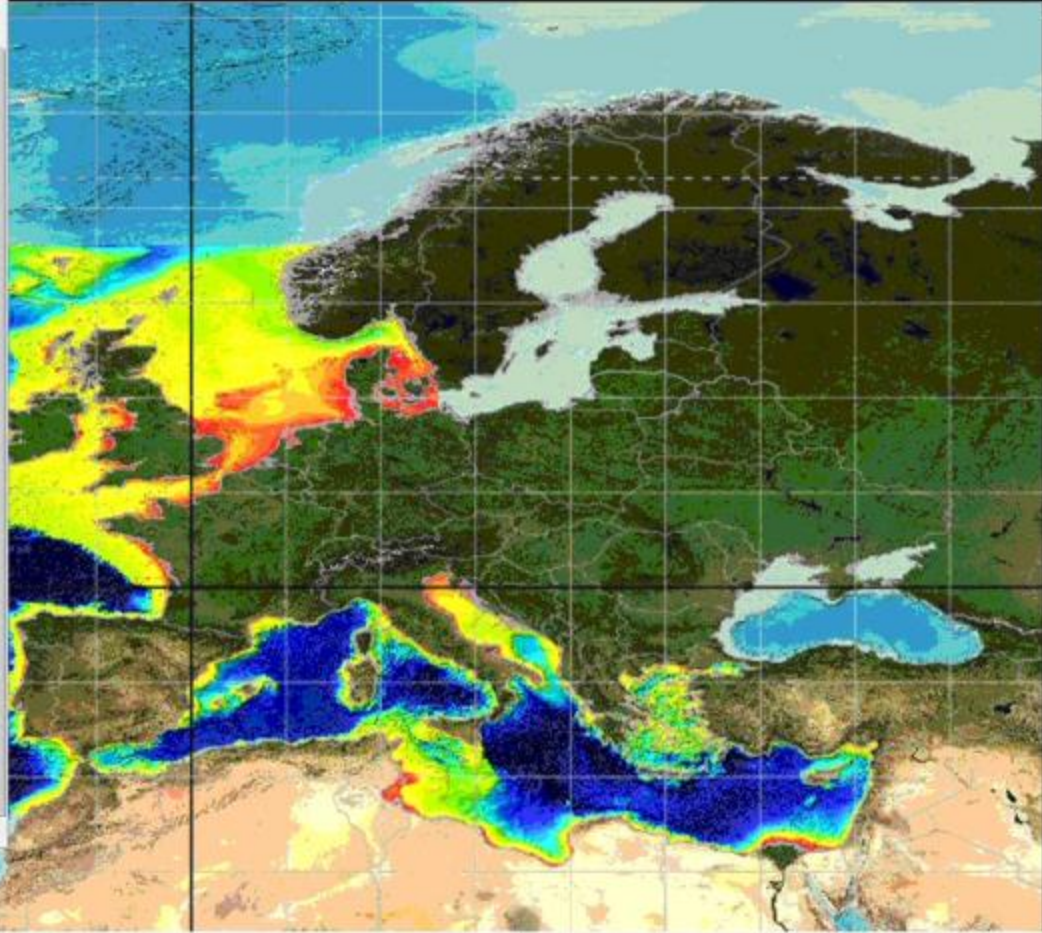
Retrieve depth

Depth profile

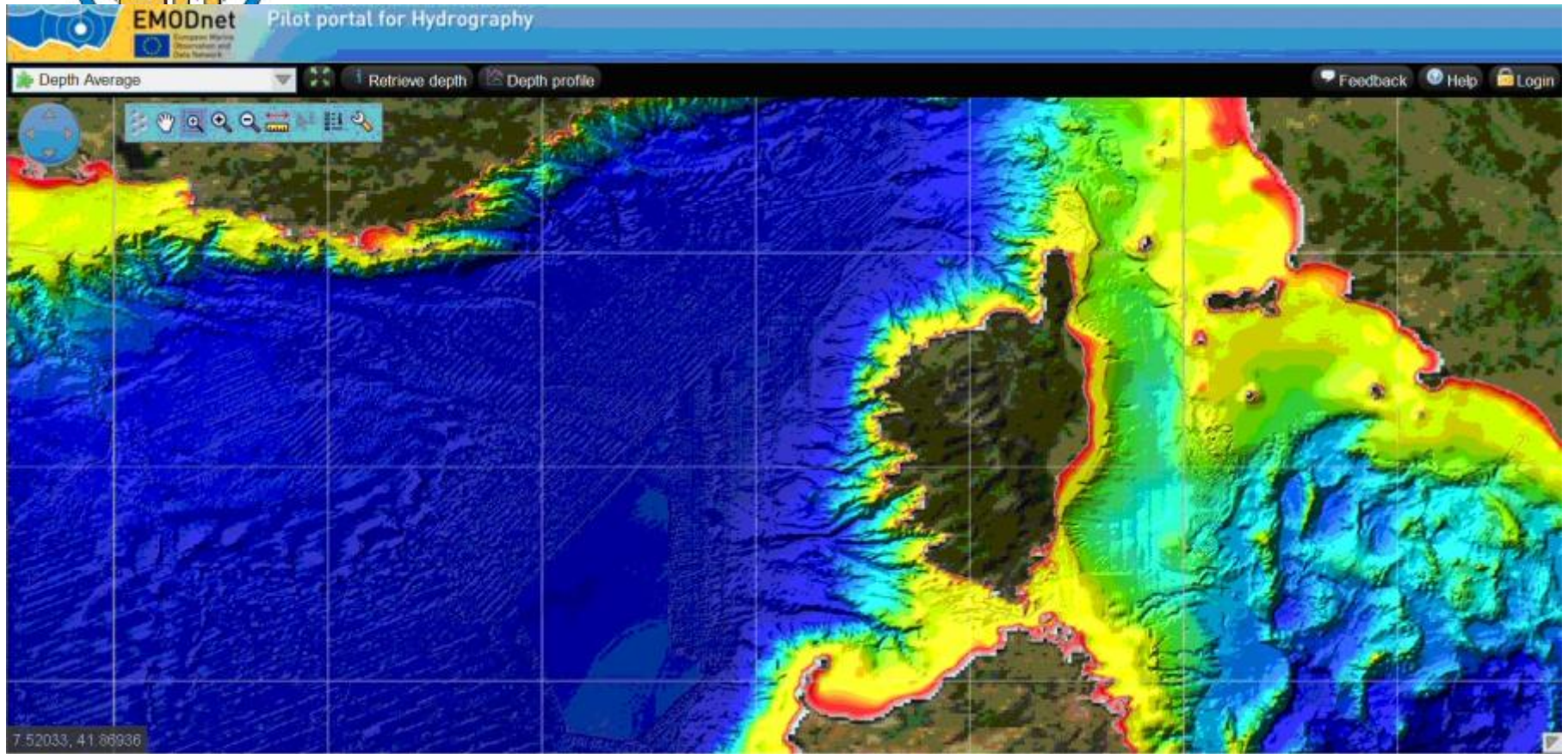
- emodnet:mean_singlecolour
- EXTRA
- Geographic grid
- Download bathymetry
- Global coastline (GSHHS)
- Source Reference
- Survey tracks / polygons from CDI service
- DTM Components
- Underwater Features: Wrecks
- Depth contours
- Depth Standard deviation
- Depth Average
- Depth Smoothed
- Depth Average in 1 colour
- Depth Smoothed in 1 colour
- GEBCO bathymetry
- EMODnet Chemistry stations
- Geo-Seas data

Add layer

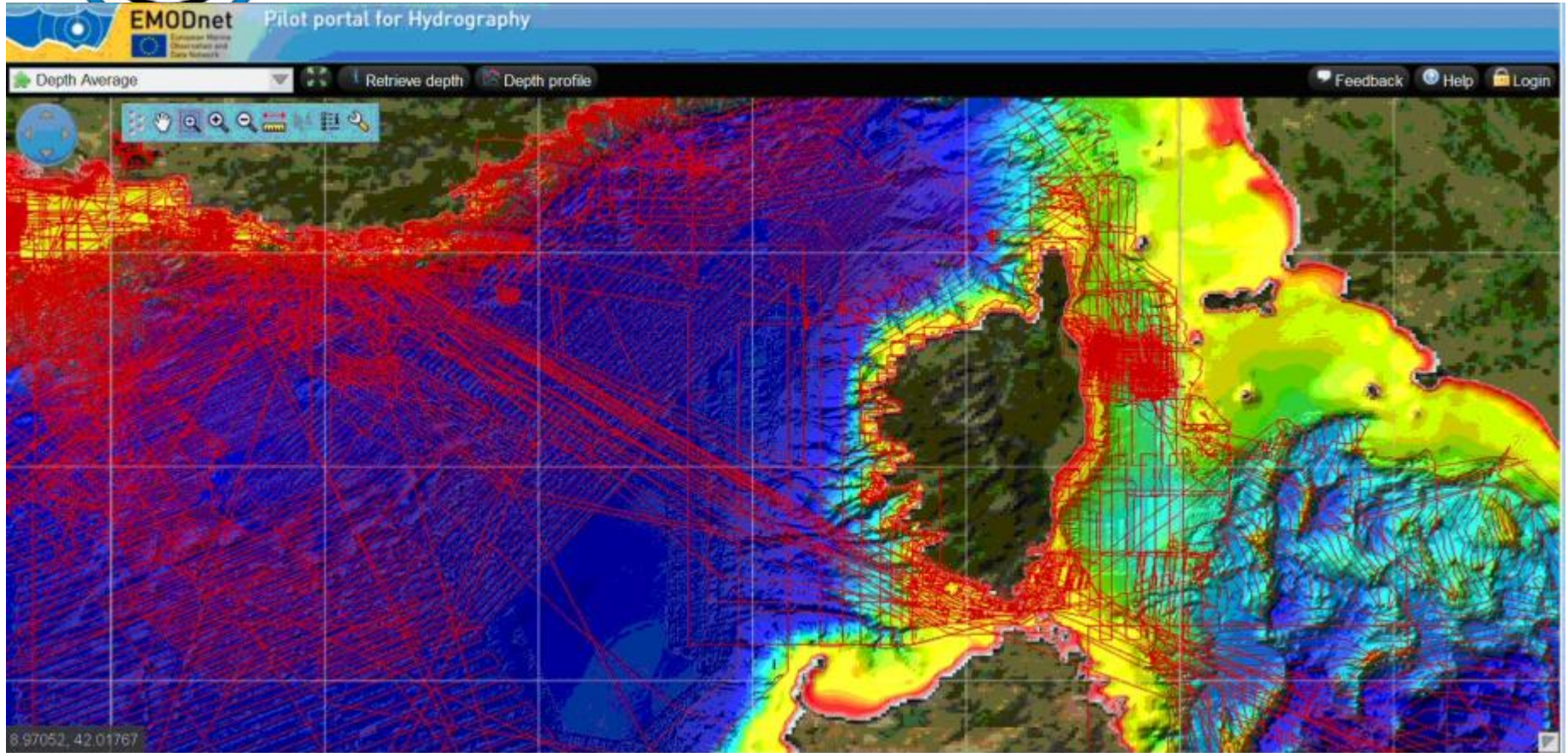
1.34876, 33.11875

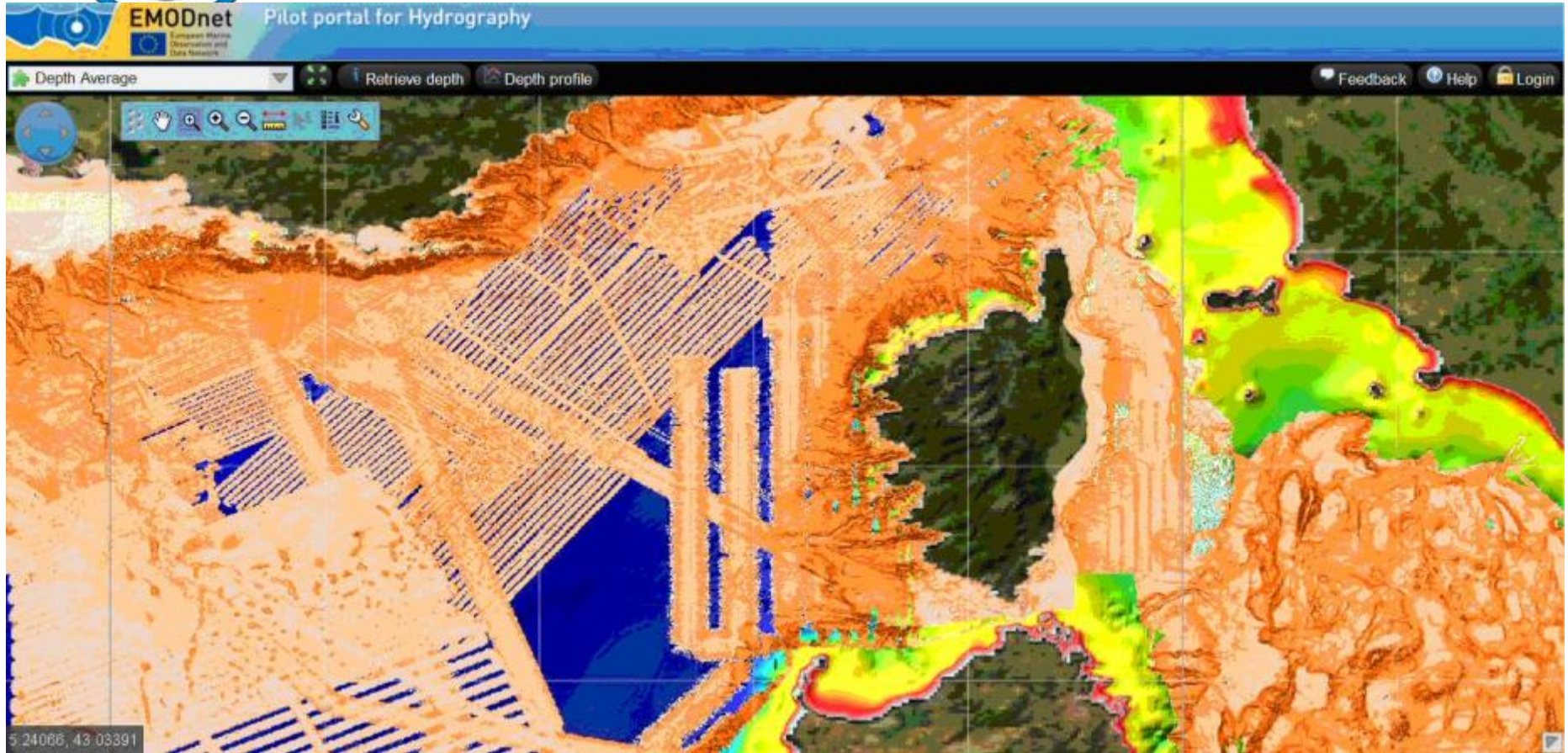


Hydrographic Data Products viewing service



Hydrographic Data Products viewing service

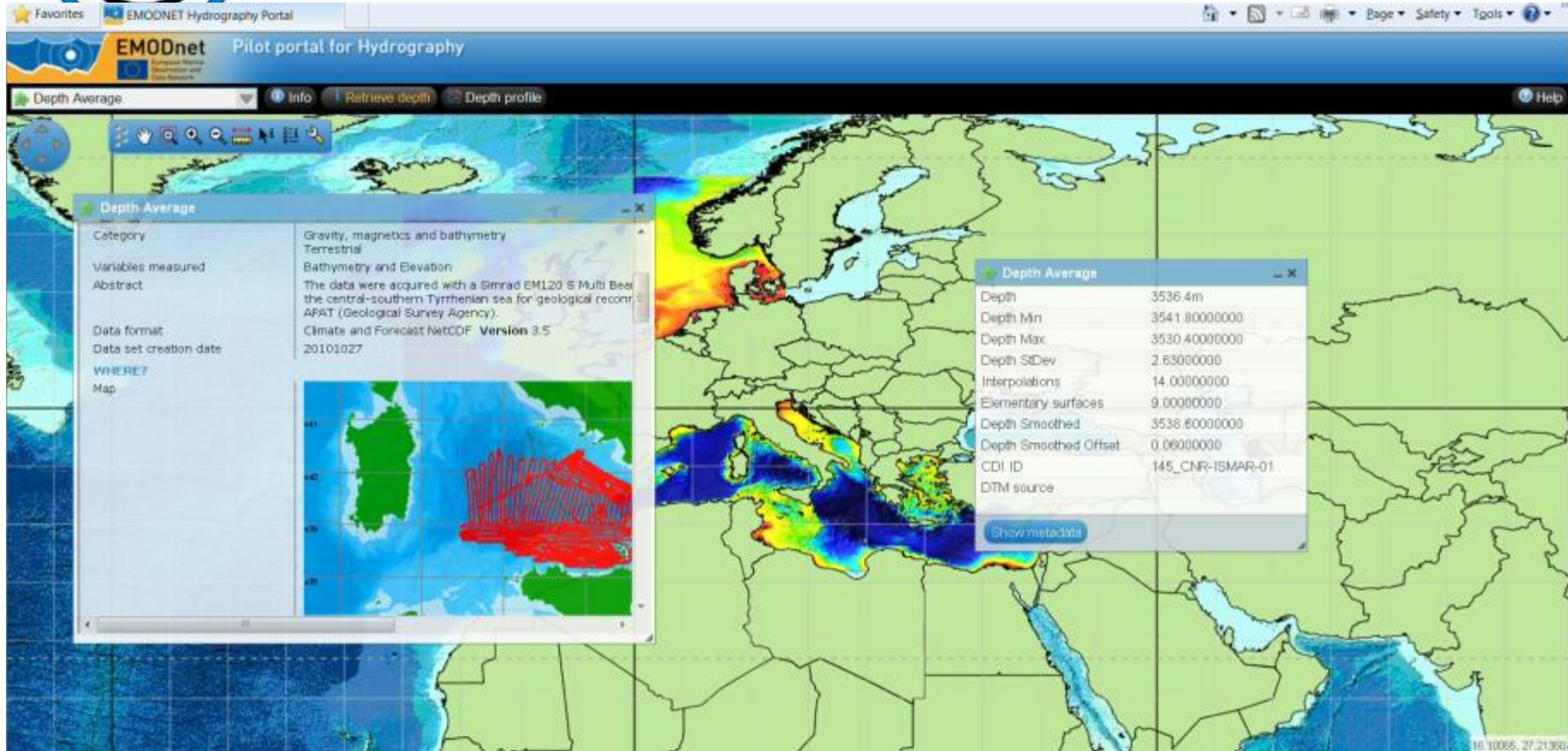




Titre de la présentation

Auteur - Date







EMODnet Pilot portal for Hydrography

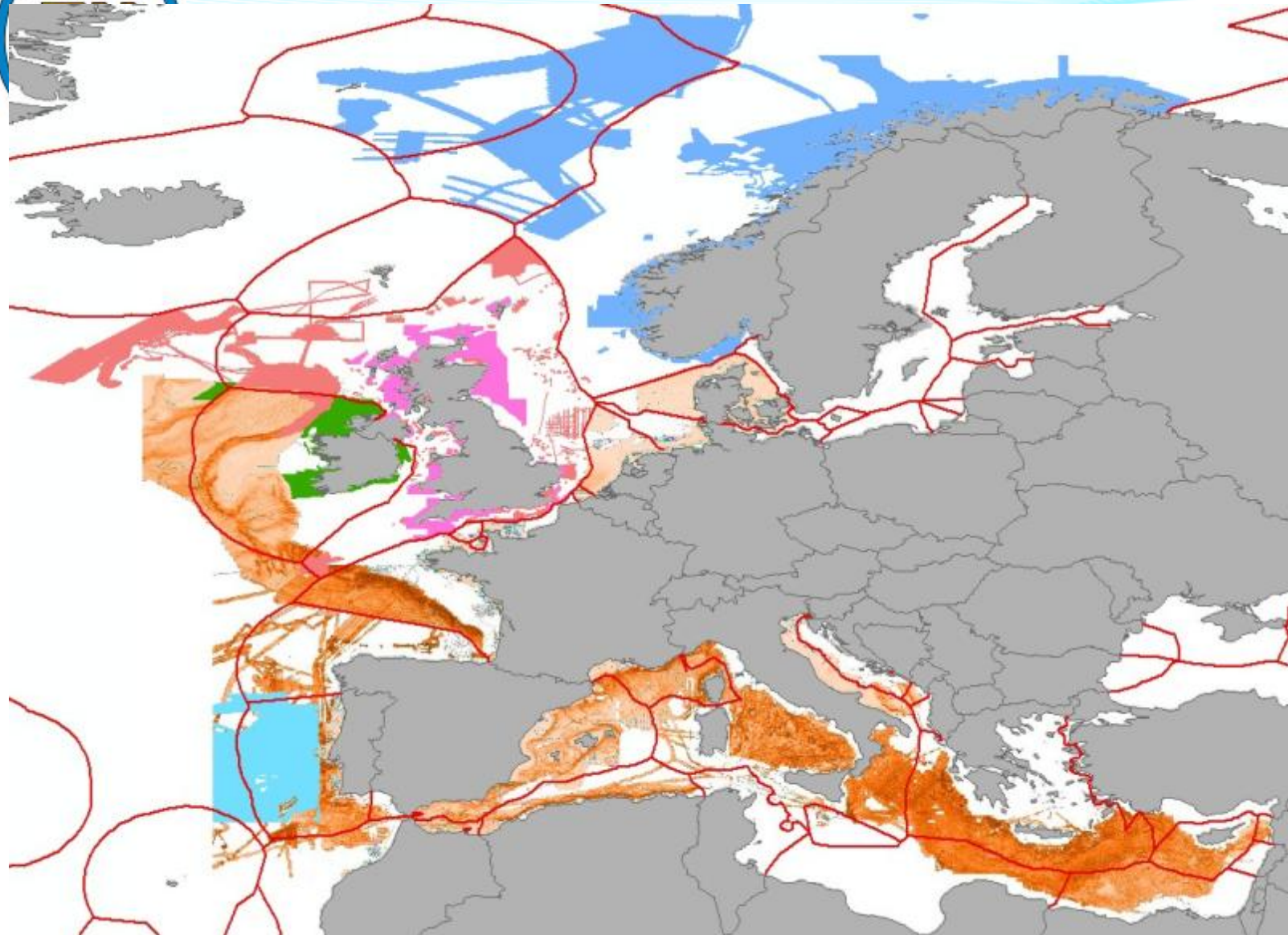
Download bathymetry | Download all files | Feedback | Help | Login

Celtic Seas

Select the file type for your download

- Download as CSV file
- Download as ESRI ASCII file
- Download as GeoTiff file
- Download as NetCDF file
- Download as SD file
- Download as XYZ file

17.18907, 57.02500





EMODNet Bathymetry – new tender

- ⚓ ***Increasing the resolution of the DTM from $\frac{1}{4}$ to $\frac{1}{8}$ of a minute of lat – lon ($\sim 225 \text{ m} * 225 \text{ m}$)***
- ⚓ ***Covering missing sea basins:***
 - ⚓ ***Black Sea***
 - ⚓ ***Baltic Sea***
 - ⚓ ***Norwegian + Icelandic Sea***
- ⚓ ***Including new data sets from existing partners***
- ⚓ ***Consortium expanded with new partners and associate partners, including GEBCO***
- ⚓ ***Prototype High Definition areas for very coastal areas***
- ⚓ ***Expected start, if successful, early 2013***