



INTERNATIONAL BATHYMETRIC CHART OF THE CARRIBBEAN SEA AND THE GULF OF MEXICO



Carta Batimétrica Internacional del Mar Caribe y el Golfo de México



Desarrollo de una Base de Datos Batimétrica para el Mar Caribe y el Golfo de México



- [Introducción a IBCCA](#)
- [Miembros del Comité Editorial y Lista de Participantes](#)
- [Asignación de Áreas de Responsabilidad](#)
- Hojas 1-01, 1-02, 1-03 y 1-04
 - [Imágenes a Color](#)
 - [Diccionario de Formas del Relieve Submarino](#)
- Archivos [jose.frias at inegi.org.mx](mailto:jose.frias@inegi.org.mx)
- [Reuniones](#)

[Comisión Oceanográfica Intergubernamental \(COI\)](#) [Proyectos Cartográficos Regionales](#) [GEBCO](#)

URL: <http://www.ngdc.noaa.gov/mgg/ibcca/>
maintained by: [NOAA/NGDC & WDC for GMG, Boulder](#)
Revised Martes July 17, 2012



INTERNATIONAL BATHYMETRIC CHART OF THE CARRIBBEAN SEA AND THE GULF OF MEXICO



MEMBERS

Colombia

México

Costa Rica

Cuba

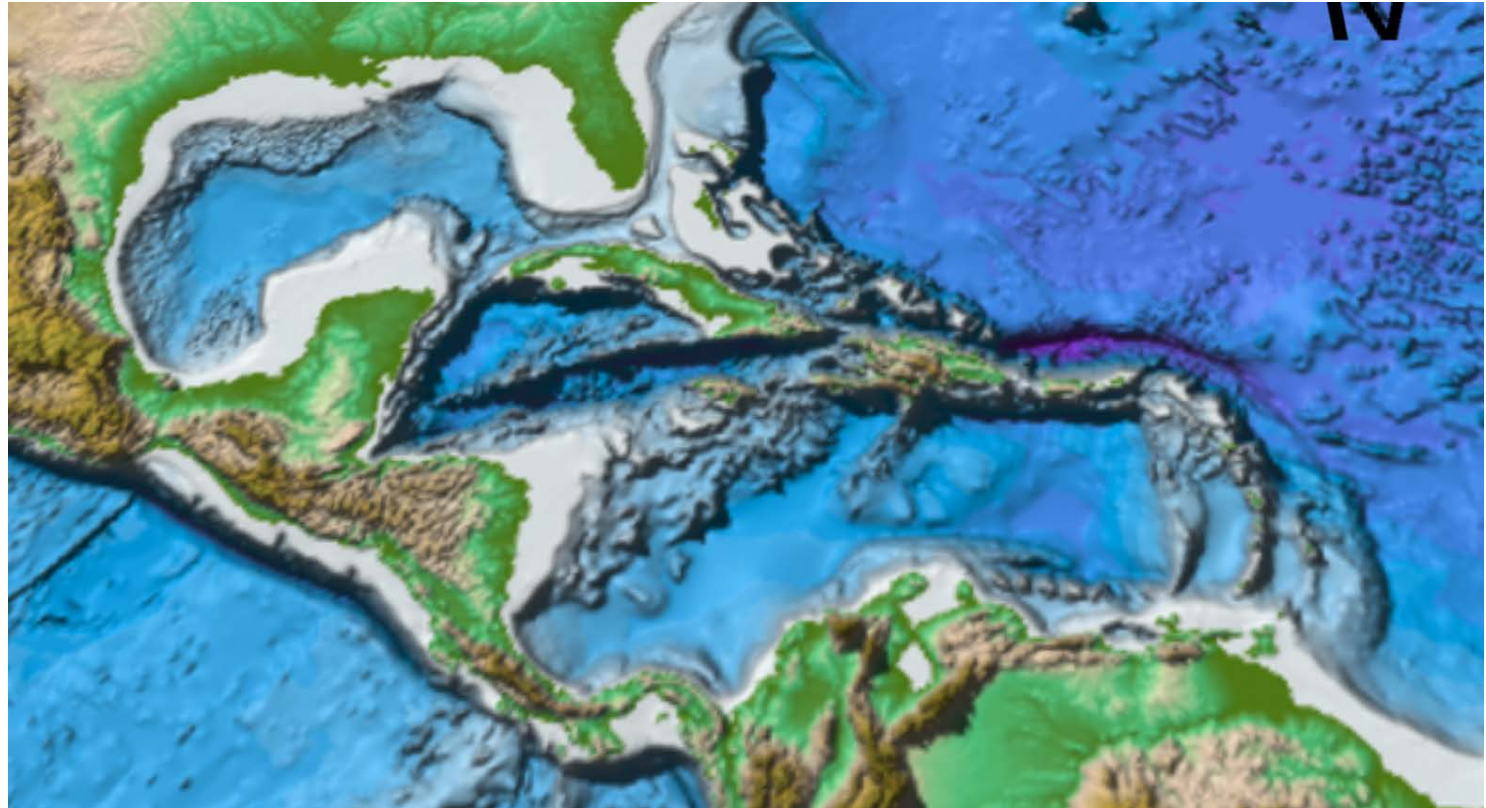
Venezuela

Francia

USA

IOC/UNESCO

IHB

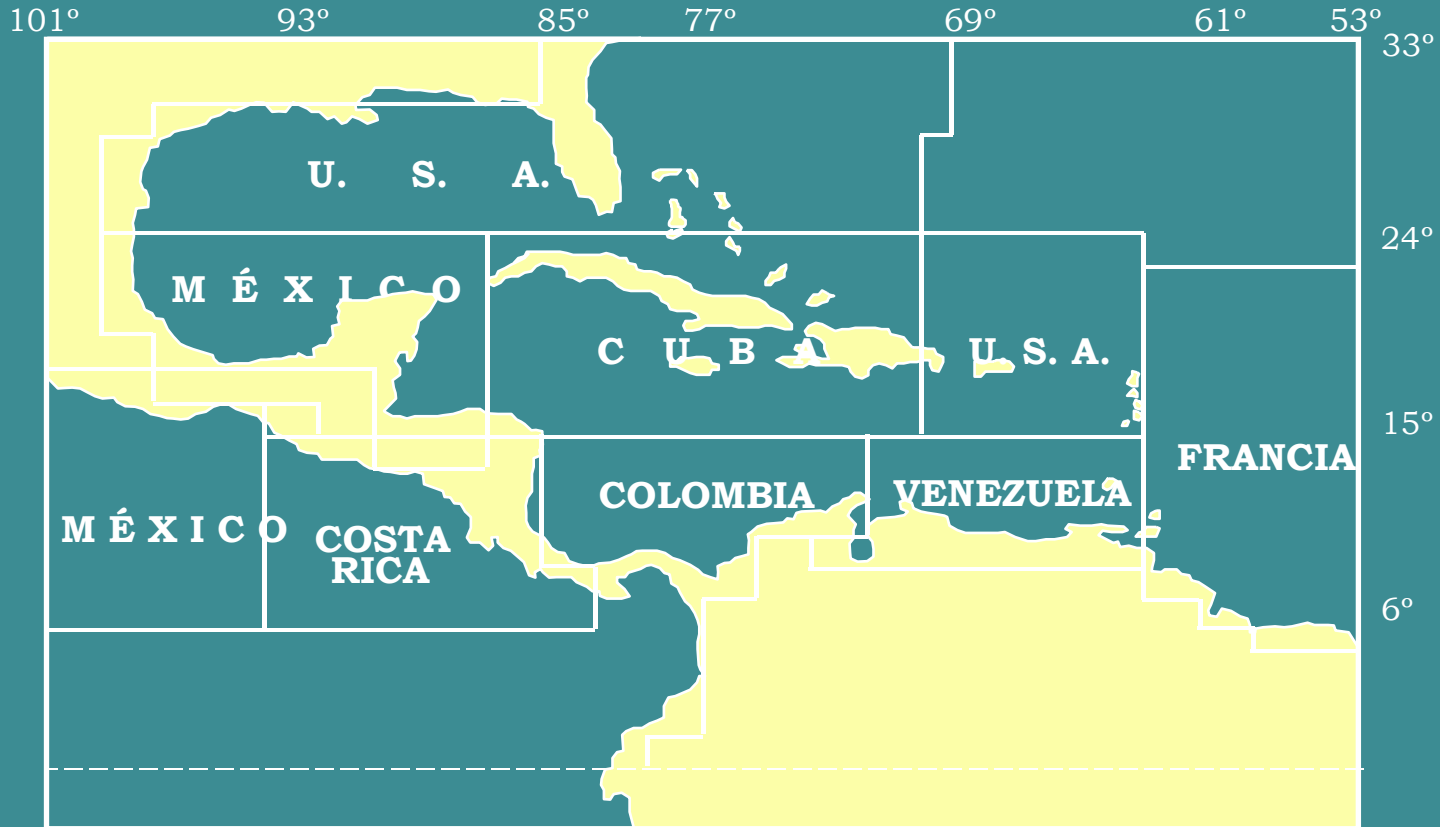




INTERNATIONAL BATHYMETRIC CHART OF THE CARRIBBEAN SEA AND THE GULF OF MEXICO

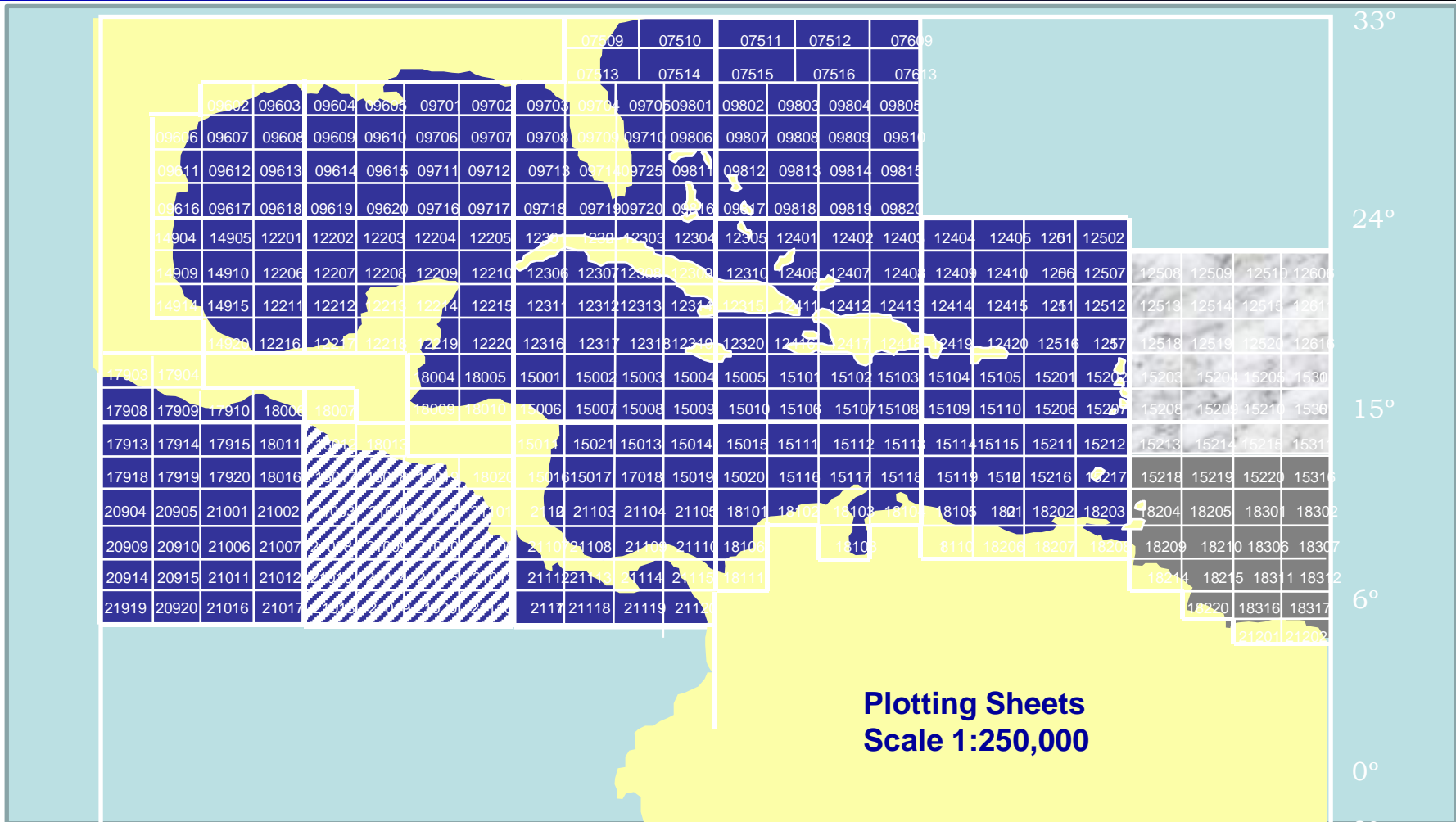


AREAS OF RESPONSIBILITY FOR IBCCA



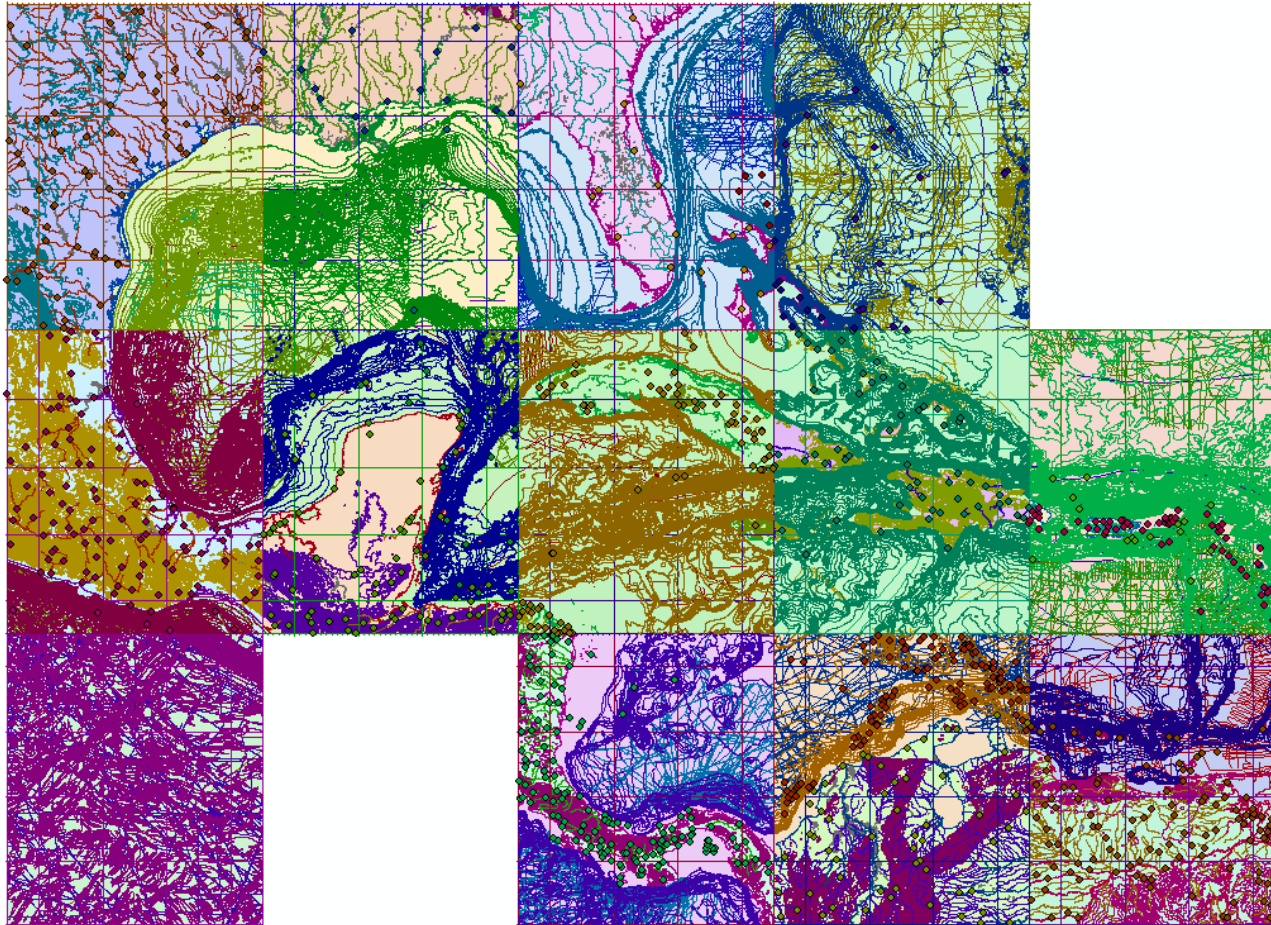


INTERNATIONAL BATHYMETRIC CHART OF THE CARRIBBEAN SEA AND THE GULF OF MEXICO





INTERNATIONAL BATHYMETRIC CHART OF THE CARRIBBEAN SEA AND THE GULF OF MEXICO

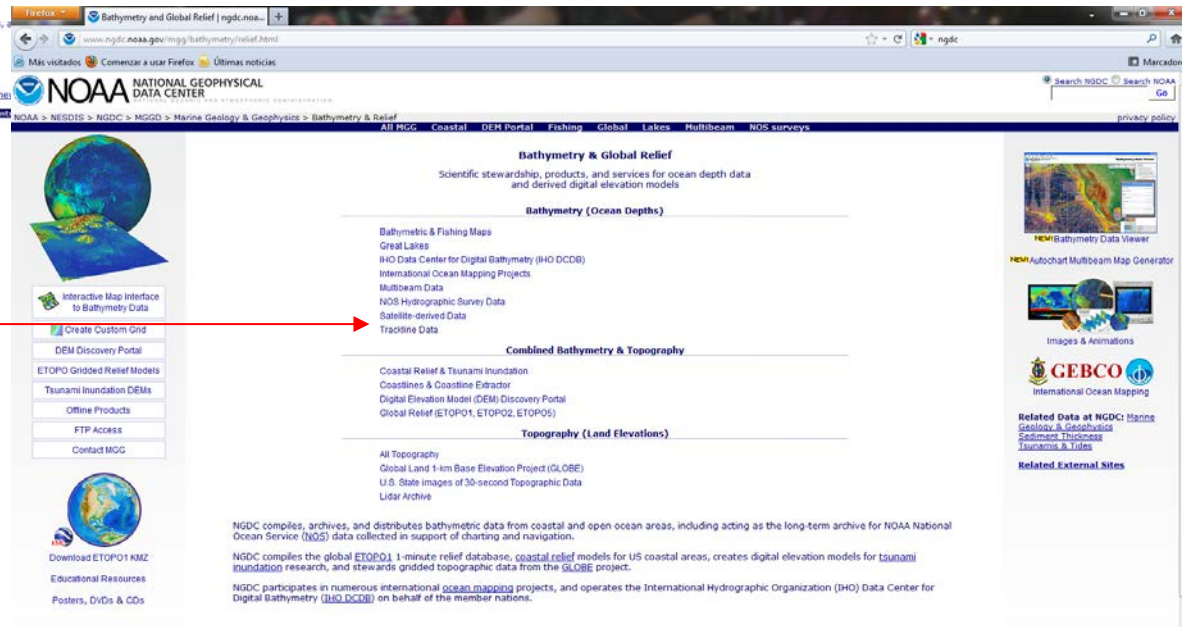




INTERNATIONAL BATHYMETRIC CHART OF THE CARRIBBEAN SEA AND THE GULF OF MEXICO



Bathymetry & Global Relief



Trackline Data



INTERNATIONAL BATHYMETRIC CHART OF THE CARRIBBEAN SEA AND THE GULF OF MEXICO



Marine Trackline Search Criteria Selection

: Windows, Digital Data, Bathymetry

Windows Macintosh UNIX-LE (Linux-X86, etc.) UNIX-BE (Sun, etc.)

Title of Search:

Analog Data Digital Data Analog Or Digital Data

Rectangle Area in decimal degrees

Upper Latitude:

Left Longitude: Right Longitude:

Lower Latitude:

Parameters Surveyed

Bathymetry

Magnetics

Gravity

Single Channel Seismic Reflection

CDP Seismic Reflection

Side Scan Sonar

Seismic Refraction

Digital Shot Pt Navigation

Process Digital Data

Process Non-Seismic Digital Data for Download

Title of Search:

Download File-saving Options

Single File of All Survey Data in Area

Multiple Survey Files, Data in Search Area

Format of Output Data

MGD77T Tab-Delimited Format

MGD77 ASCII Exchange Format

HYD93 ASCII Exchange Format

Binary HYD93 CD-ROM Format

Space Delimited XYZ Format

Longitude

Latitude

(choose z field)

Uncorrected Depth (meters)

Corrected Depth (meters)

Mag Total Field (gammas)

Mag Res. Field (gammas)

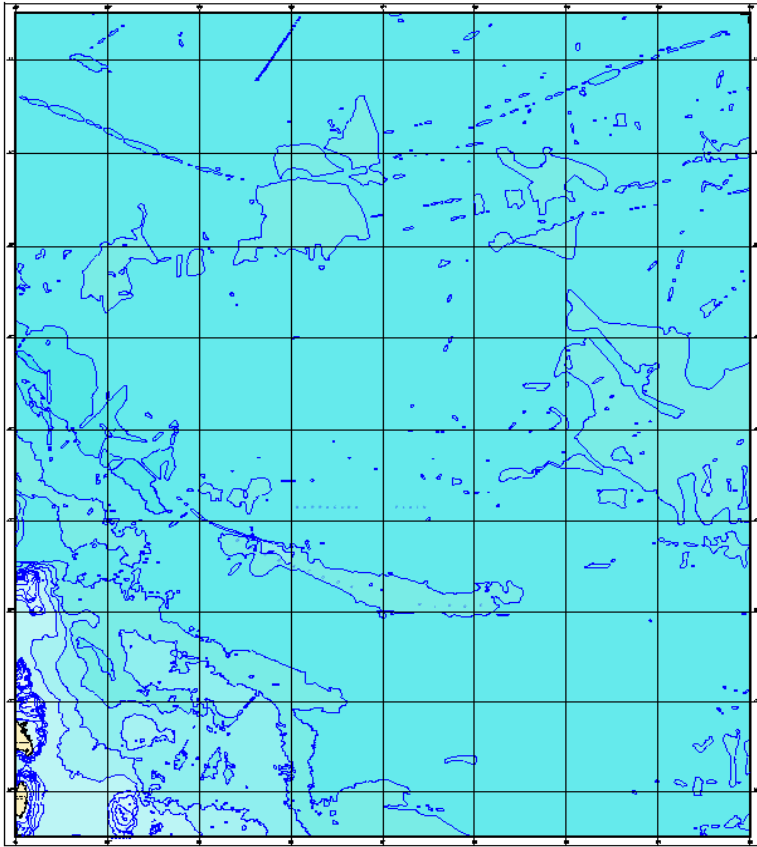
Grav Observed (mgals)

Grav Free Air (mgals)

Convert uncorrected depths to corrected meters using Carter's Tables



INTERNATIONAL BATHYMETRIC CHART OF THE CARRIBBEAN SEA AND THE GULF OF MEXICO



1 -10 Escala:1:1.000.000

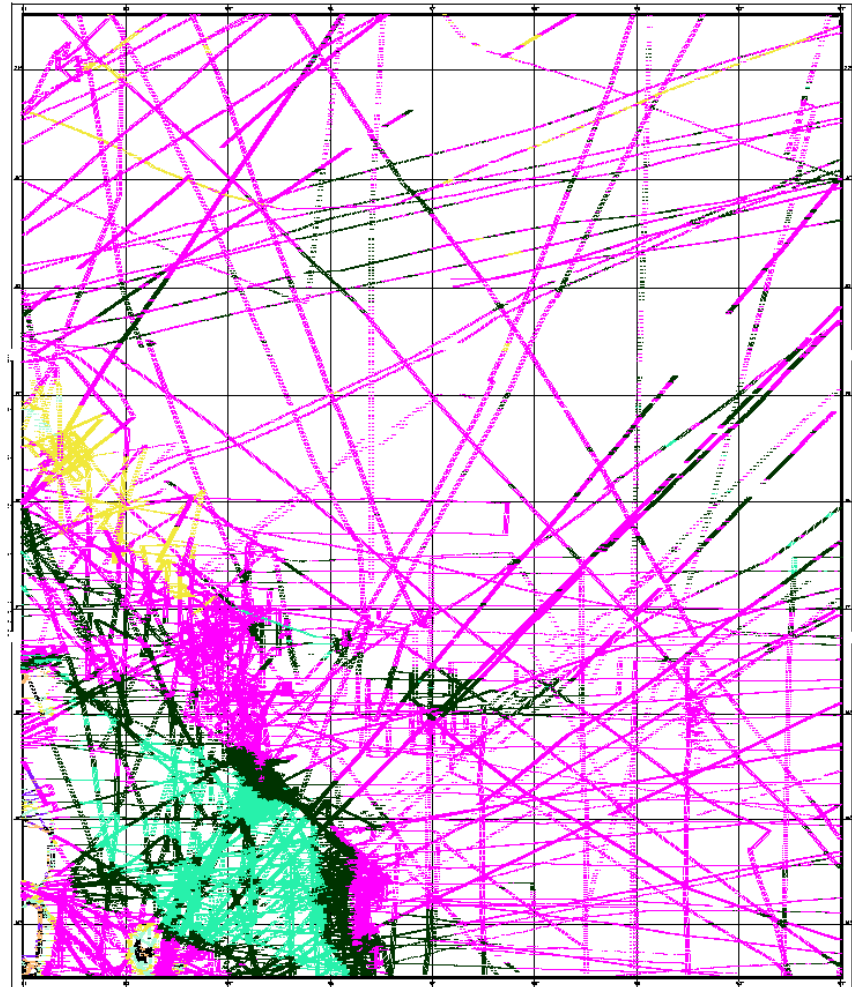
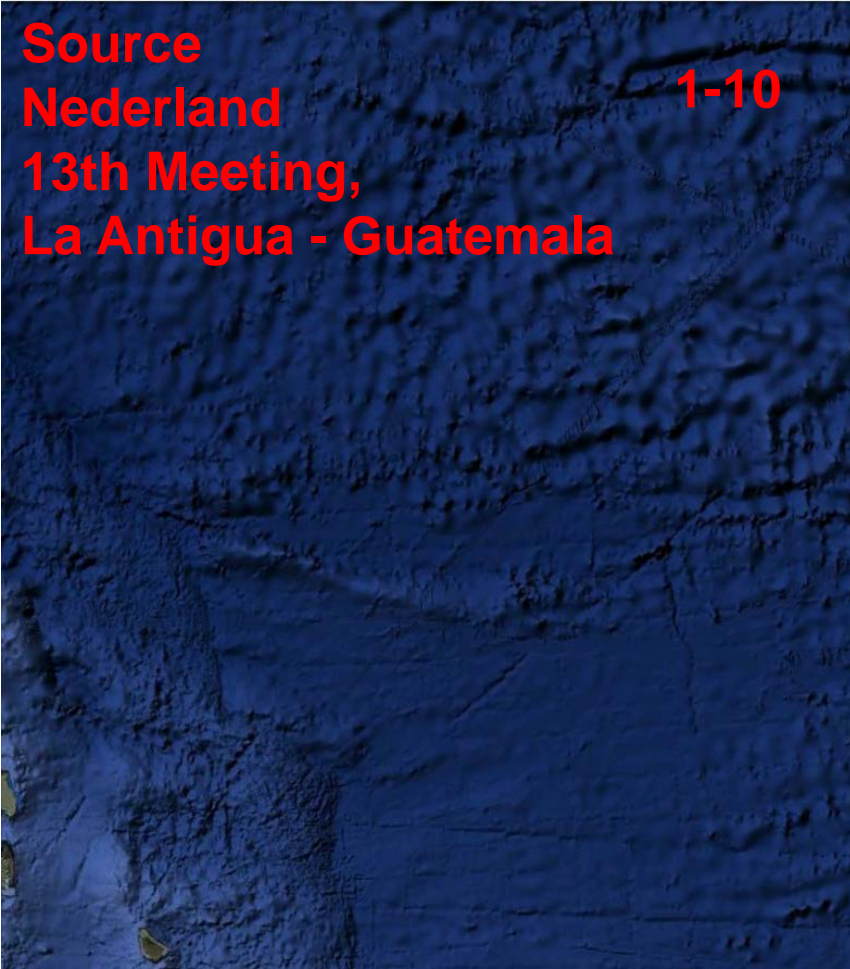
Ubicada al Este de las Antillas Menores, tal como lo muestra la imagen en la distribución de planchas.



INTERNATIONAL BATHYMETRIC CHART OF THE CARRIBBEAN SEA AND THE GULF OF MEXICO

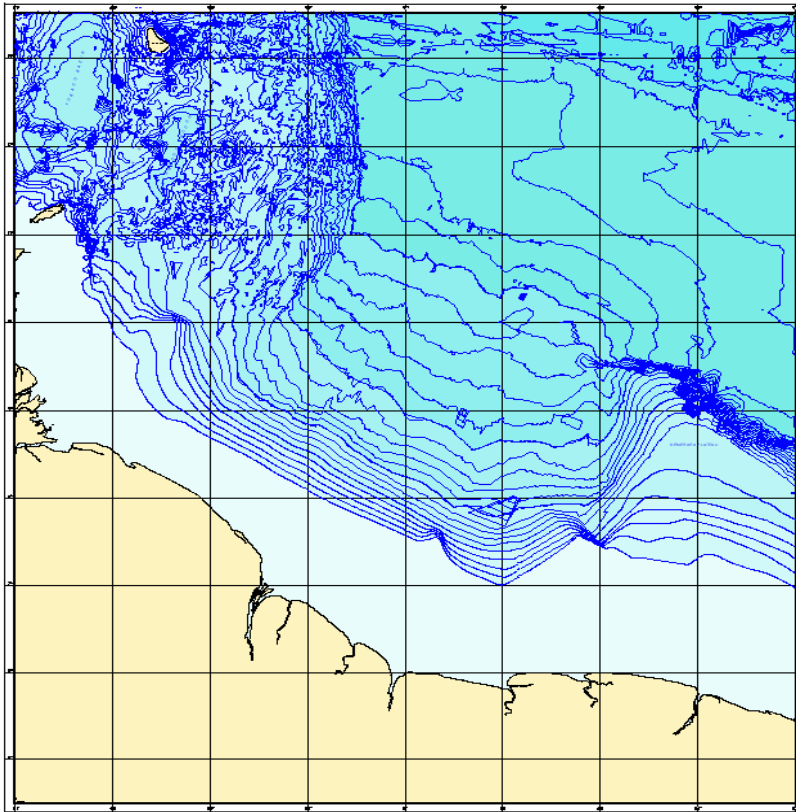


Source
Nederland 1-10
13th Meeting,
La Antigua - Guatemala





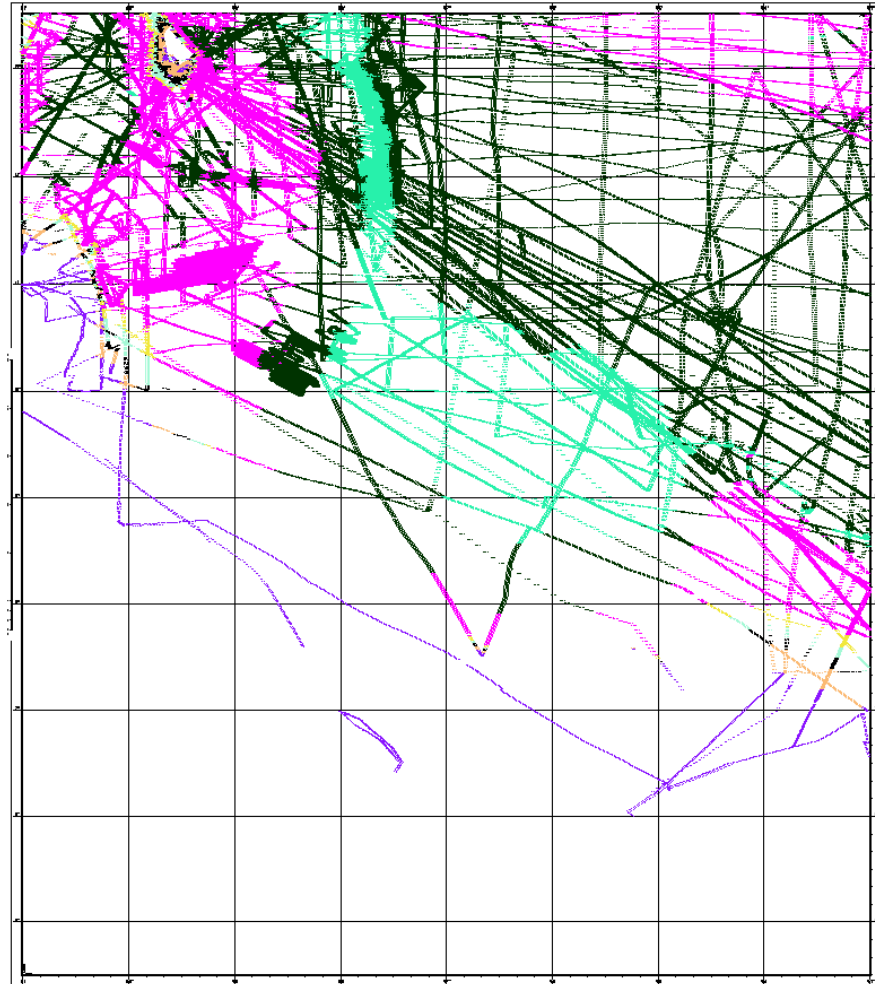
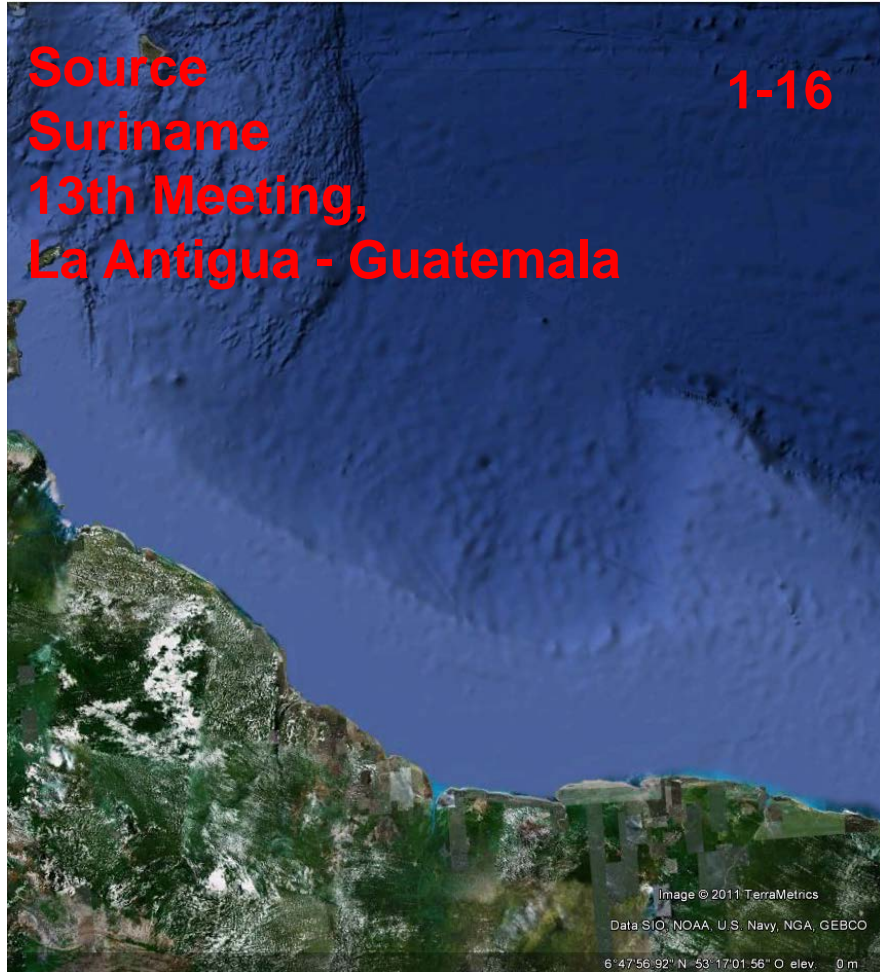
INTERNATIONAL BATHYMETRIC CHART OF THE CARRIBBEAN SEA AND THE GULF OF MEXICO



1 -16 Escala:1:1.000.000



INTERNATIONAL BATHYMETRIC CHART OF THE CARRIBBEAN SEA AND THE GULF OF MEXICO





INTERNATIONAL BATHYMETRIC CHART OF THE CARRIBBEAN SEA AND THE GULF OF MEXICO



THANK YOU