



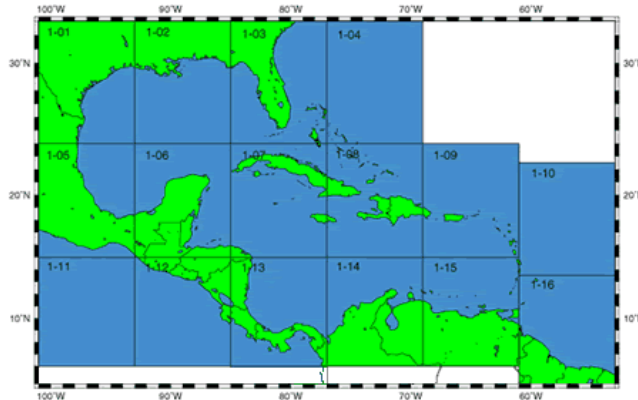
# INTERNATIONAL BATHYMETRIC CHART OF THE CARRIBBEAN SEA AND THE GULF OF MEXICO



## International Bathymetric Chart of the Caribbean Sea and the Gulf of Mexico



Development of a Bathymetric Data Base for the Caribbean Sea and the Gulf of Mexico



- [Introduction to IBCCA](#)
- [Editorial Board Members & Working Participants](#)
- [Assignment of Responsibility by Area](#)
- Areas 1-01, 1-02, 1-03 & 1-04
  - [Color Images](#)
  - [Gazetteer of Undersea Feature Names](#)
- Data: [jose.frias at inegi.gob.mx](mailto:jose.frias@inegi.gob.mx)
- [Meetings](#)

[Intergovernmental Oceanographic Commission \(IOC\)](#) [Regional Mapping Projects](#) [GEBCCO](#)

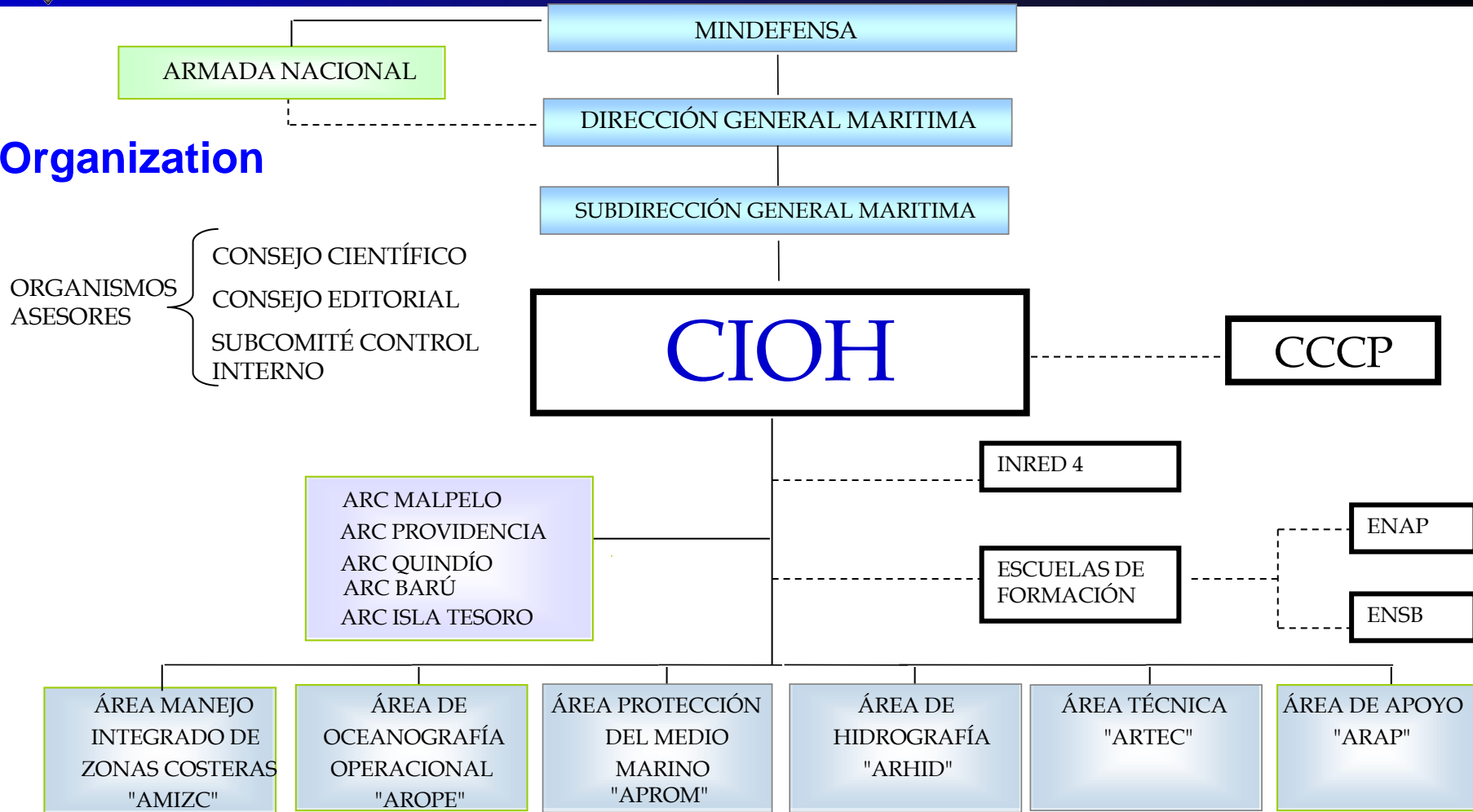
URL: <http://www.ngdc.noaa.gov/mgg/ibcca/>  
maintained by: [NOAA/NGDC & WDC for GMG, Boulder](#)  
Revised Friday February 10, 2009



# INTERNATIONAL BATHYMETRIC CHART OF THE CARRIBBEAN SEA AND THE GULF OF MEXICO



## Organization



ORGANISMOS ASESORES

- CONSEJO CIENTÍFICO
- CONSEJO EDITORIAL
- SUBCOMITÉ CONTROL INTERNO



# INTERNATIONAL BATHYMETRIC CHART OF THE CARRIBBEAN SEA AND THE GULF OF MEXICO



## Capabilities

### Sistema Multihaz BUQUE ARC PROVIDENCIA



ECOSONDA MULTHAZ  
ATLAS HYDROSWEEP MD-2-30

SISTEMA DE POSICIONAMIENTO  
DGPS TRIMBLE DSM 212

SENSOR DE MOVIMIENTO  
TSS DMS3-05

GIROCOMPAS ANCHUTZ  
STANDAR 20

PERFILADOR VELOCIDAD DEL SONIDO  
VALEPORT 650-MK2



# INTERNATIONAL BATHYMETRIC CHART OF THE CARRIBBEAN SEA AND THE GULF OF MEXICO



## Capabilities

### Sistema Multihaz Lancha "MULTHAZ"



ECOSONDA MULTHAZ  
ATLAS FANSWEEP 20-200

SISTEMA DE POSICIONAMIENTO  
DGPS TRIMBLE DSM 212

SENSOR DE MOVIMIENTO  
TSS DMS3-05

GIROCOMPAS ANCHUTZ  
STANDAR 20

PERFILADOR VELOCIDAD DEL SONIDO  
VALEPROT 650-MK2



# INTERNATIONAL BATHYMETRIC CHART OF THE CARRIBBEAN SEA AND THE GULF OF MEXICO



IBCCA is a regional ocean mapping project sponsored by the Intergovernmental Oceanographic Commission (IOC) of the (UNESCO).



The initial mission of this project was to create new bathymetry for the Caribbean Sea and the Gulf of Mexico

As the compilation of the majority of areas is nearing completion, the project will begin to coordinate efforts to digitize existing geologic and geophysical maps with the intention of create digital layers for new parameters.





# INTERNATIONAL BATHYMETRIC CHART OF THE CARRIBBEAN SEA AND THE GULF OF MEXICO



## MEMBERS

**Colombia**

**México**

**Costa Rica**

**Cuba**

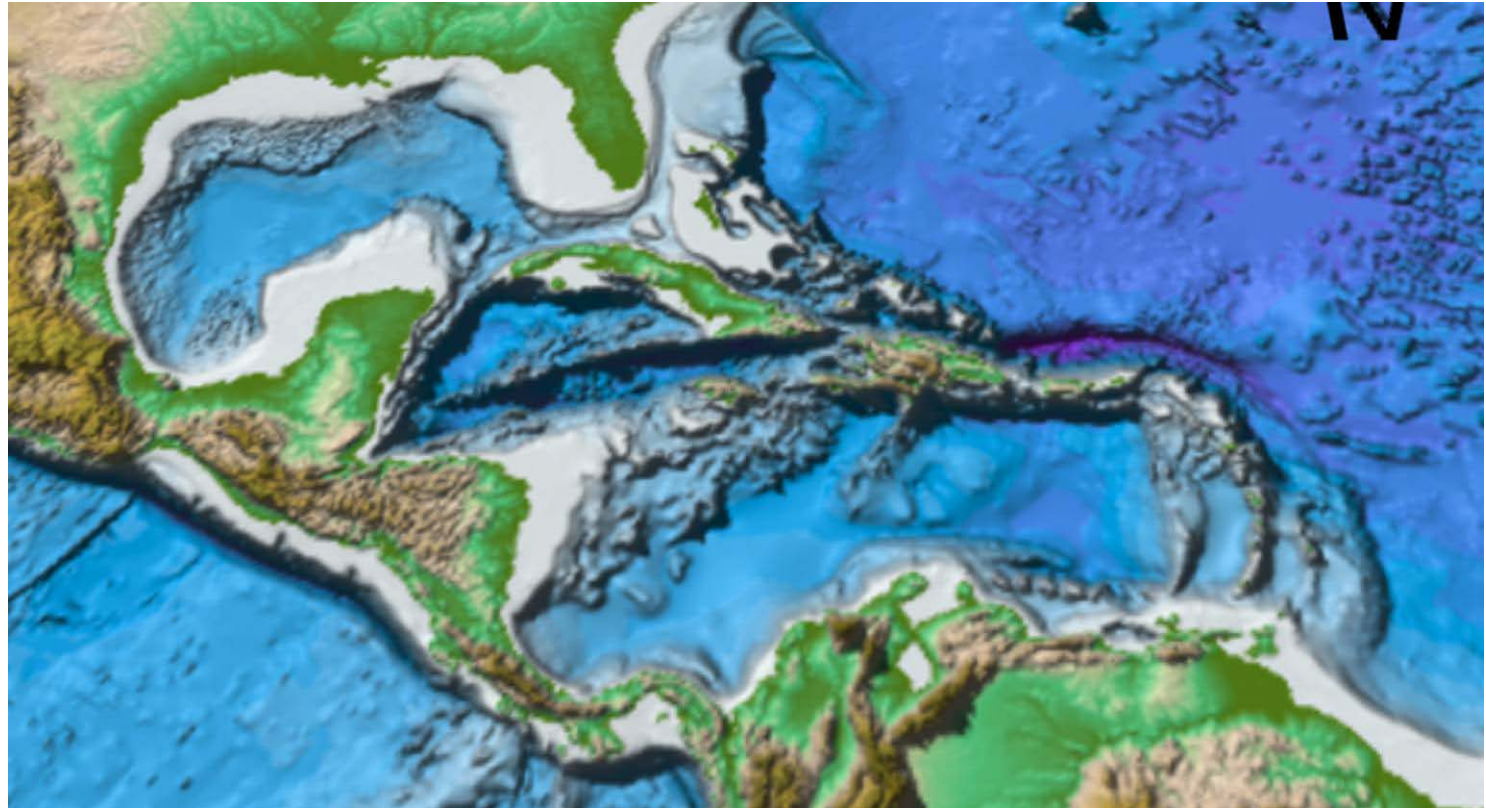
**Venezuela**

**Francia**

**USA**

**IOC/UNESCO**

**IHB**





# INTERNATIONAL BATHYMETRIC CHART OF THE CARRIBBEAN SEA AND THE GULF OF MEXICO



## Meetings

- |    |                        |      |
|----|------------------------|------|
| 1  | Aguascalientes, México | 1986 |
| 2  | Boulder, Colorado, USA | 1988 |
| 3  | Habana, Cuba           | 1990 |
| 4  | Caracas, Venezuela     | 1992 |
| 5  | Cartagena, Colombia    | 1994 |
| 6  | San José, Costa Rica   | 1996 |
| 7  | Aguascalientes, México | 1998 |
| 8  | Boulder, Colorado, USA | 2003 |
| 9  | Cartagena, Colombia    | 2006 |
| 10 | La Habana, Cuba        | 2009 |

## Workshops

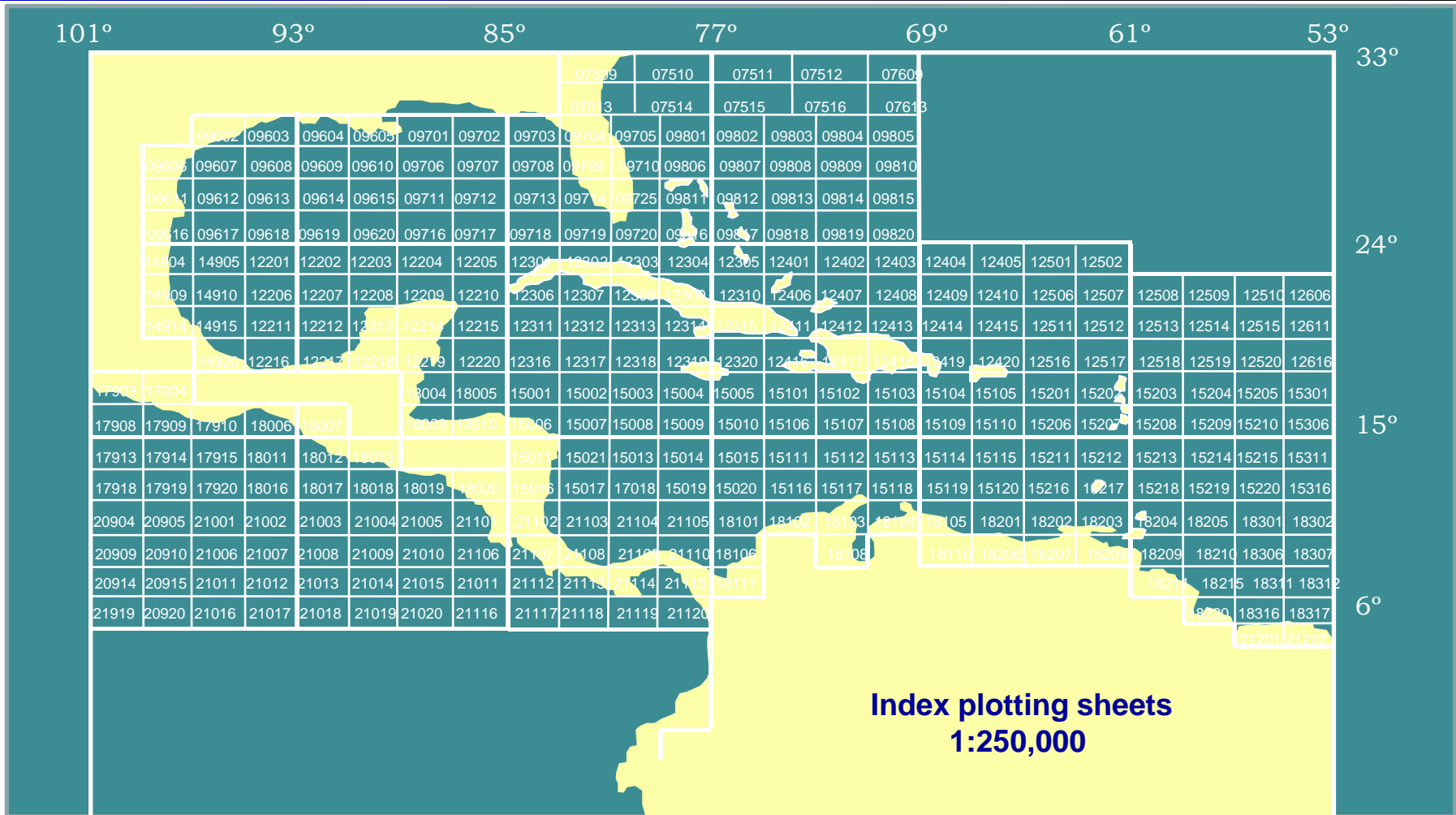
### On Data Sources and Map Compilation

- |       |                   |            |
|-------|-------------------|------------|
| 1 y 2 | Boulder, co., USA | 1988, 2003 |
|-------|-------------------|------------|





# INTERNATIONAL BATHYMETRIC CHART OF THE CARRIBBEAN SEA AND THE GULF OF MEXICO







# INTERNATIONAL BATHYMETRIC CHART OF THE CARRIBBEAN SEA AND THE GULF OF MEXICO

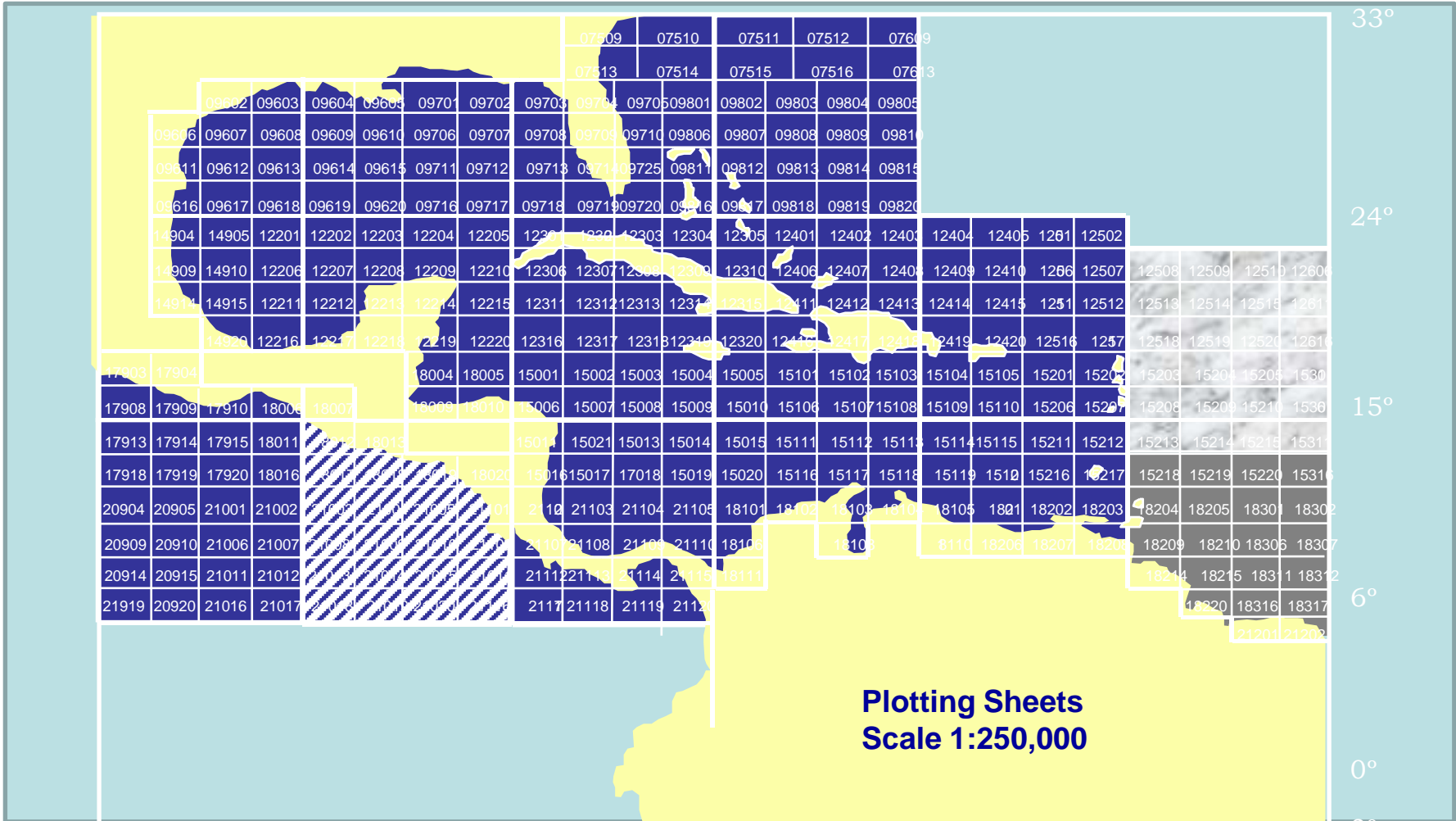


## AREAS OF RESPONSIBILITY FOR IBCCA





# INTERNATIONAL BATHYMETRIC CHART OF THE CARRIBBEAN SEA AND THE GULF OF MEXICO





# INTERNATIONAL BATHYMETRIC CHART OF THE CARRIBBEAN SEA AND THE GULF OF MEXICO



## Actual actions

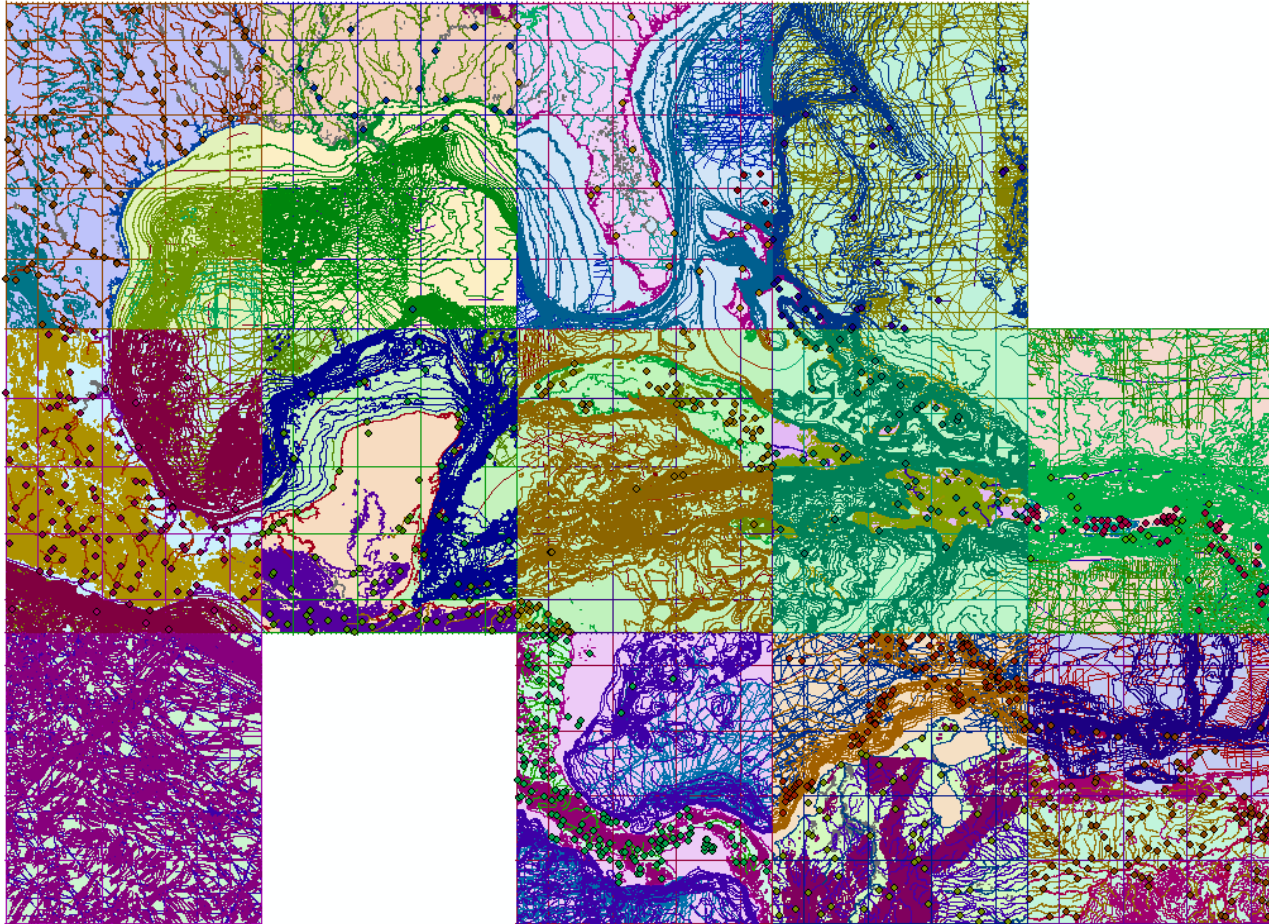
1. Recollecting the data. The digital information of all sheets was recovered
2. Colombia participated in Miami
3. We had contacted to Jesús Diaz who has 12 sheets in Mylar paper of the charts 1-10 and 1-16.
4. Sent one requirement by mail to a SHOM member asking about it.
5. Colombia is talking with the Hydrographic Service of México people about it project. In informal conversation they are interesting in work in the IBCCA project.
6. Colombia will attend the meeting in La Jolla, USA, Maybe. We back our activities in this project with more effort, as long as we find serious people who commit to working

Captain Juan Carlos Acosta Director Centro de Investigaciones Oceanográficas e Hidrográficas CIOH [jefcioh@dimar.mil.co](mailto:jefcioh@dimar.mil.co)

Master Chief Petty officer Dagoberto Uriel David Viteri, Head of cartographic branch [ddavidviteri@dimar.mil.co](mailto:ddavidviteri@dimar.mil.co)

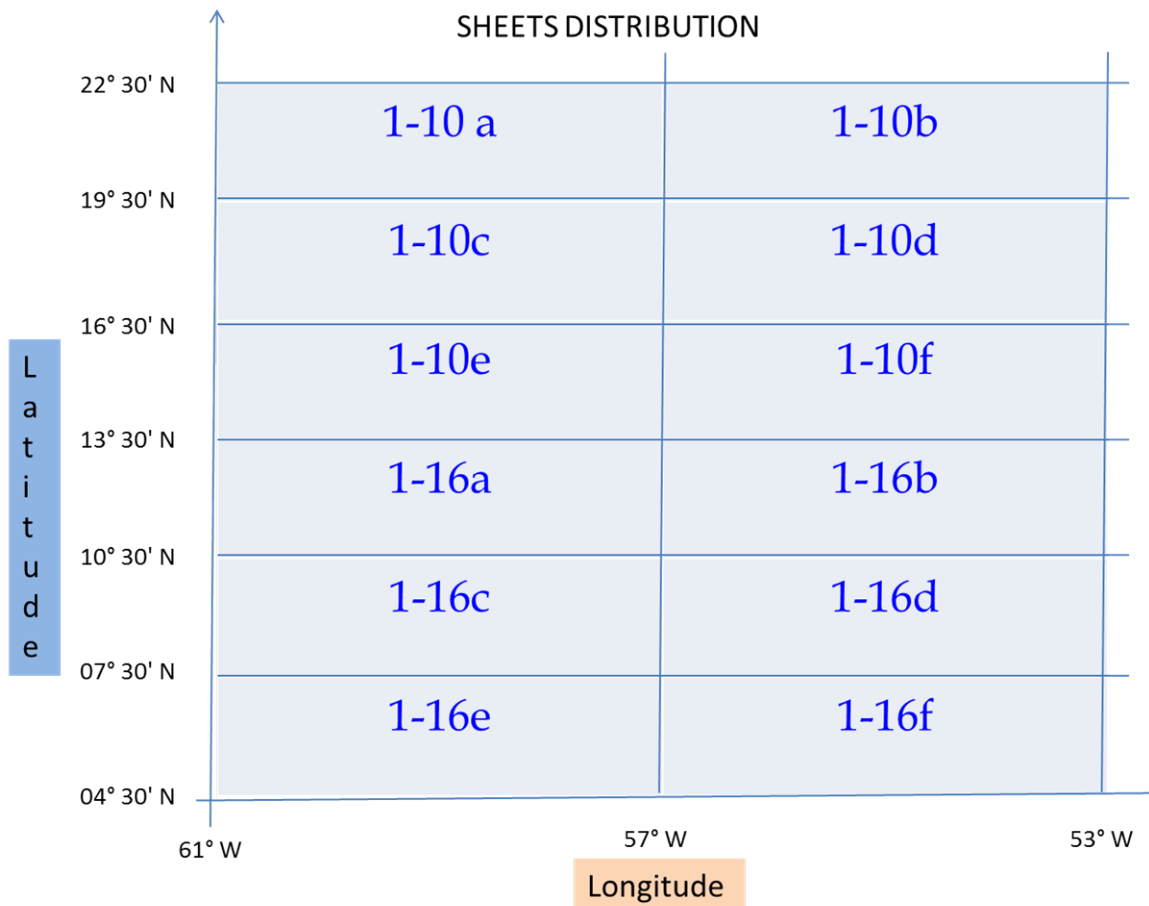


# INTERNATIONAL BATHYMETRIC CHART OF THE CARRIBBEAN SEA AND THE GULF OF MEXICO





# INTERNATIONAL BATHYMETRIC CHART OF THE CARRIBBEAN SEA AND THE GULF OF MEXICO



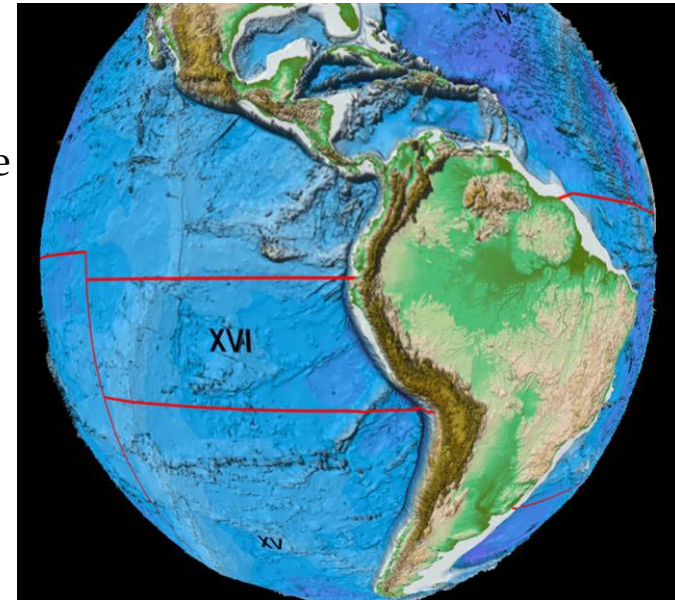


# INTERNATIONAL BATHYMETRIC CHART OF THE CARRIBBEAN SEA AND THE GULF OF MEXICO



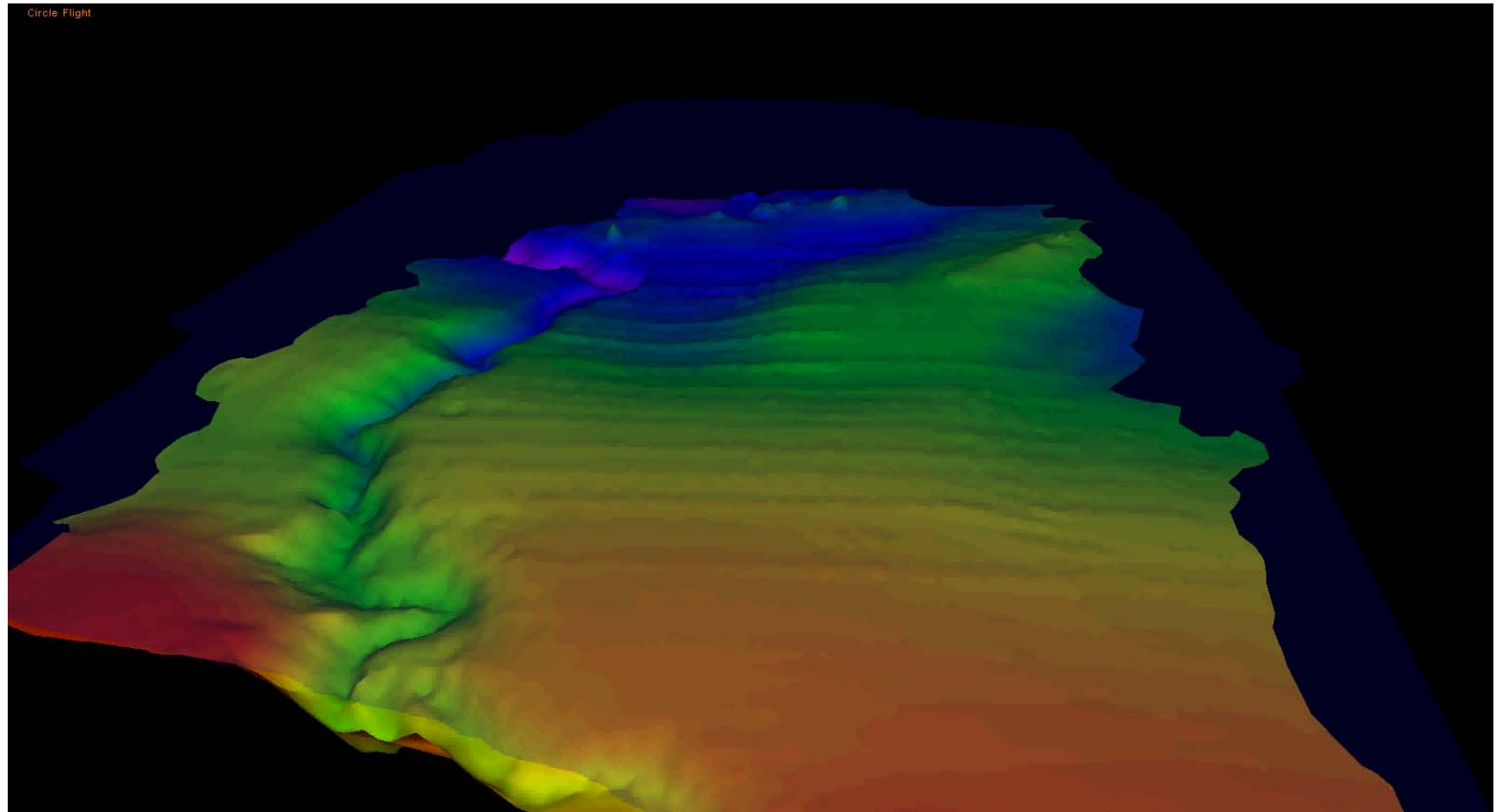
## Requirements

1. Compromise of serious persons who wish to work with commitment and do so i.e. Mexico, Venezuela,??
2. Conform one small work group for charts 1-10 and 1-16 edition
3. Budget for interpretation of the sheets recovered cartographic edition
  1. Scanner
  2. Operator for 1 year
4. Administration and updating of the data. HO better
5. Administration and updating of actual web. Mrs. Carla Moore
6. Geology experts for determination of underwater features





# INTERNATIONAL BATHYMETRIC CHART OF THE CARRIBBEAN SEA AND THE GULF OF MEXICO





# INTERNATIONAL BATHYMETRIC CHART OF THE CARRIBBEAN SEA AND THE GULF OF MEXICO



The screenshot displays the CARIS Field Sheet Editor software interface. The main window shows a bathymetric chart with depth contours and a grid overlay. The chart is titled "CARIS Field Sheet Editor - [HIPSTraining.fsh:View1]". The interface includes a menu bar (File, Edit, View, Tools, Select, Window, Help), a toolbar, and a status bar at the bottom showing coordinates (1:812, 43-04-28.06N, 070-43-35.80W).

The left sidebar contains a "Properties" panel with the following settings:

- Colour Map: Rainbow.cma
- Minimum: 16.803
- Maximum: 25.058
- Number of soundings: 47851
- Memory used by subset: 6.36 (MB)
- Rejected: 2472 (5.17%)
- Accepted: 45379 (94.83%)
- Width: 92
- Height: 70
- Min. Depth: 16.80
- Max. Depth: 25.06

The main window displays a bathymetric chart with depth contours and a grid overlay. The chart is titled "CARIS Field Sheet Editor - [HIPSTraining.fsh:View1]". The interface includes a menu bar (File, Edit, View, Tools, Select, Window, Help), a toolbar, and a status bar at the bottom showing coordinates (1:812, 43-04-28.06N, 070-43-35.80W).

The left sidebar contains a "Properties" panel with the following settings:

- General: 2D View, 3D View
- Colour Map: Rainbow.cma
- Minimum: 16.803
- Maximum: 25.058
- Number of soundings: 47851
- Memory used by subset: 6.36 (MB)
- Rejected: 2472 (5.17%)
- Accepted: 45379 (94.83%)
- Width: 92
- Height: 70
- Min. Depth: 16.80
- Max. Depth: 25.06

The main window displays a bathymetric chart with depth contours and a grid overlay. The chart is titled "CARIS Field Sheet Editor - [HIPSTraining.fsh:View1]". The interface includes a menu bar (File, Edit, View, Tools, Select, Window, Help), a toolbar, and a status bar at the bottom showing coordinates (1:812, 43-04-28.06N, 070-43-35.80W).

The left sidebar contains a "Properties" panel with the following settings:

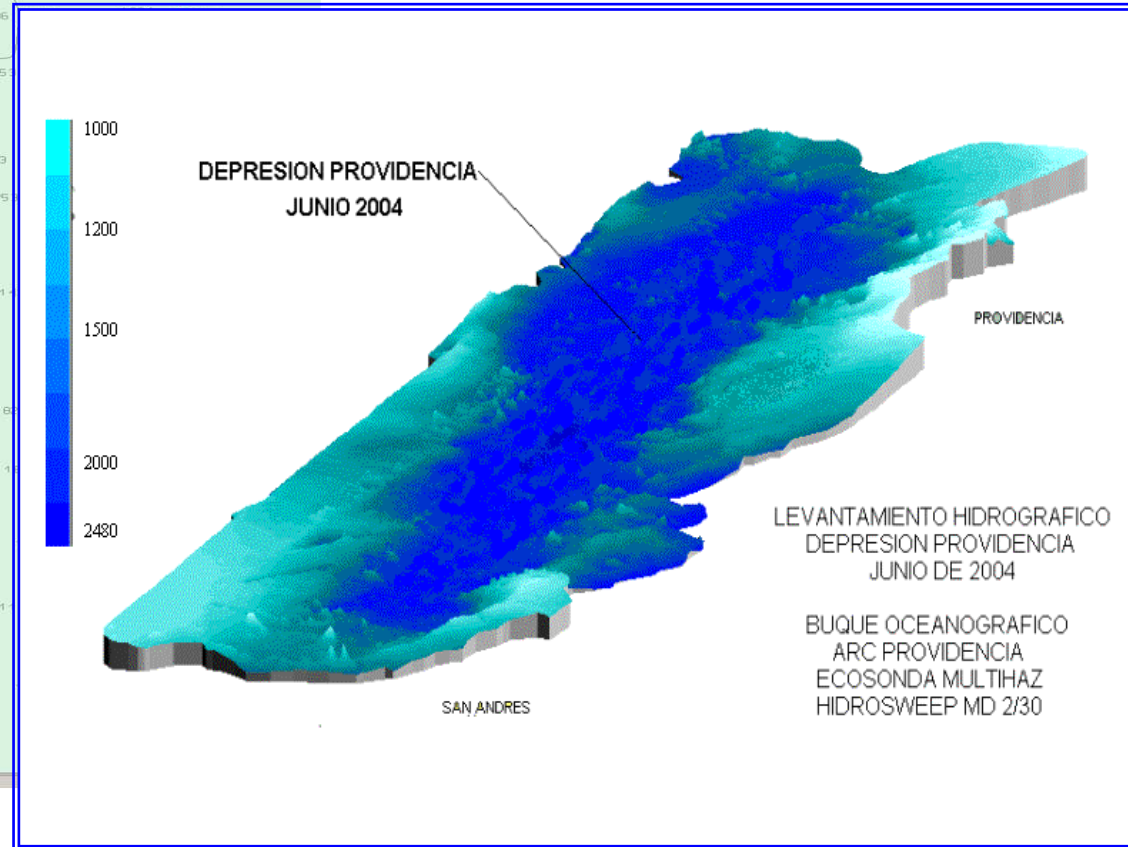
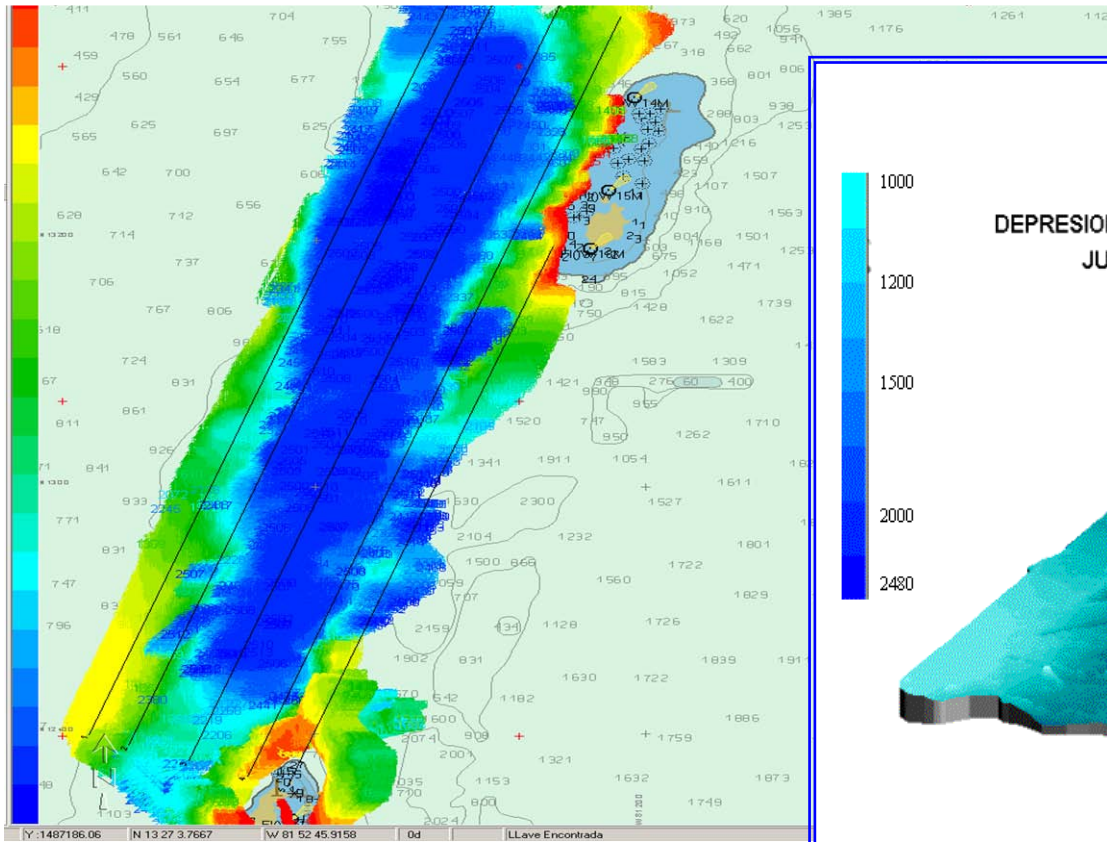
- General: 2D View, 3D View
- Colour Map: Rainbow.cma
- Minimum: 16.803
- Maximum: 25.058
- Number of soundings: 47851
- Memory used by subset: 6.36 (MB)
- Rejected: 2472 (5.17%)
- Accepted: 45379 (94.83%)
- Width: 92
- Height: 70
- Min. Depth: 16.80
- Max. Depth: 25.06

The main window displays a bathymetric chart with depth contours and a grid overlay. The chart is titled "CARIS Field Sheet Editor - [HIPSTraining.fsh:View1]". The interface includes a menu bar (File, Edit, View, Tools, Select, Window, Help), a toolbar, and a status bar at the bottom showing coordinates (1:812, 43-04-28.06N, 070-43-35.80W).



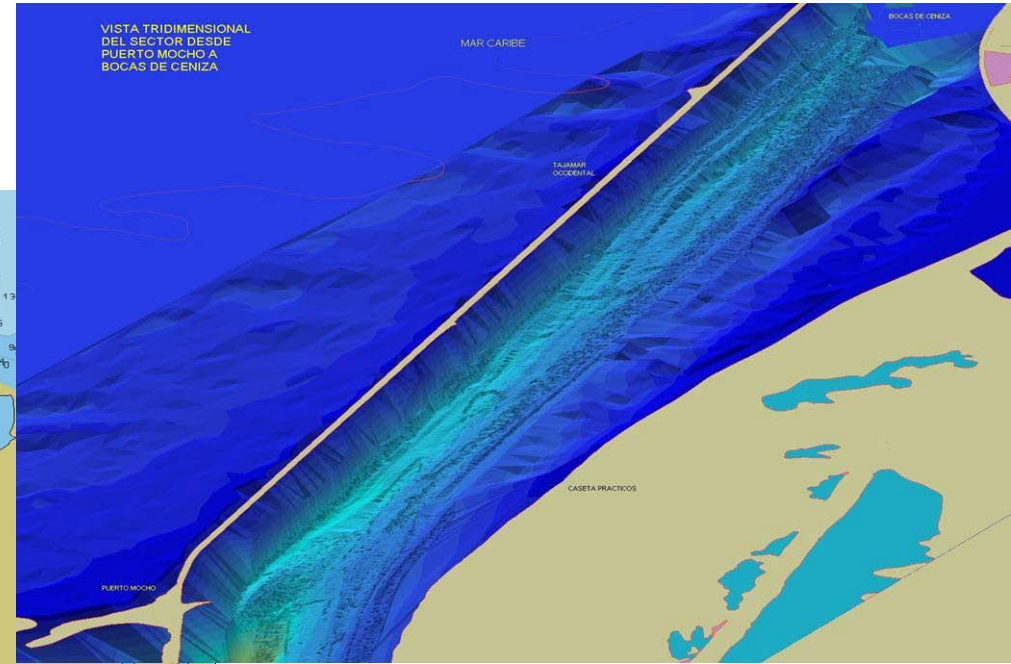
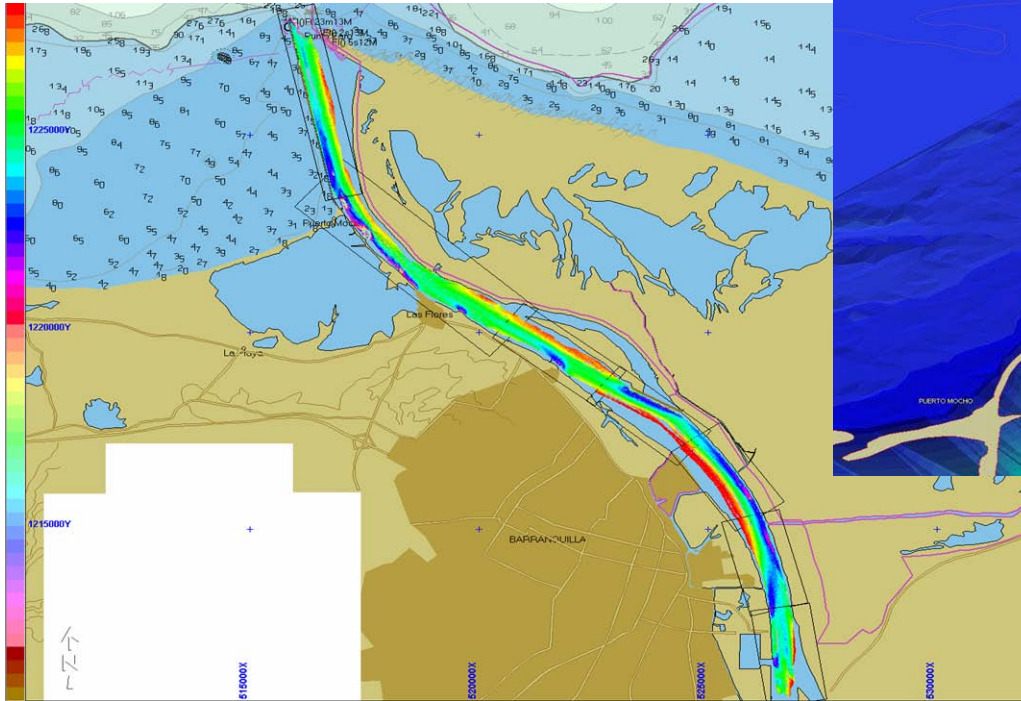


# INTERNATIONAL BATHYMETRIC CHART OF THE CARRIBBEAN SEA AND THE GULF OF MEXICO



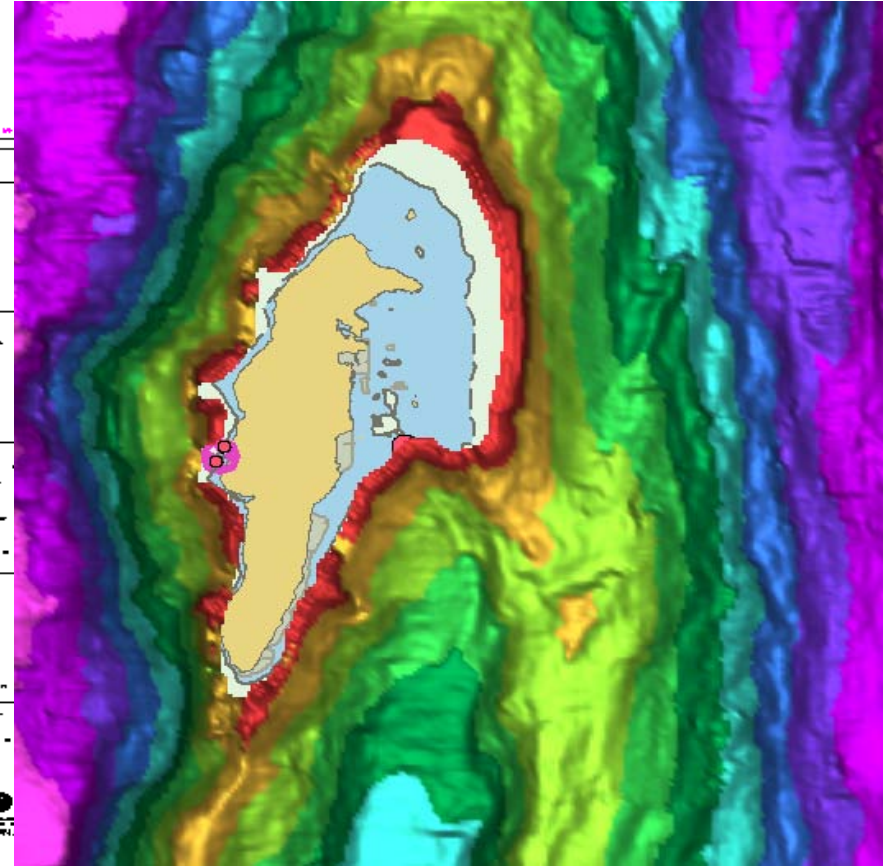
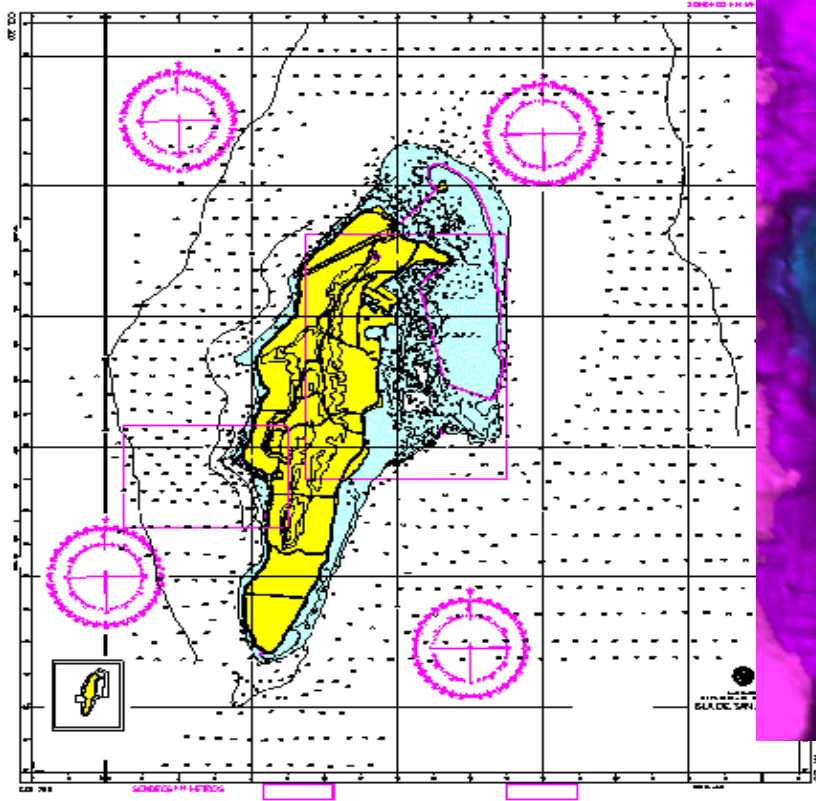


# INTERNATIONAL BATHYMETRIC CHART OF THE CARRIBBEAN SEA AND THE GULF OF MEXICO





# INTERNATIONAL BATHYMETRIC CHART OF THE CARRIBBEAN SEA AND THE GULF OF MEXICO





# INTERNATIONAL BATHYMETRIC CHART OF THE CARRIBBEAN SEA AND THE GULF OF MEXICO

