

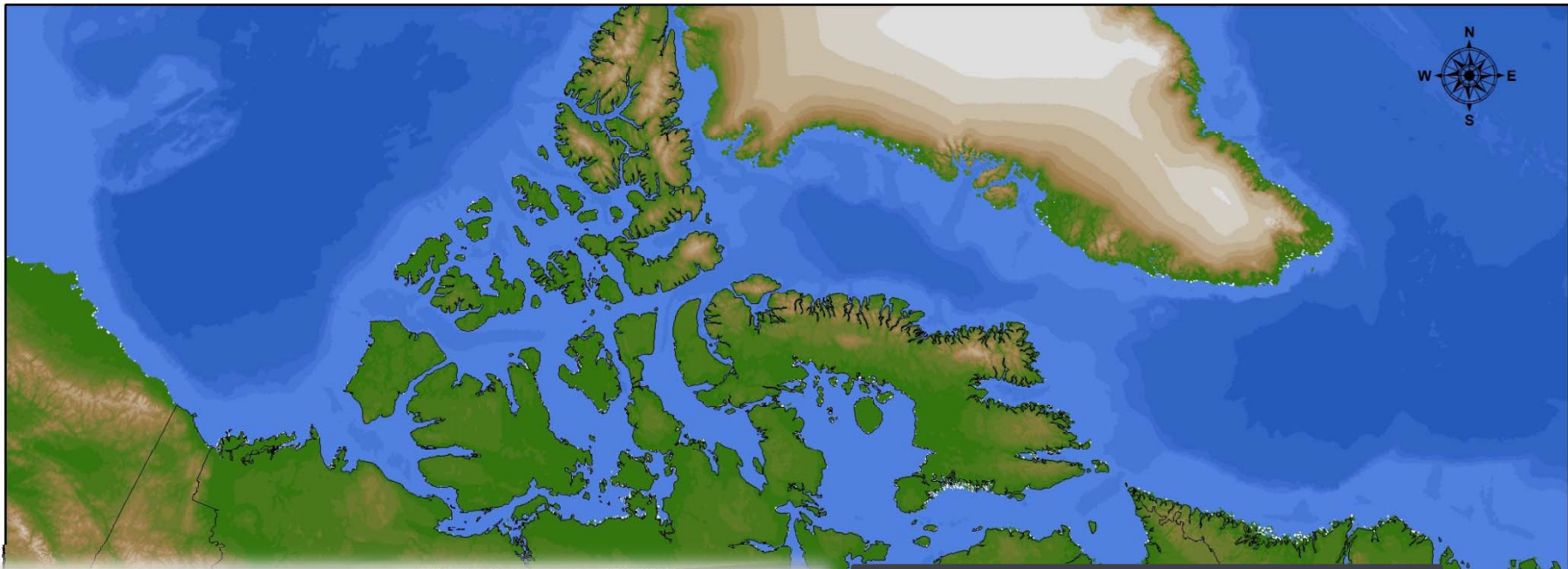
Mapping within the Canadian Arctic Archipelago



Ian Church¹, John Hughes Clarke¹, Doug Cartwright¹,
Steve Brucker¹, James Muggah¹, and Steve Blasco²

¹Ocean Mapping Group, University of New Brunswick, Fredericton, NB, Canada

²Geological Survey of Canada, Dartmouth, NS, Canada



Ocean Mapping Group

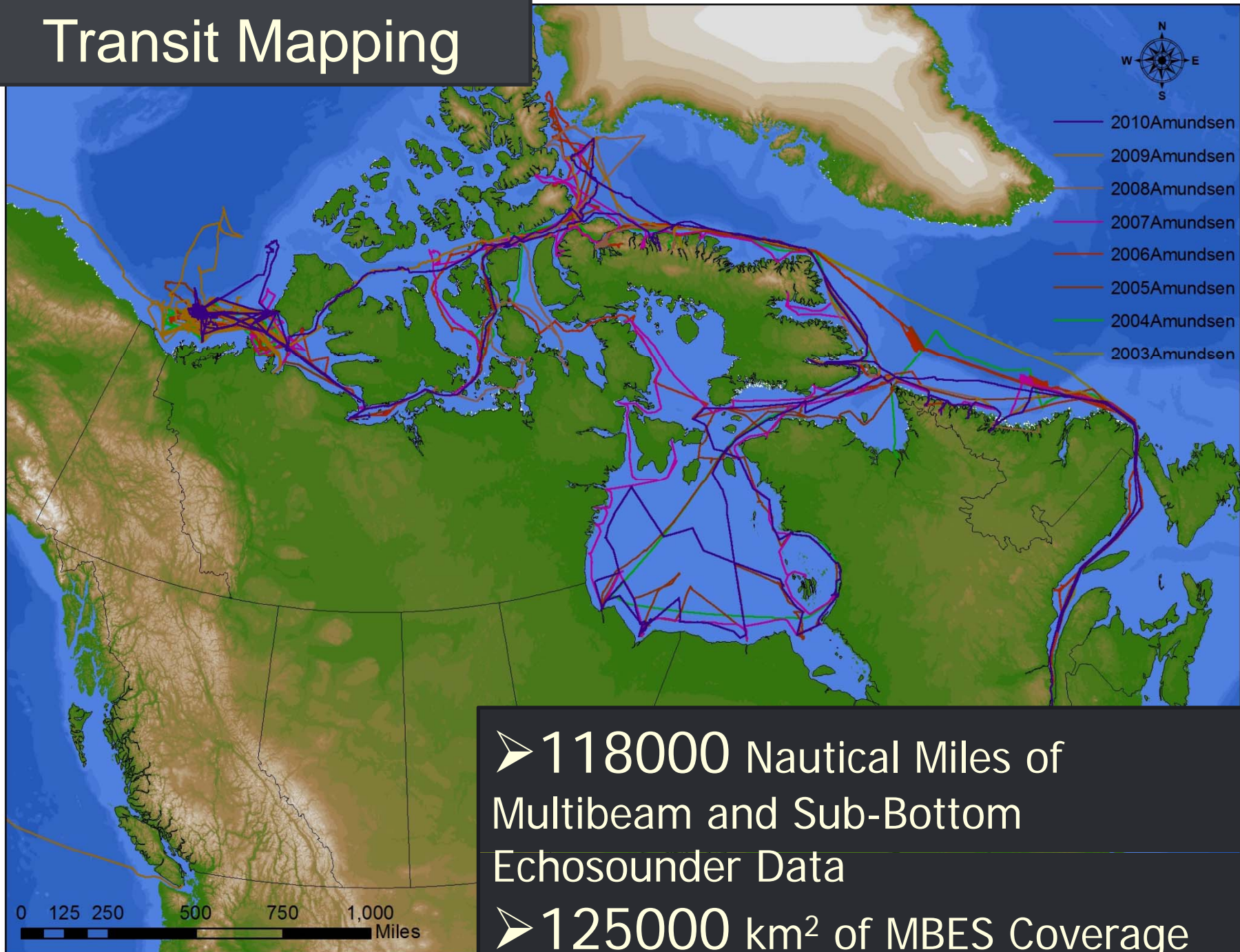


University of New Brunswick
CANADA

CCGS Amundsen
Since 2003

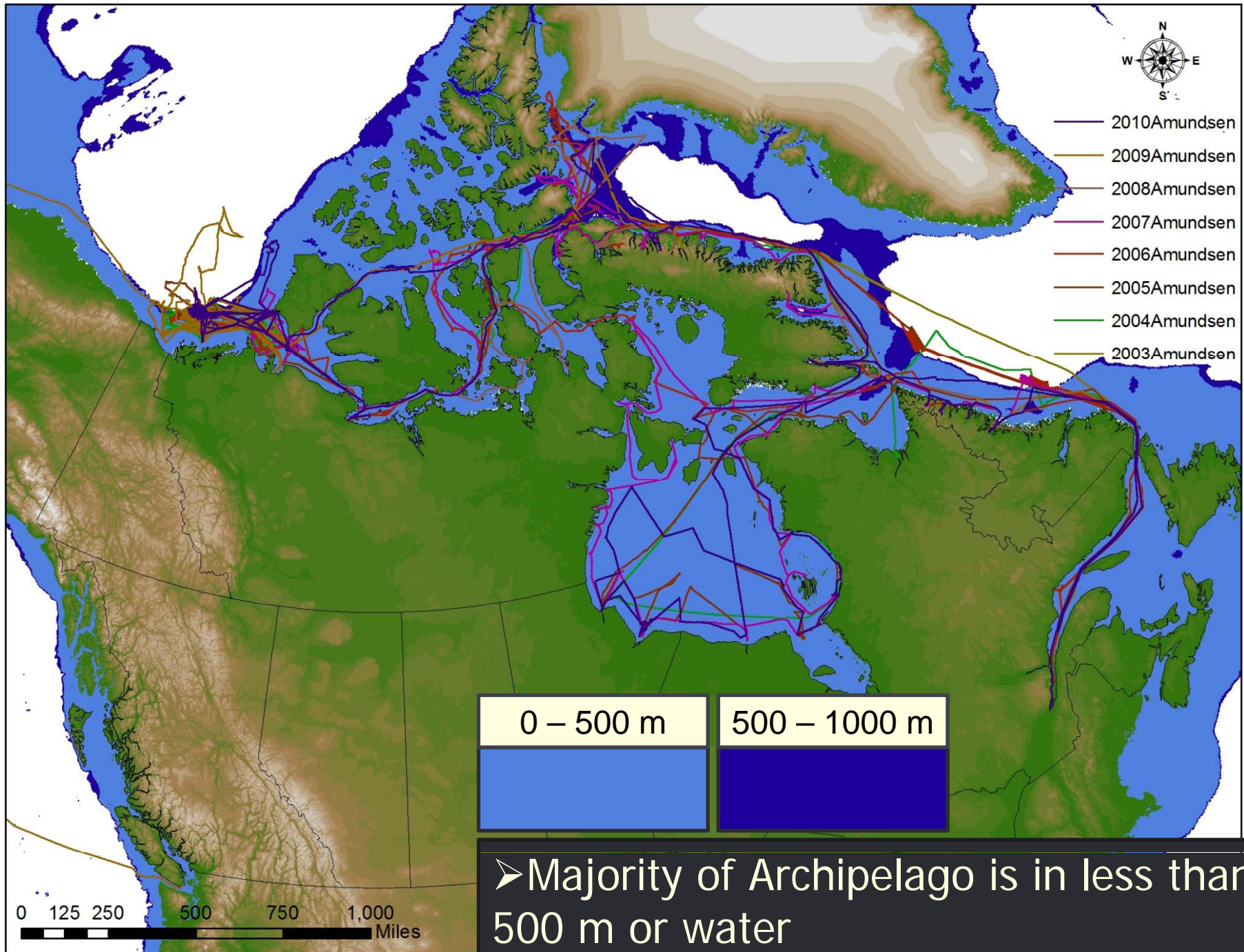
EM302 Multibeam and K320R Sub-Bottom
24 hours a day
4 months a year

Transit Mapping



➤ 118000 Nautical Miles of
Multibeam and Sub-Bottom
Echosounder Data

➤ 125000 km² of MBES Coverage



0 – 500 m

500 – 1000 m

➤ Majority of Archipelago is in less than 500 m or water

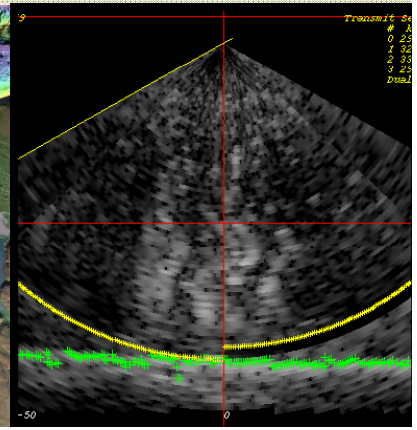
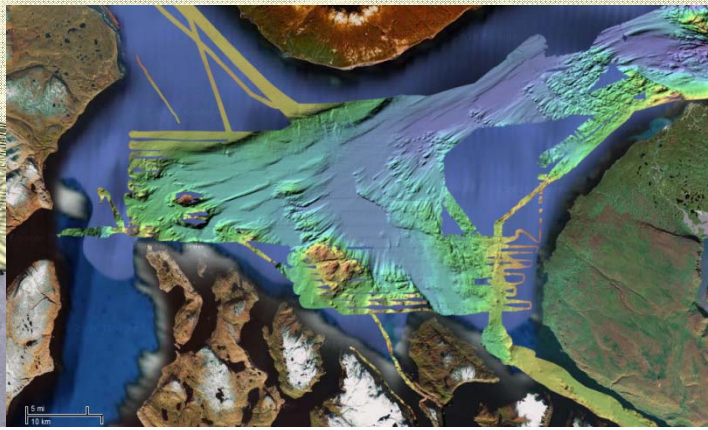
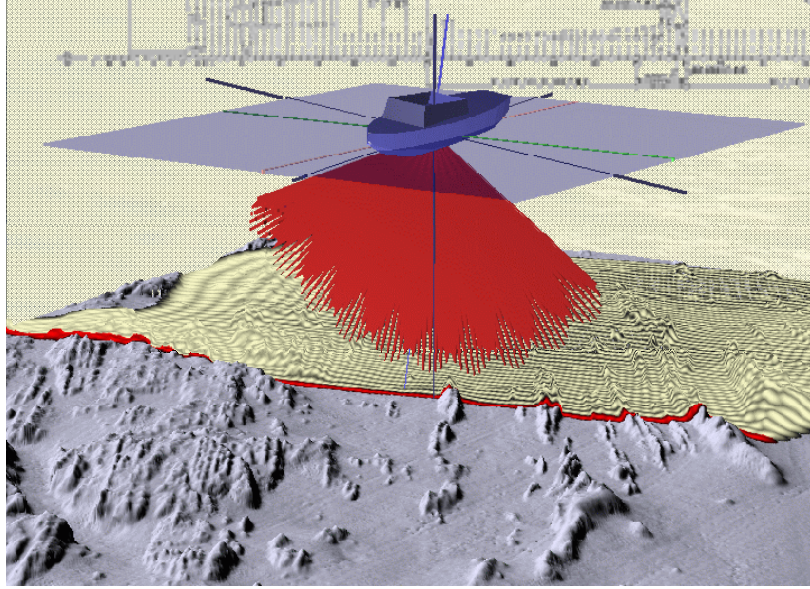
CCGS Amundsen

Since 2003

- EM302 (30kHz) with Watercolumn Imaging

- EM302 Multibeam
- K320BR Sub-bottom
- POSMv 320 IMU
- CNav & POSMv Antennas
- MVP-300
- Acquisition Room

7m



Amundsen and Launches

a complimentary pair for Mapping the Arctic Archipelago

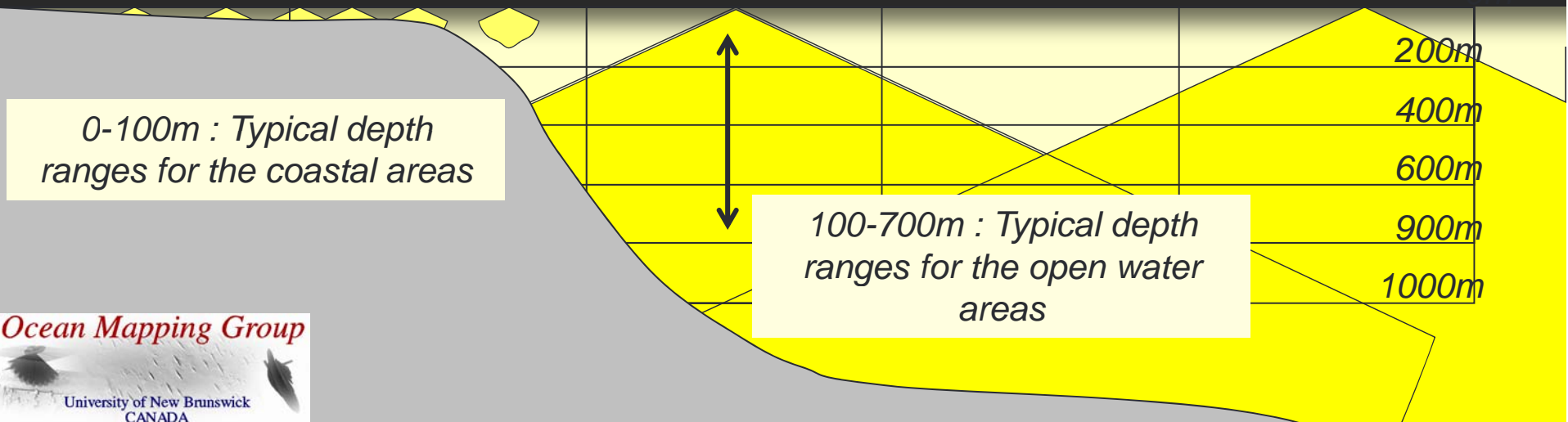


Barge or Heron

- EM3002 – 300 kHz
- Depth/Width: 3-160m – 4xWD
- Draft: 0.6 m

CCGS Amundsen

- EM302- 30 kHz
- Depth/Width: 30-3000m- 4xWD
- Draft 7.0m



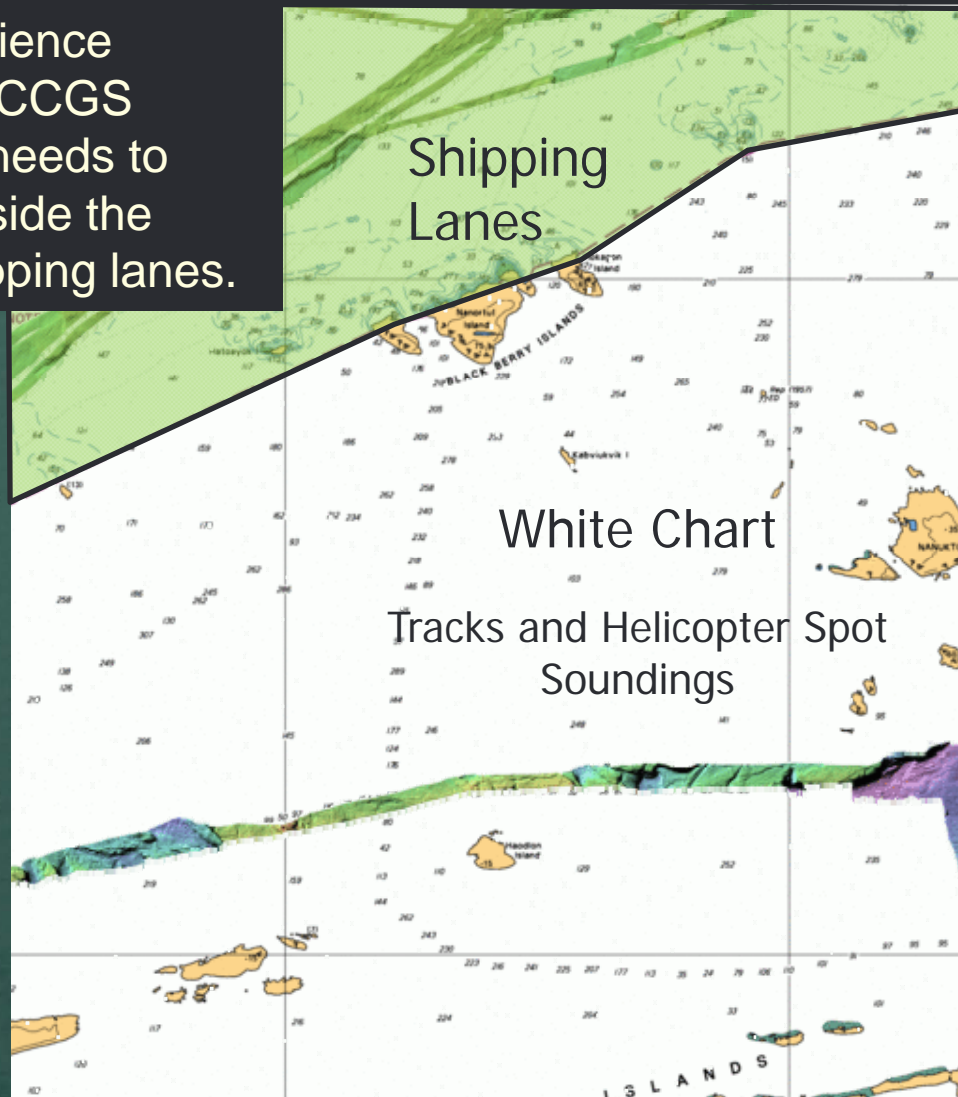
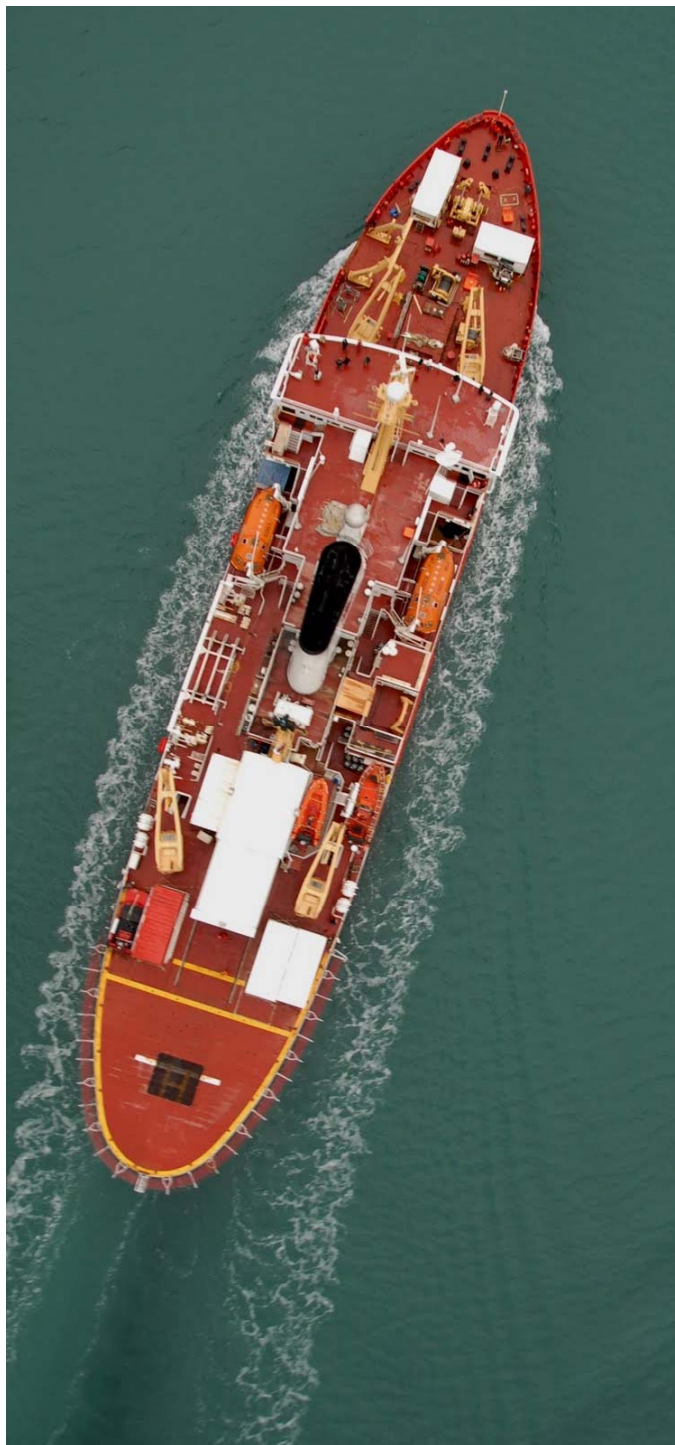
Navigating Sparsely Charted Arctic Waters

ArcticNet science
program → CCGS
Amundsen needs to
operate outside the
existing shipping lanes.

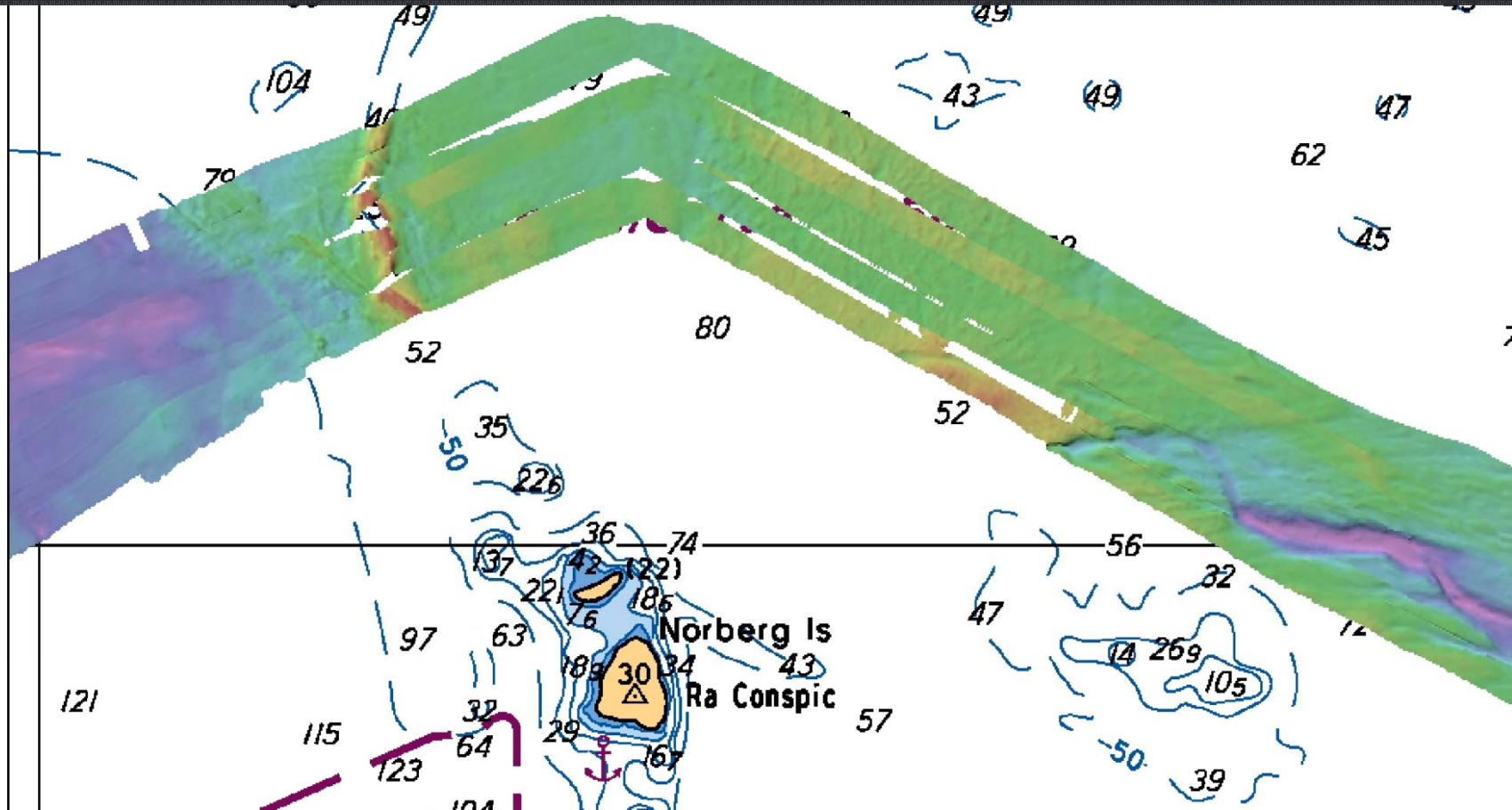
Shipping
Lanes

White Chart

Tracks and Helicopter Spot
Soundings



Transit Mapping



2003

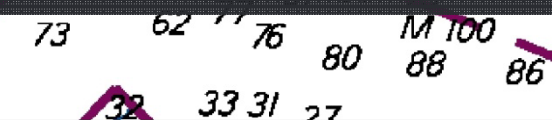
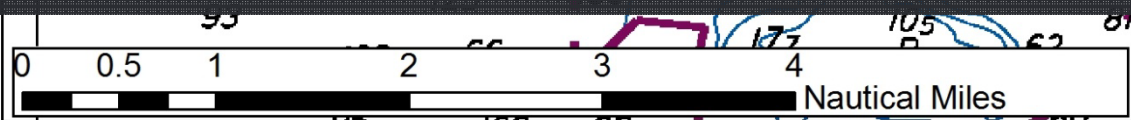
2004

2005

2006

2007

2008



2003

2004

2005

2006

2007

2008

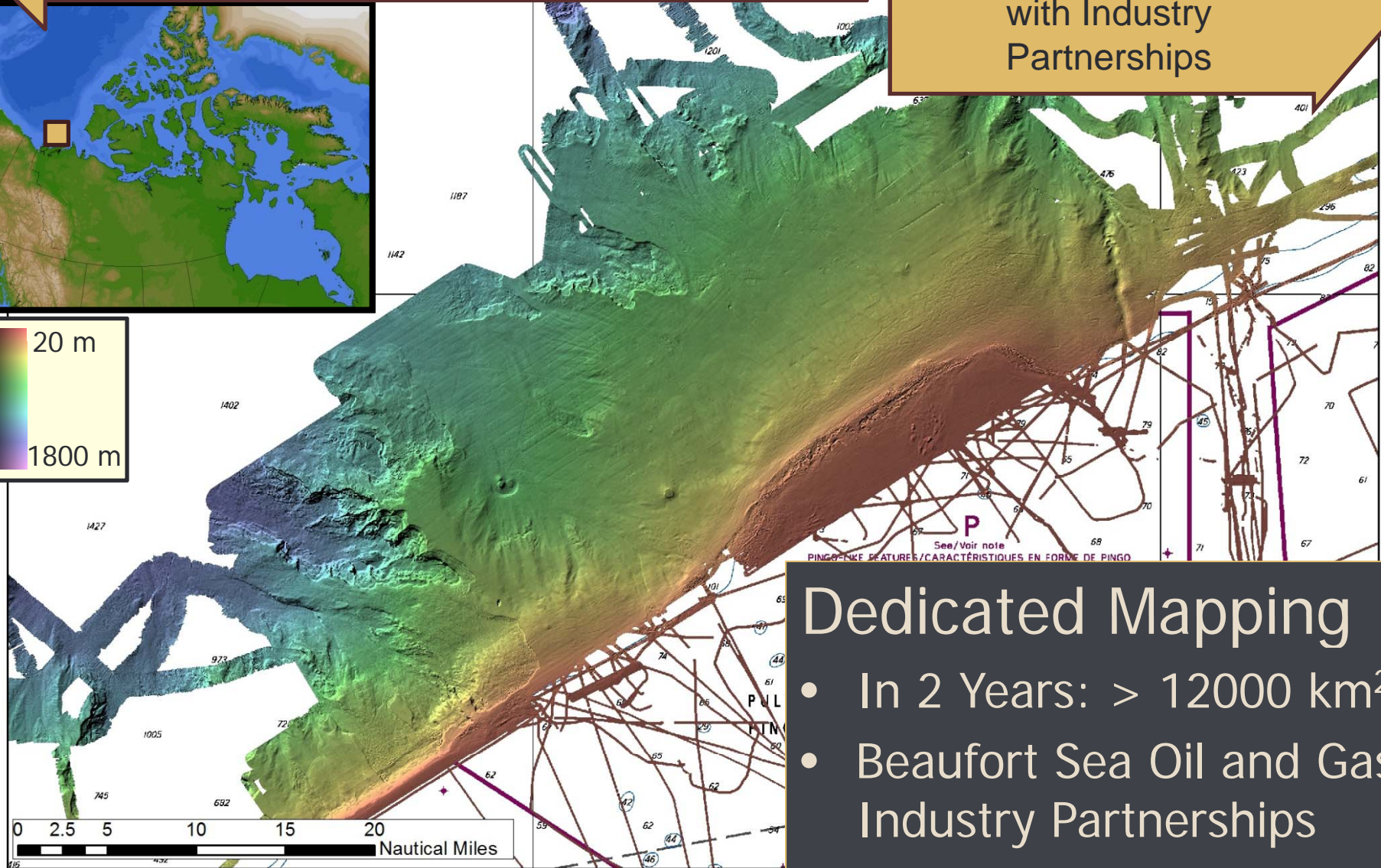
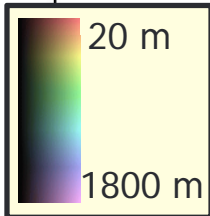
2009

2010

2011

Mapping limited to 48 hours or less

Large Scale Mapping
with Industry
Partnerships

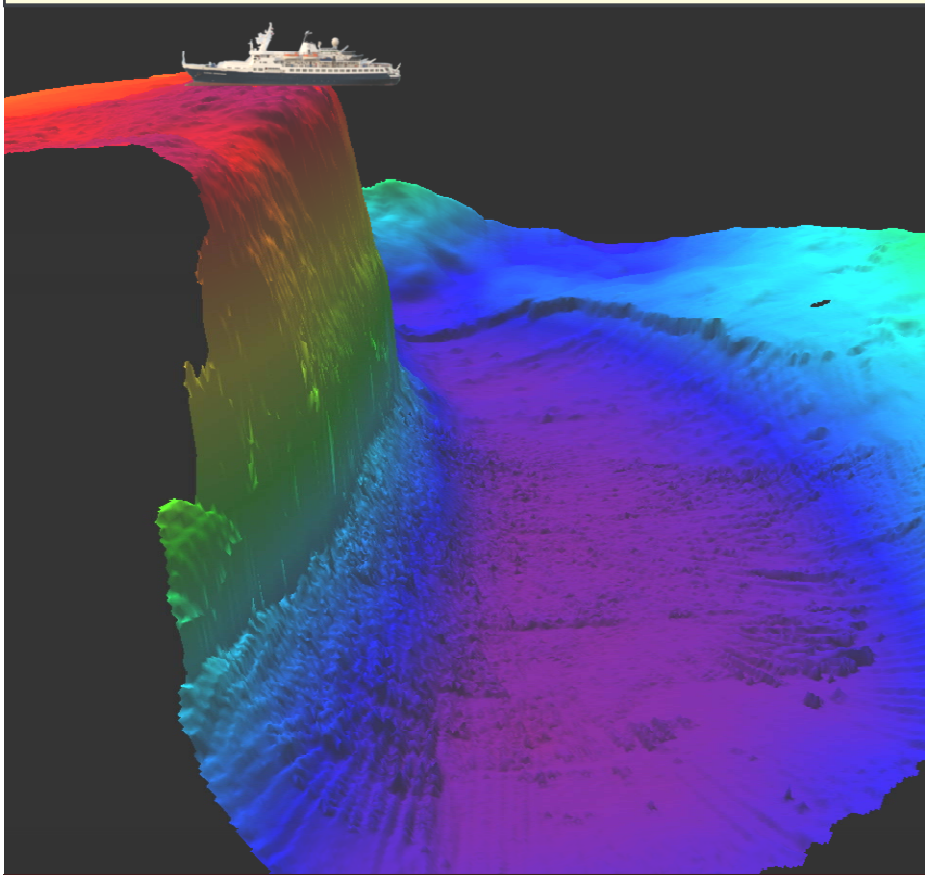


Dedicated Mapping

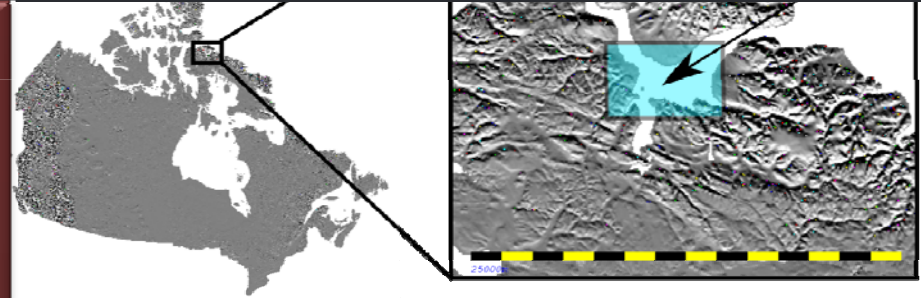
- In 2 Years: > 12000 km²
- Beaufort Sea Oil and Gas Industry Partnerships

Collecting Data 24 Hours a day with the Canadian Coast Guard

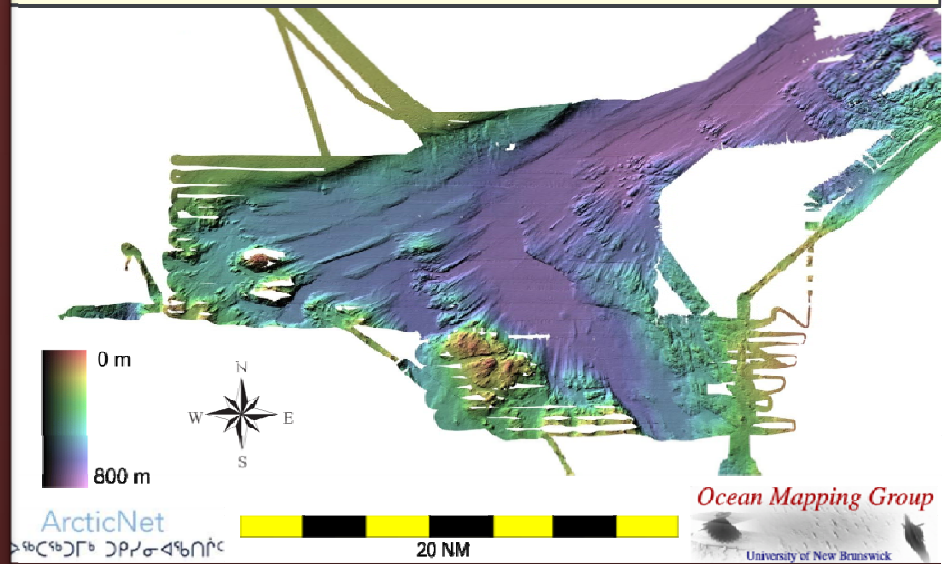
1 *Clipper Adventurer* Cruise Ship Rescue



Result: Mapping Uncharted Areas & Improved Safety of Navigation



2 Eclipse Sound Search and Rescue



Result: Improved Geological understanding of Eclipse Sound

Ocean Mapping Group

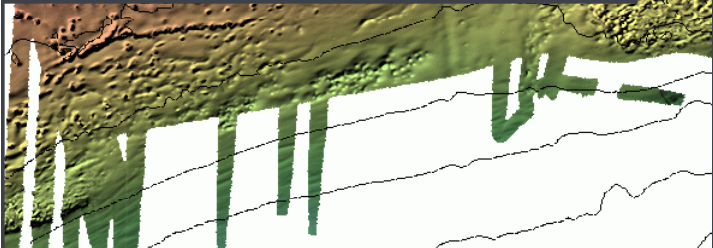
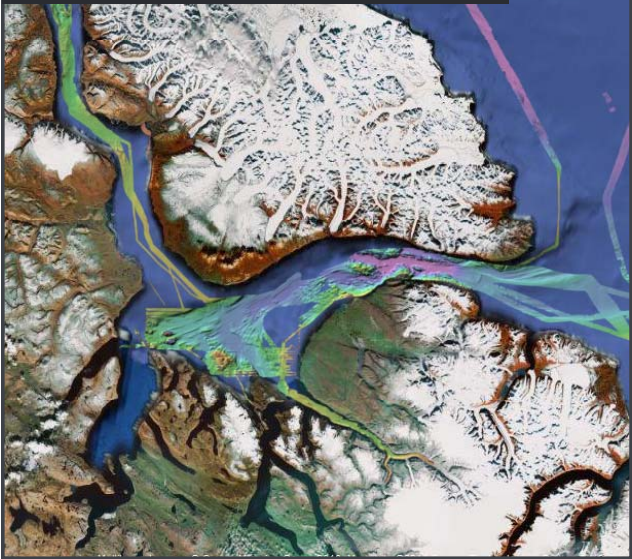


University of New Brunswick
CANADA

Collaboration

ArcticNet
ᐃᐅᐃᑦᑎᑦᑕᑦᑕᑦᑎᑦ ᑕᐅᑭᑦᑎᑦᑕᑦᑎᑦ

Sirmilik National Park



CCGS Henry Larsen



CCGS Nahidik



bp

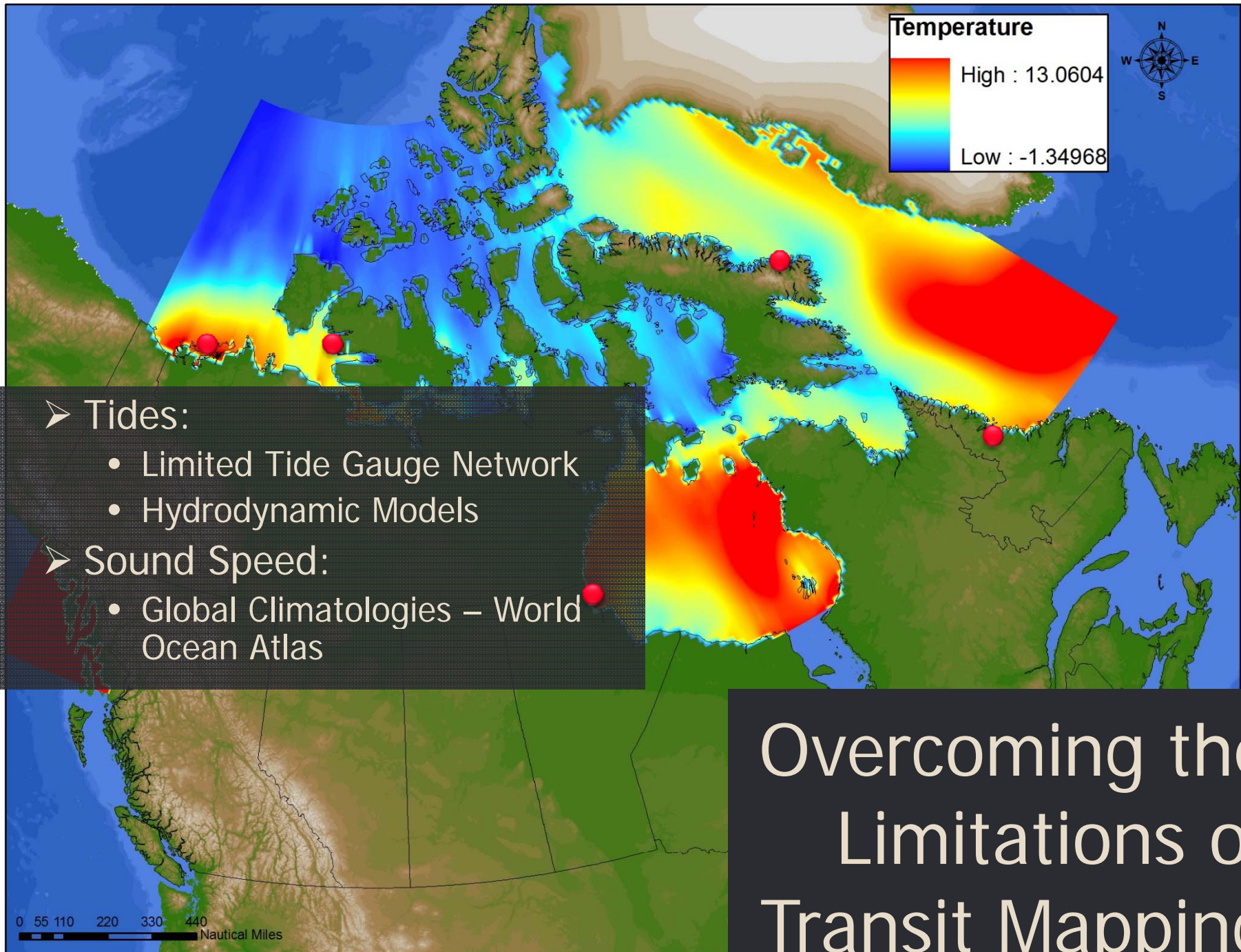
Esso Imperial Oil

CANADA
GARDIENNE ET PROTECTRICE
DU SERVICE - PROTECTRICE DU SERVICE

CANADA
1842
GEOLOGICAL SURVEY - COMMISSION GEOLOGIQUE

Parks Canada / Parcs Canada

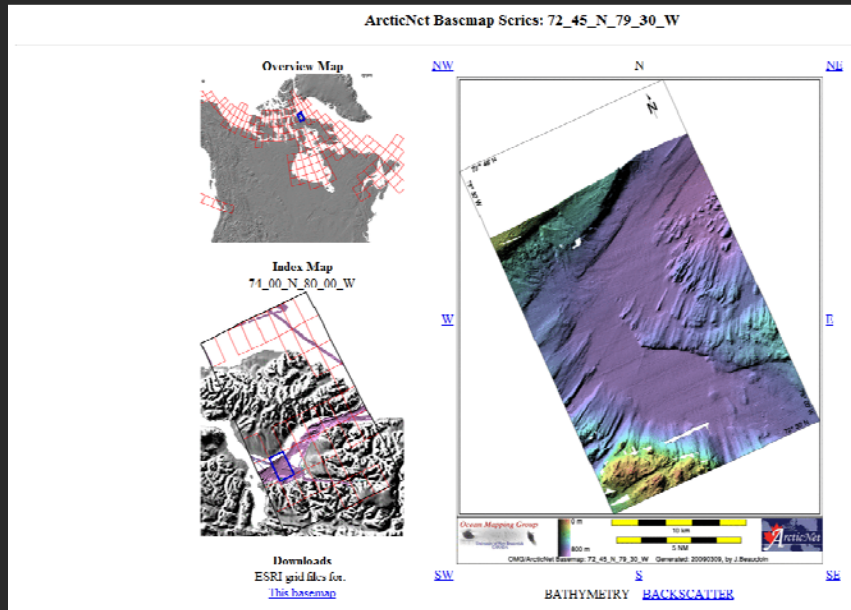
CANADA



Overcoming the Limitations of Transit Mapping

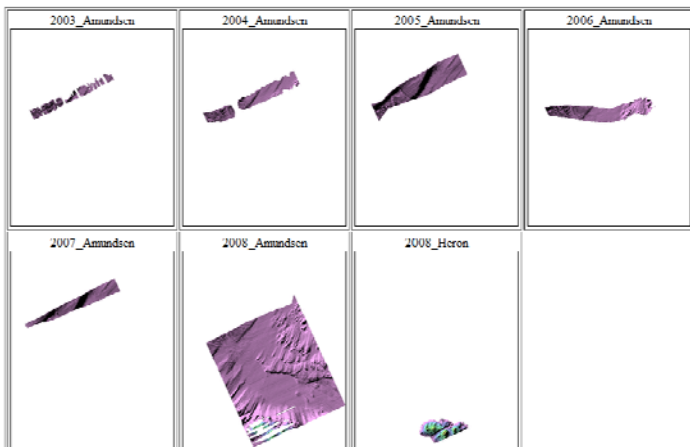
Distribution

- Basemaps
 - Compilation of all years
 - Source Data for Each Year
- Stripmaps
 - Observe Temporal Changes
 - Sub-Bottom + Bathymetry



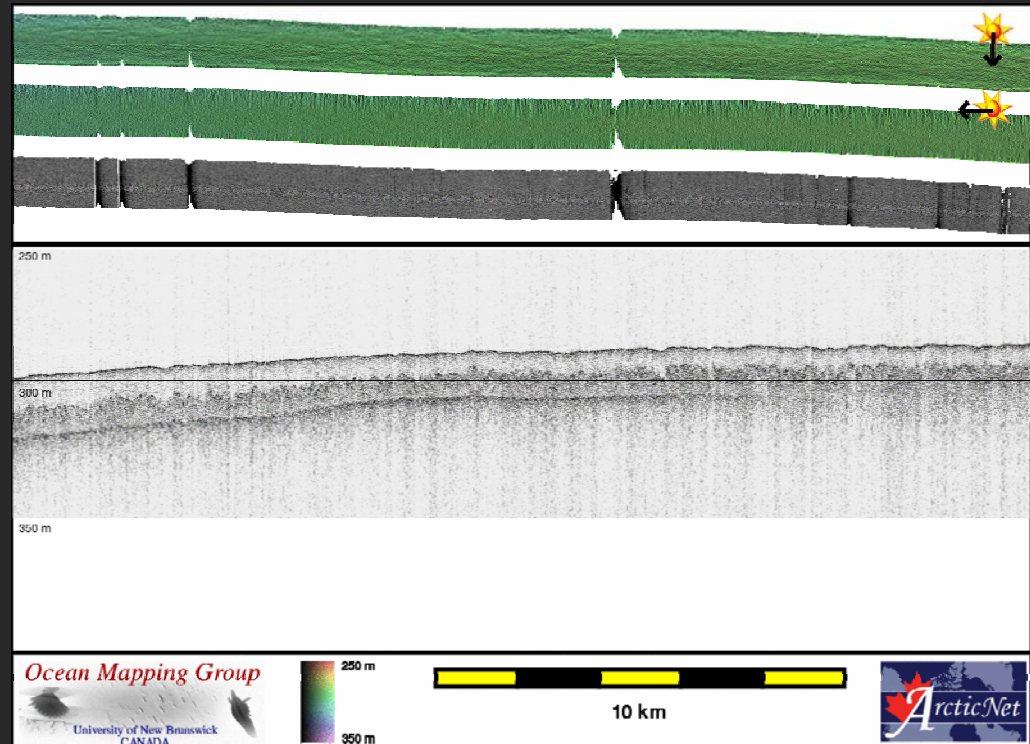
[Home...](#)

Source data



Survey Lines for each area

Feb 27 17:44:09 AUT 2008 Making combo map
Data from source: 2000 Amundsen



Future Distribution

- Where we're going
 - Incorporating Other Layers in WebGIS
 - Sub-Bottom
 - CTD Observations
 - Hydrodynamic Model Output
 - Improved metadata
 - Automated Generation and Multiple Levels
 - Automated server side map generation
 - WebGIS PHP interface to Unix MBES Processing



Questions?



ArcticNet

ᐃᐱᐃᖅᓕᖅᓂᐱᖅ ᓂᐱᓂᐱᖅᓂᐱᖅ

Ocean Mapping Group

University of New Brunswick
CANADA