



GEOLOGICAL INSTITUTE RAS
Laboratory of Ocean Floor Geomorphology and Tectonics



Arctic cruises
of R/V “Akademik Nikolaj Strakhov”
2006-2010

Yulia Zarayskaya



**80 anniversary of GIN
1930 - 2010**

www.ginras.ru

R/V “Akademik Nikolaj Strakhov”

REG No: 830662

DISPLACEMENT: 2600 T

LENGTH: 75,5 M

BREADHT: 14,7 M

DEADWEIGHT: 860 T

DRAFT: 4,5 m

+ 1,5 m echosounder

SPEED: 13.0 /10.0 knots

CONSUMPTION:

450 T - gasoline

18 T-oilSAE40

150 T – fresh water

SELF-SUSTAINING PERIOD:

60 days



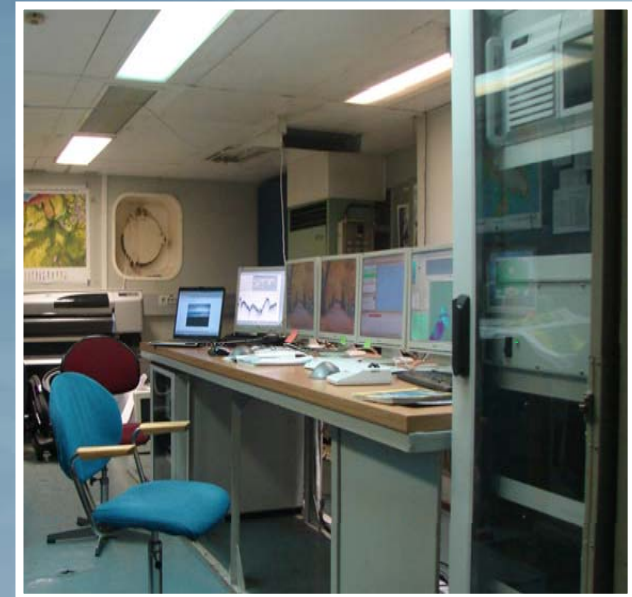
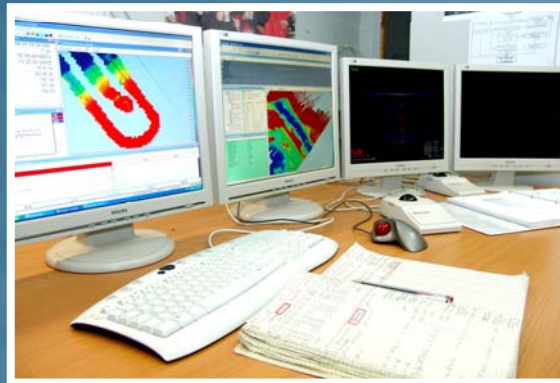
Mazarovich A.O.,

Deputy Director on Marine Investigations

E-mail: mazarovich@ginras.ru

Phone: +7 (495) 953-00-31

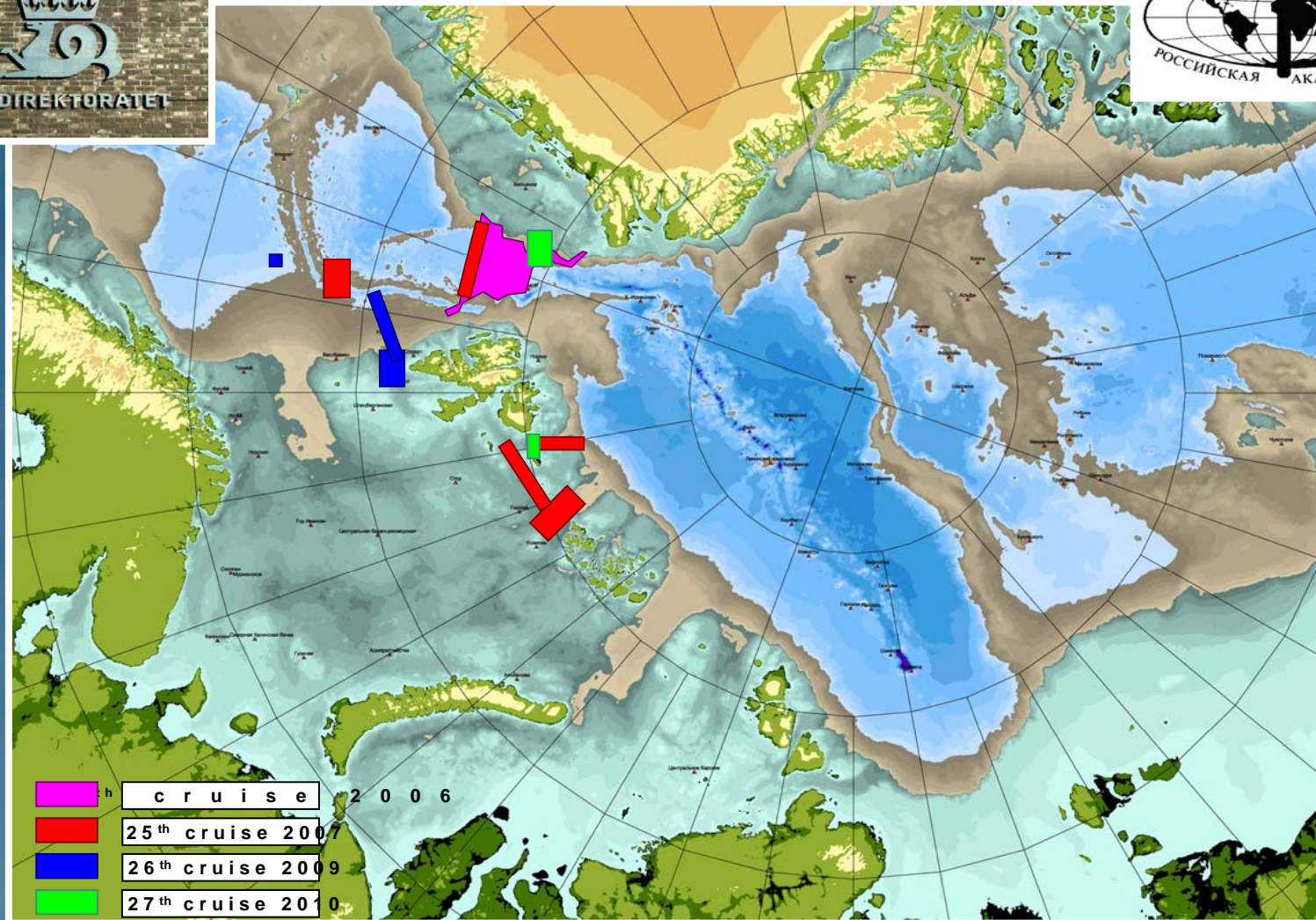
Equipment and Methods



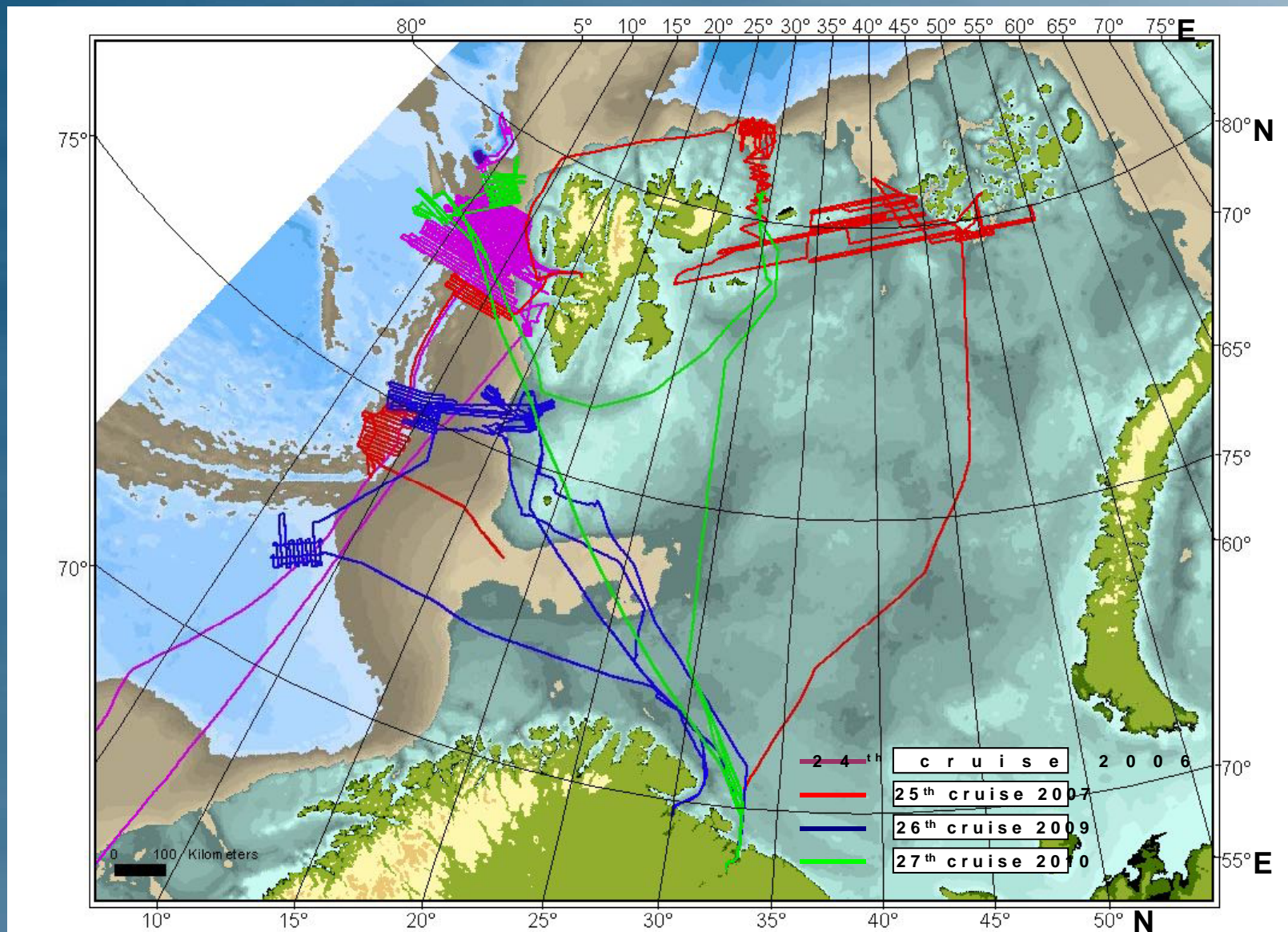
Multibeam echosounder
RESON SeaBat
EdgeTech 3300 sub-
bottom profiler
One-channel scismics
Bottom peaking



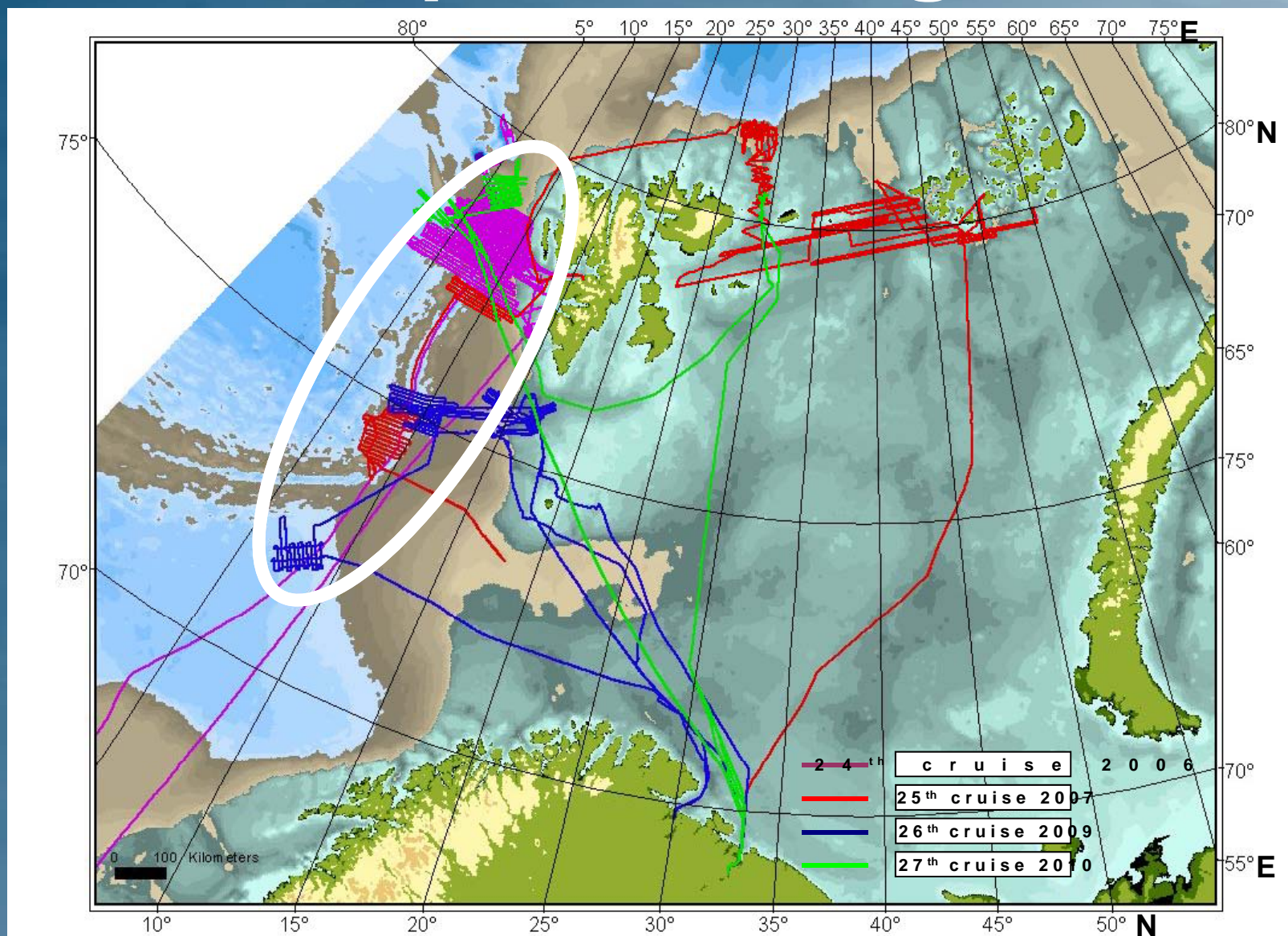
R/V 'Akademik Nikolaj Strakhov' 2006-2010 cruises



Tracklines

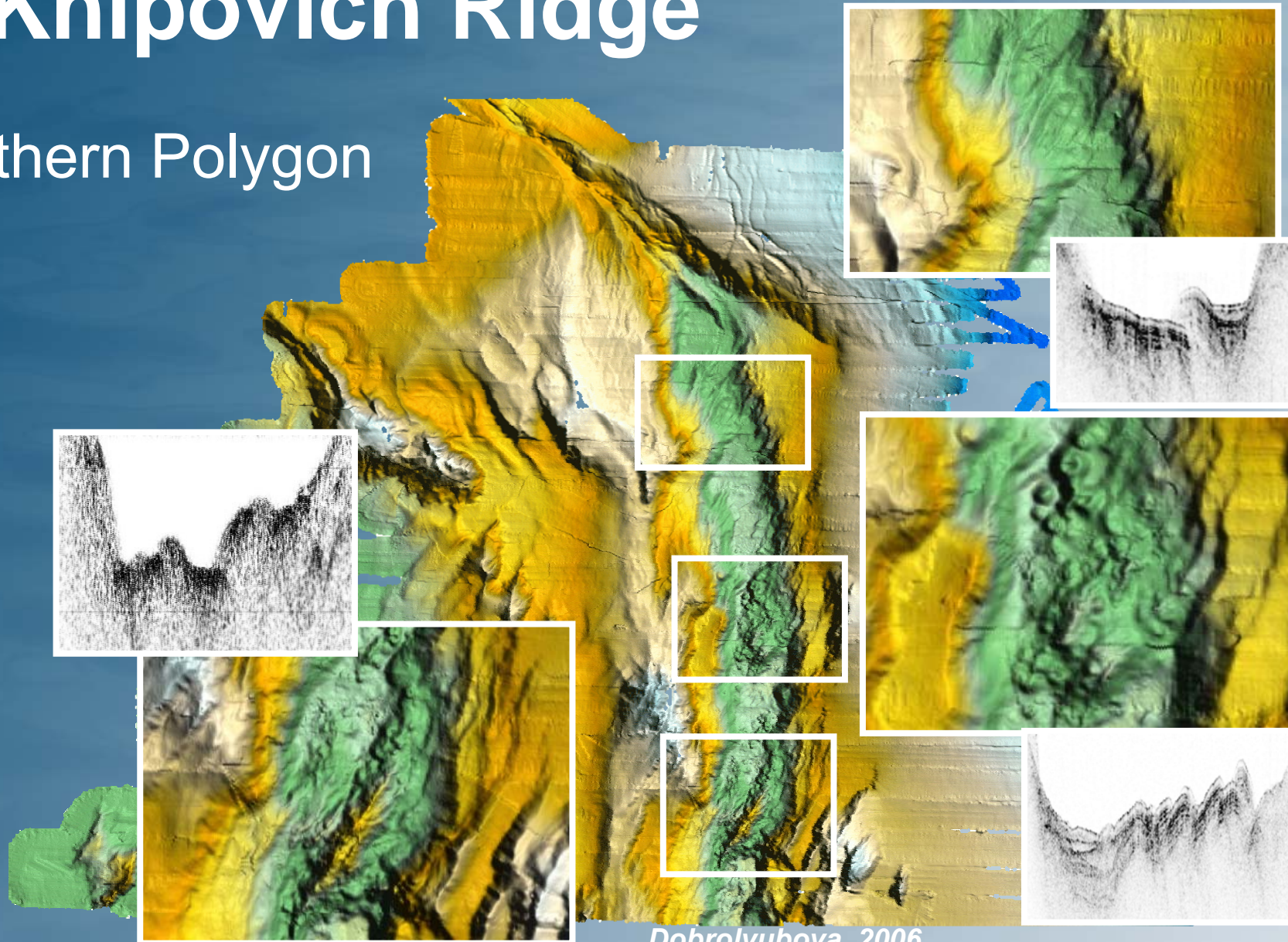


Knipovich Ridge



Knipovich Ridge

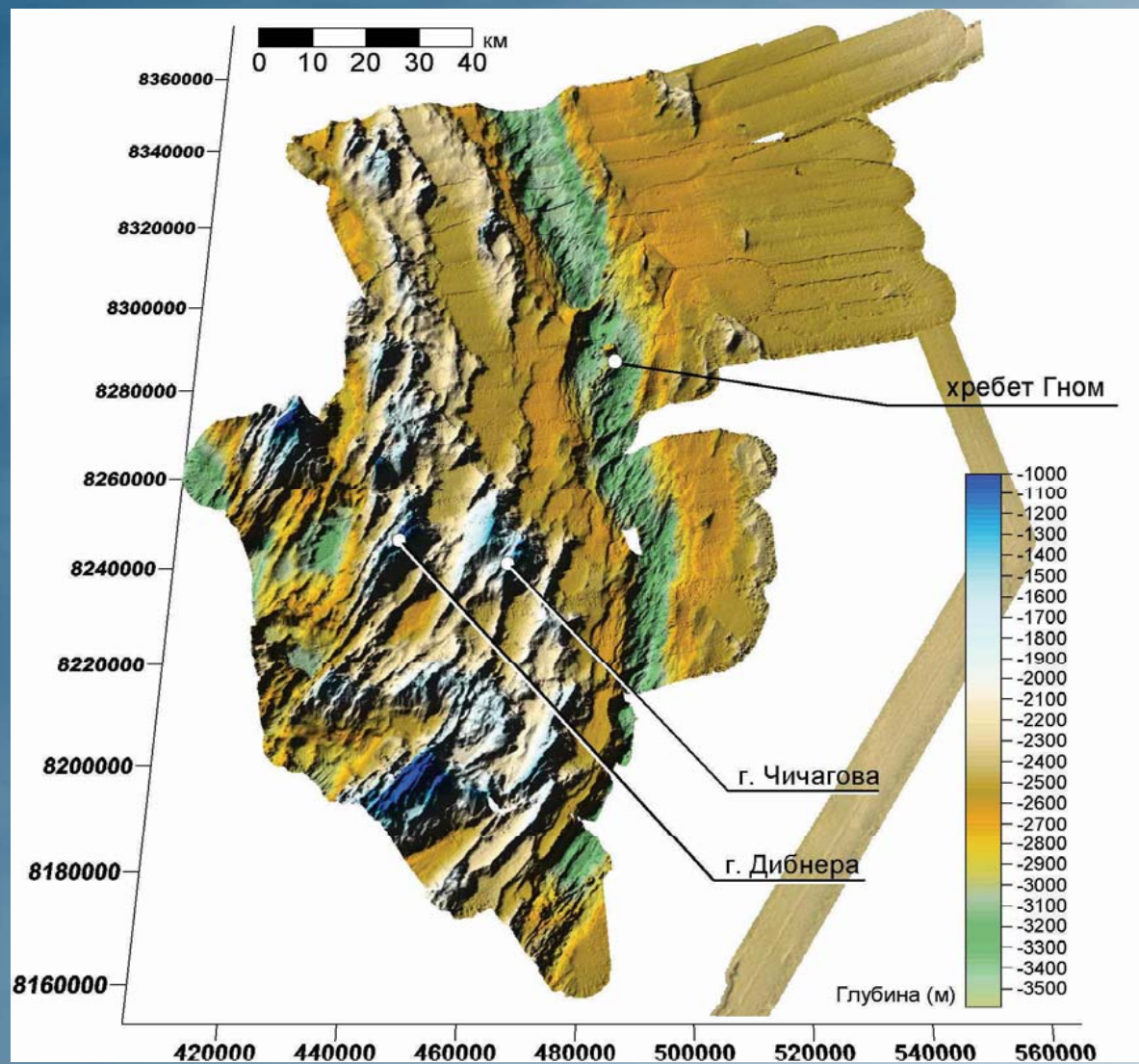
Northern Polygon



Dobrolyubova, 2006

Knipovich Ridge

Southern Polygon

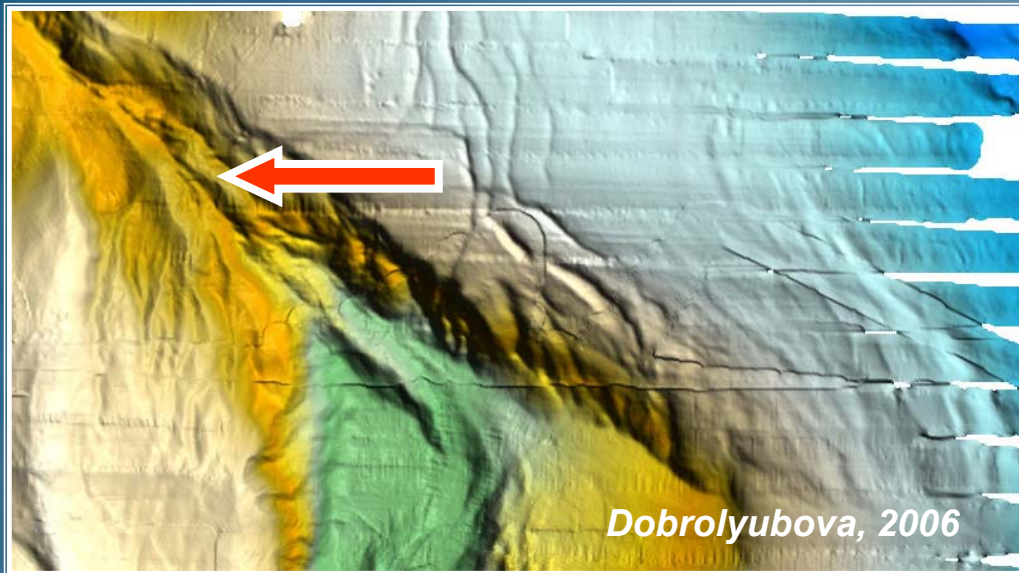


Dobrolyubova, 2006

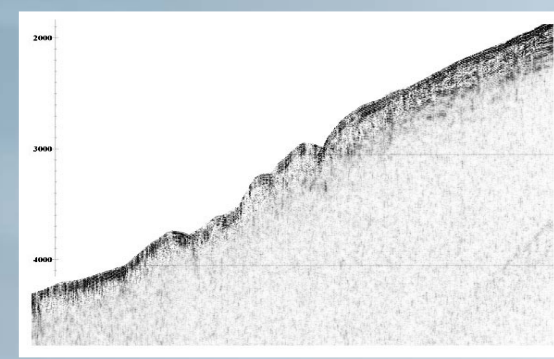
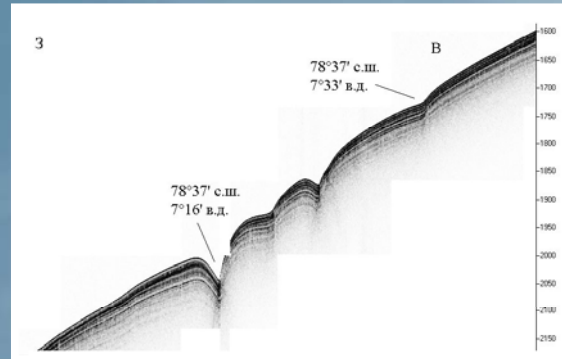
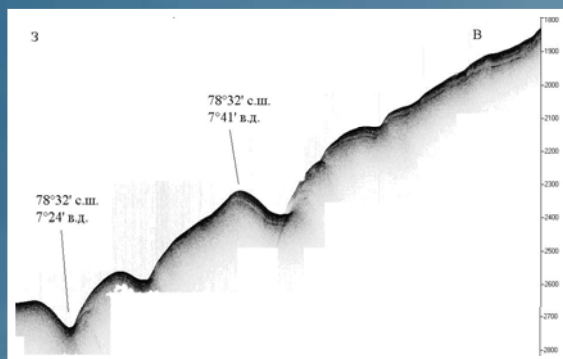
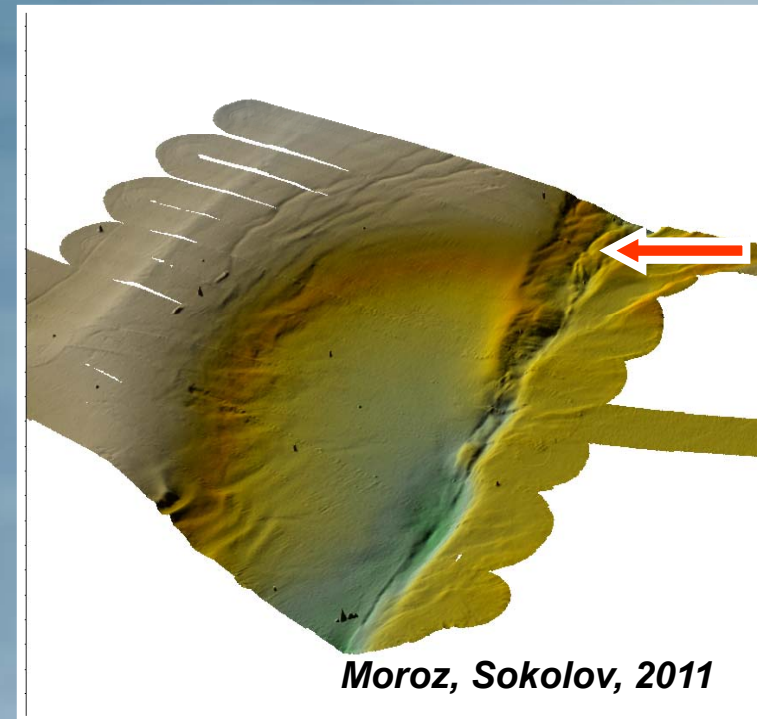


Molloy Fault

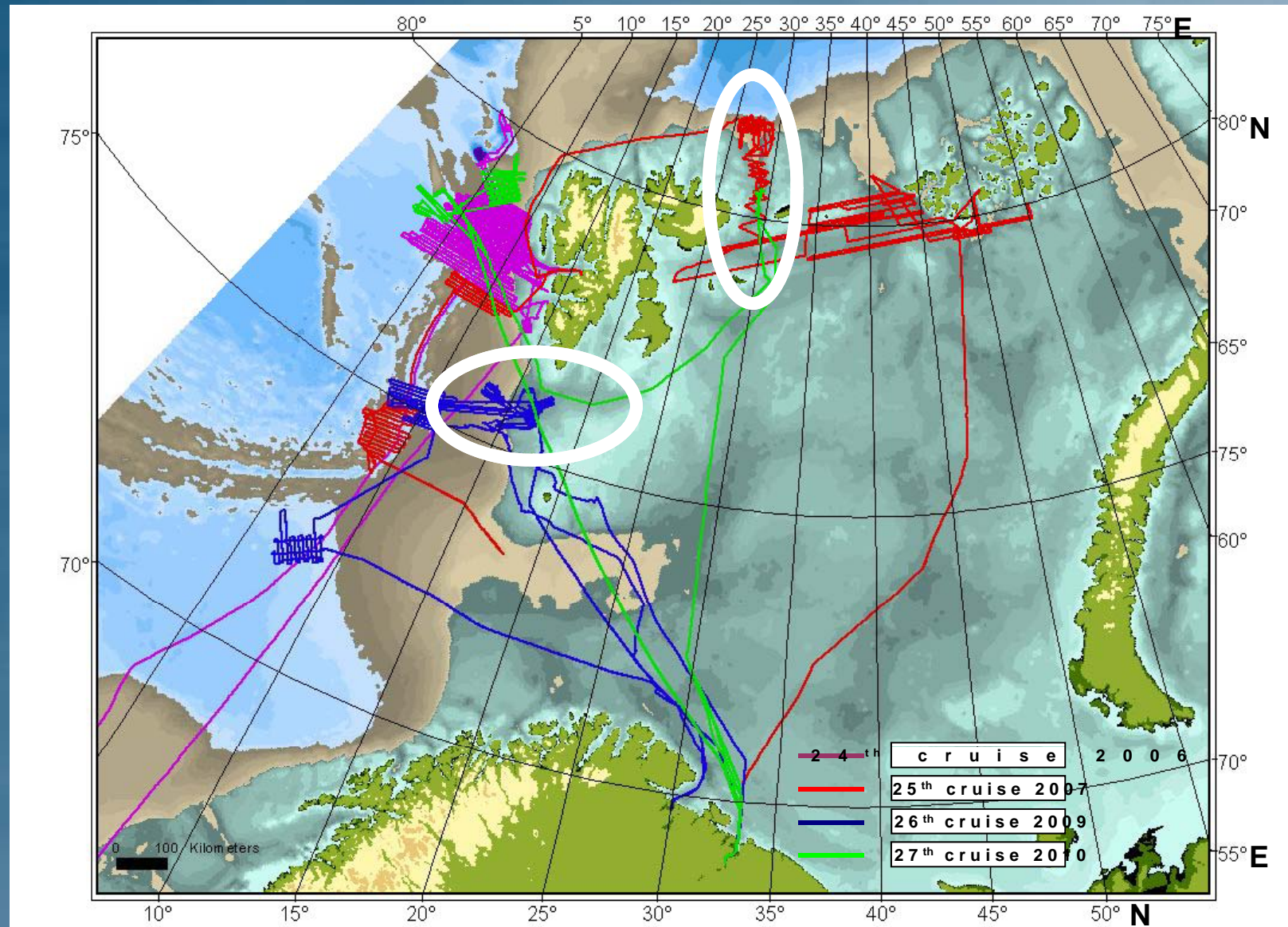
Molloy bathymetry
(view to the North) (2006)



Molloy bathymetry
(view from South-West) (2010)

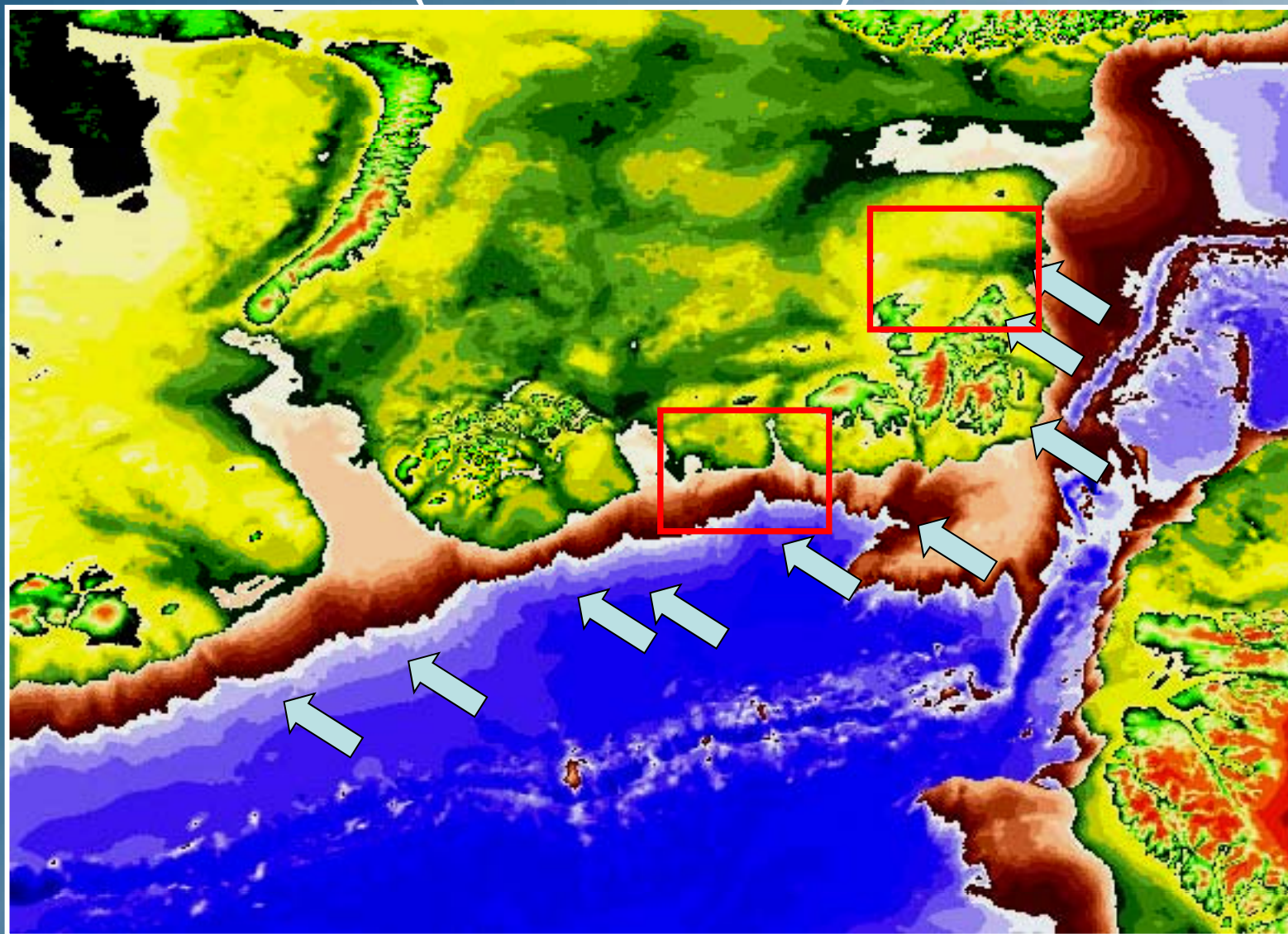


Troughs and Continental Slope

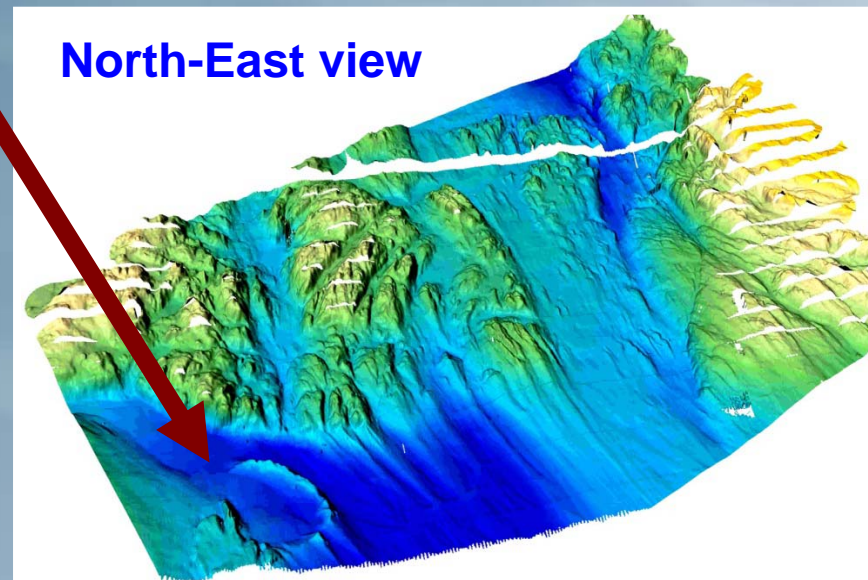
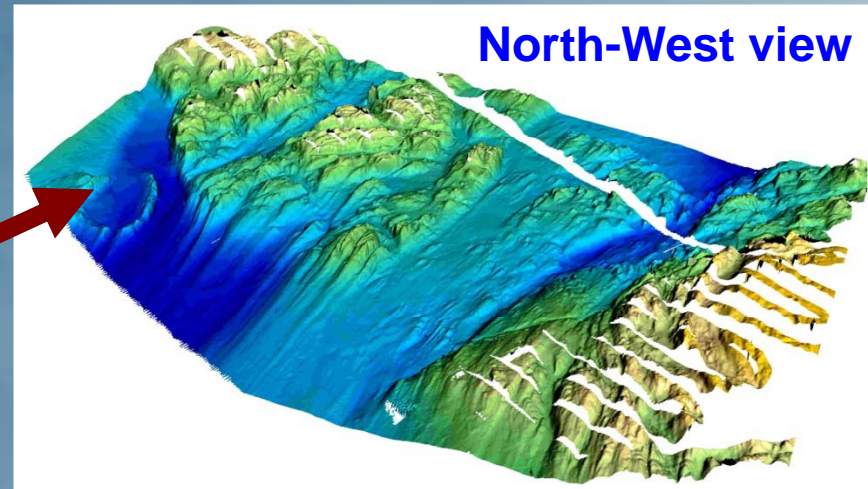
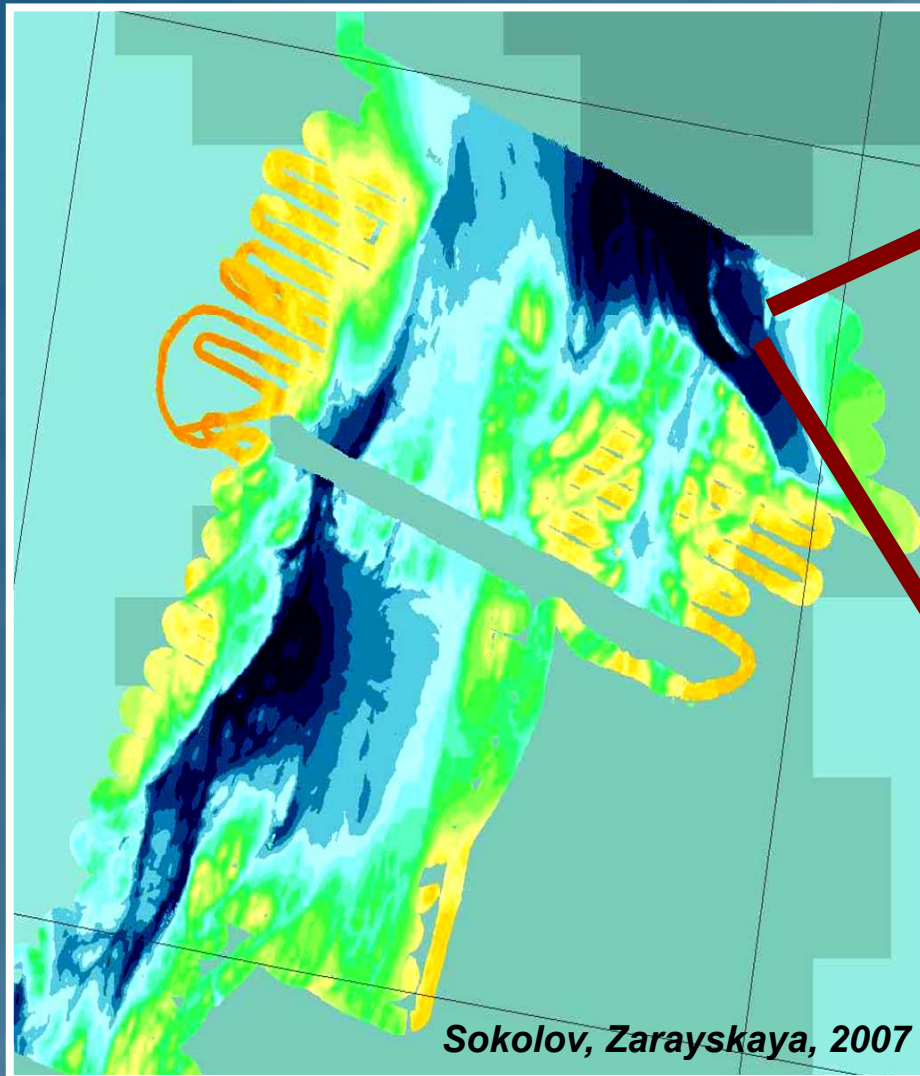


Troughs

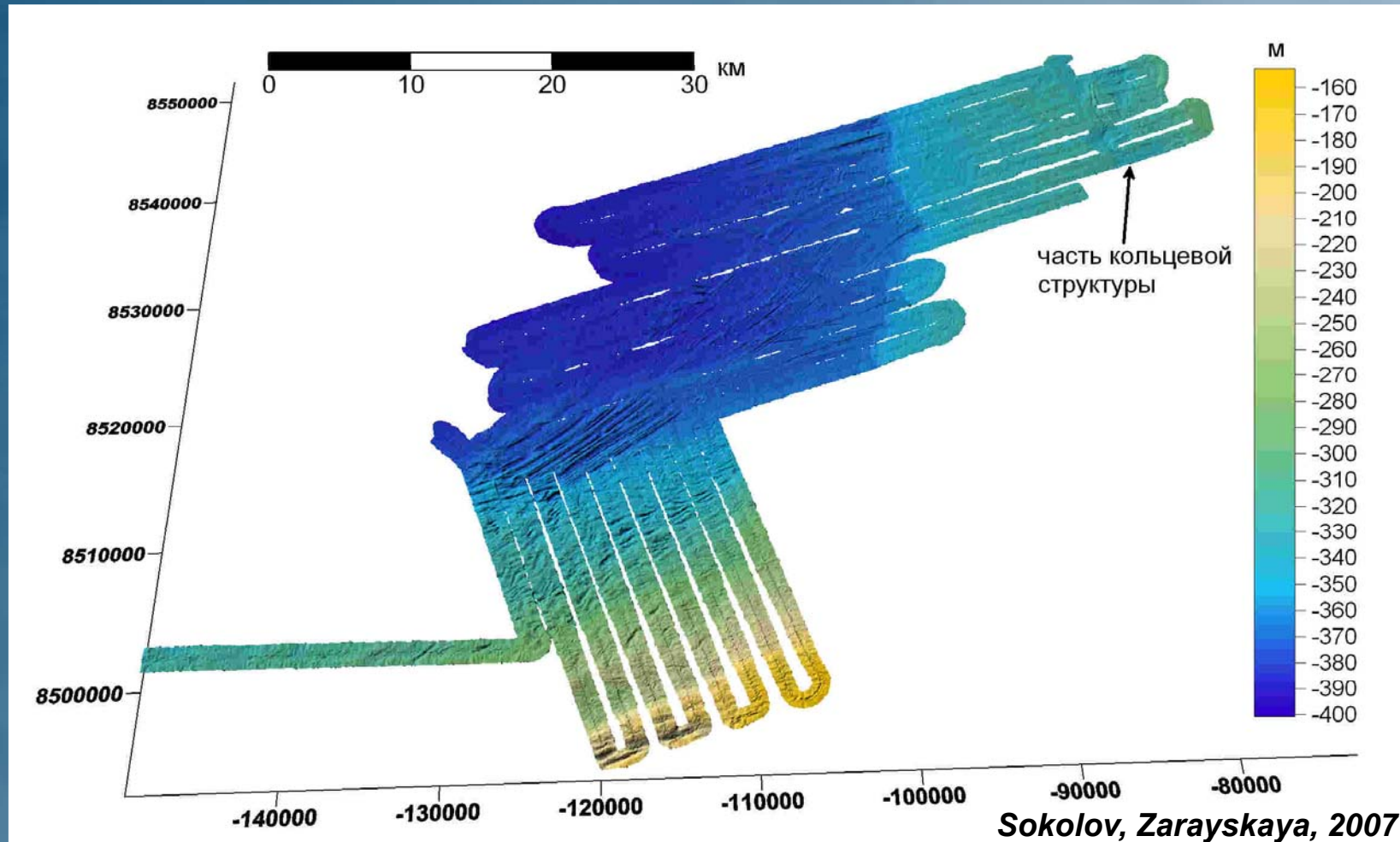
(view from the North)



Trough Ornen (Kvitoya)

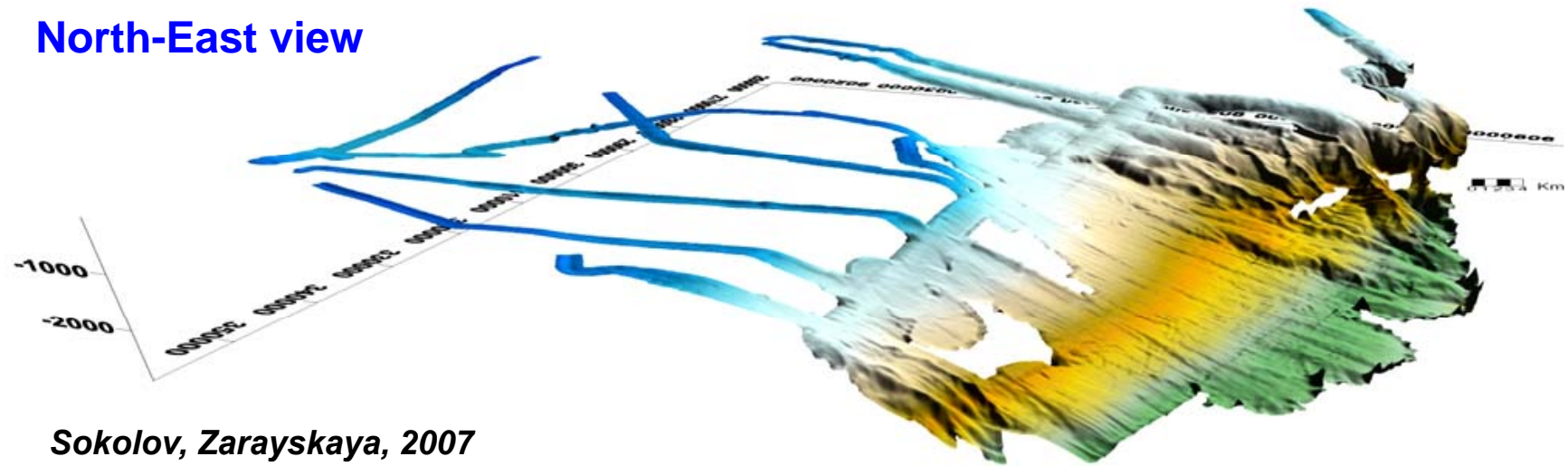


Storfjorden Trough

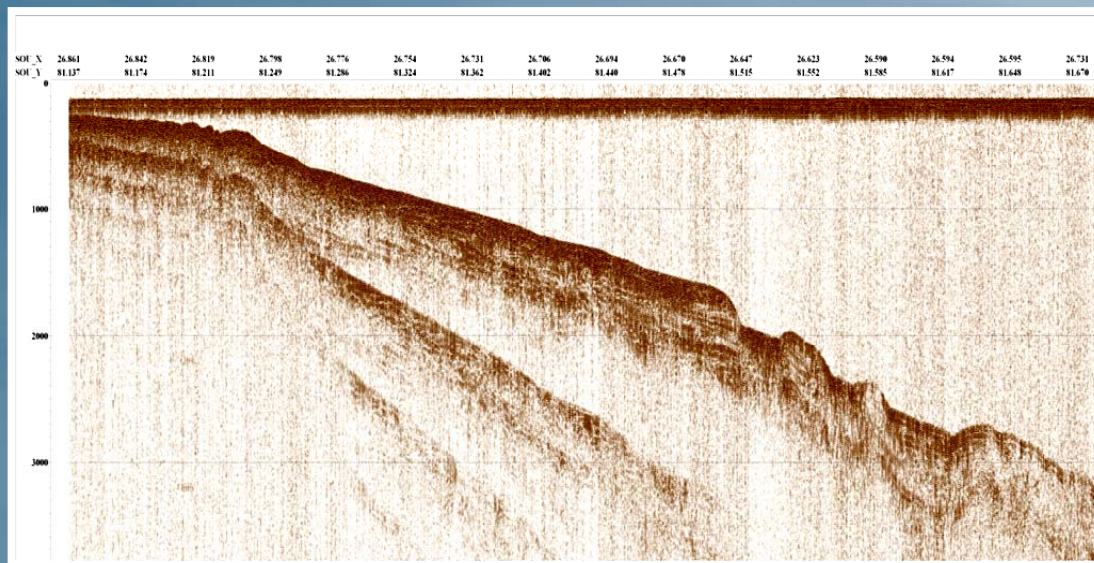


Continental Slope

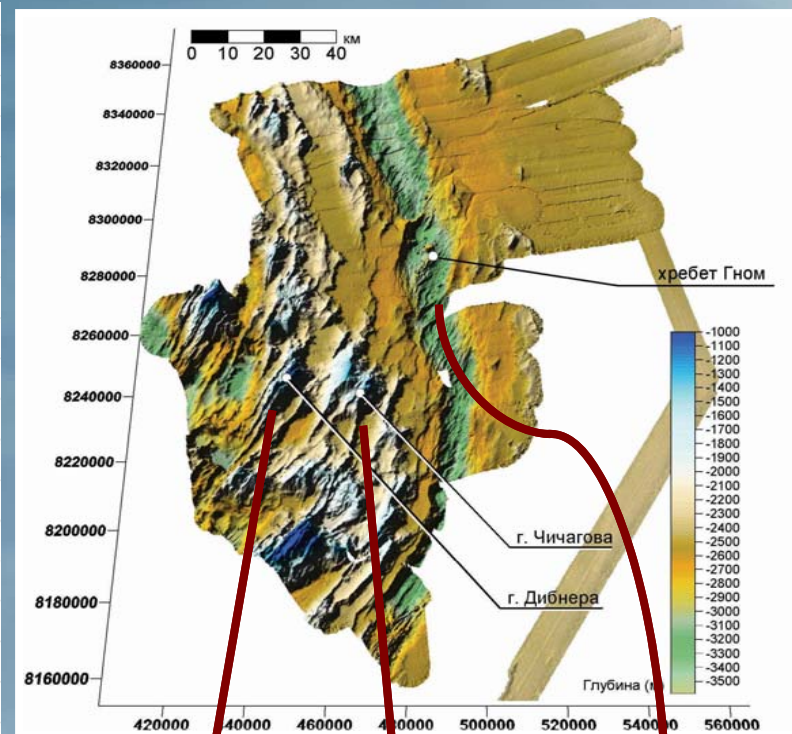
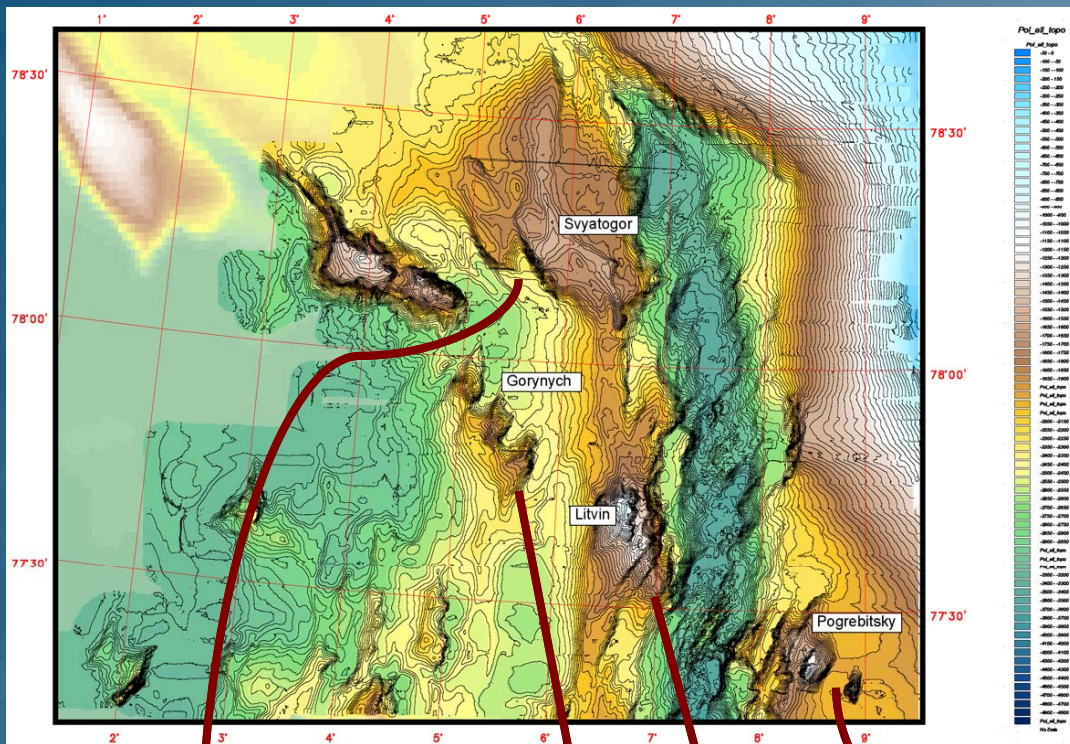
North-East view



Sokolov, Zarayskaya, 2007



Feature Names



Svyatogor

Gorynych

Litvin

Pogrebitsky

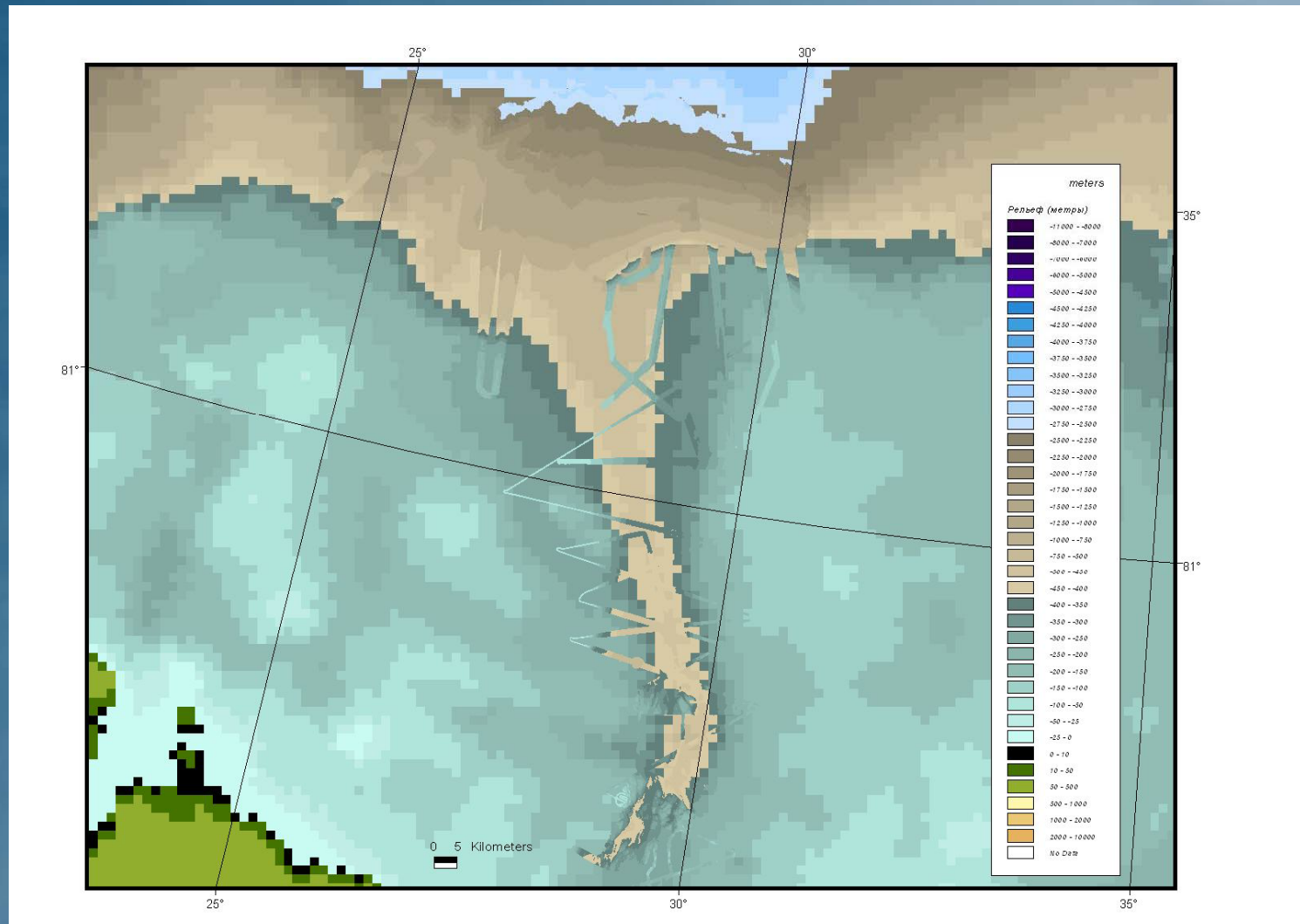
Dibner

Chichagov

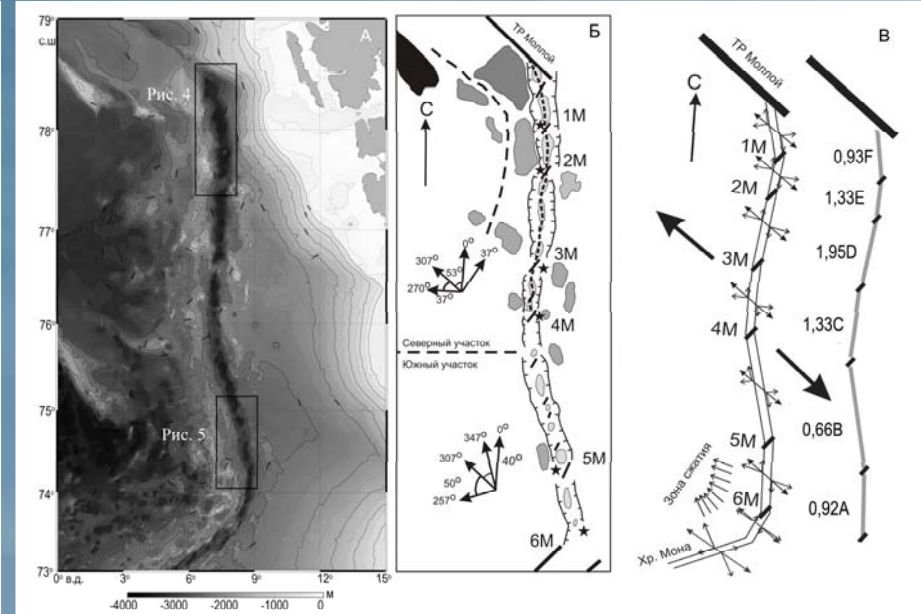
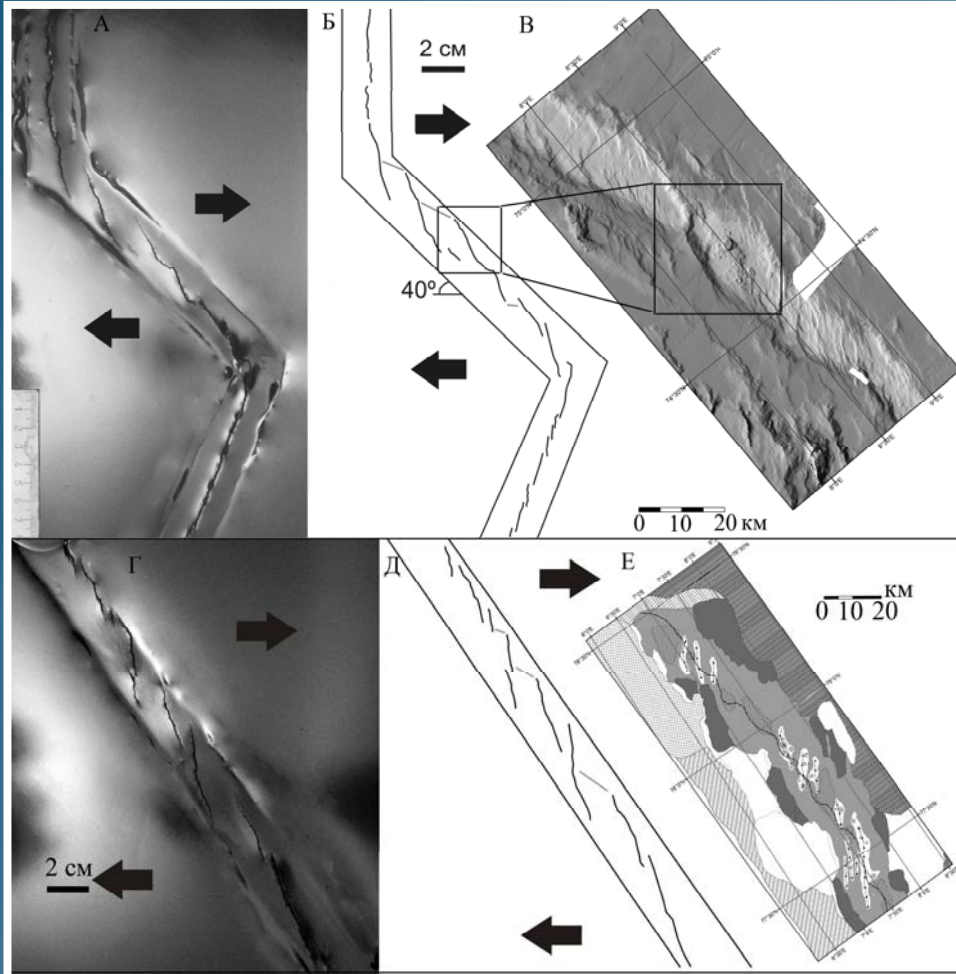
Gnom



Difference between Strakhov bathymetry and IBCAO



Physical Modeling



Kokhan, A.V., Grokholsky, A.L., Abramova, A.S., Dubinin, E.P., Sokolov, S.Yu., 2010. Structure-forming deformations on Knipovich ridge (physical modeling). *Geophysical Research Abstracts*, vol. 12.

Search for flight AF 477

The screenshot shows the NOAA Bathymetry Data Viewer interface. The main map displays bathymetry data over the Amazon basin and surrounding regions, with various survey tracks overlaid in yellow and orange. The interface includes a search bar, navigation controls, and a layers panel on the right. The layers panel is set to show 'Local (High-resolution)' bathymetry. A pop-up window titled 'Identified Features (2)' is open, showing details for two cruise surveys:

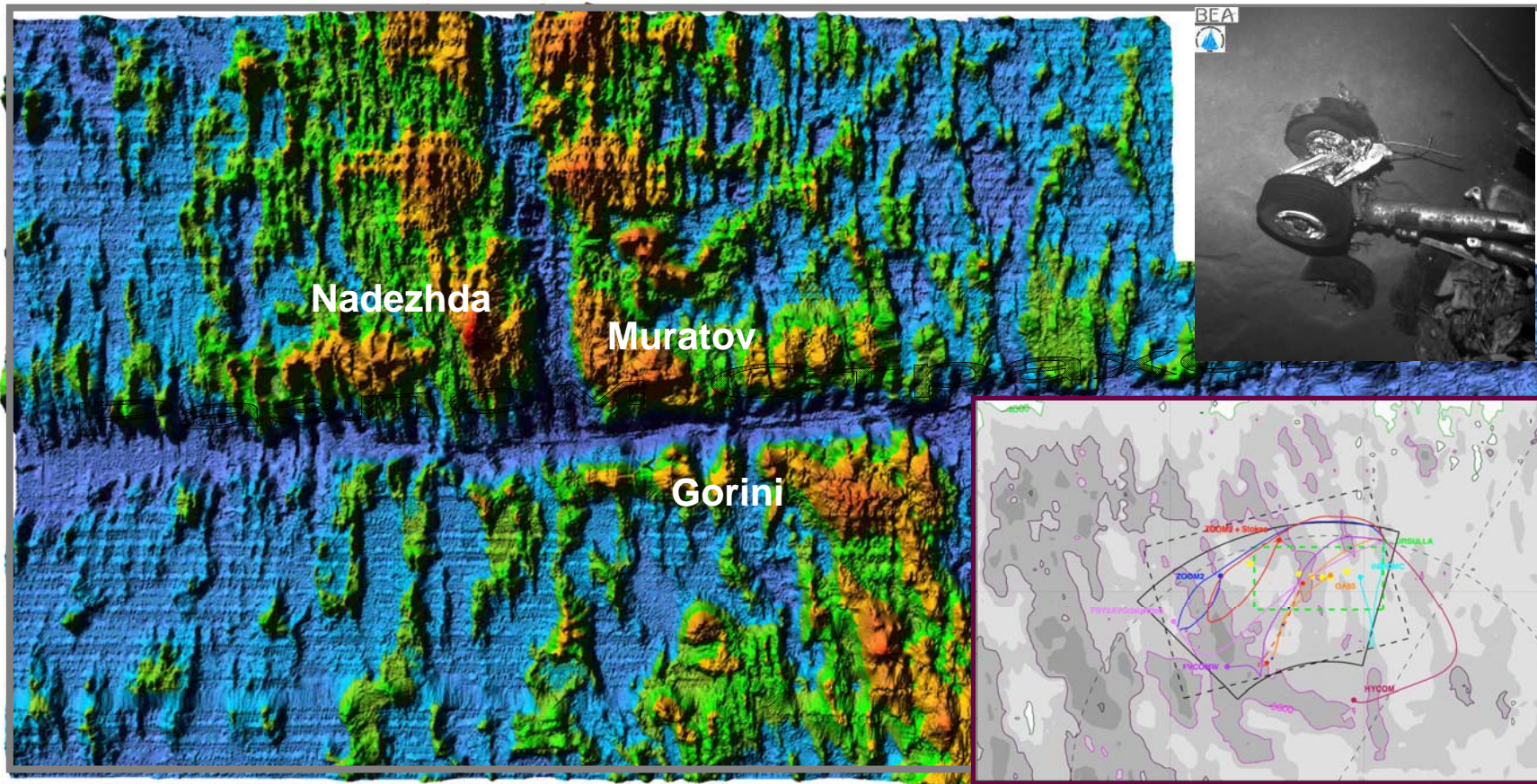
- CRS11-12 (1990) (Multibeam Bathymetry)**
 - Link to Data: [Cruise File List](#)
 - Survey Name: CRS11-12
 - Ship Name: Nikolaj Strakhov
 - Survey Year: 1990
 - Chief Scientist: Gleb Udintsev
 - Instrument: Hollming EKHOS II
 - File Count: 132
 - Track Length (km): 32618
 - Total Time (hrs): 2328
 - Bathymetry Beams: 7484328
 - Amplitude Beams: 0
 - Sidescan: 0
- CRUISE7 (1988) (Multibeam Bathymetry)**
 - Link to Data: [Cruise File List](#)
 - Survey Name: CRUISE7
 - Ship Name: Nikolaj Strakhov
 - Survey Year: 1988
 - Chief Scientist: Gleb Udintsev
 - Instrument: Hollming EKHOS II
 - File Count: 84
 - Track Length (km): 34403
 - Total Time (hrs): 1729
 - Bathymetry Beams: 7168339
 - Amplitude Beams: 0



7, 11 and 12 cruises of R/V “Akademik Nikolaj Strakhov”

34 W

30 W



Acknowledgments

GIN RAS

A. Mazarovich
A. Zayonchik
S. Sokolov
N. Turko
G. Agapova
N. Abramova
K. Dobrolyubova
E. Moroz
A. Kokhan
and
Strakhov crew

Norwegian Petroleum Directorate

H. Brekke

GEBCO

UNH CCOM

L. Mayer
A. Armstrong
D. Monahan

Stockholm University

M. Jakobsson

AWI

H.-W. Schenke
F. Niederjasper

Thank you for your attention

