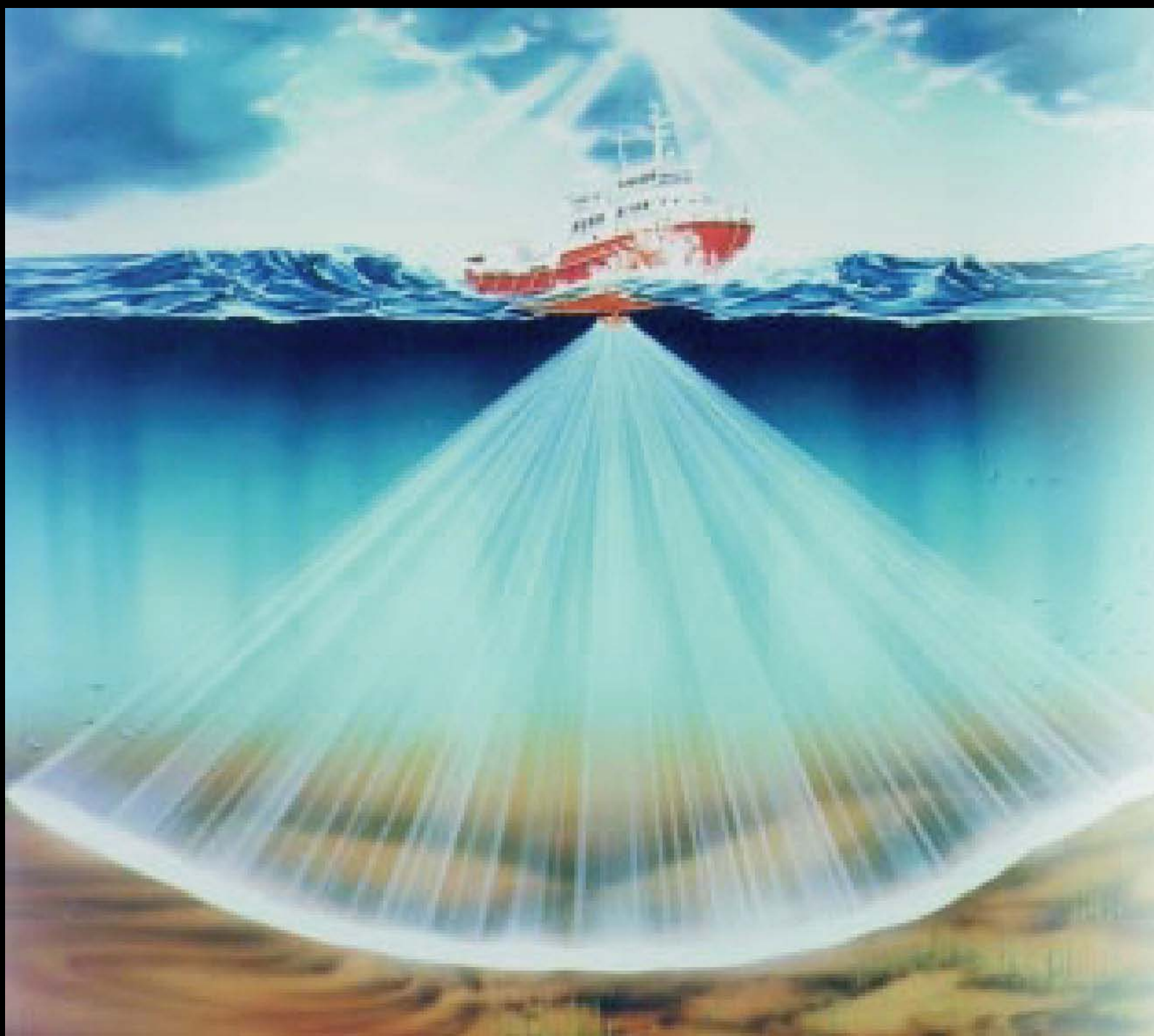
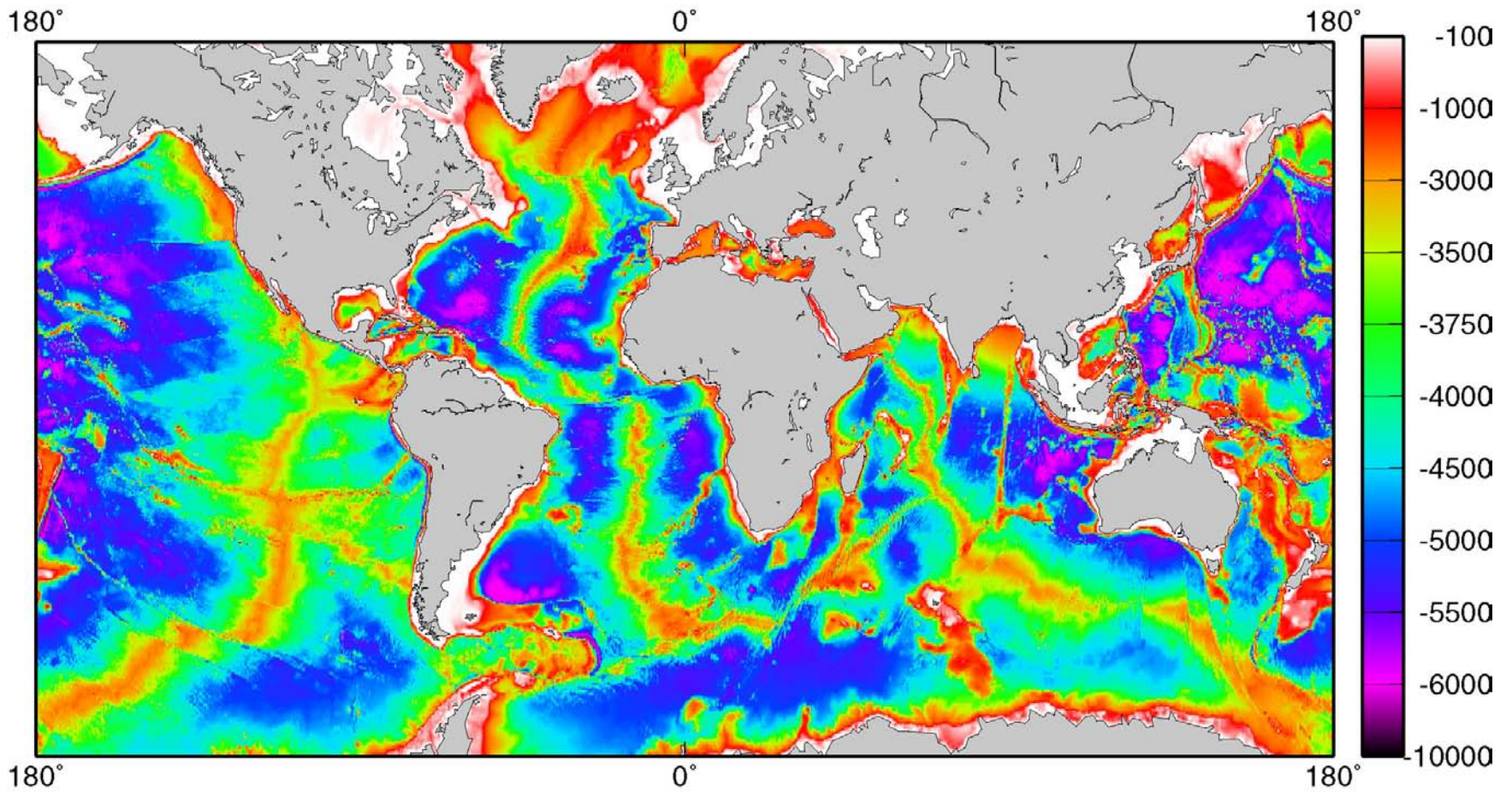


**Contribution of multibeam bathymetry
to understanding the processes
that shape the mid-ocean ridges**



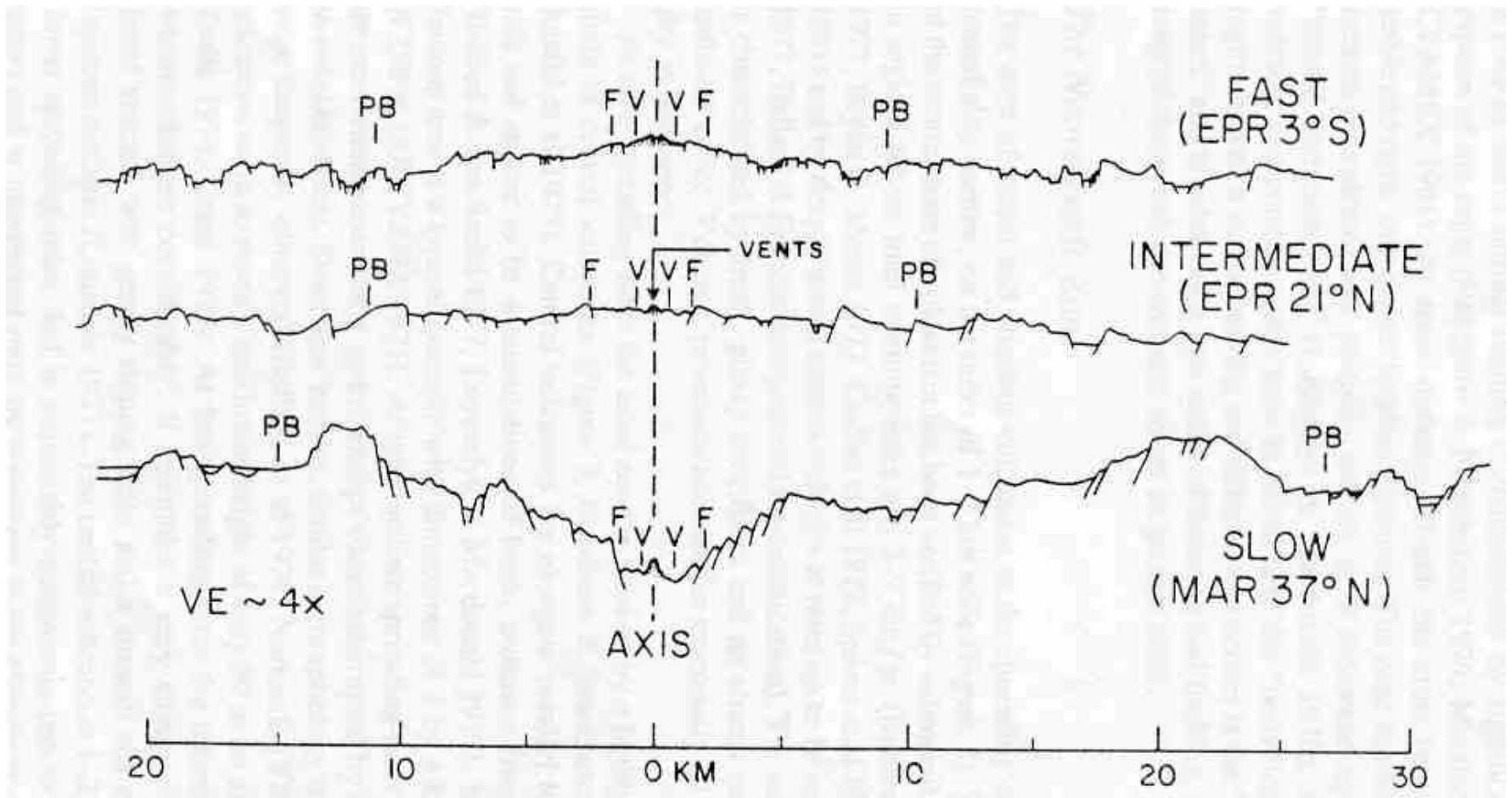
Kongsberg
Simrad



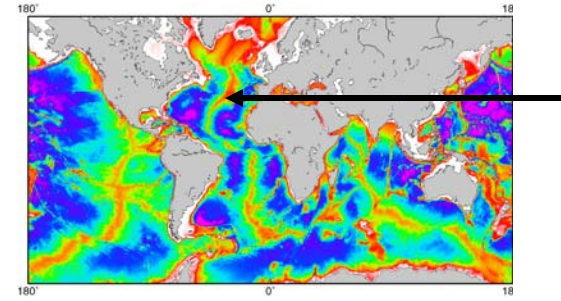
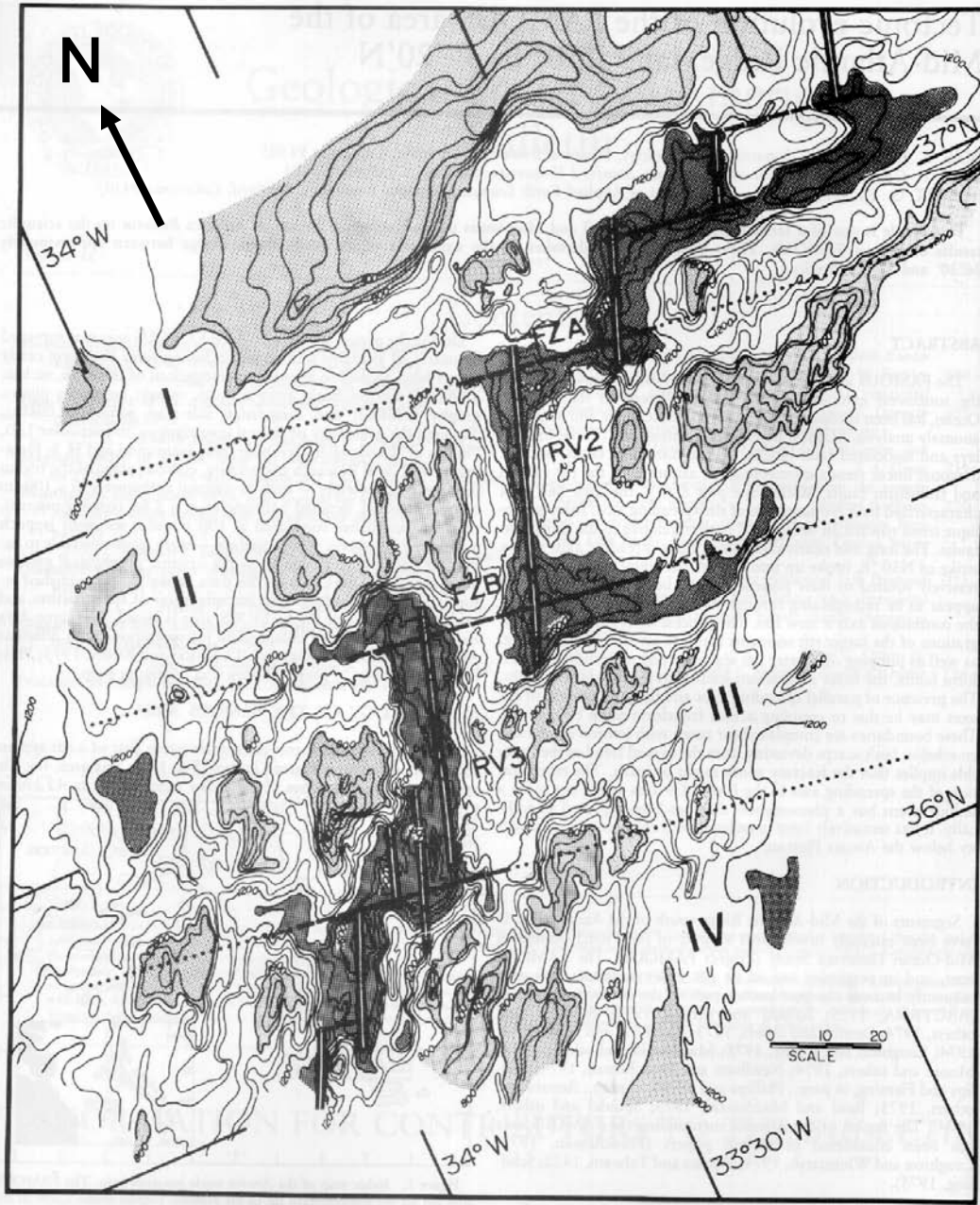
Smith and Sandwell, 1997



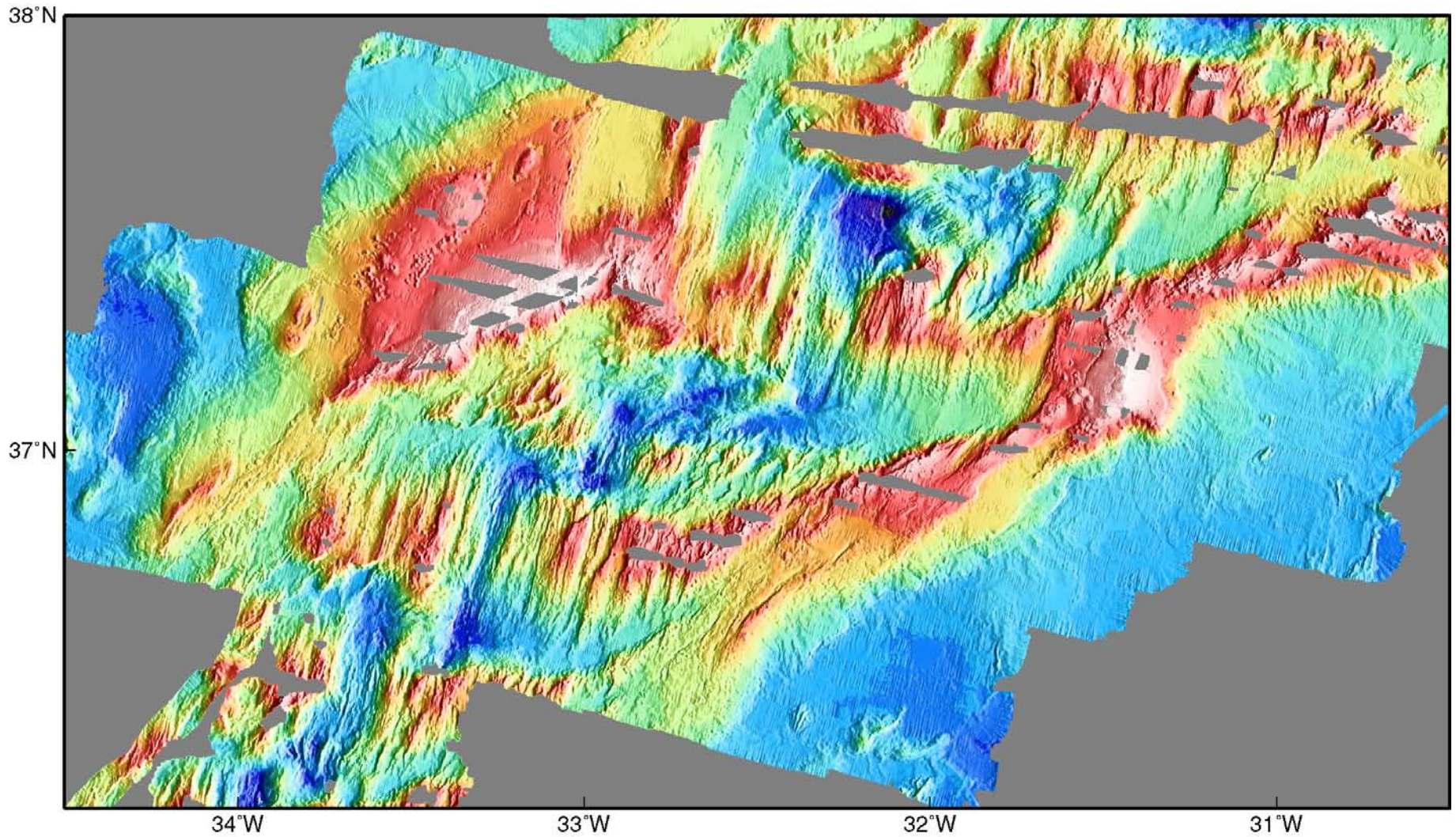
Krafla eruption, 1977, Iceland



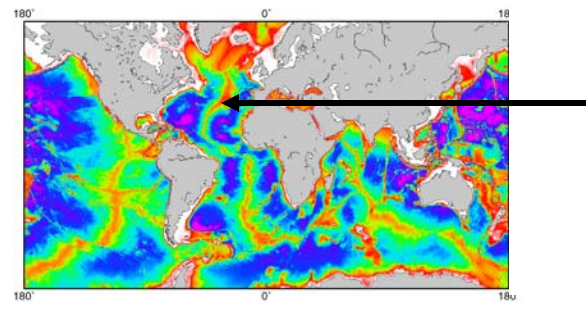
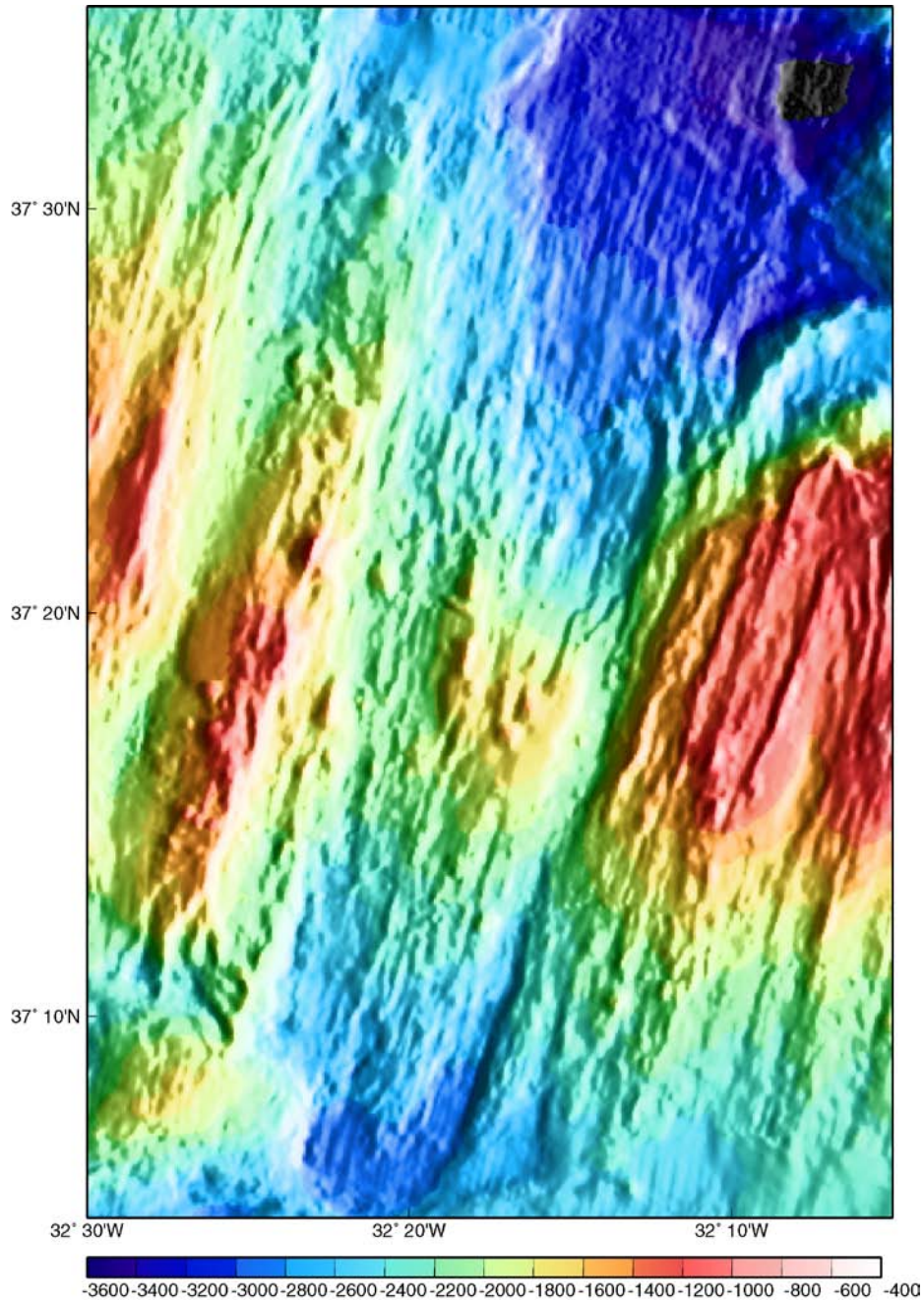
Across-axis depth profiles

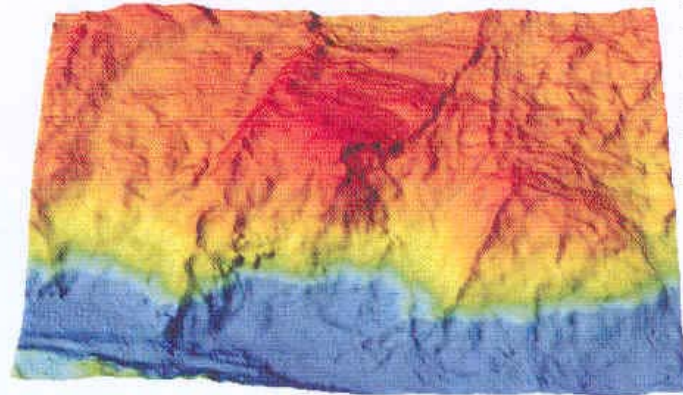
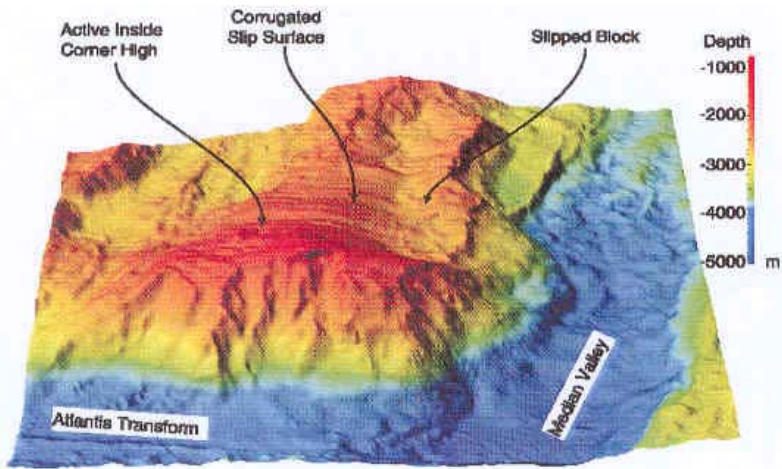


Ramberg et al., 1977



Cannat et al., 1997



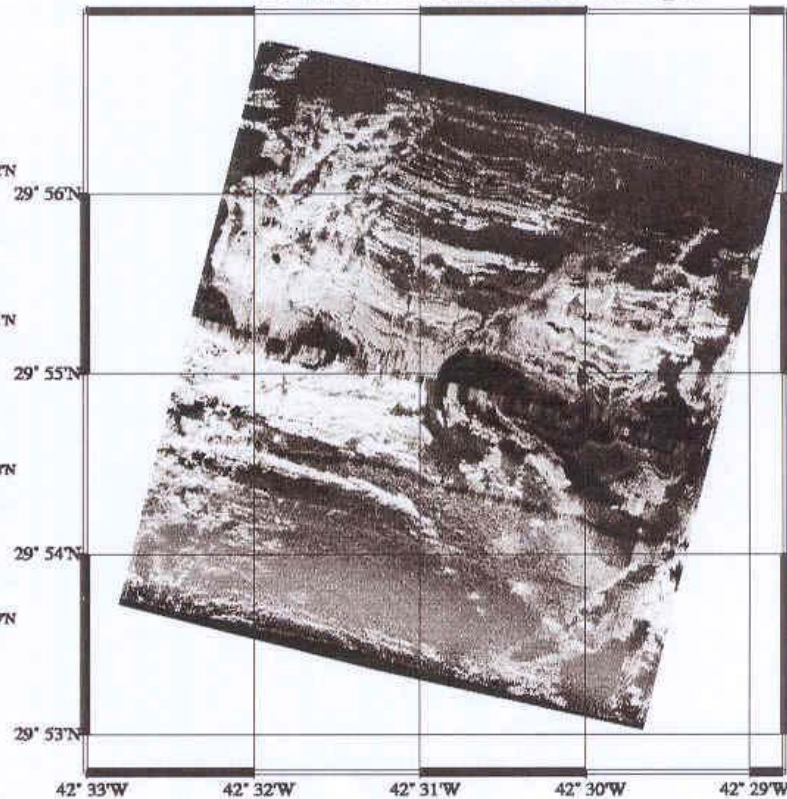
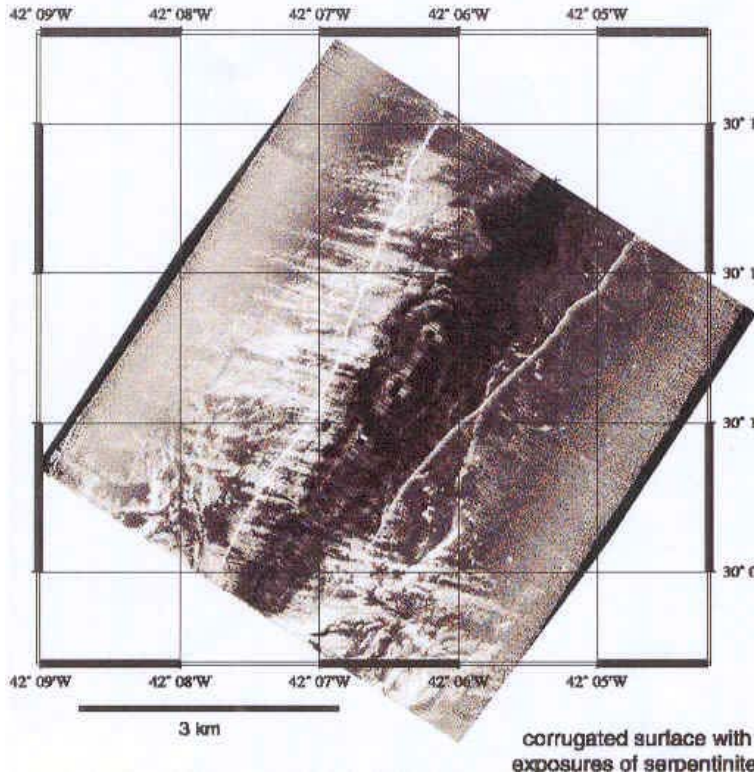


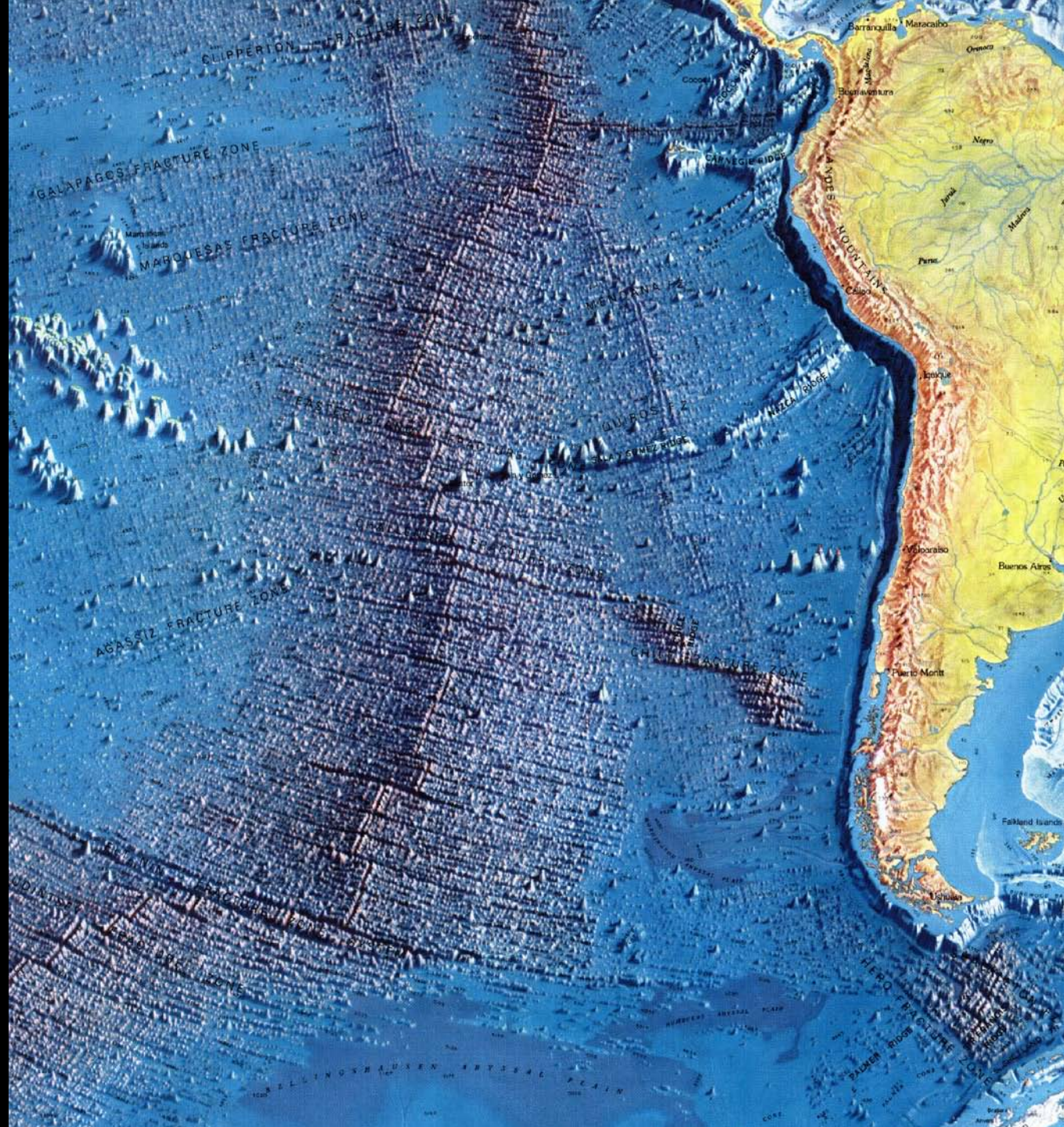
: fossil high

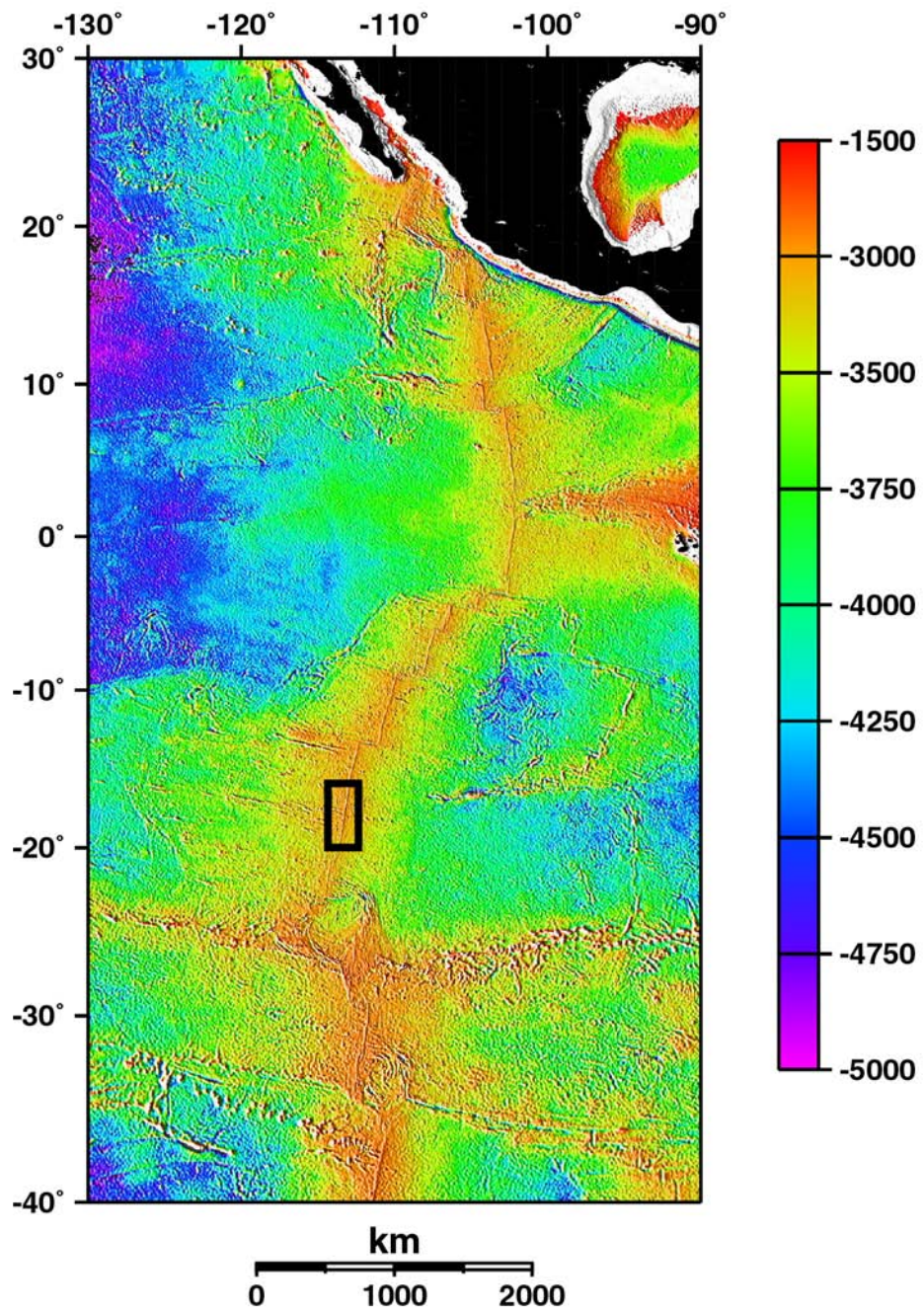
: side scan across fossil high.

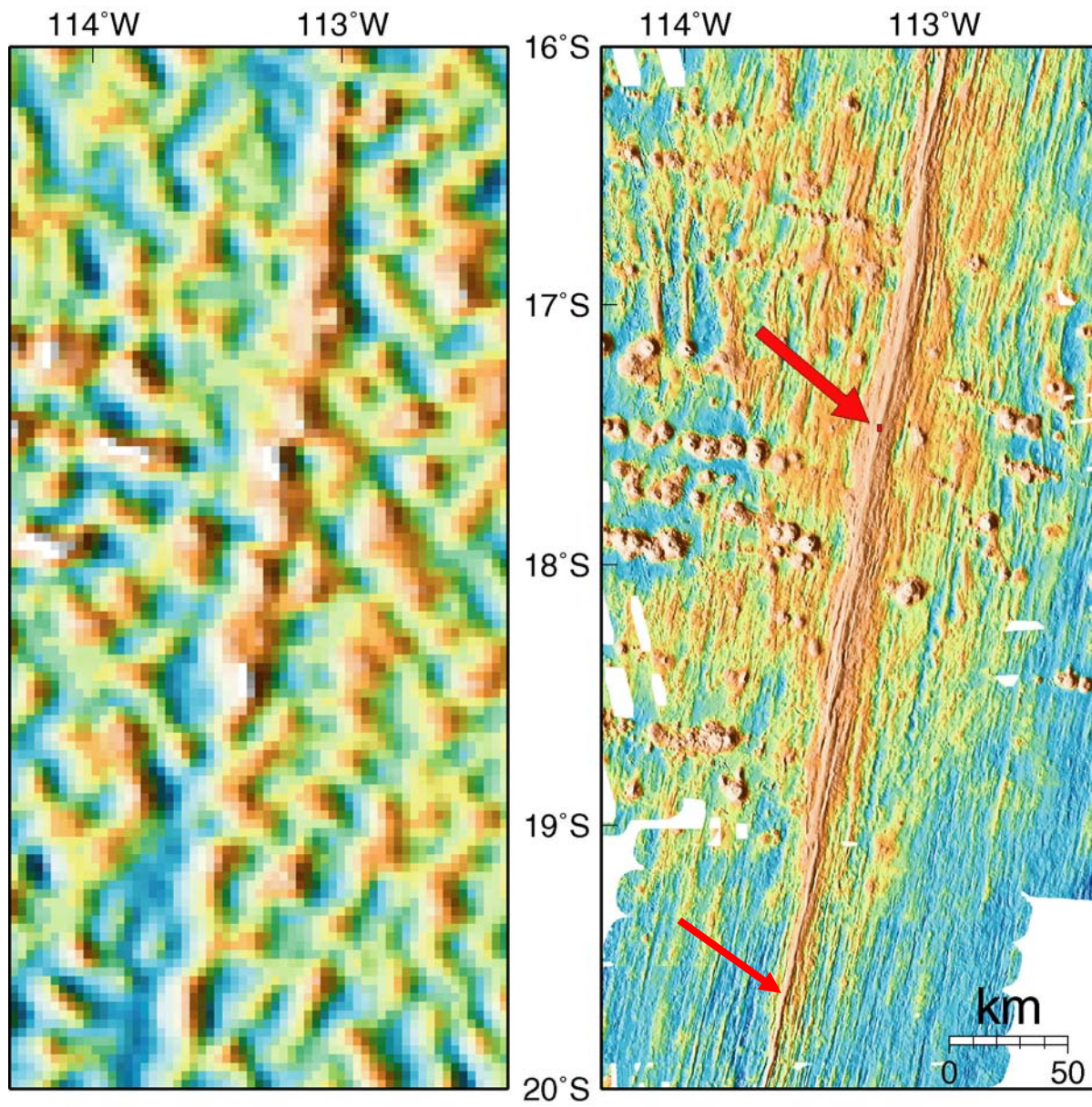
Cann et al.
1997

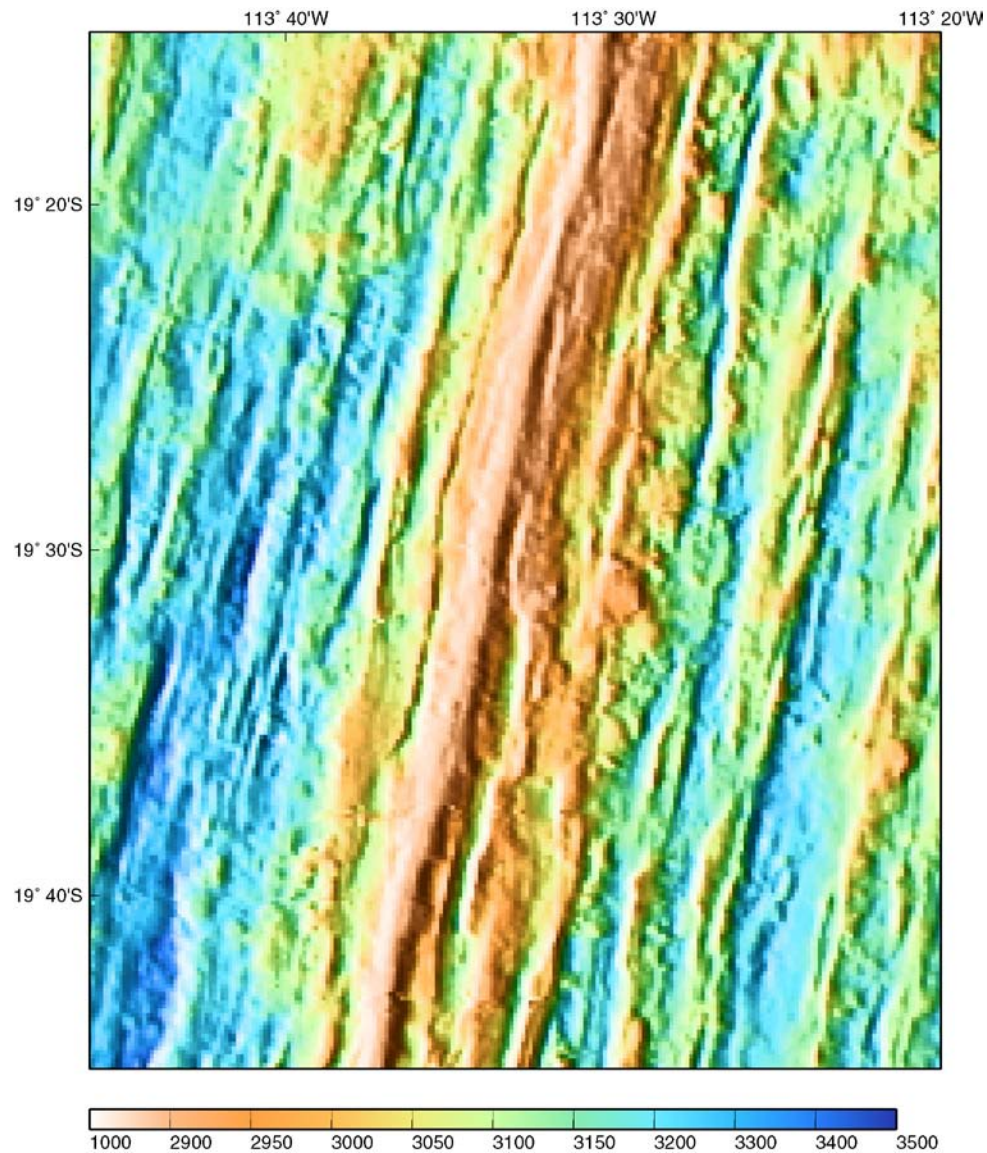
active high
side scan across active high

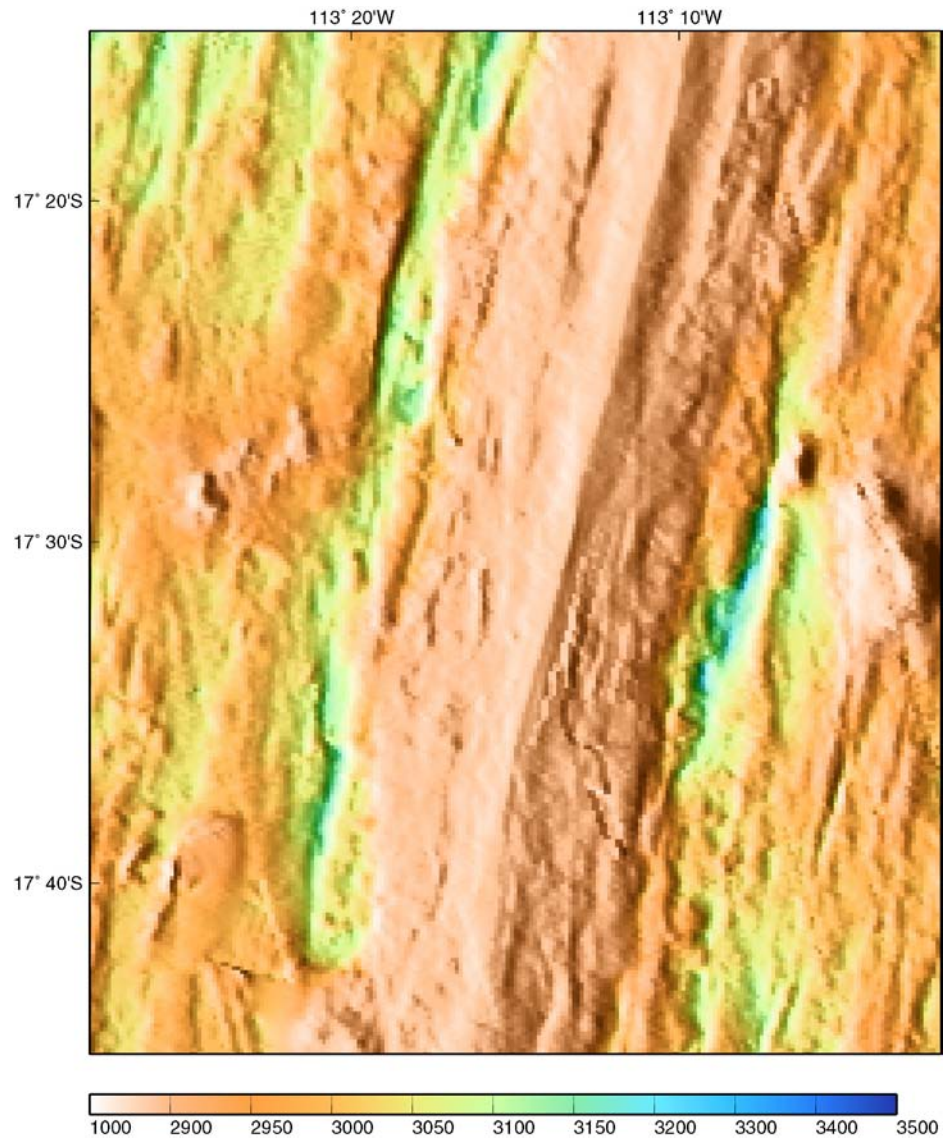


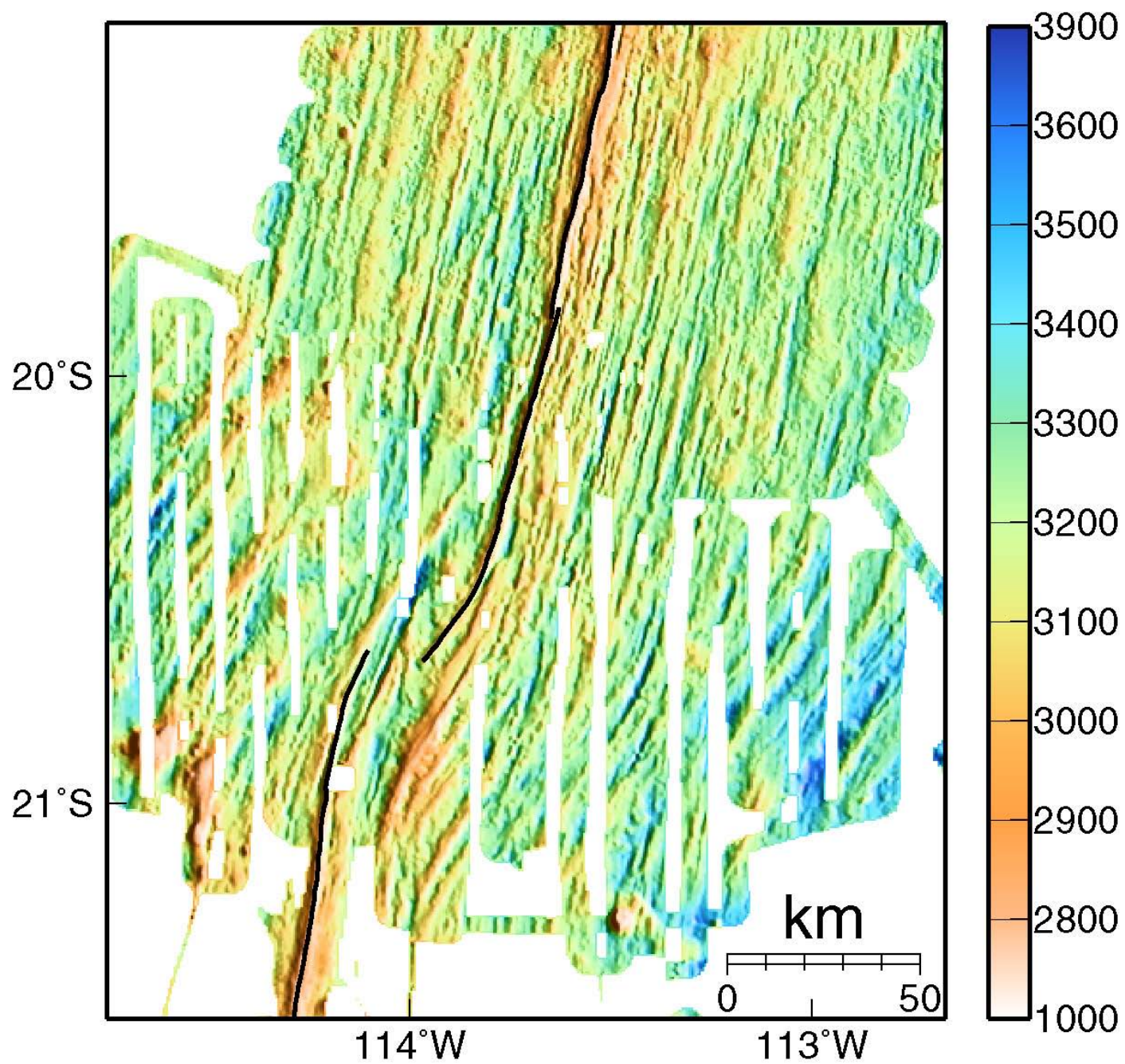




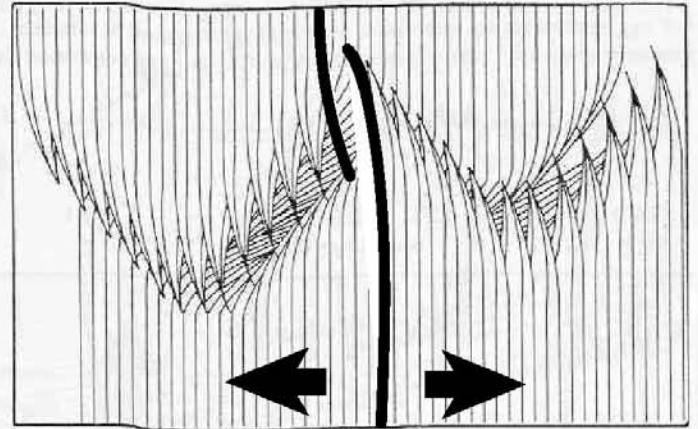
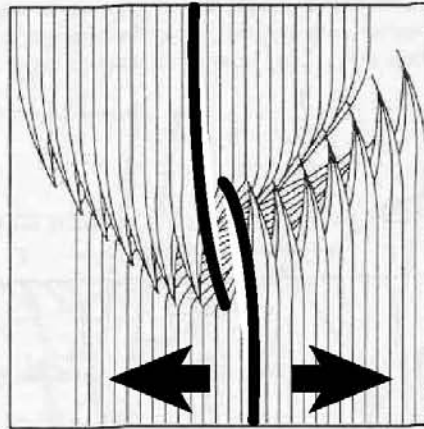
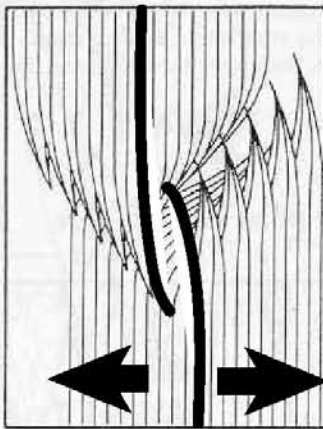




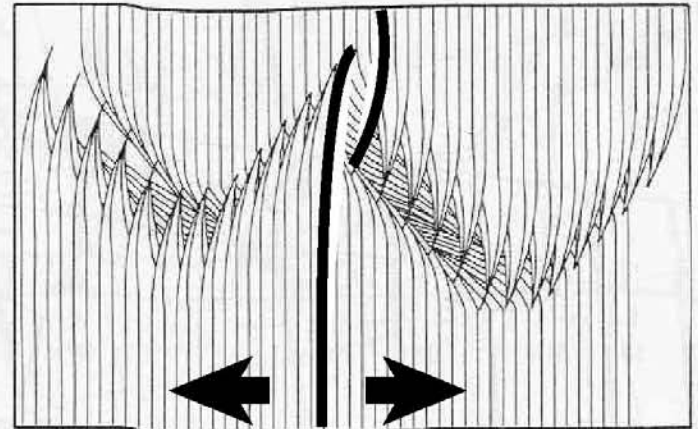
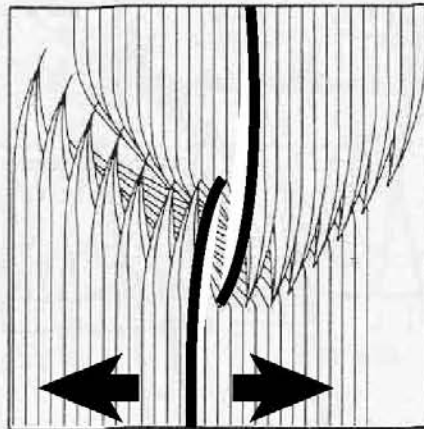
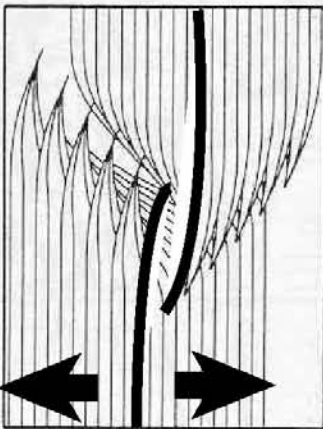


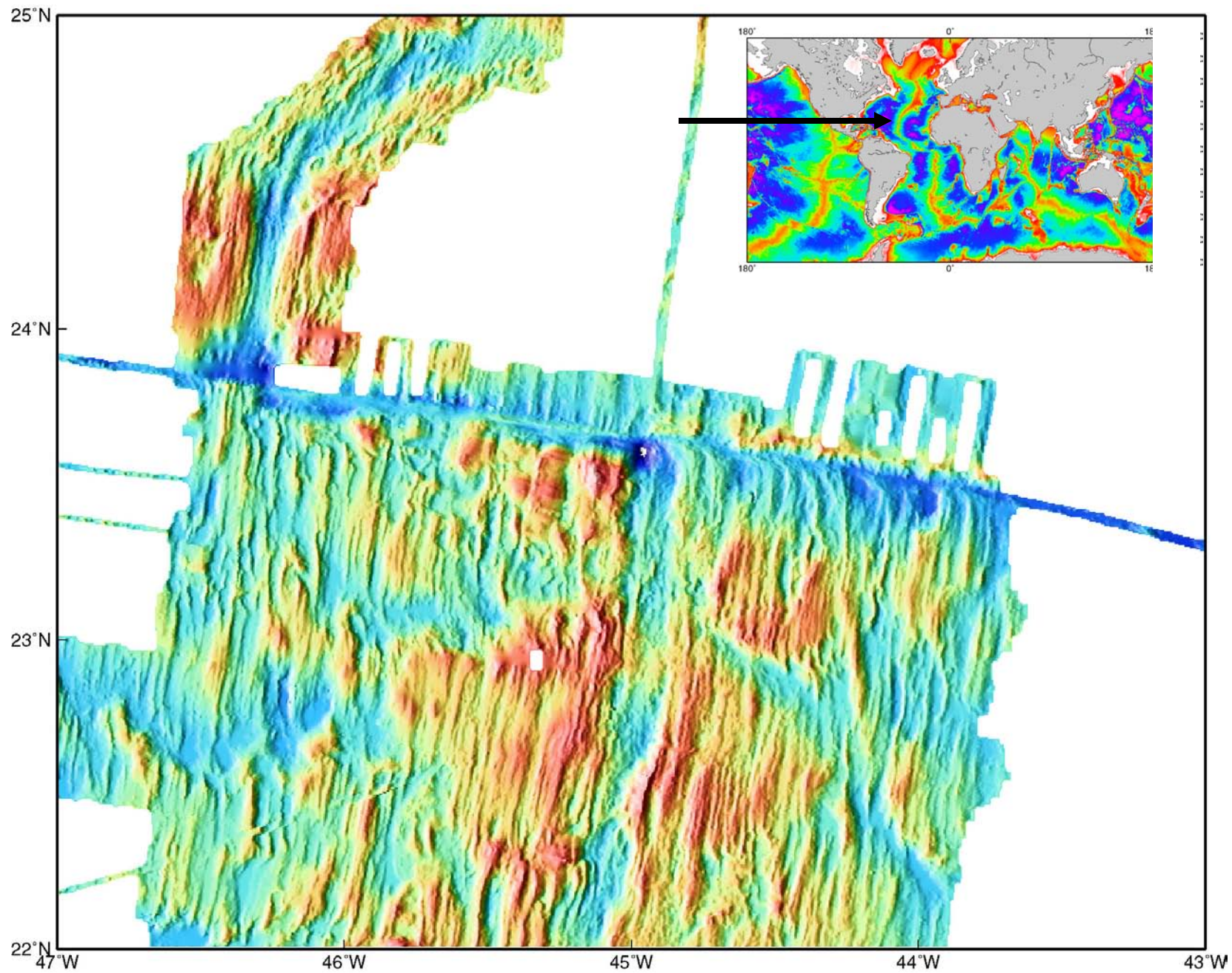


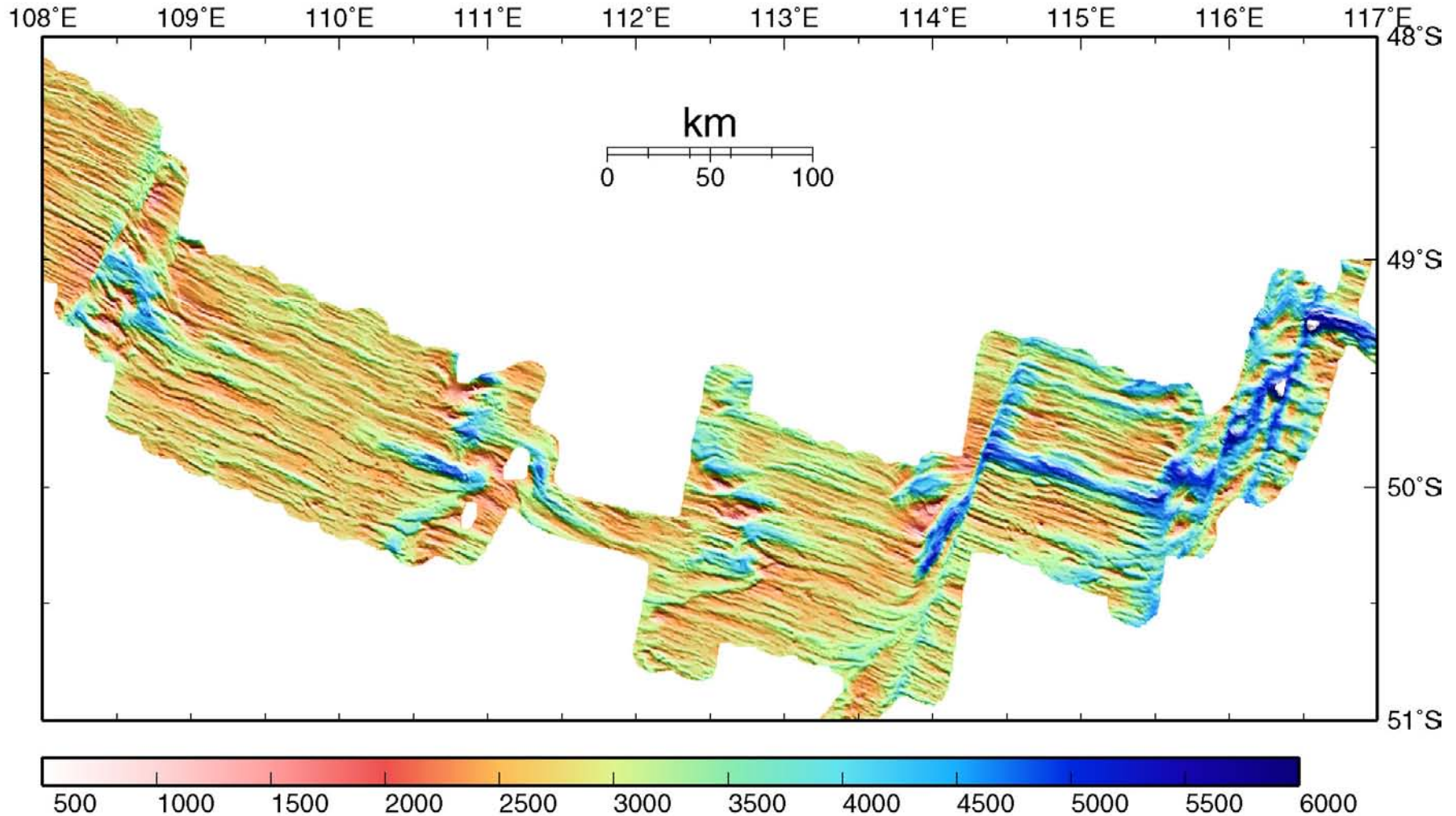
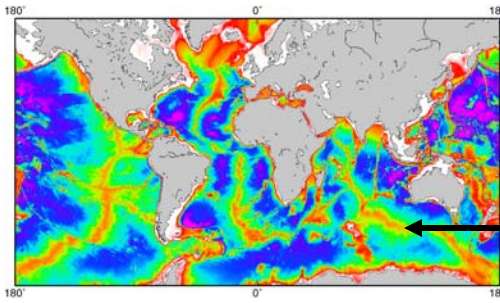
LEFT-STEPPING OSC

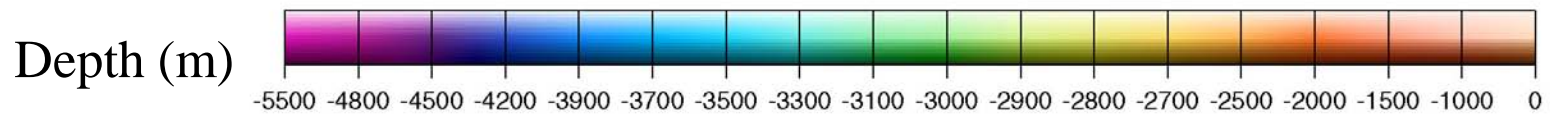
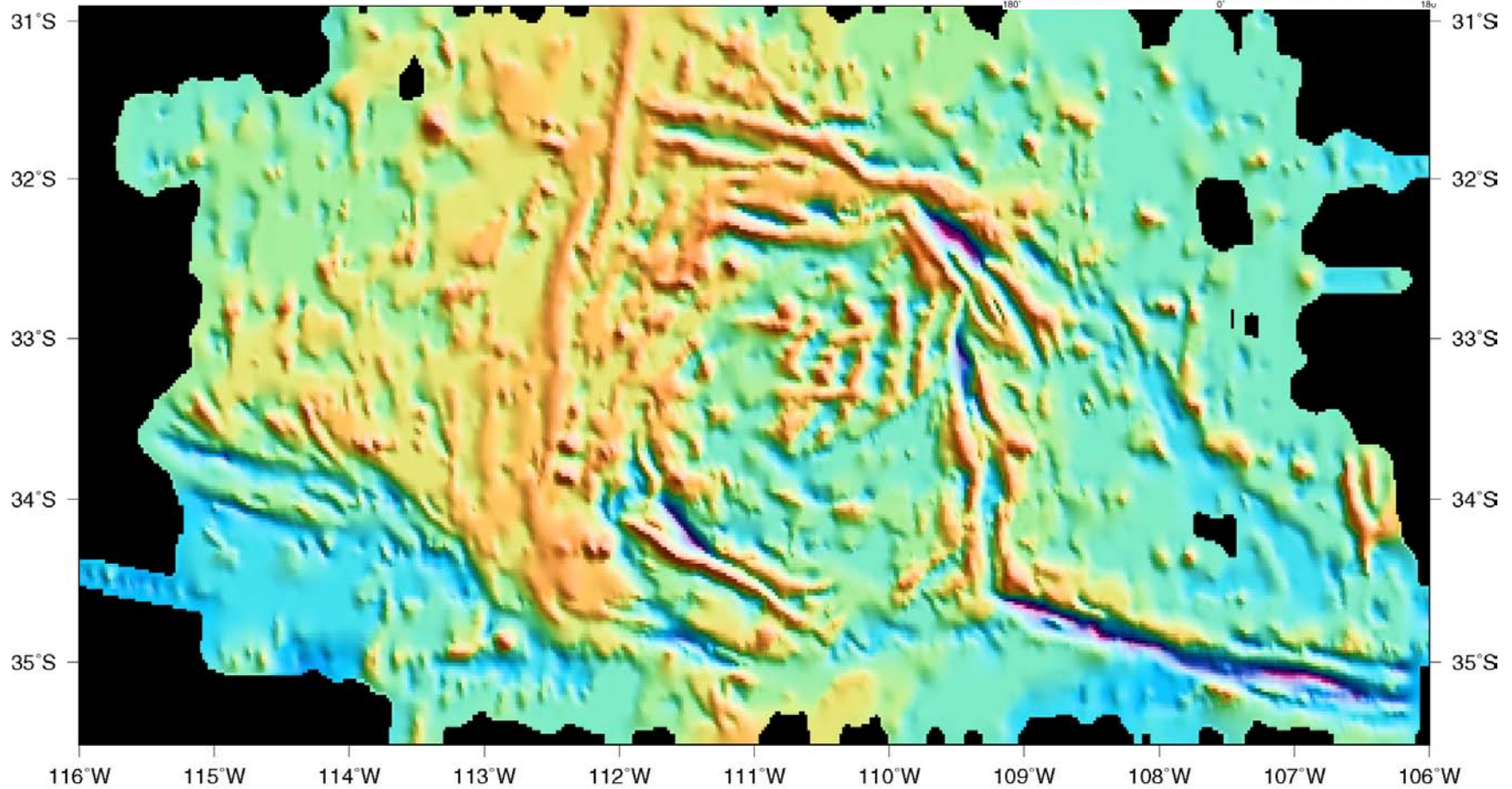
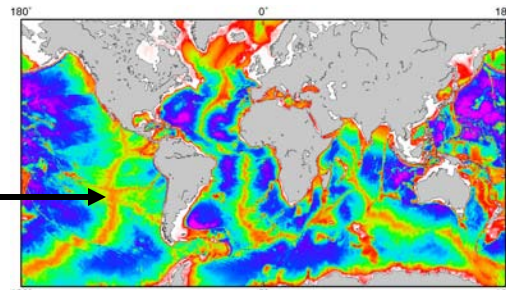


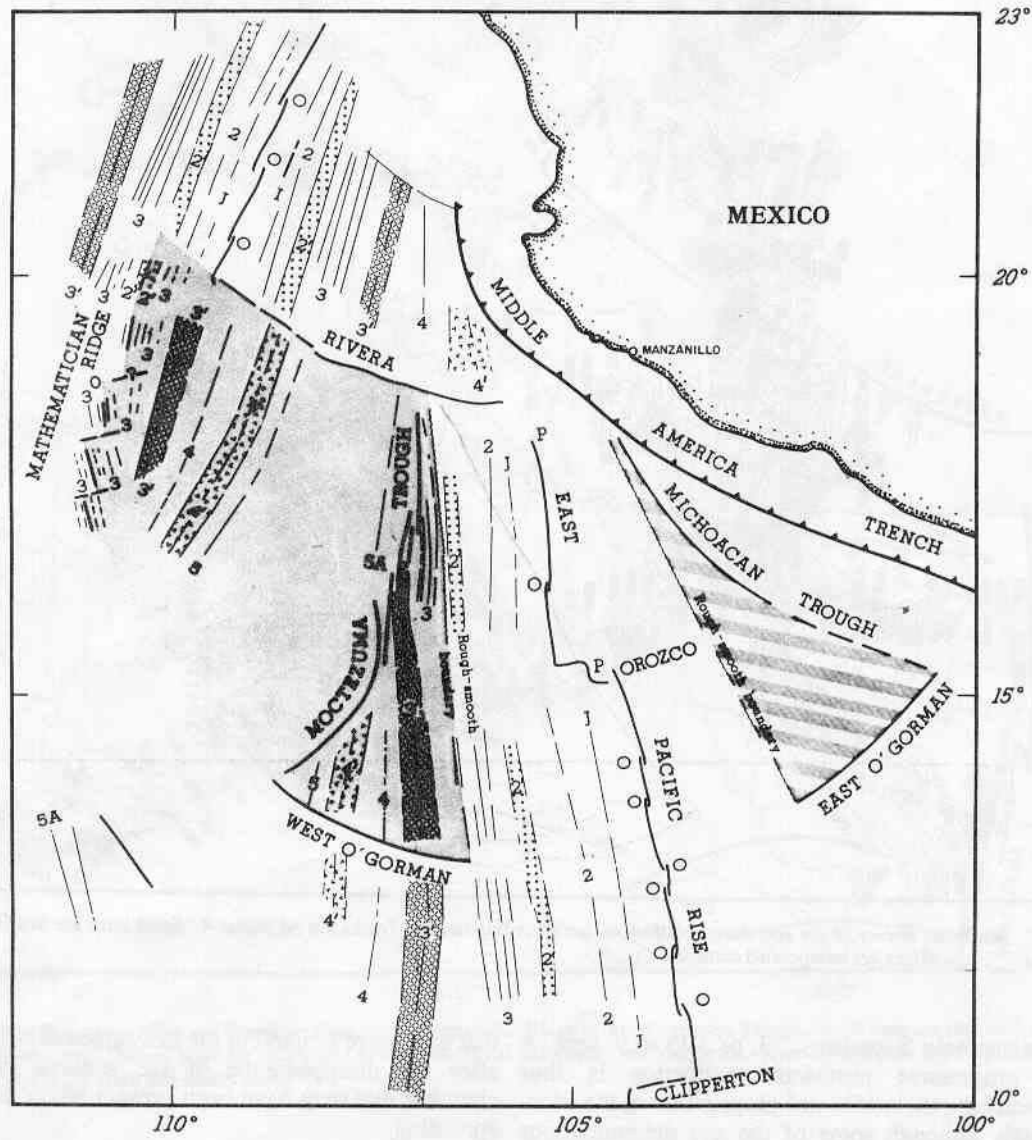
RIGHT-STEPPING OSC



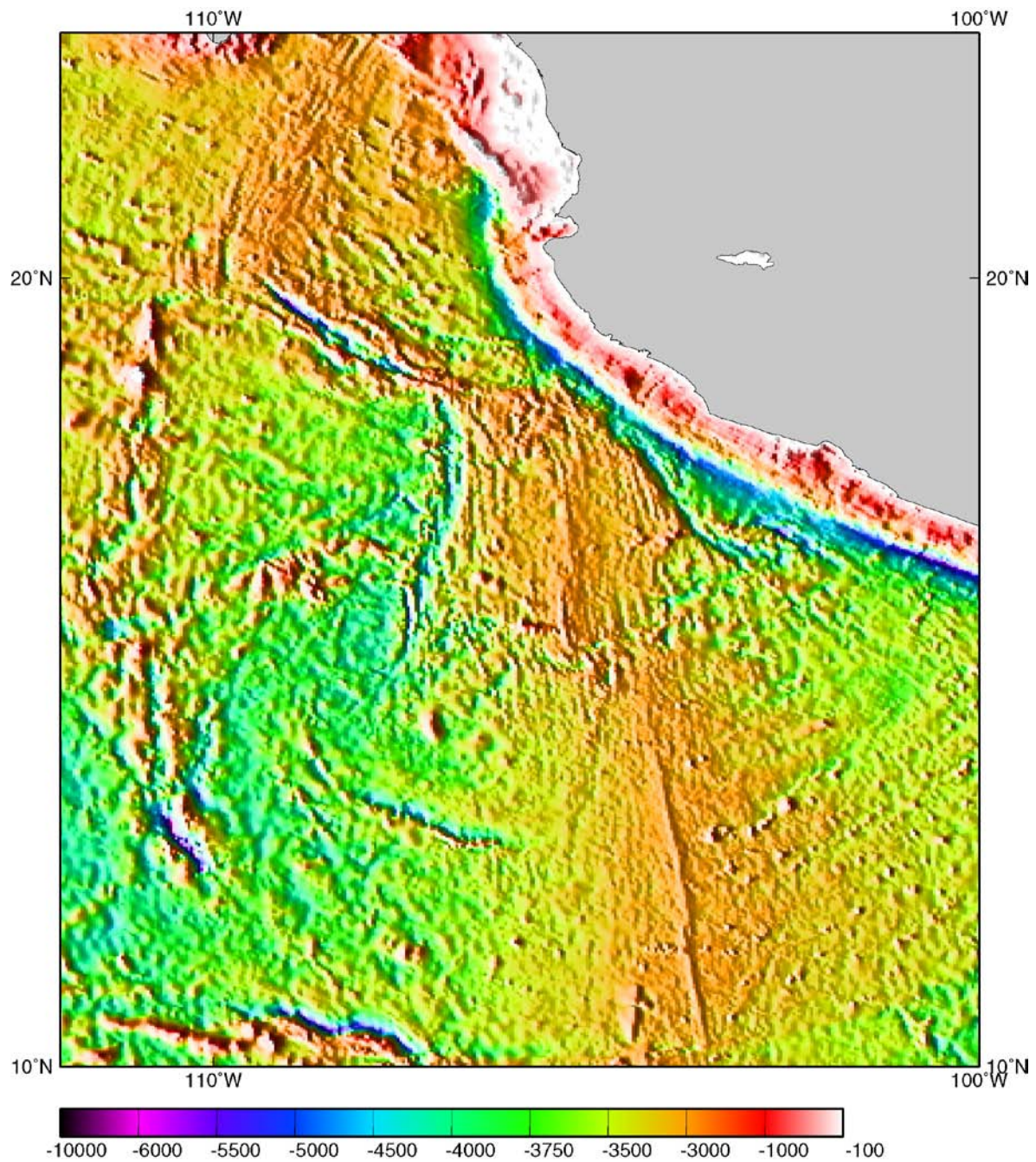


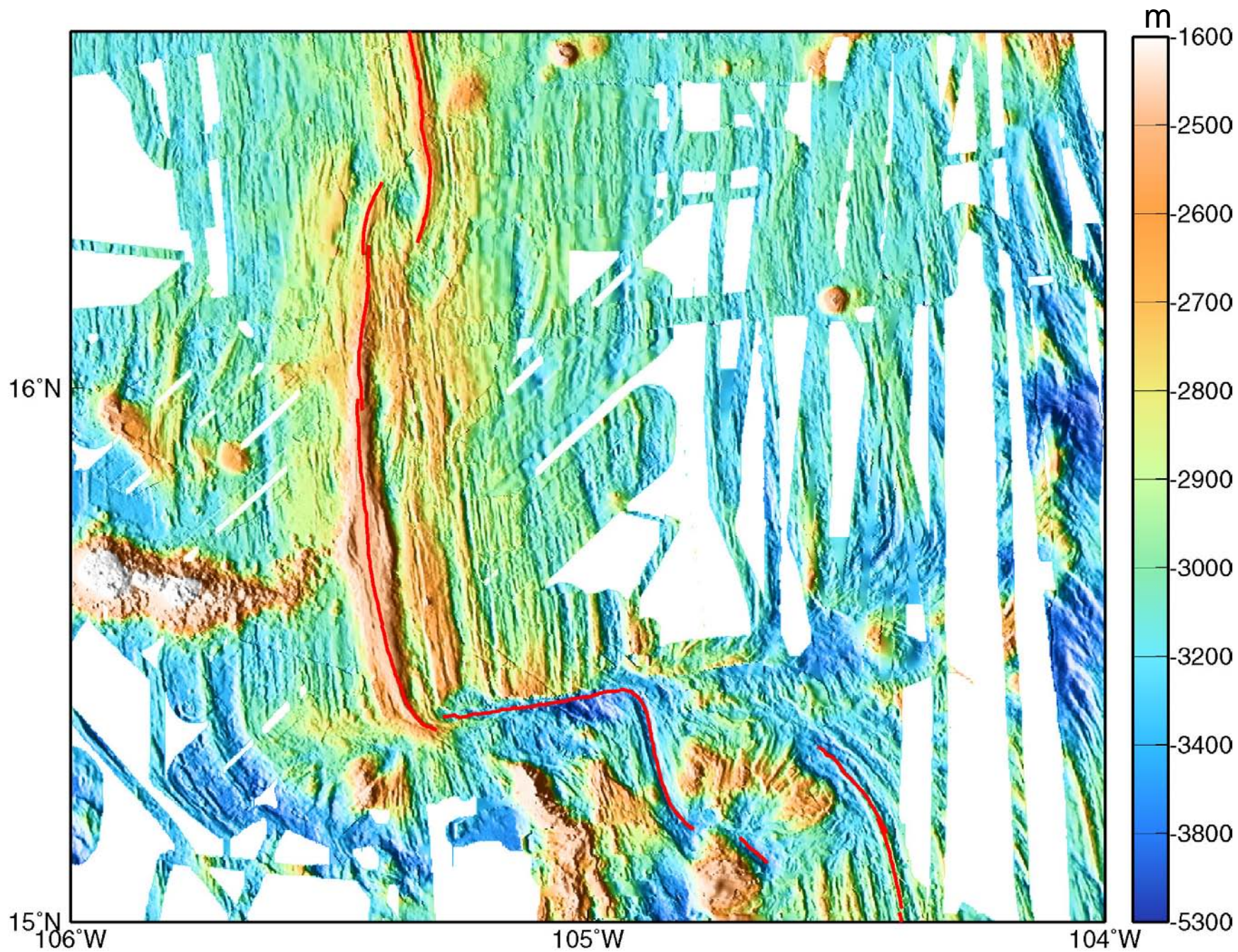


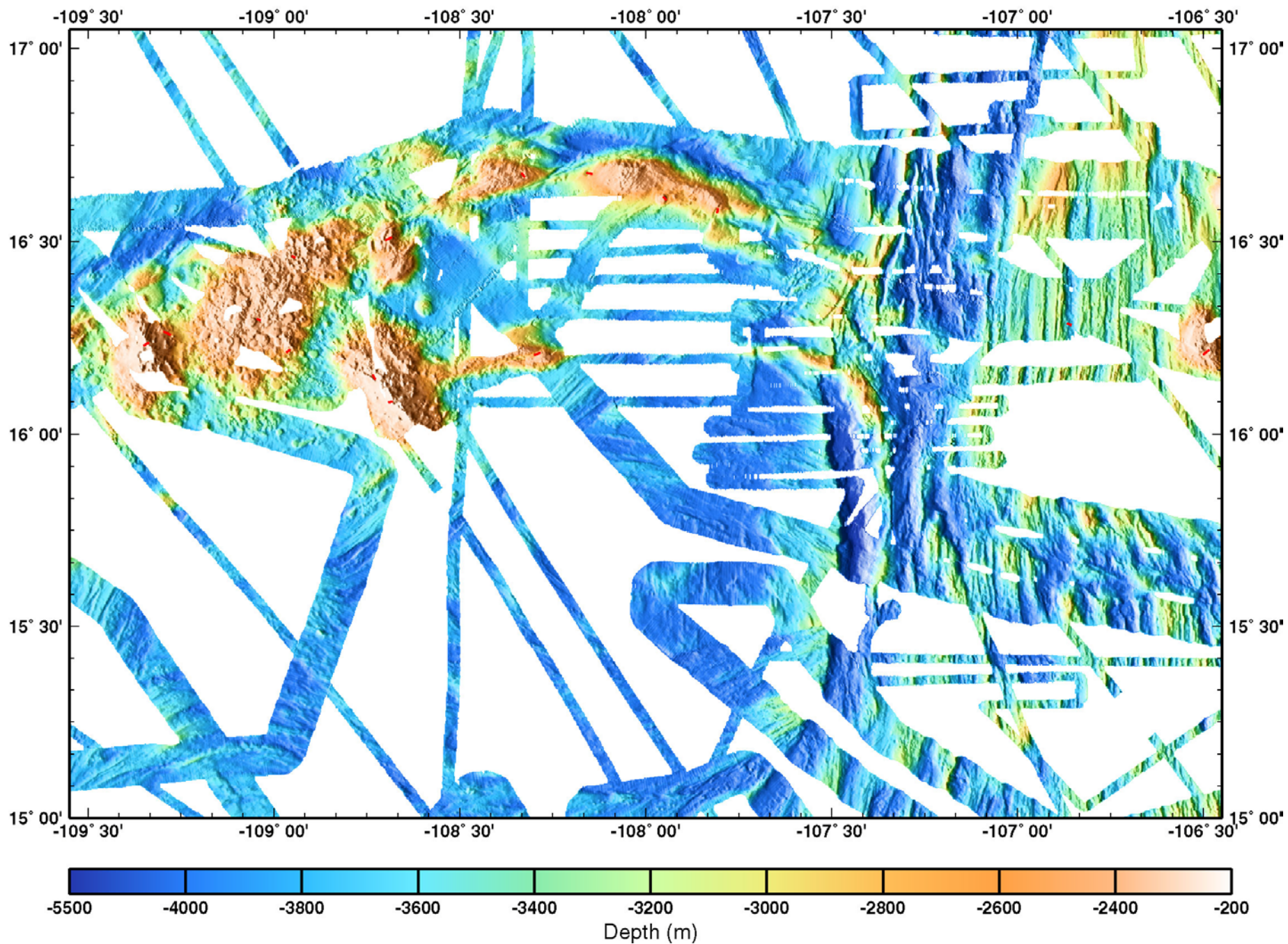




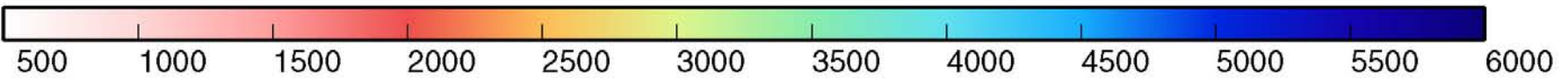
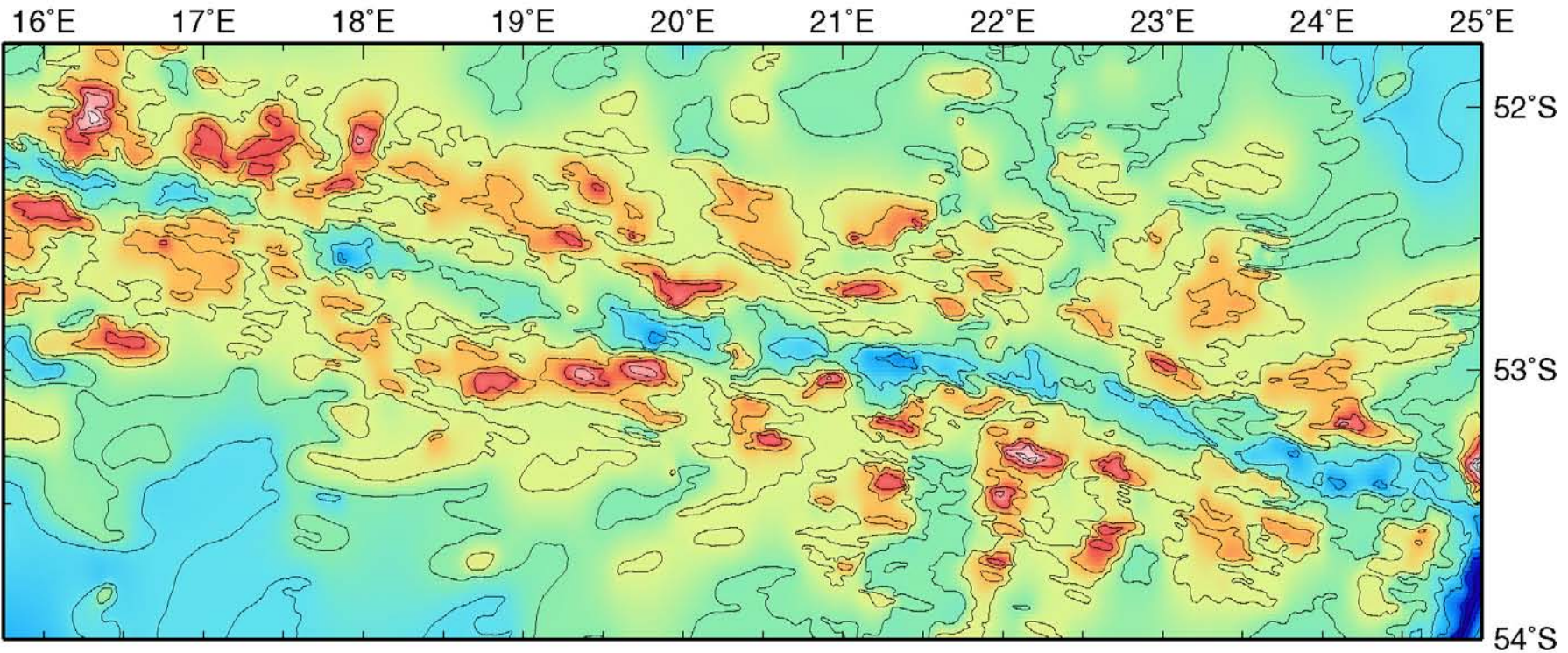
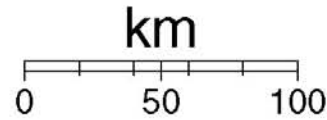
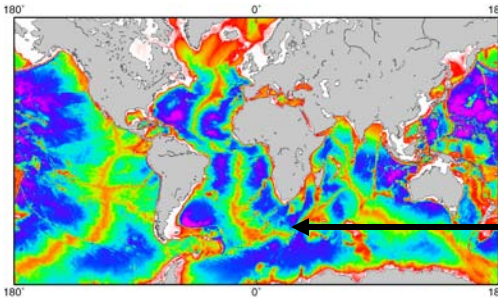
Mammerickx et al., 1988



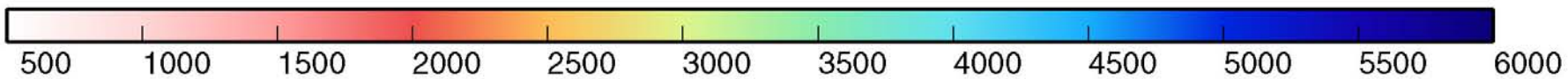
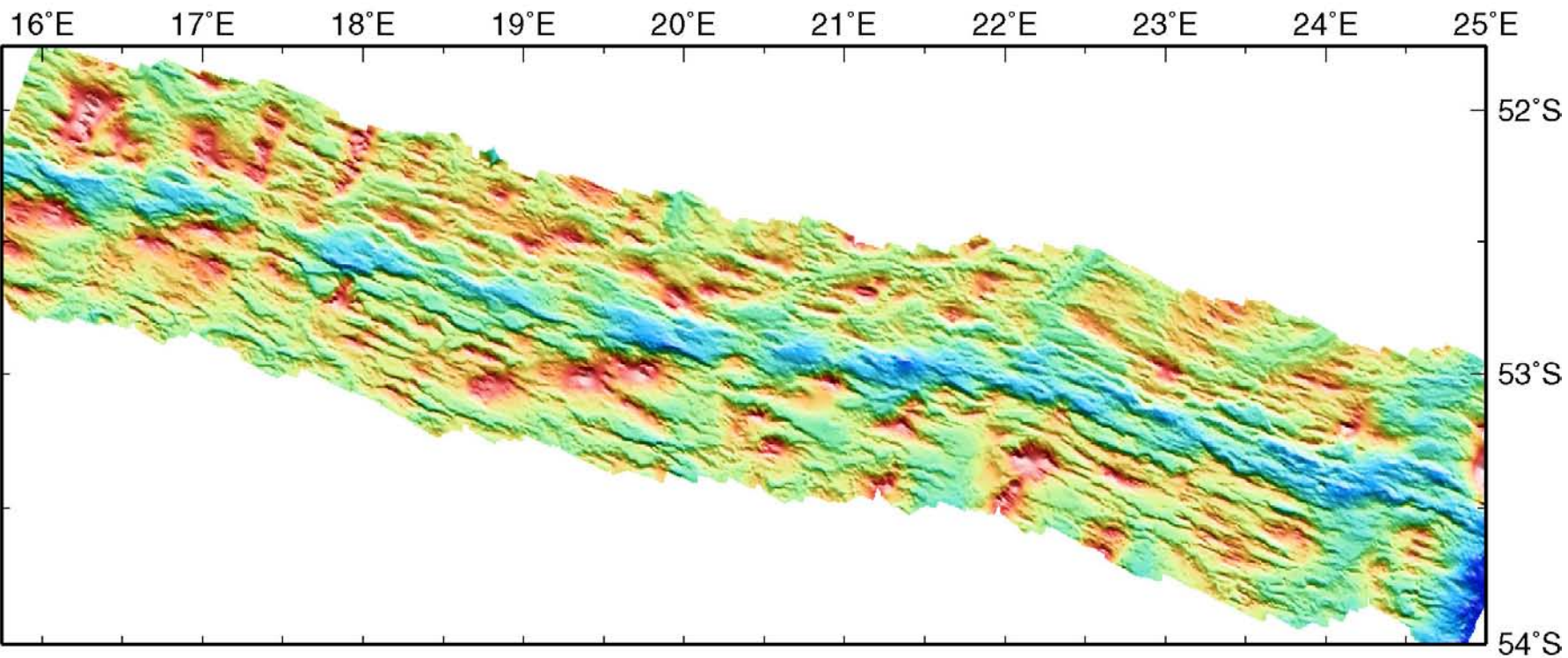
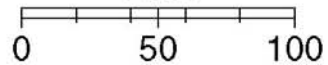




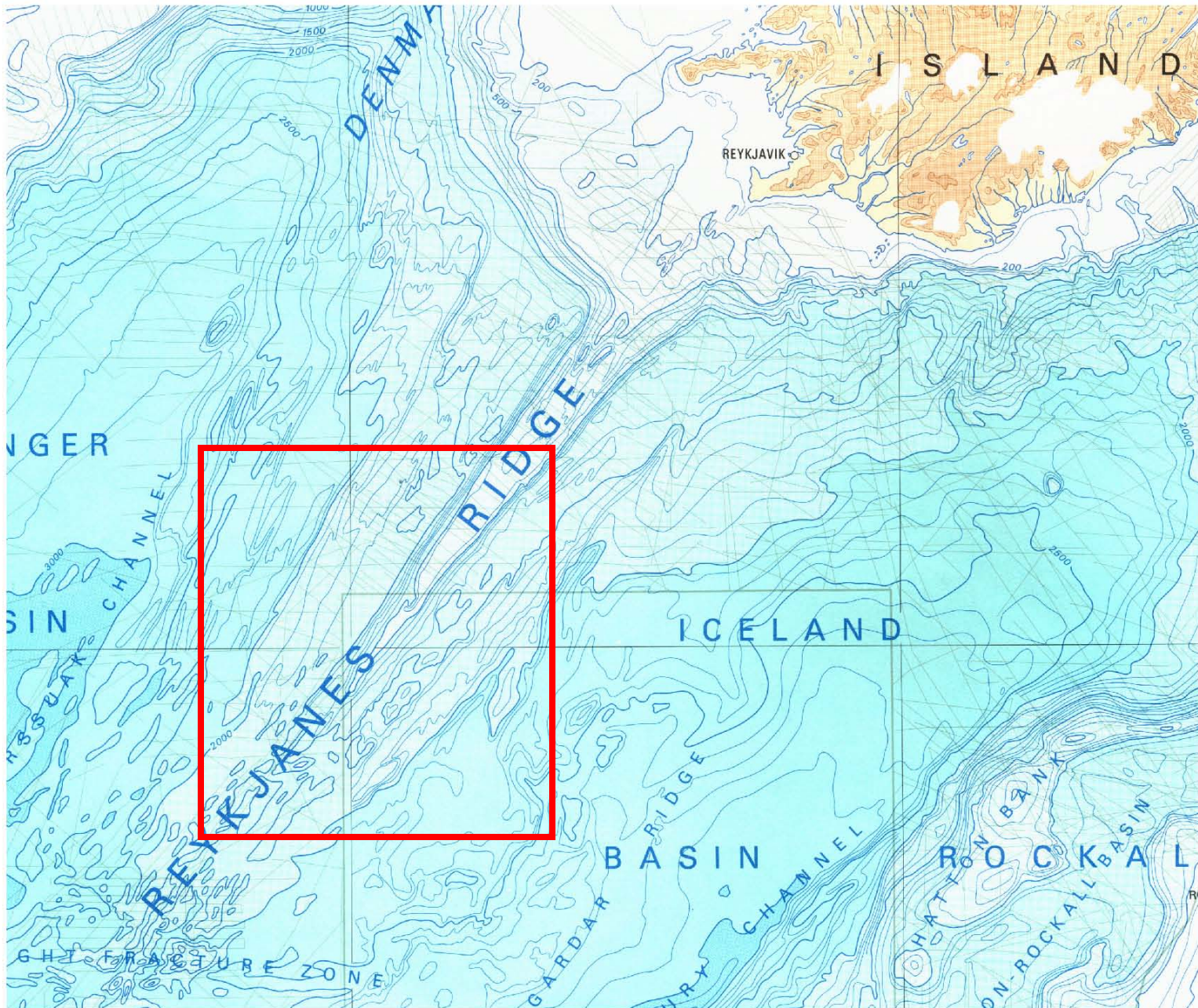
Fisher and Goodwillie, 1997

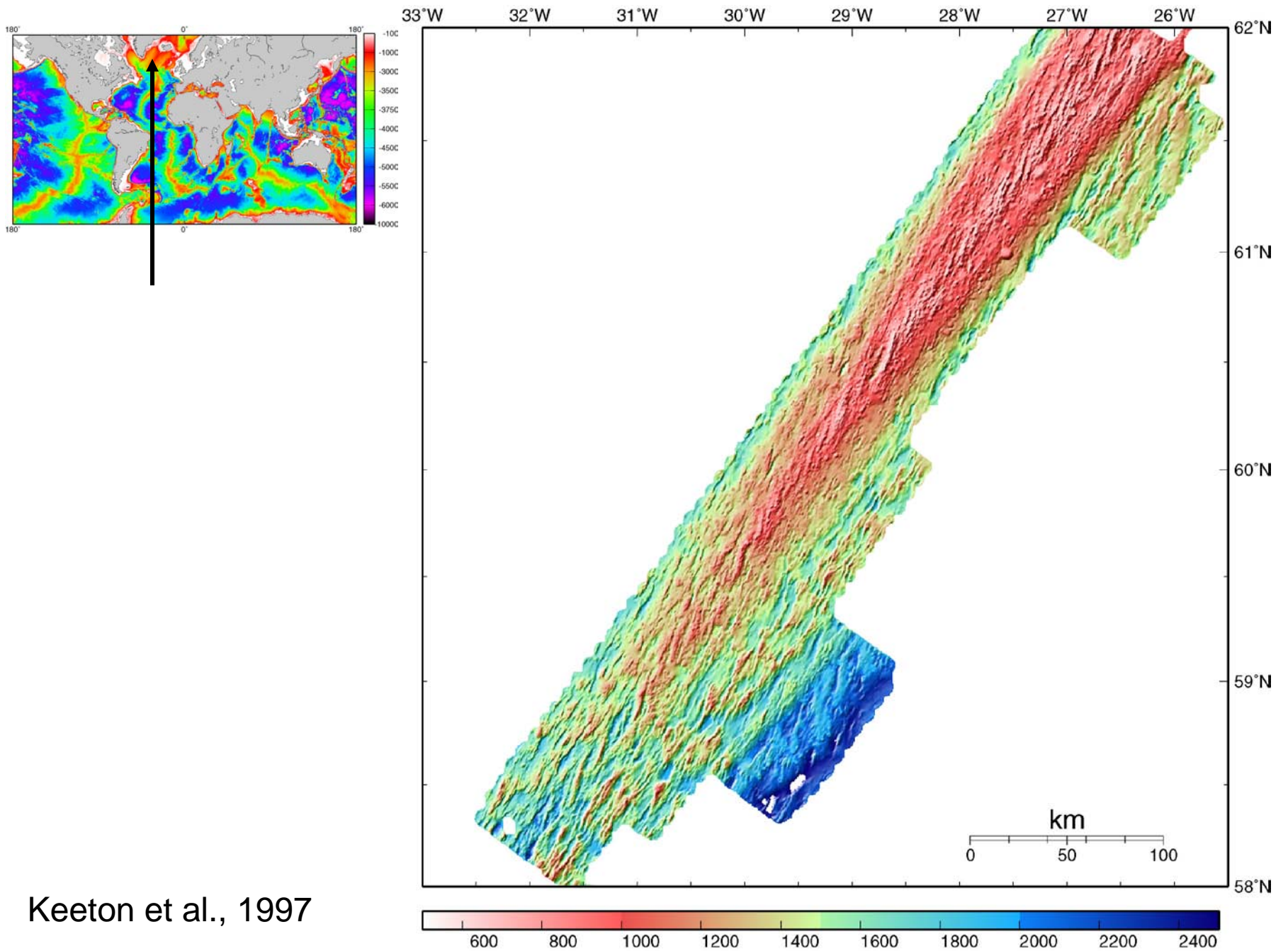


km

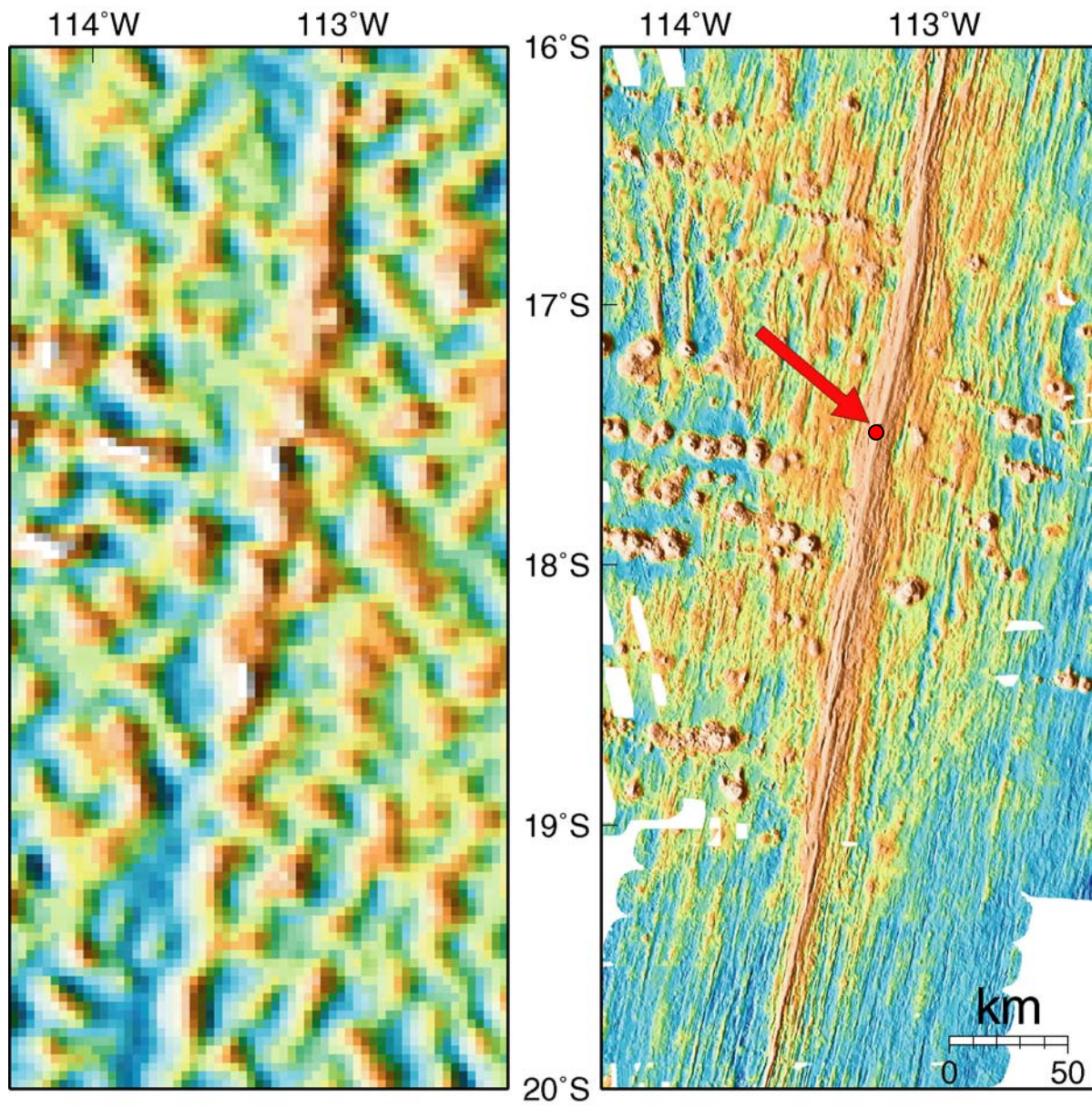


Grindlay et al., 1997

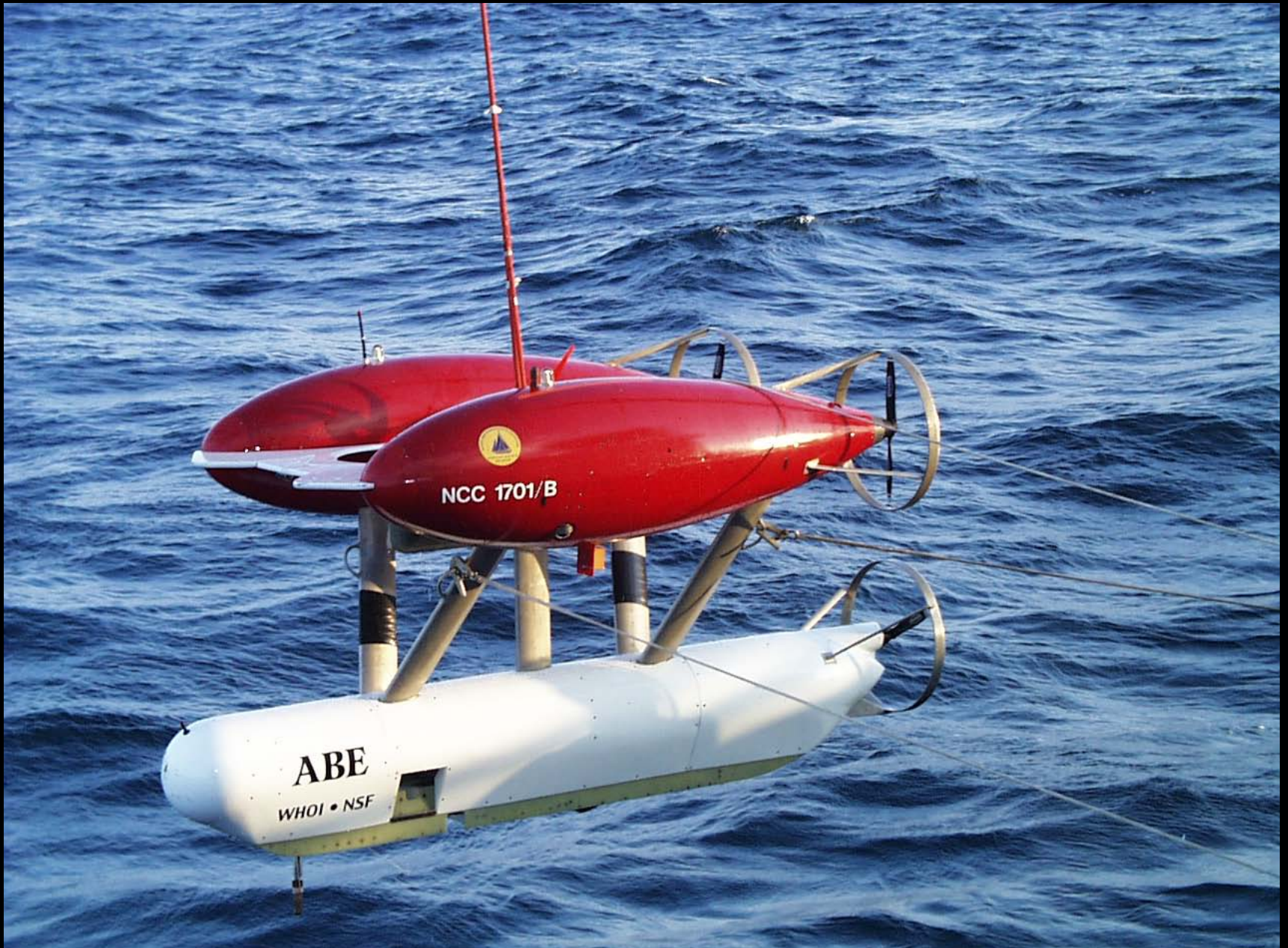




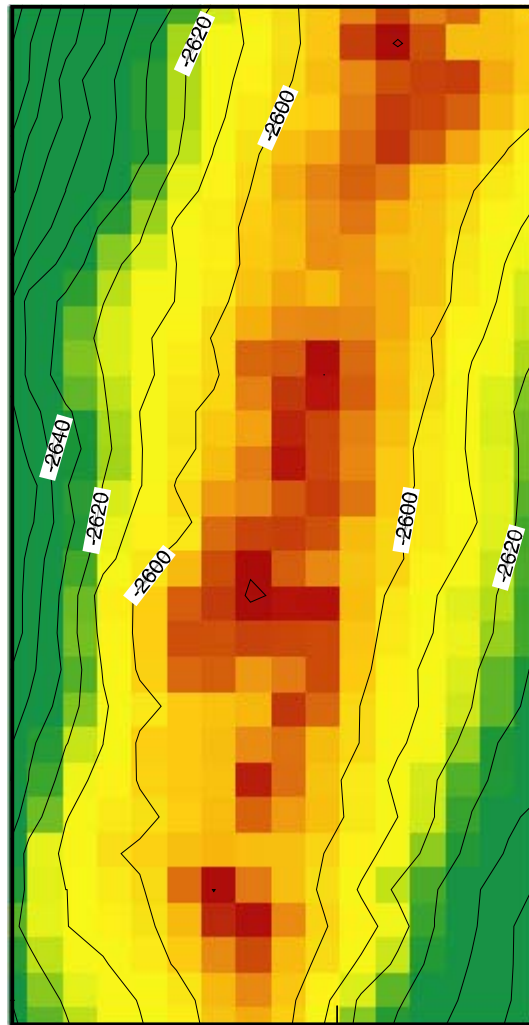
Keeton et al., 1997



autonomous underwater vehicle ABE (WHOI)

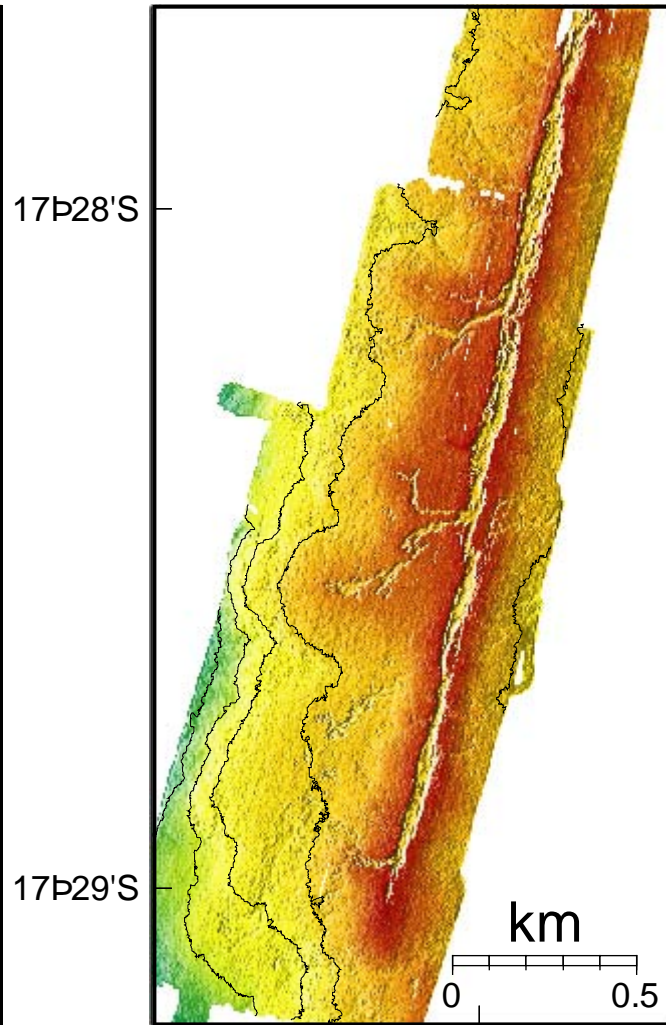


Shipboard bathymetry

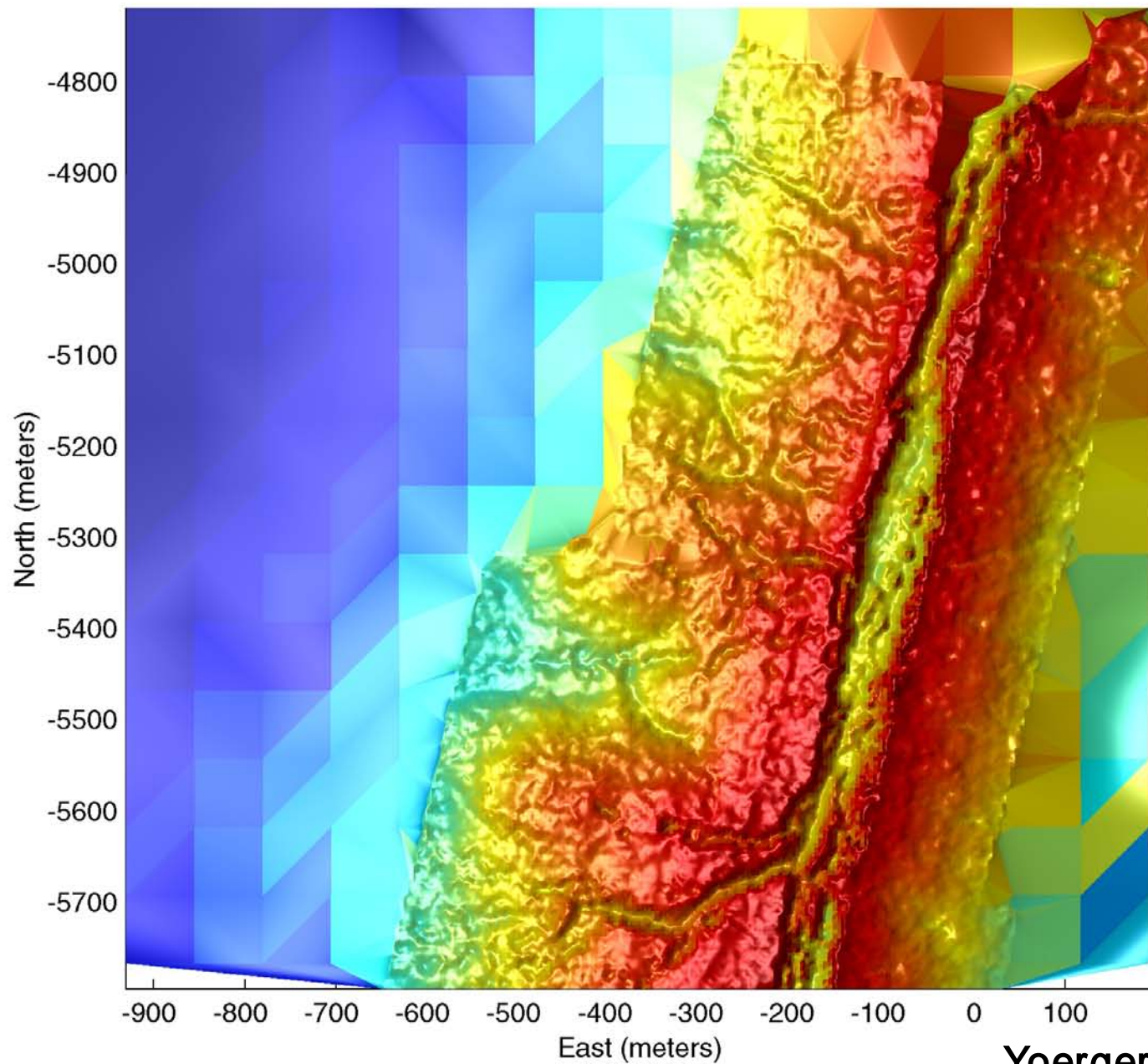


113°13'W

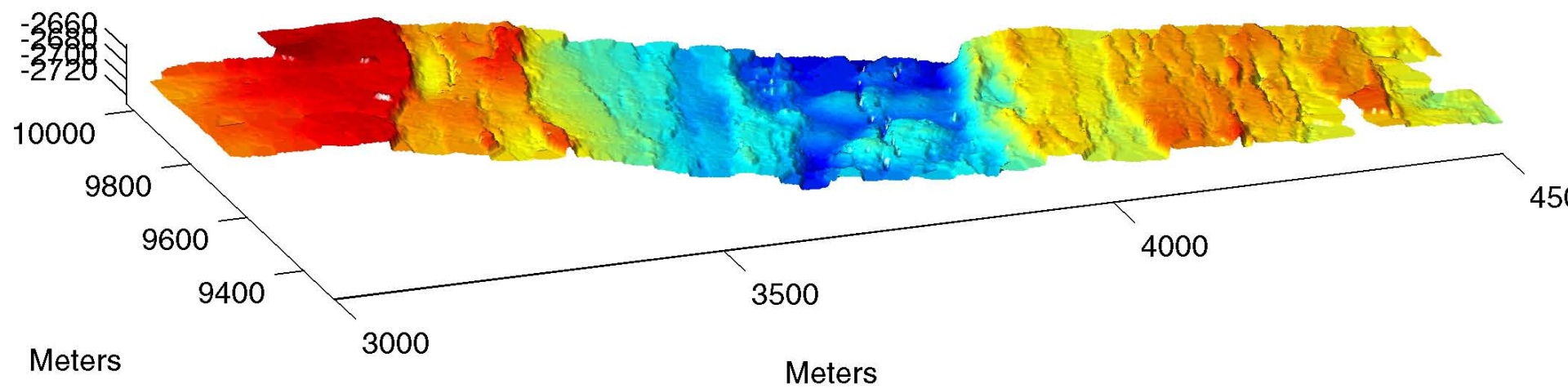
ABE bathymetry



113°13'W



Yoerger et al., 2000





GOAL: To promote an long-term international effort to map with multibeam bathymetry the entire world seafloor

FEASIBILITY: about 20-30 years, \$8-\$16 billion

**32nd International Geological Congress
Florence - Italy
August 20-28, 2004**

**Session T25.02
Seafloor Imaging**