

The Role of Bathymetry in International Maritime Law and in the Provisions of the UN Convention on the Law of the Sea.

Neil Guy

G E B C O

GENERAL BATHYMETRIC CHART OF THE OCEANS



INTERGOVERNMENTAL OCEANOGRAPHIC
COMMISSION

COMMISSION OCEANOGRAPHIQUE
INTERGOUVERNEMENTALE

PARIS



CENTENARY 1903-2003

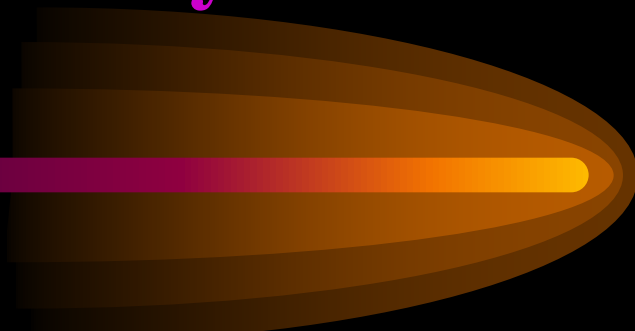


INTERNATIONAL HYDROGRAPHIC
ORGANIZATION

ORGANISATION HYDROGRAPHIQUE
INTERNATIONALE

MONACO

What is Bathymetry



The Science of Measuring
Depths (usually in the Ocean) to
Determine Bottom Topography

Bowditch

Content

- **Data Acquisition**
- **Data Processing**
- **Compliance with Standards**
- **Relationship to Datum**
- **Depiction, Format and Metadata**
- **Distribution and Maintenance**
- **Examples**
- **Responsibilities Legal or Otherwise**
- **Conclusion**

Acquisition and Processing

- **Historical Data**

 - **Acceptance - Quality Assurance?**

 - **National and International Responsibility**

- **New Data**

 - **Methods of Survey - Latest Affordable?**

 - **Data Processing and Maintenance**

- **Duty of Care**

Compliance with Standards

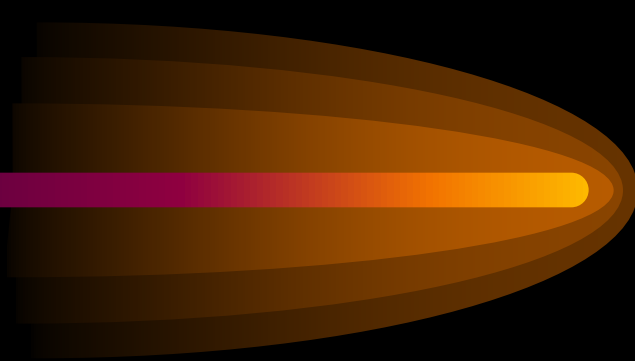
- International or National

Equipment

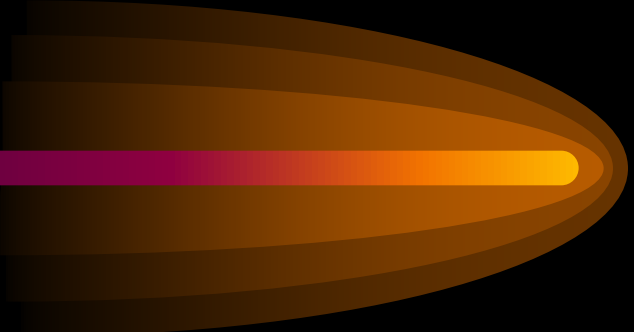
Personnel

Methodology

Products



Relationship to Datum

- Local
 - Regional
 - WGS 84 (GPS?)
- 

Depiction, Format and Metadata

- **User Requirements for Depiction and Format**

Mariner

Paper Charts and Publications

Electronic Products

UNCLOS

Baselines - Normal and Straight

Foot of the Slope

Resources - Exploration and Exploitation

- **Metadata**

Distribution and Maintenance

- **Mariner**

Latest Information

Widest Distribution

Safest Means

**IF YOU HAVE INFORMATION, CONFIRM
IT AND PASS IT.**

Examples

- **Surveying**

Old Surveys

Early Swathe

Modern Equipment

- **Usage**

Charting

UNCLOS





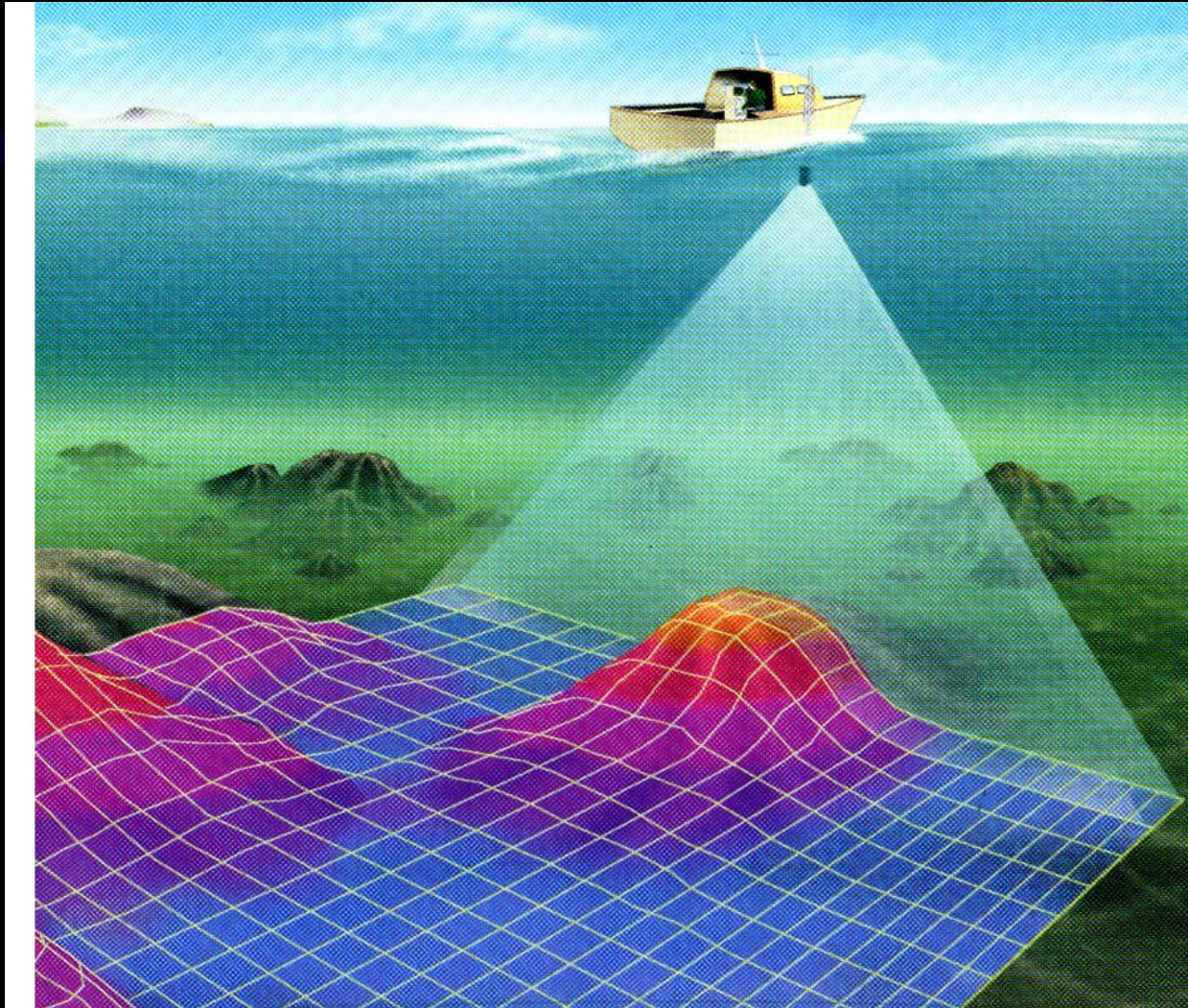
INTERGOVERNMENTAL OCEANOGRAPHIC
COMMISSION
COMMISSION OCEANOGRAPHIQUE
INTERGOUVERNEMENTALE
#4888



CENTENARY 1903-2003

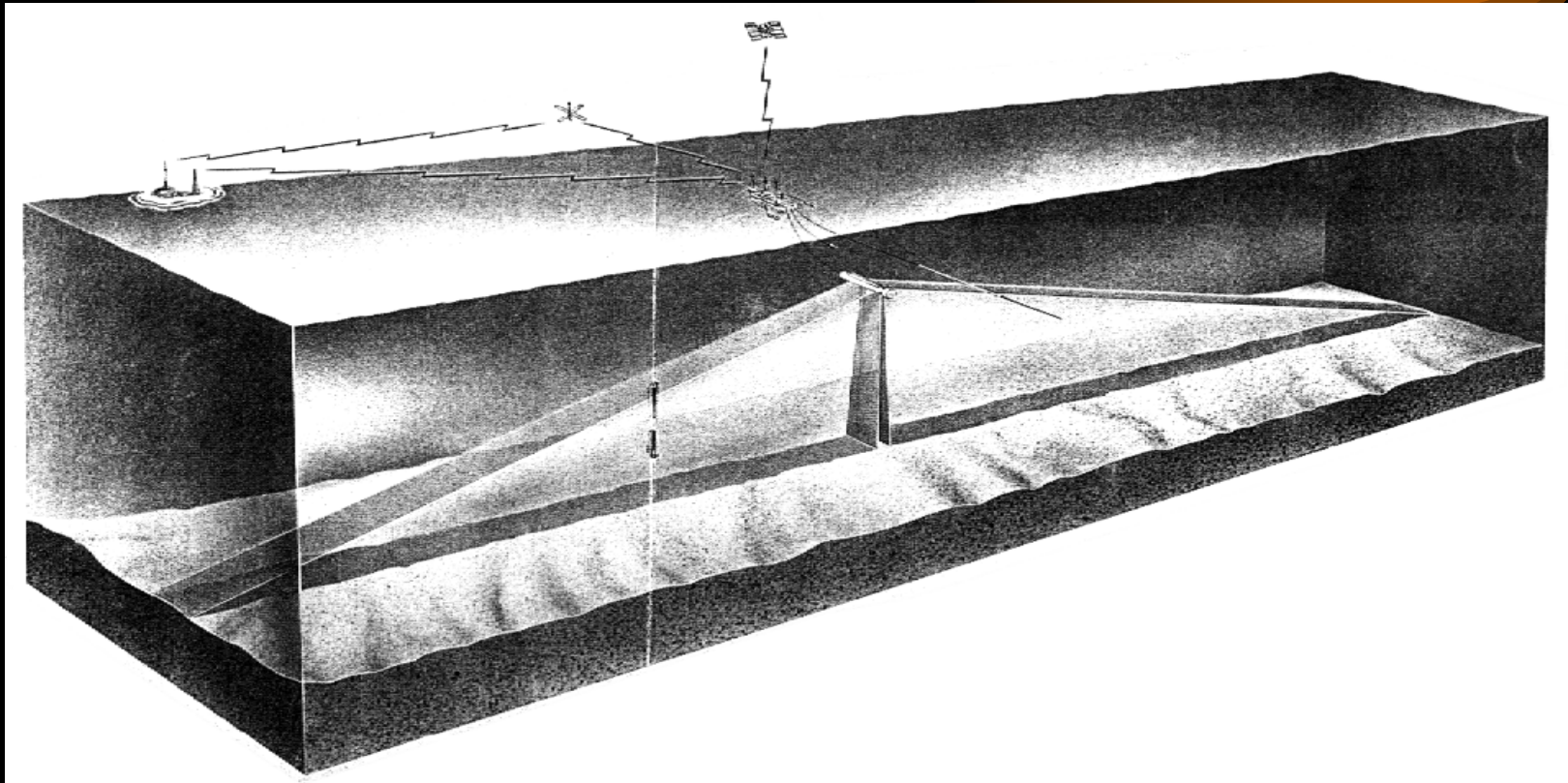


INTERNATIONAL HYDROGRAPHIC
ORGANIZATION
ORGANISATION HYDROGRAPHIQUE
INTERNATIONALE
MONACO

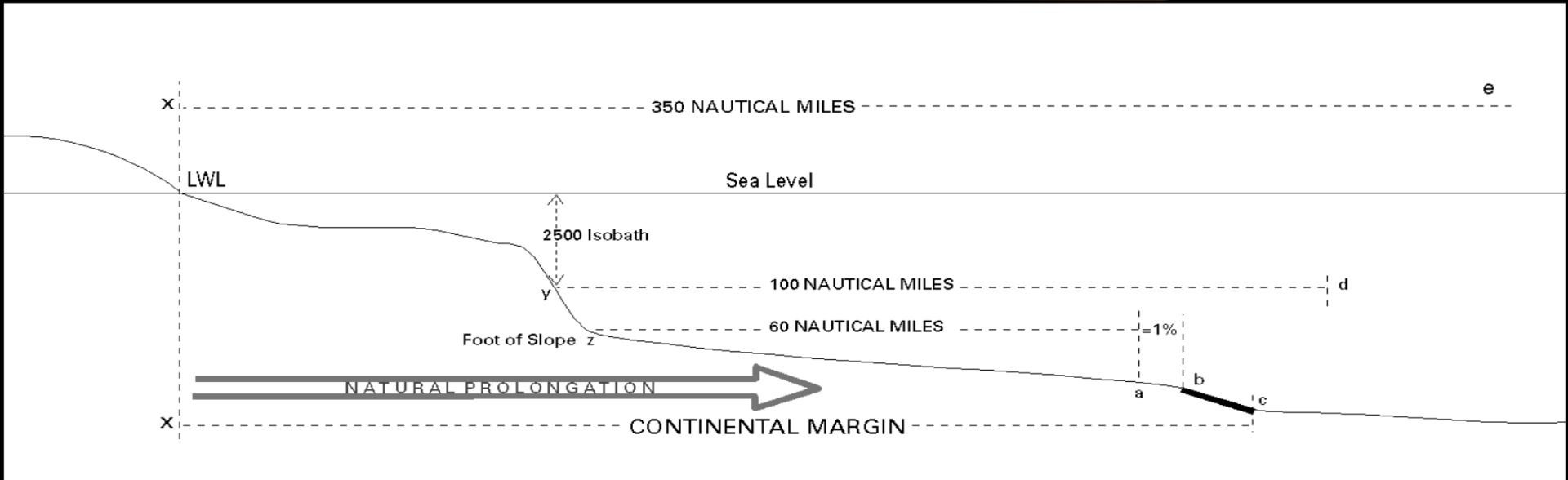




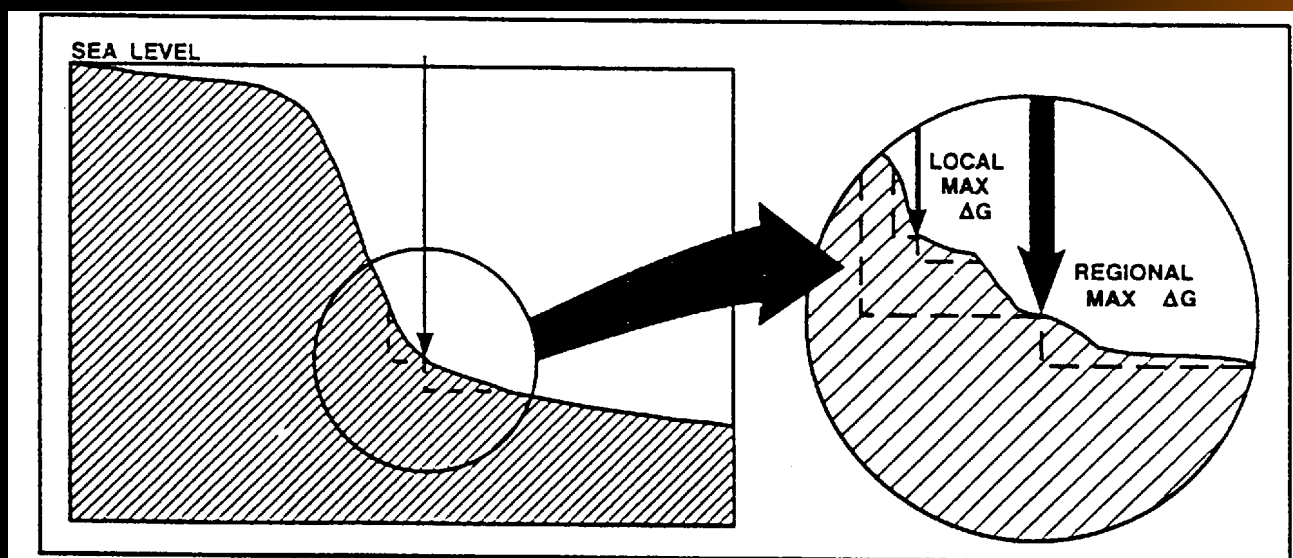
GLORIA



UNCLOS



Foot of the Slope



The foot of the continental slope is defined as the location of the maximum change on bottom gradient. As shown in the enlarged section, this location may vary according to the range over which the gradient is calculated, i.e. the feature may be determined on a local basis (thin arrow) or a regional basis (thick arrow).

Responsibilities

- **Complying with Internationally Accepted Standards**

Duty of Care

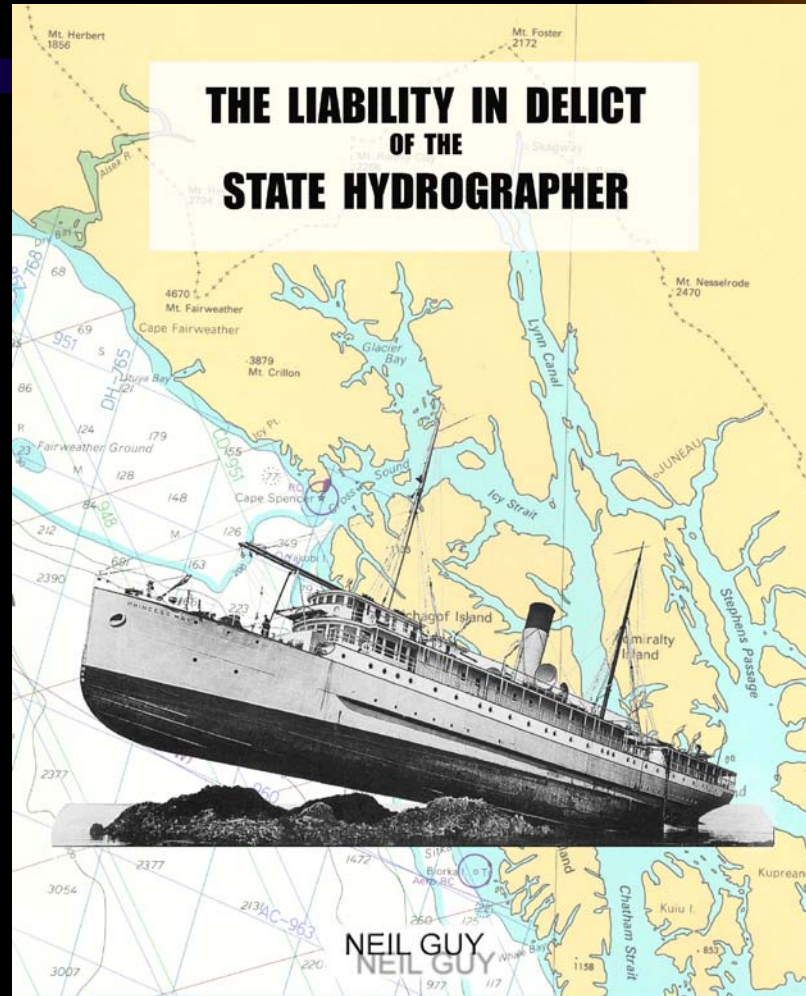
Liability in Delict or Tort

- **Ensuring National Interests**

Maximising Claims

Providing Data for Resources Exploitation

The Hydrographers Nightmare



International Hydrographic Organization



Conclusions

Accurate bathymetry is essential to the production of nautical charts and publications and the legal responsibilities related to this service and accurate bathymetry is essential to the substantiation of the UNCLOS claims of a coastal State to maritime territory and marine resources.

G E B C O

GENERAL BATHYMETRIC CHART OF THE OCEANS



INTERGOVERNMENTAL OCEANOGRAPHIC
COMMISSION

COMMISSION OCEANOGRAPHIQUE
INTERGOUVERNEMENTALE

PARIS



CENTENARY 1903-2003



INTERNATIONAL HYDROGRAPHIC
ORGANIZATION

ORGANISATION HYDROGRAPHIQUE
INTERNATIONALE

MONACO

THANK YOU