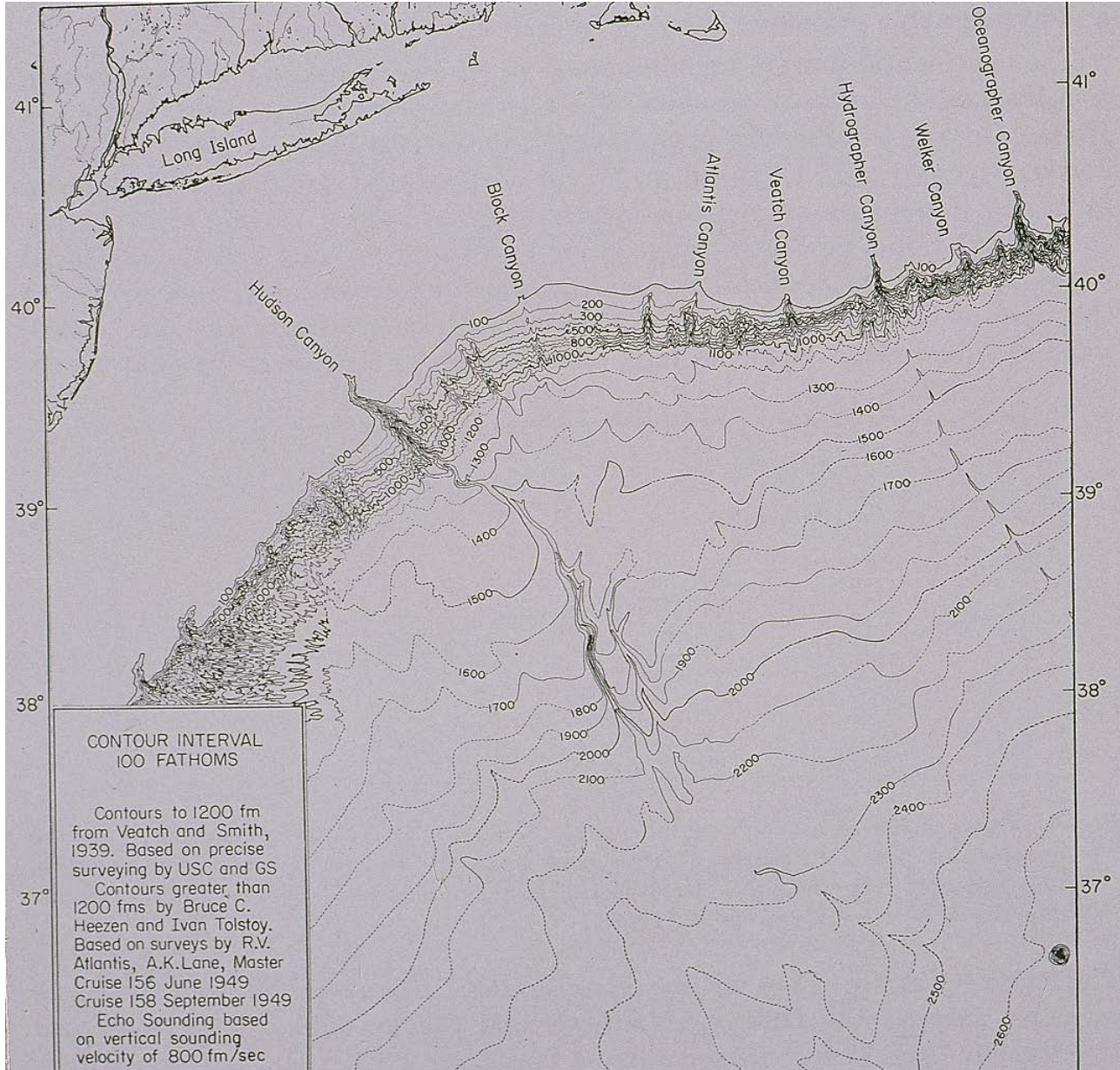


# GEBCO Centenary Conference

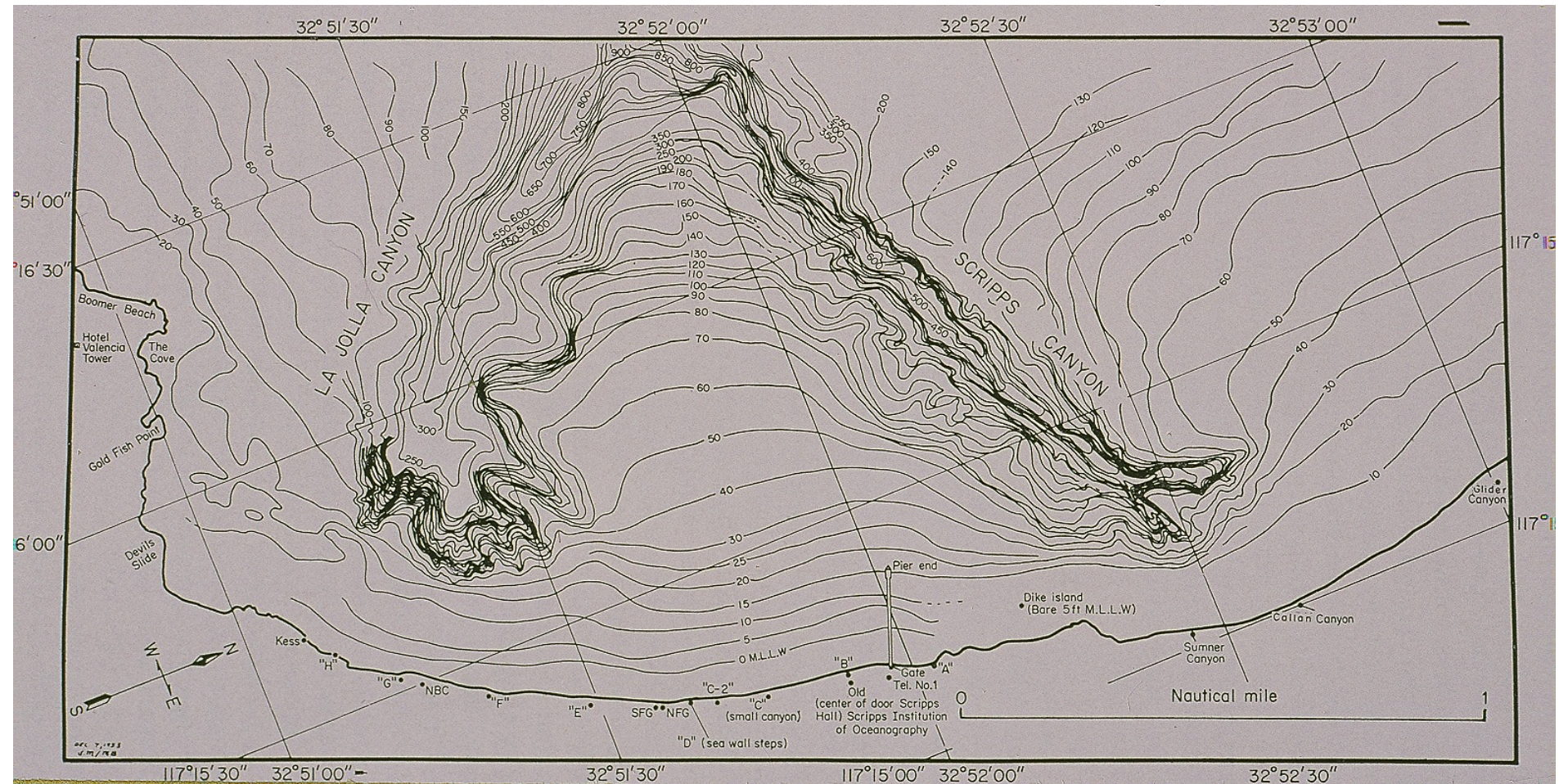
The impact on ocean mapping  
of the post-war revolution  
in marine geology  
and the work of  
SCOR Working Group 41

Anthony S. Laughton





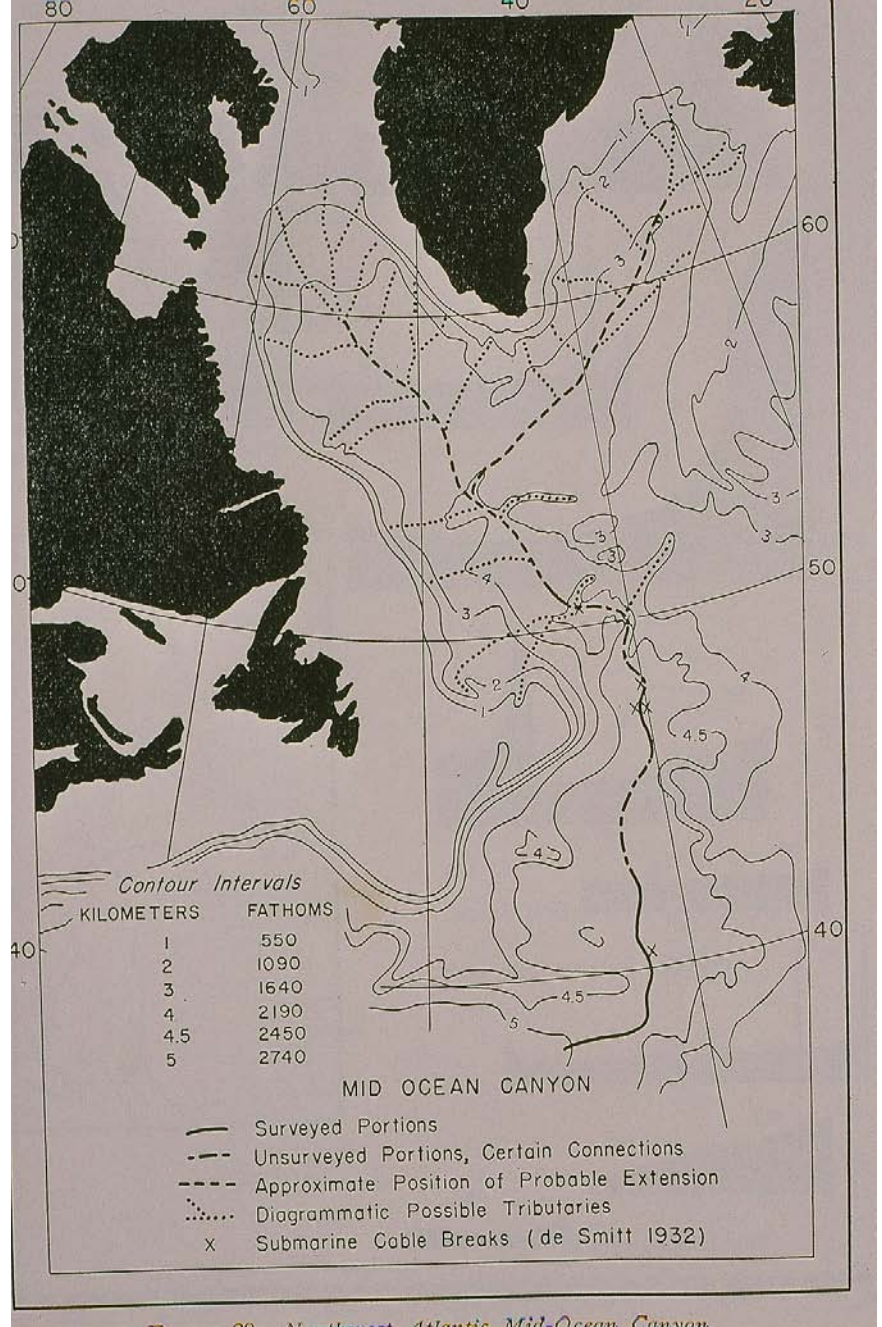
## Hudson Canyon



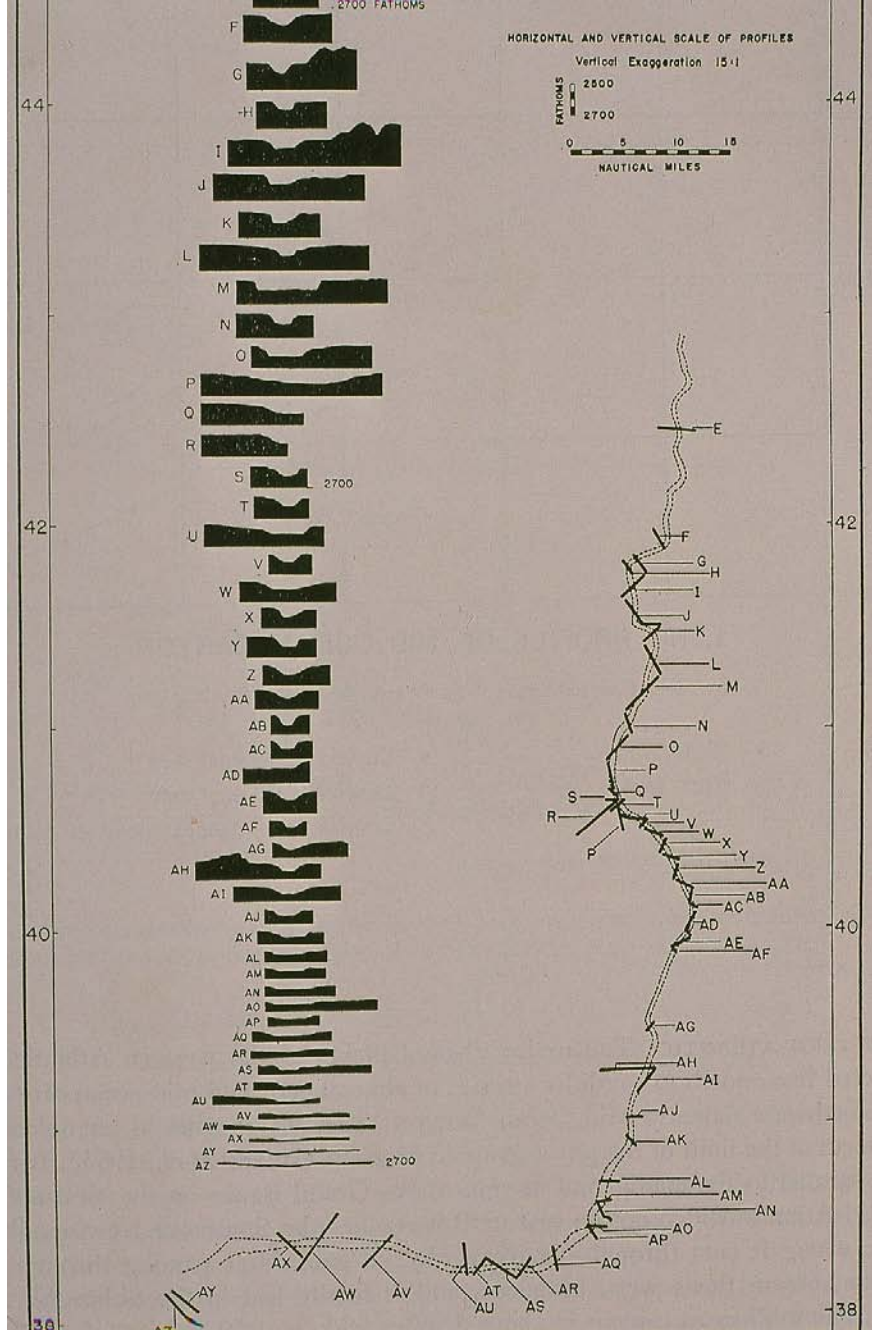
# Scripps and La Jolla Canyon

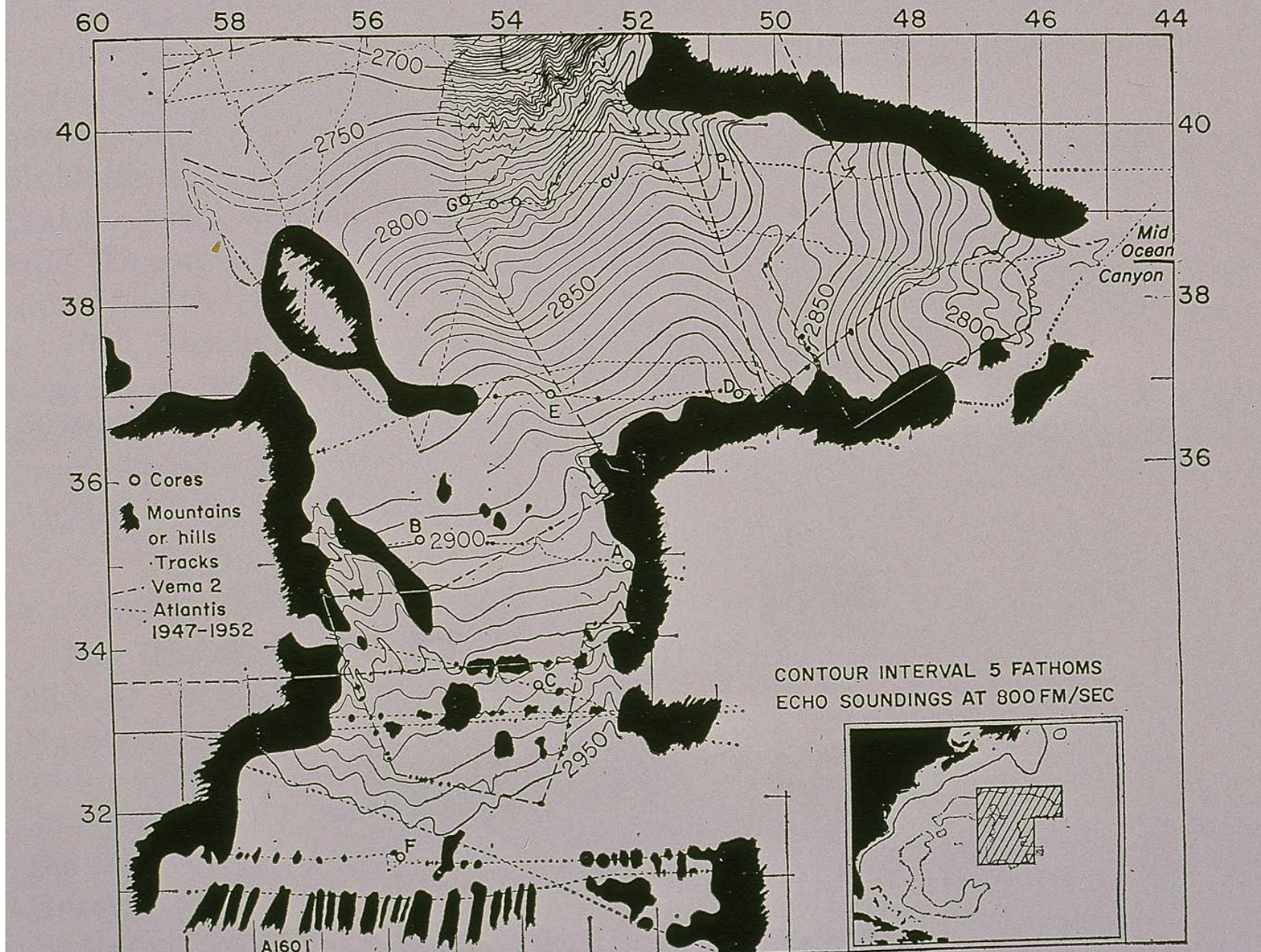


# Mid-ocean channel

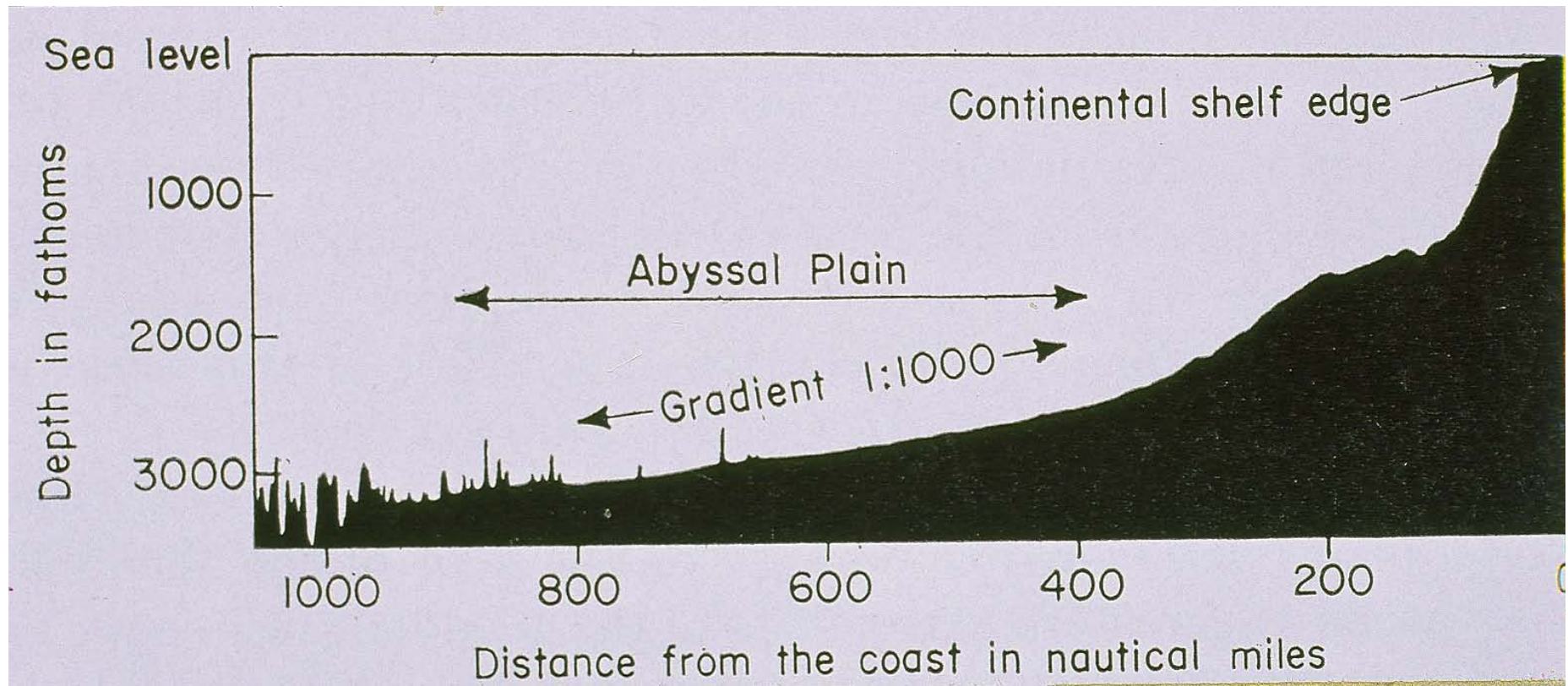


# Sections across mid-ocean channel





## Nares abyssal plain



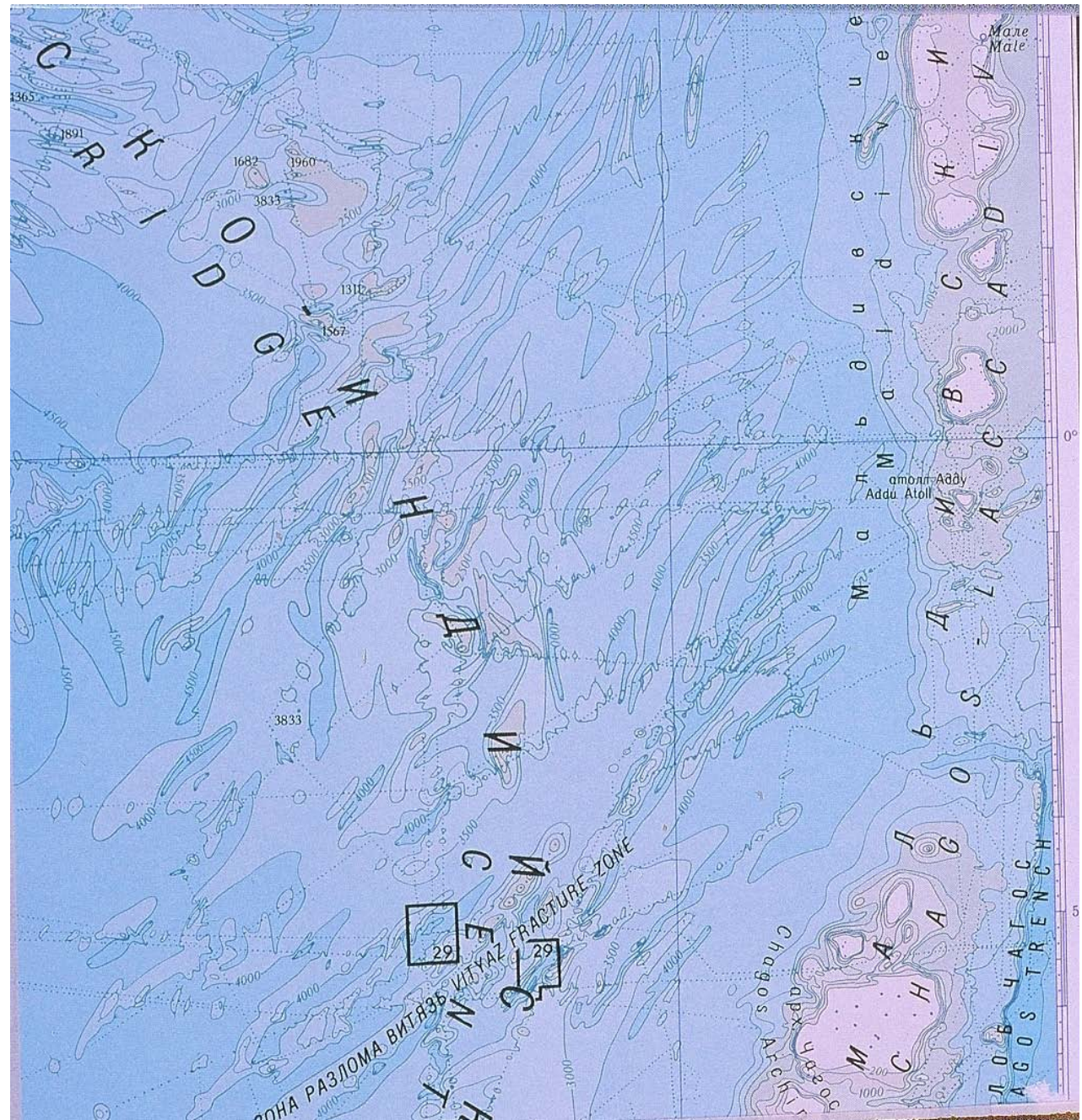
## Section from continental shelf edge to abyssal plain



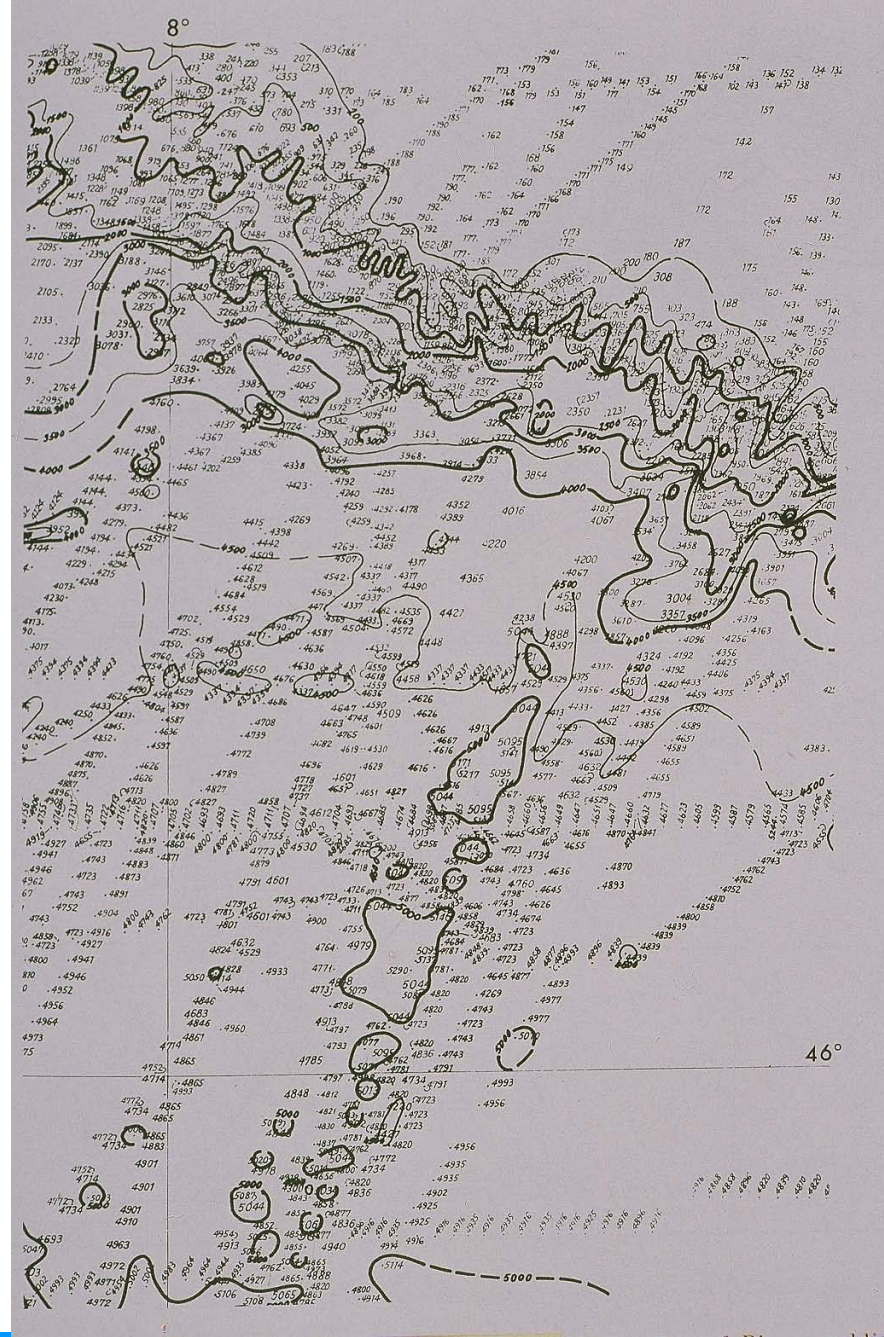
## Bay of Biscay physical diagram



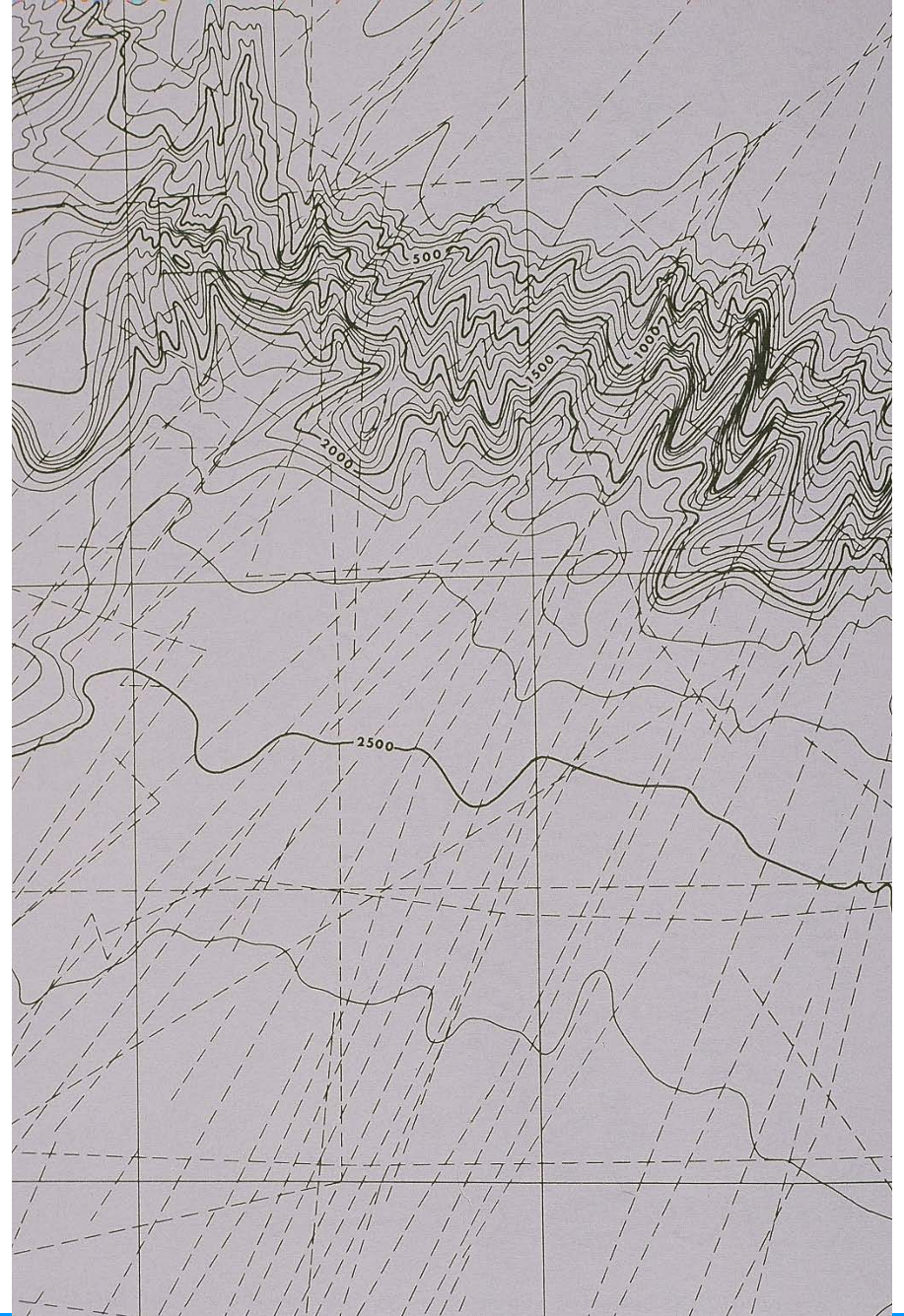
# Fracture zones in central Indian Ocean ridge system



# Bay of Biscay collected soundings as of 1943



# Bay of Biscay contours



# Bay of Biscay GEBCO 4th Edition

