

Error reported in the GEBCO_2020 Grid off the Cape Verde Islands in the Atlantic Ocean (24.5°W, 16.5°N)

Two areas of anomalously shallow depth values have been reported in the area off the Cape Verde Islands. This appears to be due to errors in a source data set used to develop the grid in this area.

An image of the GEBCO_2020 Grid for this region, colour-coded for depth, is shown below (figure 1a). Figure 1b shows the coverage of the Type Identifier (TID) Grid for the region, indicating which of the corresponding cells in the bathymetric grid are constrained by measured data or pre-generated grids and which are based on interpolation.

For further information about the GEBCO_2020 Grid, visit GEBCO's web site:

https://www.gebco.net/data_and_products/gridded_bathymetry_data/

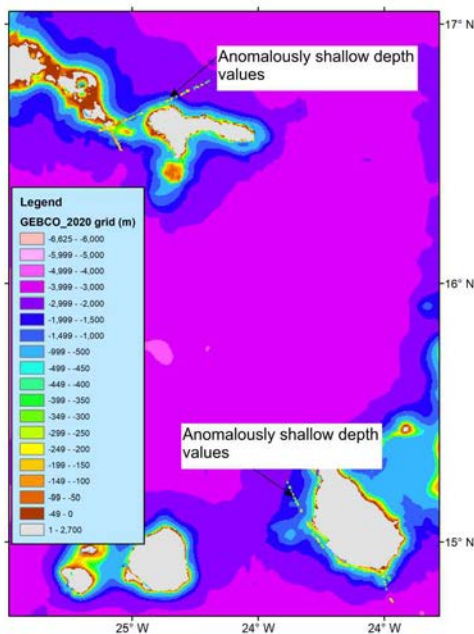


Figure 1a. GEBCO_2020 Grid

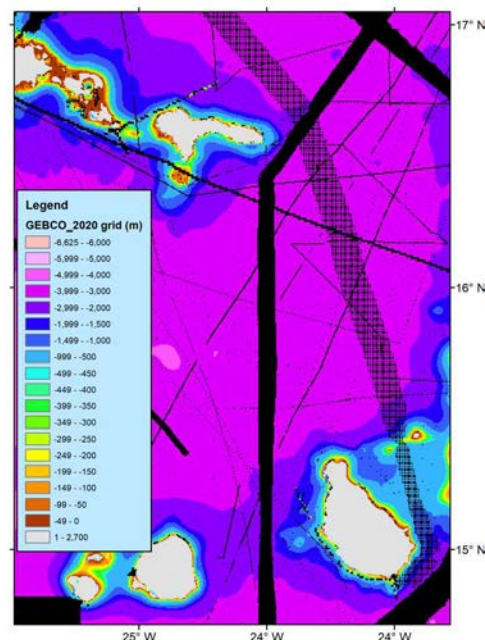


Figure 1B. GEBCO_2020 Grid overlain by the TID Grid - shown in black