

Error reported in the GEBCO_2020 and GEBCO_2019 Grids off the Coast of Massachusetts and Rhode Island, USA (71.5°W, 41.5°N)

In the coastal region off Massachusetts and Rhode Island, USA, the gebco grids show erroneous areas of bathymetry data that should be represented as land. This is illustrated in the image below.

For further information about the GEBCO_2020 Grid, visit GEBCO's web site:

https://www.gebco.net/data_and_products/gridded_bathymetry_data/

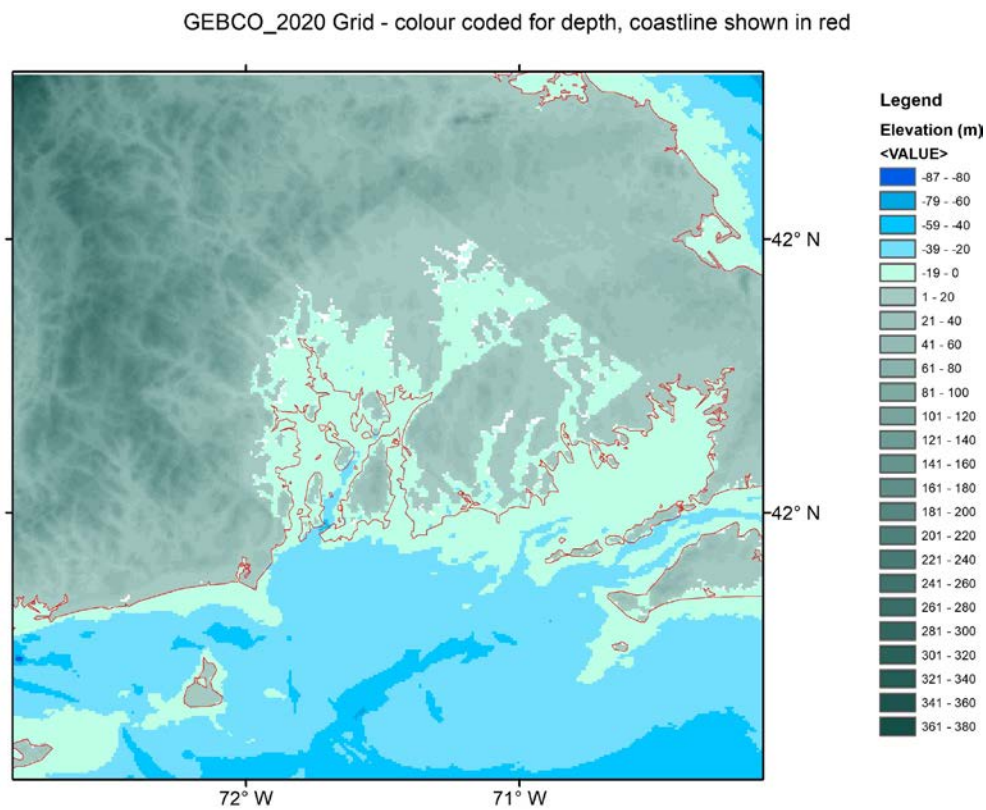


Figure 1. GEBCO_2020 Grid in the region off Massachusetts/Rhode Island, USA