

Error reported in the GEBCO_2020 Grid in the Caribbean Sea region off the northern part of La Guajira region, Colombia

An area of land is erroneously coded as bathymetric depths in the Caribbean Sea region off the northern part of La Guajira Department, Colombia (72°W; 12° 30'N)

The images below illustrate this issue. Further details about the GEBCO_2020 Grid can be found at: www.gebco.net/data_and_products/gridded_bathymetry_data/gebco_2020/

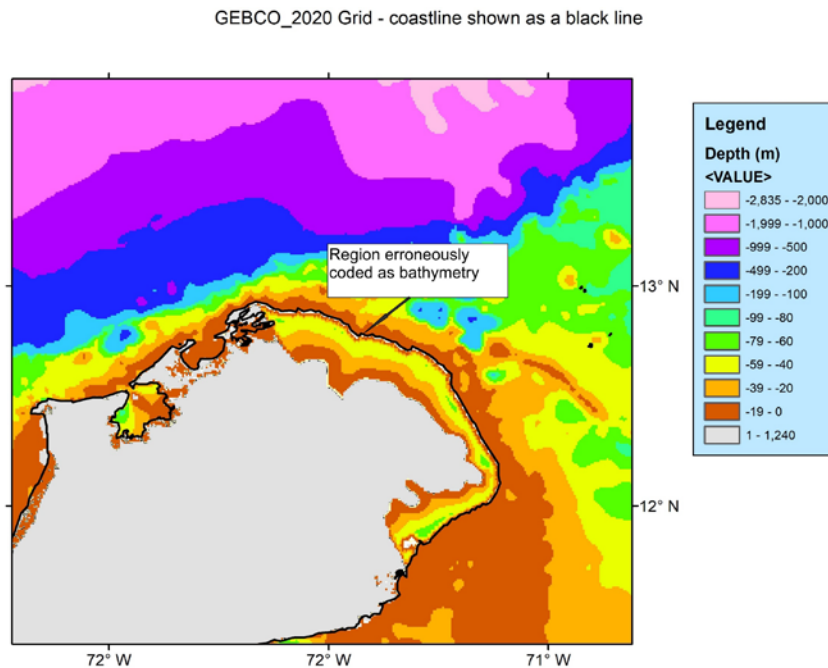


Figure 1. The GEBCO_2020 Grid colour-coded for elevation – the area of land erroneously coded as bathymetry data is highlighted.