

GEBCO_08 Grid artifact in the southern North Sea region

In the shallower water areas of the southern part of the North Sea the bathymetry data in the GEBCO_08 Grid appears to show a horizontal and vertical line 'grid' structure. This is shown in figure 1, below.

This is artificial texture and is an artifact created during the generation of the grid.

The GEBCO_08 Grid has been generated by combining measured depth data (collected by ships) with satellite-derived depth estimates in regions where measured data are not available. In general, the data sets blend well together.

However in some areas, as in the southern part of the North Sea, this is not always the case. What you are seeing in these areas is a broad background of estimated depth with specific measured soundings along survey lines appearing as intersecting lines. The two don't blend exactly because the survey lines can show more detail.

The GEBCO_08 Grid is accompanied by a Source Identifier (SID) grid. This shows which cells in the GEBCO_08 Grid have been constrained by bathymetry data and which have been interpolated.

Figure 2 shows data from the SID file (shown as black dots/lines) overlain on the GEBCO_08 Grid.

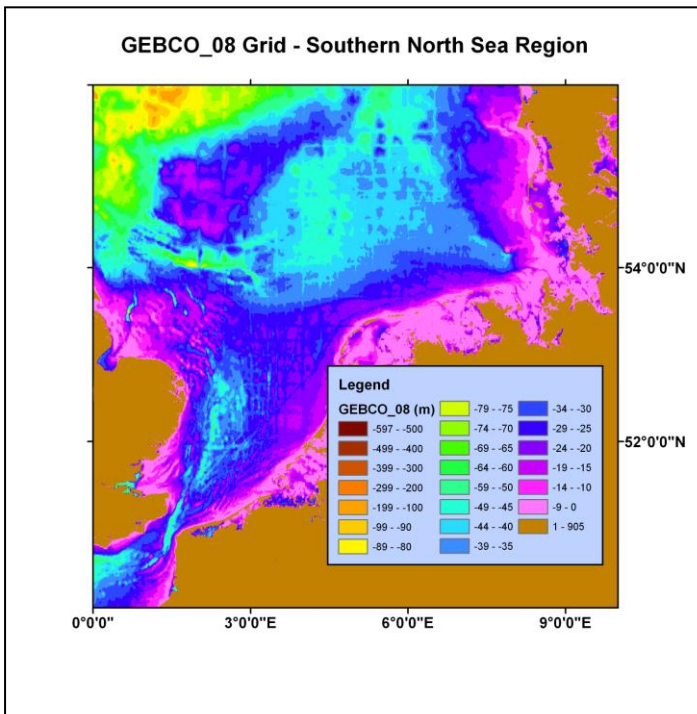


Figure 1

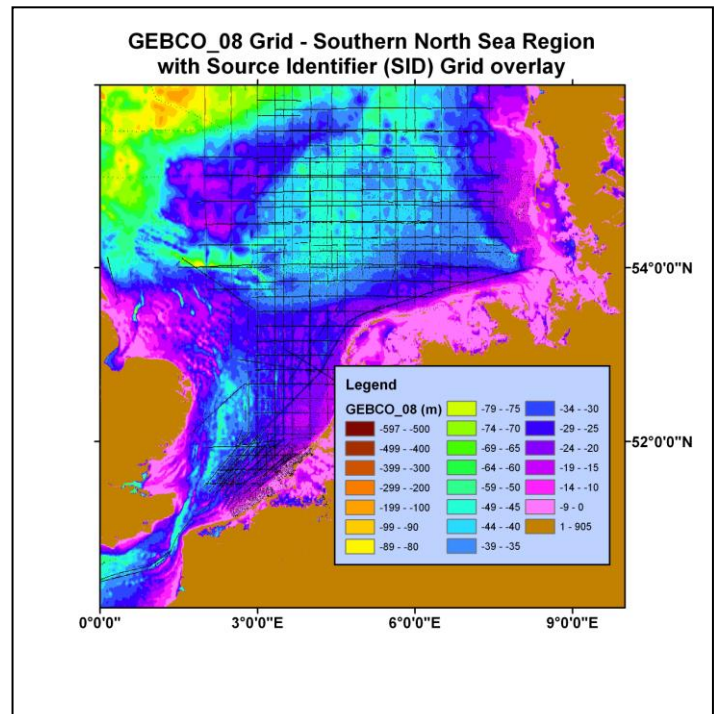


Figure 2