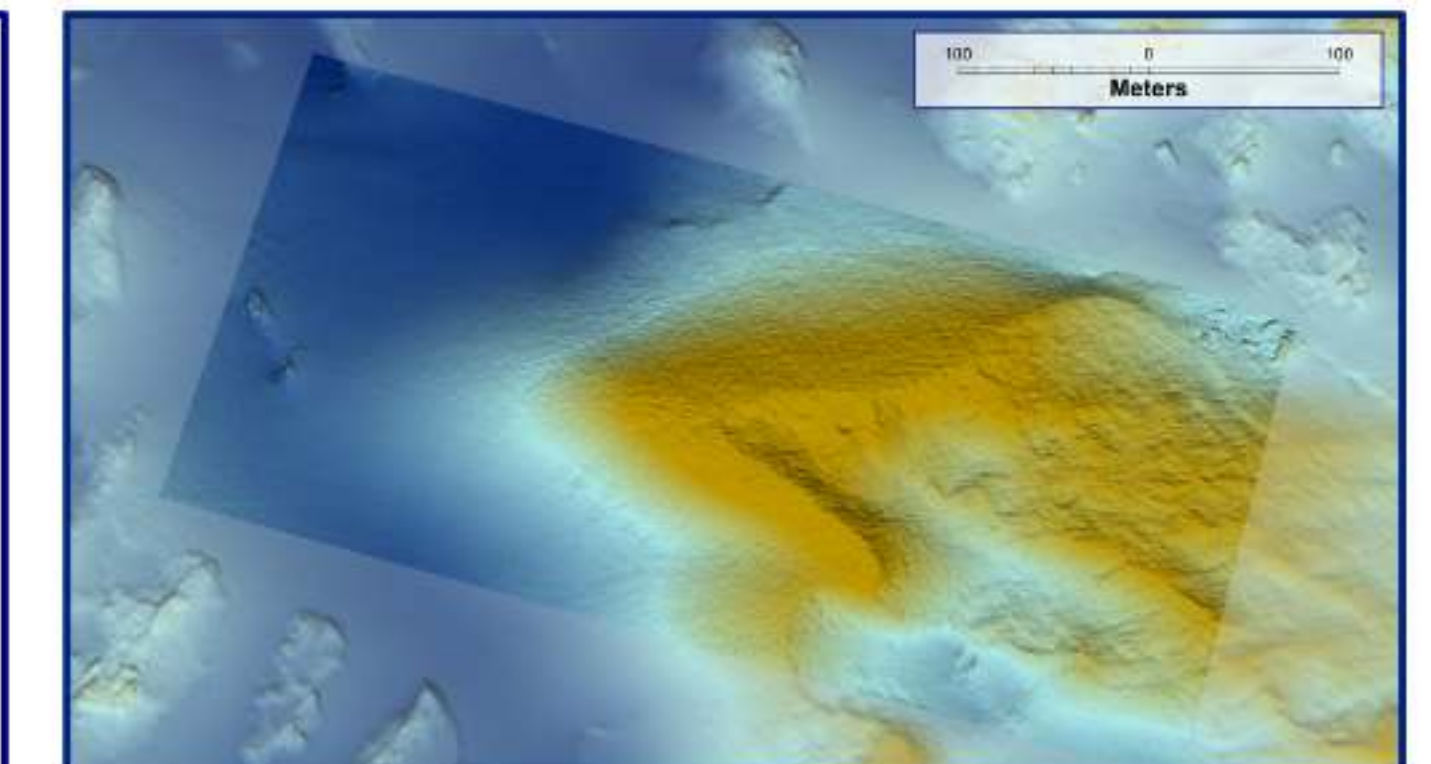
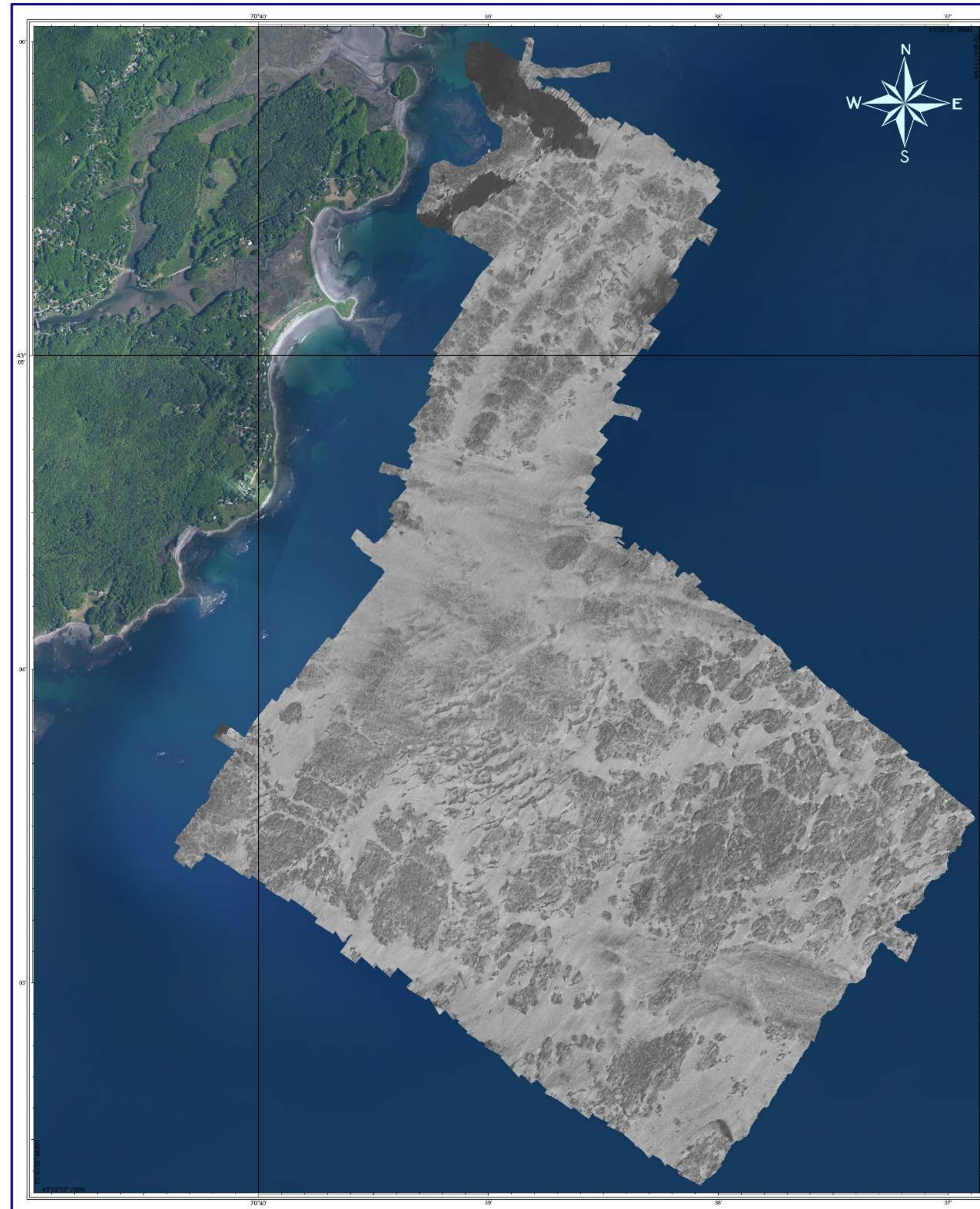
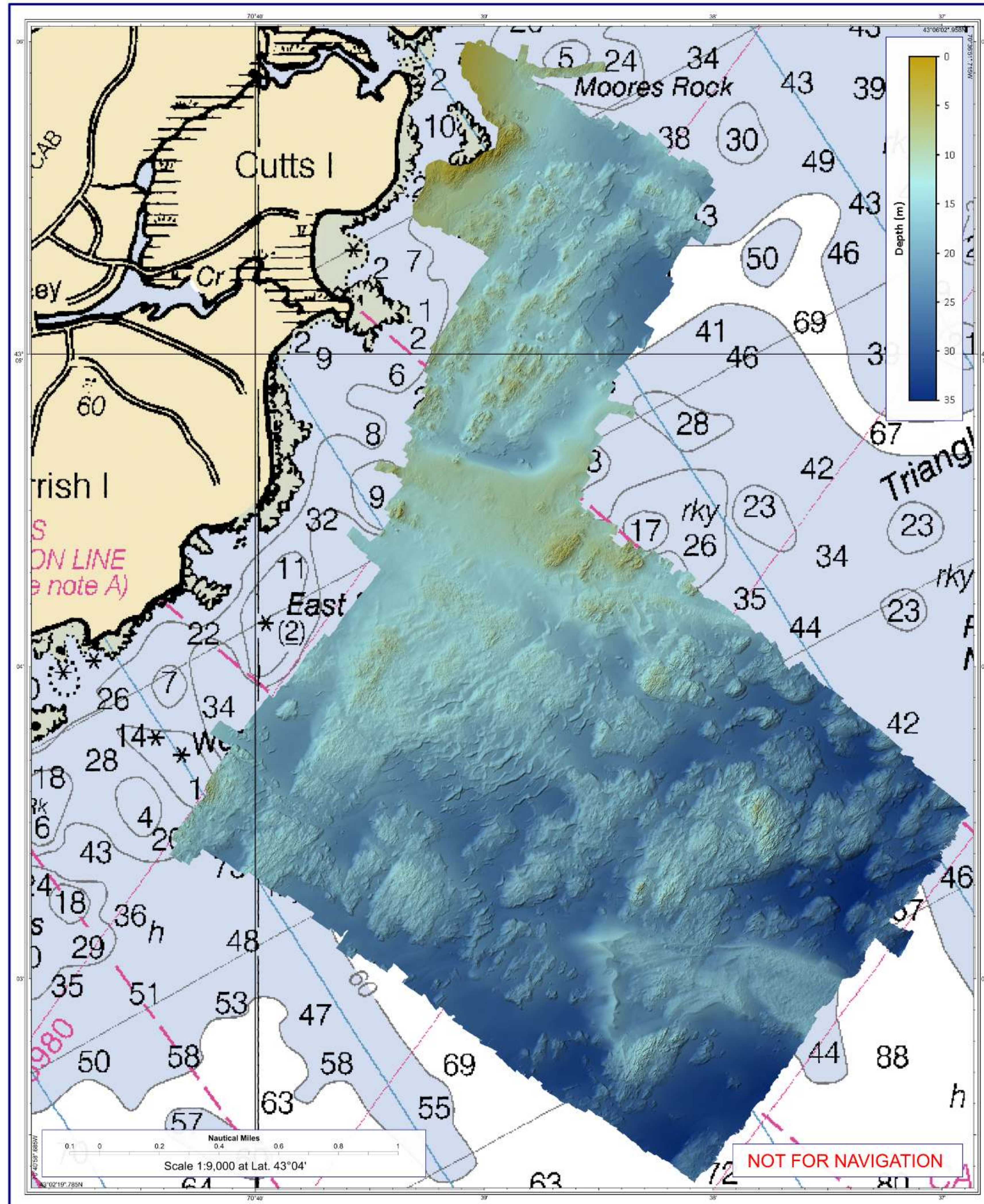


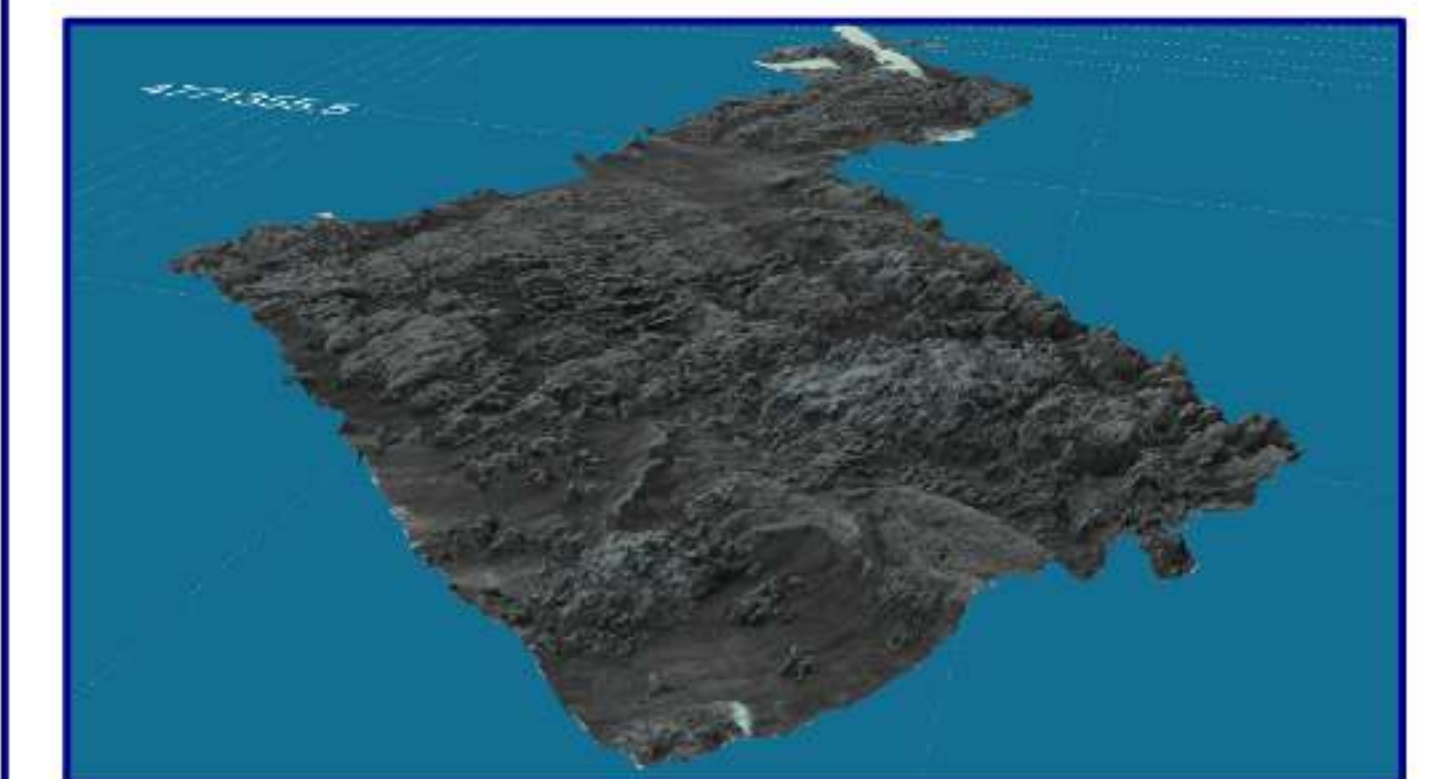


CCOM-JHC Summer Hydro 2012: A High-Res Survey Under 12 Flags

Funding Provided by NOAA Grant: #NA10NOS4000073 - Faculty/Vessel Personnel: A. Armstrong (USA), S. Dijkstra (The Netherlands), B. Smith (USA), E. Terry (USA)
 Survey Team: A. Berry (UK), Y. Cezairli (Turkey), M. Chowdhury (Bangladesh), C. Englert (USA), P. Gunasinghage (Sri Lanka), X. Guo (China), N. Hassan (Malaysia), G. Masetti (Italy), H. Minami (Japan), T. Nguyen (Vietnam), S. Thein (Myanmar), B. Welton (USA), M. Wilson (USA)



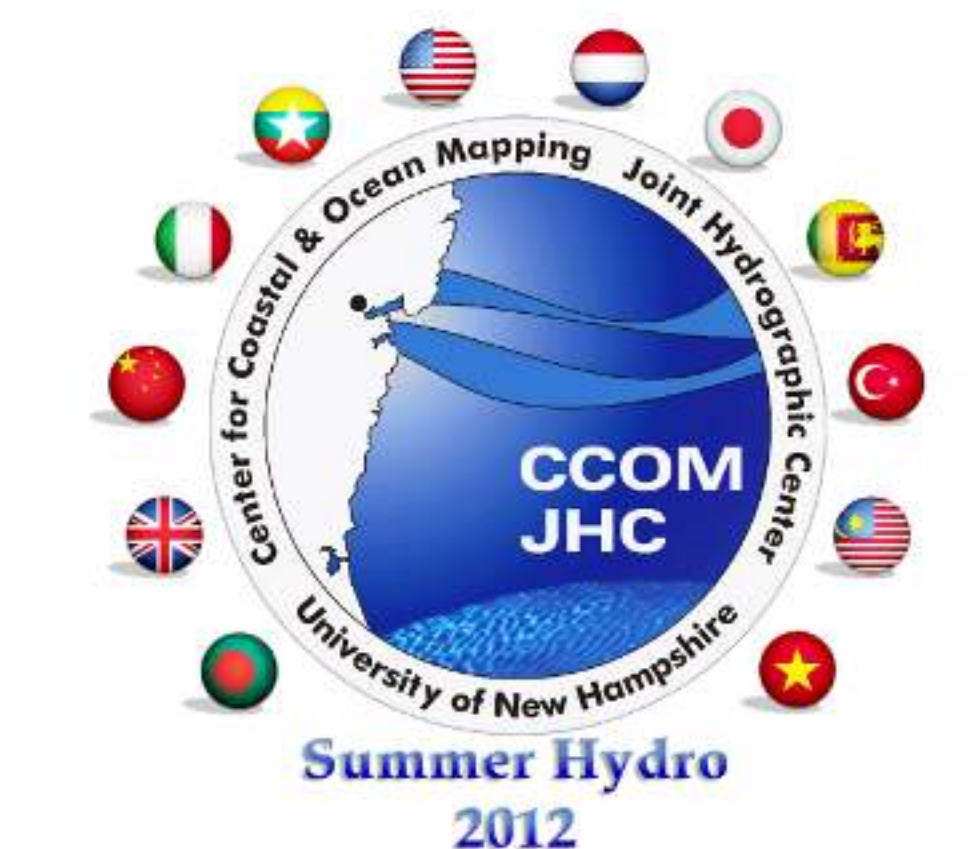
3D View - SE view of backscatter mosaic (0.2 m resolution, light color = low backscatter) draped on CUBE surface at 1-m resolution and 5x vertical exaggeration. UTM 19N.



3D View - SE view of backscatter mosaic (0.2 m resolution, light color = low backscatter) draped on CUBE surface at 1-m resolution and 5x vertical exaggeration. UTM 19N.



York Harbor - CUBE surface at 0.5-m resolution. UTM 19N, Scale: 1:4,000. Background: 2011 NOAA ortho-rectified mosaic of Maine: Cutts Island to Prouts Neck.



Survey Area: Vicinity of Gerrish Island, Maine (197 NM, 4 NM²)
Horizontal Datum: WGS84. **Acquisition Systems:** MBES: Kongsberg EM2040
 RTK Positioning: Trimble 5700. **Attitude:** Applanix 320 V4 POS/MV.
Left pane: CUBE surface at 1-m resolution and 3x vertical exaggeration created using CARIS HPS 7.1.2. **Transparent surface** is 1-m resolution BAG surface based on Summer Hydro 2006.
Depths: in meters at MLLW, Mercator Projection, Scale: 1:9,000.
Background: NOAA RNC 13278 (ed. October 2009) with depths in feet at MLLW.
Central pane: Backscatter mosaic at 0.3-m resolution created using IVS 3D Fiedermaus Geocoder Toolbox 7.3.2 (dark colors = low backscatter).
 Mercator Projection, Scale: 1:9,000.
Background: 2011 NOAA ortho-rectified mosaic of Maine: Cutts Island to Prouts Neck.