



International Bathymetric Chart of the Arctic Ocean (IBCAO)

Version 3.0: Released Spring 2012

What is happening next?

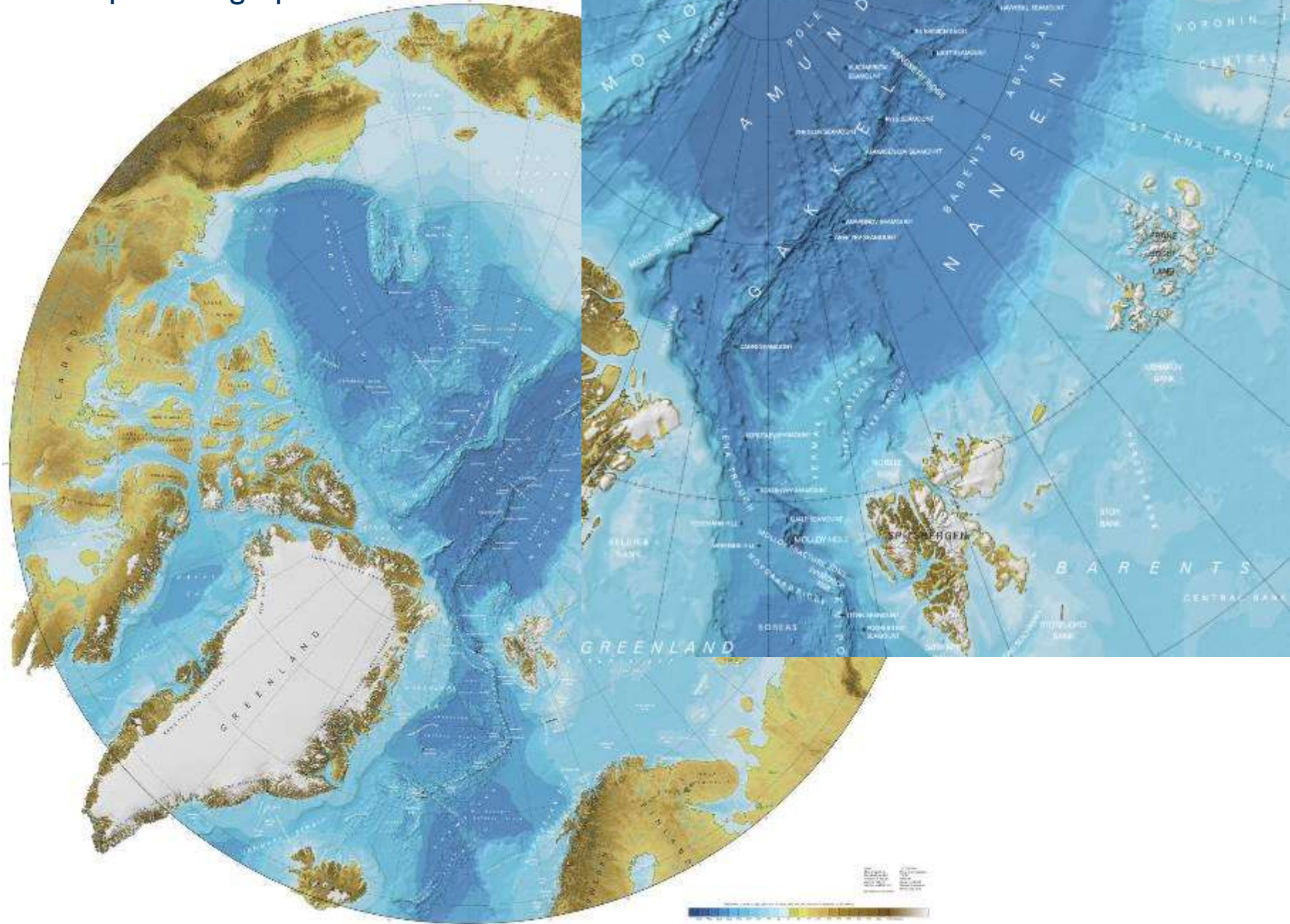
IBCAO Compilation Team



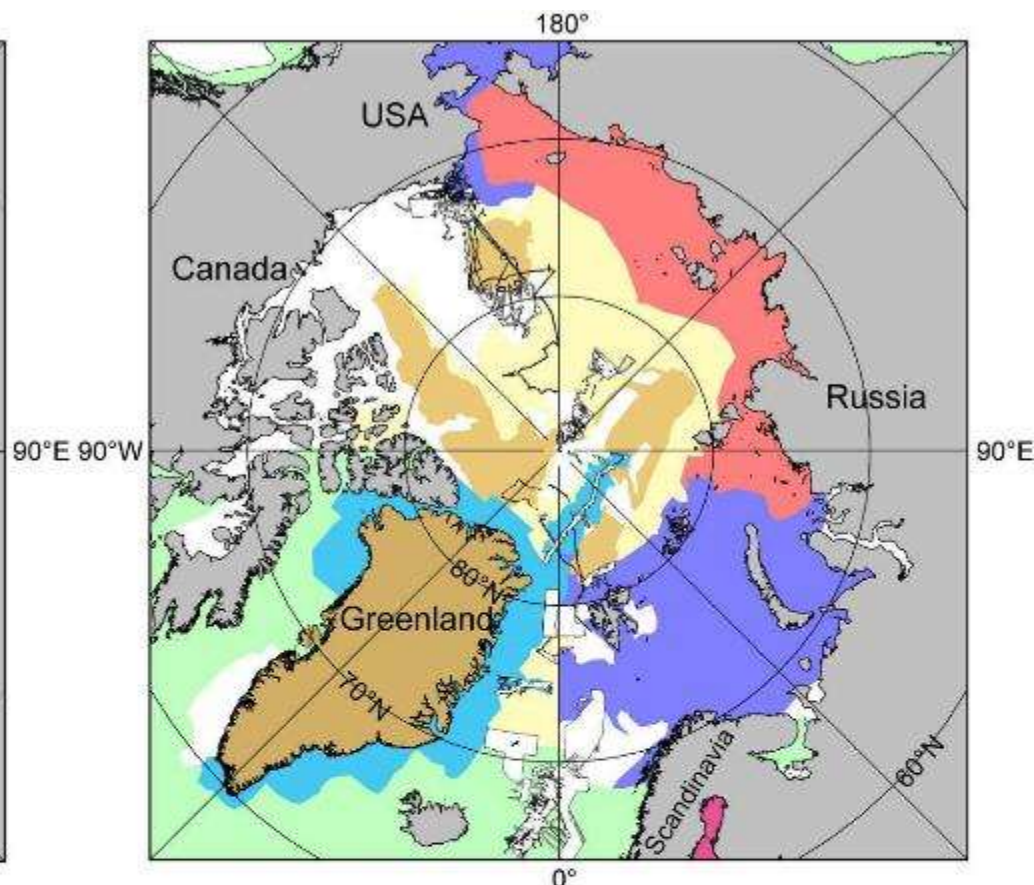
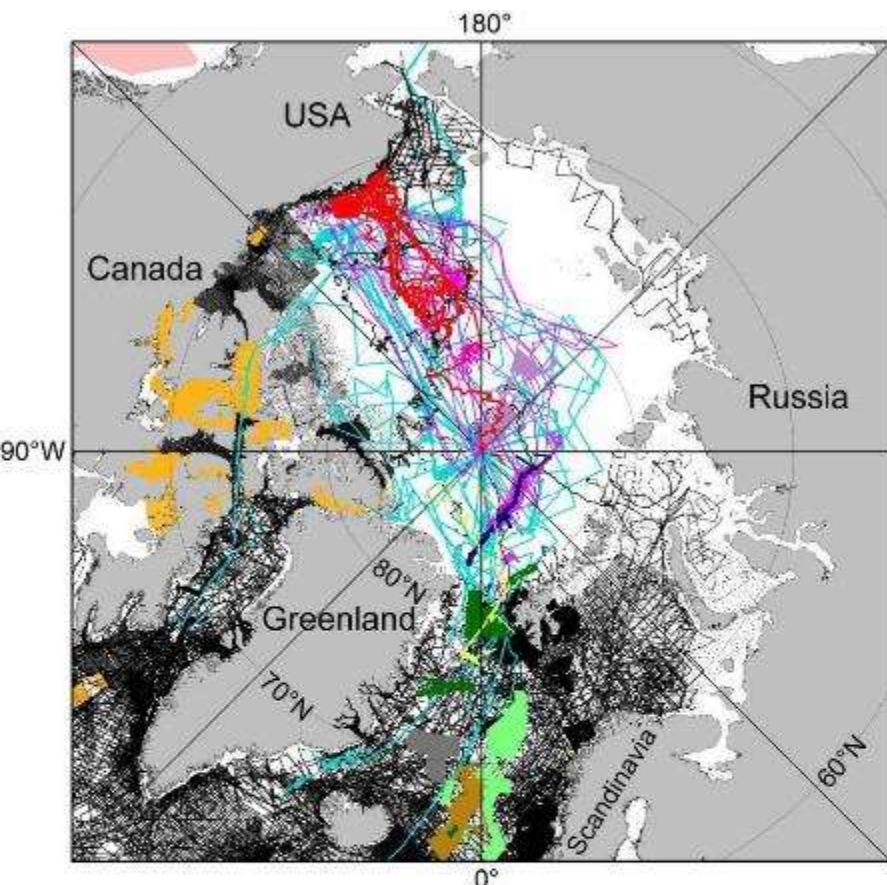
IBCAO Version 3.0

- Higher resolution: 500x500m, where possible
- Better and more accessible source data information
- First snapshots were presented during the American Geophysical Union (AGU) Fall Meeting in San Francisco, December
- Journal article to accompany release published GRL
- Web page updated
- **New printed map based on IBCAO 3.0: Work in progress**

New map coming up!



IBCAO Version 2.0: Source Data (Released 2008)

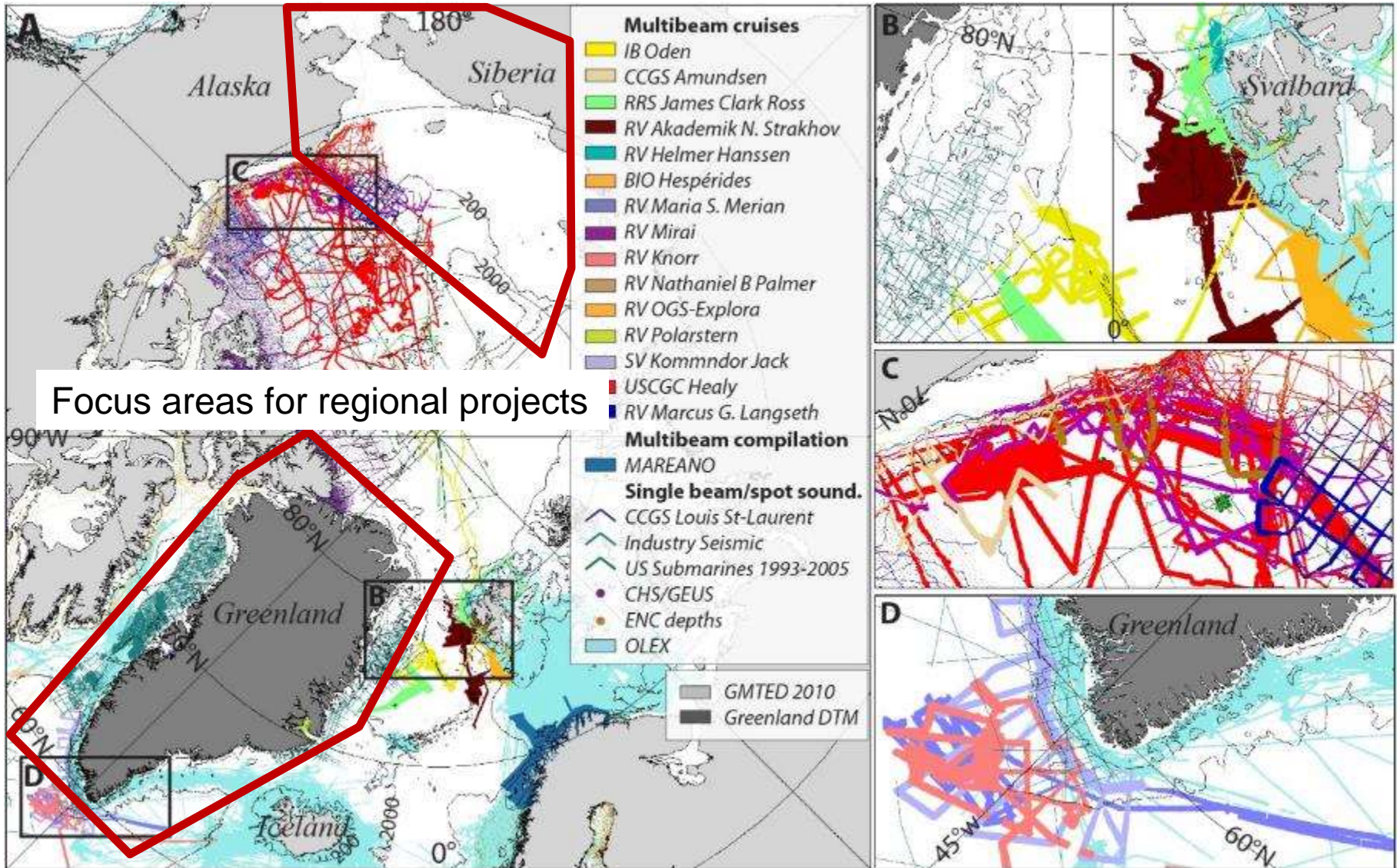


- Multibeam Sources**
- USCGC Healy, R/V Nathaniel B Palmer
 - R/V Polarstern
 - I/B Oden
 - Norwegian Petroleum Directorate
 - AMORE (Healy and Polarstern)
 - SCICEX 1999
 - US Naval Research Laboratory (NRL)
 - US Law of the Sea mapping by the Center for Coastal and Ocean Mapping/ Joint Hydrographic Center*

- Single Beam Sources**
- US and British Royal Navy submarine cruises (1958-1992)
 - SCICEX cruises (1993-1999)
 - Norwegian Hydrographic Service survey
 - Soundings from Canadian Hydrographic Service surveys not included in earlier IBCAOs
 - Soundings collected by various surface vessels and ice drift stations. Five major archives have been included:
 1. US National Geophysical Data Center (NGDC)
 2. US Naval Research Laboratory (NRL)
 3. US Geological Survey (USGS)
 4. Norwegian Hydrographic Service
 5. Royal Danish Administration of Navigation and Hydrography

- Maps and Regional Grids**
- IBCAO drawn contours
 - IBCAO drawn contours based on soundings from charts published by the Russian Federation's Department of Navigation and Oceanography (DNO)
 - 1:5 000 000 scale DNO map of the Arctic Ocean (Naryshkin, 1999)
 - 1:2 500 000 scale DNO map of the Arctic Ocean (Naryshkin, 2001)
 - Charts published by NRL (Perry et al., 1986; Cherkis et al., 1991; Matishov et al., 1995)
 - Contours retrieved from the GEBCO Digital Atlas (GDA) 2003.
 - Bathymetry in the Gulf of Bothnia from a digital grid by Siefert et al. (2001)
 - Greenland DTM by the Danish Cadaster and Mapping Agency (Ekholm, 1996)
 - GTOPO30 topographic model (U.S. Geological Survey, 1997)

New source data added to Version 3.0





OTC 22561

Mapping the Surficial Geology of the Arctic Ocean: A Layer for the IBCAO

D.C. Mosher and R.C. Courtney, Natural Resources Canada; M. Jakobsson, University of Stockholm; C. Gebhardt, Alfred Wegener Institute, L. Mayer, University of New Hampshire

Copyright 2015, Offshore Technology Conference

This paper was prepared for presentation at the Arctic Technology Conference held in Copenhagen, Denmark, 23-25 March 2015.

This paper was selected for presentation by an ATC program committee following review of information contained in an abstract submitted by the author(s). Contents of the paper have not been reviewed by the Offshore Technology Conference and are subject to correction by the author(s). The material does not necessarily reflect any position of the Offshore Technology Conference, its officers, or members. Electronic reproduction, distribution, or storage of any part of this paper without the written consent of the Offshore Technology Conference is prohibited. Permission to reproduce in print is restricted to an abstract of not more than 300 words; illustrations may not be copied. The abstract must contain conspicuous acknowledgment of OTC copyright.

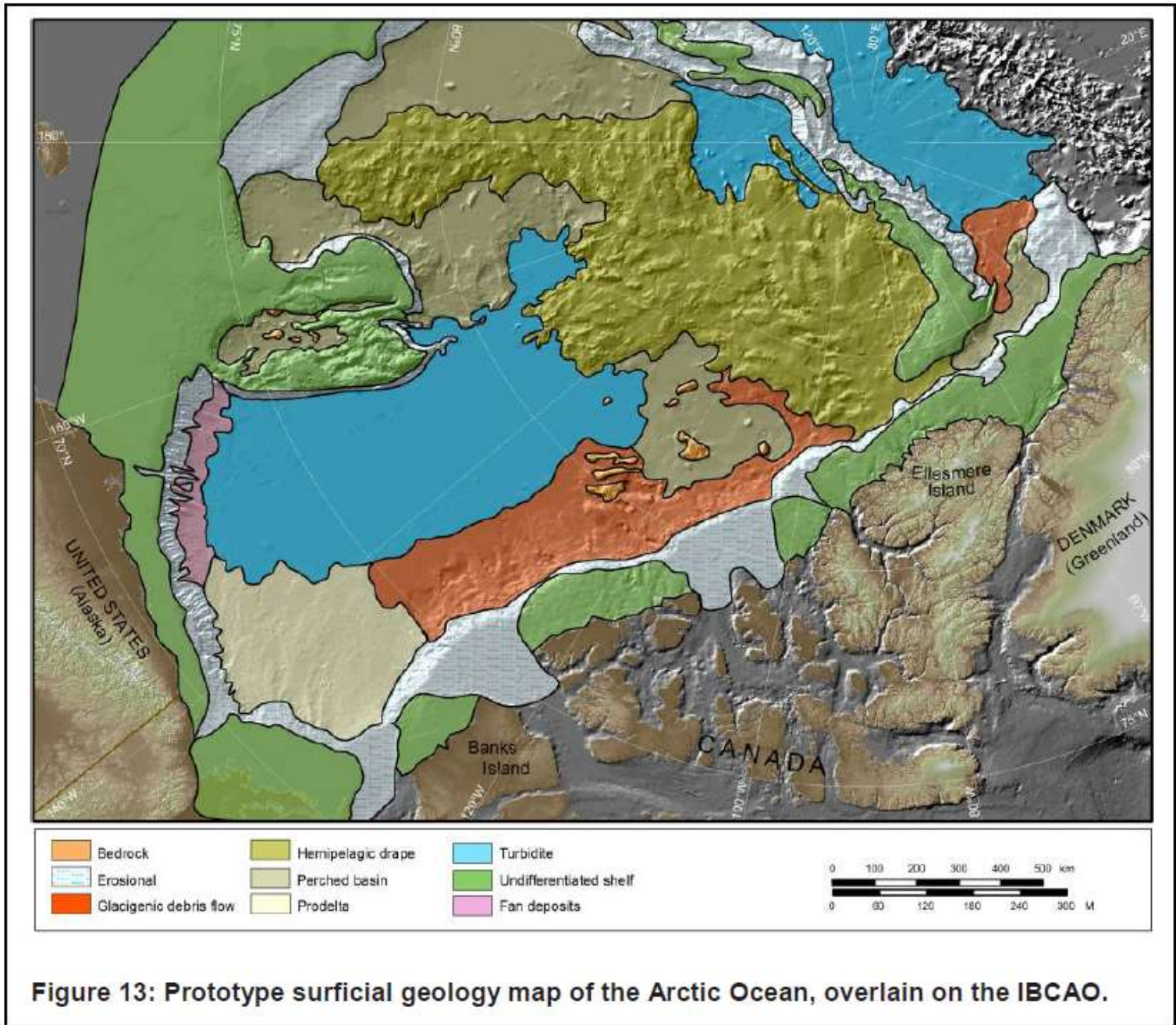


Figure 13: Prototype surficial geology map of the Arctic Ocean, overlain on the IBCAO.



Next in 2015?



Arctic-Antarctic Seafloor Mapping Meeting 2011

Stockholm May 3-5