



# General Bathymetric Chart of the Oceans

# The Centenary Edition of the GEBCO Digital Atlas

Published by the British Oceanographic Data Centre (BODC) on behalf of the International Hydrographic Organisation (IHO) and the Intergovernmental Oceanographic Commission (IOC) of UNESCO.

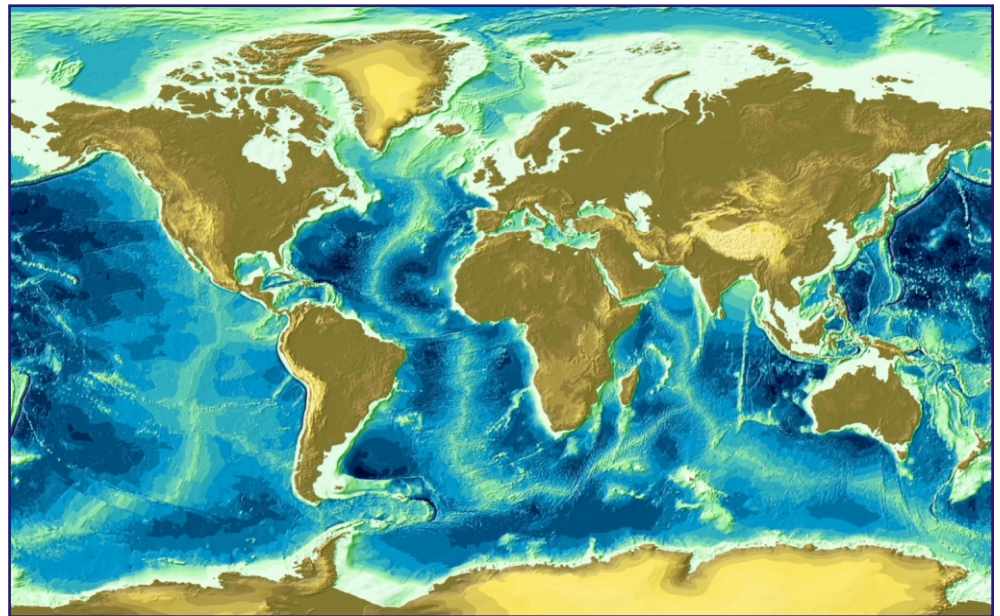
GEBCO is an international reference map of the bathymetry of the world's oceans. It is produced under the joint auspices of the IHO and IOC.

Originally published in chart form, GEBCO is now maintained at BODC in the form of the **GEBCO Digital Atlas (GDA)**.

The **Centenary Edition of the GEBCO Digital Atlas** was published in 2003 to coincide with the 100th anniversary initiation of the GEBCO chart series.

This is the third release of the GDA and is a substantial revision of the earlier issues from 1994 and 1997. It includes major revisions of the bathymetry of the Arctic Ocean, the Indian Ocean, the north-east Atlantic, the Caribbean Sea and the Gulf of Mexico, the Weddell Sea and waters around New Zealand.

The GDA includes the **GEBCO One Minute Grid** - providing bathymetric data on a one minute



*Image produced from the GEBCO One Minute Grid*

global grid. Land elevations from the IGBP GLOBE database are also included.

The GDA also includes a global set of digital bathymetric contours, coastlines, trackline control information and the IHO/IOC Gazetteer of Geographic Names of Undersea Features.

The GDA data sets are distributed on CDROM and are accompanied by a Microsoft Windows software interface.

Through the software interface, users can view the GDA data sets in a variety of forms and projections and download the bathymetric data in a number of formats for use in their own applications.

Version 2.0 of the GDA software interface is now available. It includes additional features allowing users to plot their own files of data points with the GDA data sets and display name text for features from undersea feature names gazetteer.

The GEBCO One Minute Grid is also available for download from the web. Select to download data for a particular geographic area, or the complete grid file. A version of the GDA software interface for viewing and accessing the gridded data set is also available for download.

## Contents of the Centenary Edition of the GDA

### The GEBCO One Minute Bathymetric Grid

Global set of digital bathymetric contours, coastlines and trackline control data

World Vector Shoreline (North of 60°S)

SCAR Coastline of Antarctica (version 3.0)

Digital set of geographically referenced feature names, including IHO/IOC Gazetteer of Geographic Names of Undersea Features

A software interface for viewing and accessing the bathymetric data sets

Further information about GEBCO and the GDA can be found on our web site at:

<http://www.bodc.ac.uk/projects/international/gebc/>



## Features of the Software Interface

Display the GEBCO One Minute Grid colour coded for depth/elevation

Export the gridded data in either NetCDF or ASCII format

Display the bathymetric contours colour coded for depth and select contours for display by depth interval

Export the bathymetric contours in either ASCII, DXF or ESRI Shapefile formats

Choice of 5 map projections for displaying the data

Select a geographic area of interest by chart number, exact co-ordinates or by on screen zoom box

Draw profile plots across the data set

Cursor query on contour depths

Overlay a geographic grid for reference

Display symbols for named undersea features, ports and oceanic islands. Cursor query on symbol will reveal name and supporting documentation

Display name text for features from the IHO/IOC gazetteer of geographic names of undersea features

Display the position of data points from your own data files with the GDA data sets

## How to Order the GDA

The GDA CDROM is available at a price of 230 pounds sterling, inclusive of postage and packing. A special price of 99 pounds is available to educational and academic research establishments. VAT at 17.5% is applicable for orders placed within the European Union.

Order forms are available from our web site:

[http://www.bodc.ac.uk/products/bodc\\_products/gebco/](http://www.bodc.ac.uk/products/bodc_products/gebco/)

Email: [enquiries@bodc.ac.uk](mailto:enquiries@bodc.ac.uk)

## Access the GEBCO One Minute Grid from the web

The GEBCO One Minute Grid is available for download from the web:

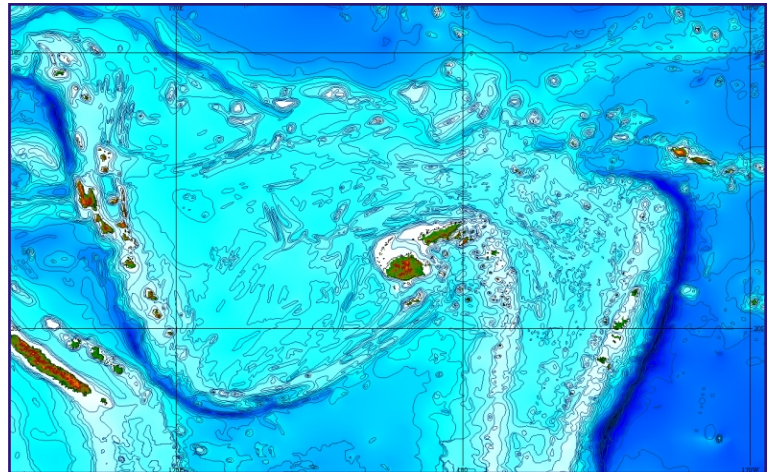
[http://www.bodc.ac.uk/data/online\\_delivery/gebco/](http://www.bodc.ac.uk/data/online_delivery/gebco/)

Free software is available for viewing and accessing data from the GEBCO One Minute Grid file:

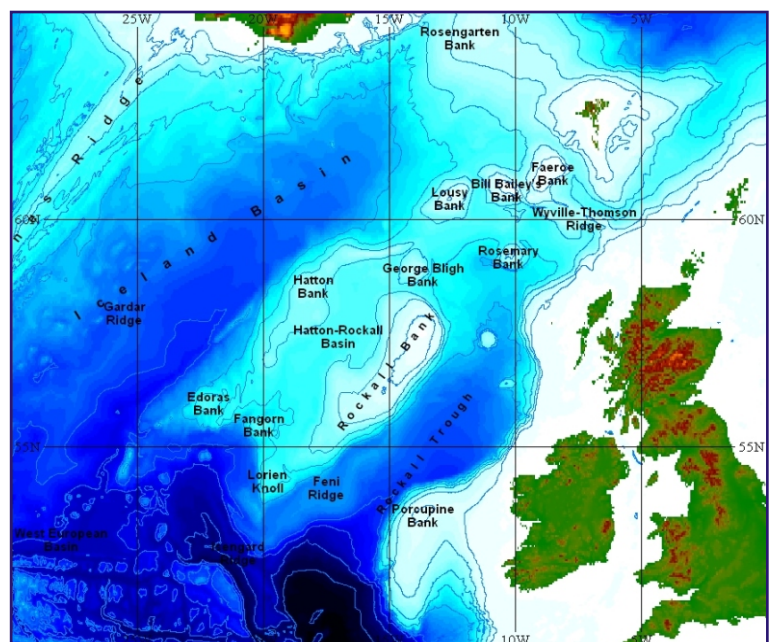
[http://www.bodc.ac.uk/products/software\\_products/gebco\\_grid\\_display/](http://www.bodc.ac.uk/products/software_products/gebco_grid_display/)

**To find out more about GEBCO:**

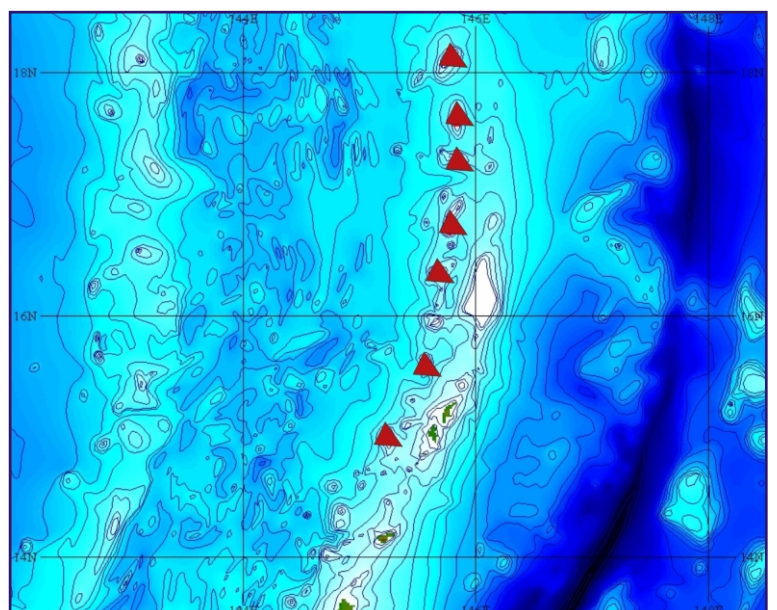
<http://www.gebco.net/>



*Bathymetric contours can be overlaid on the gridded data set*



*Display name text for features from the IHO/IOC Gazetteer of Geographic Names of Undersea Features*



*Display the position of points from your own data files - the image shows the location of submarine volcanoes, shown as red triangles, plotted with the GDA data sets.*