



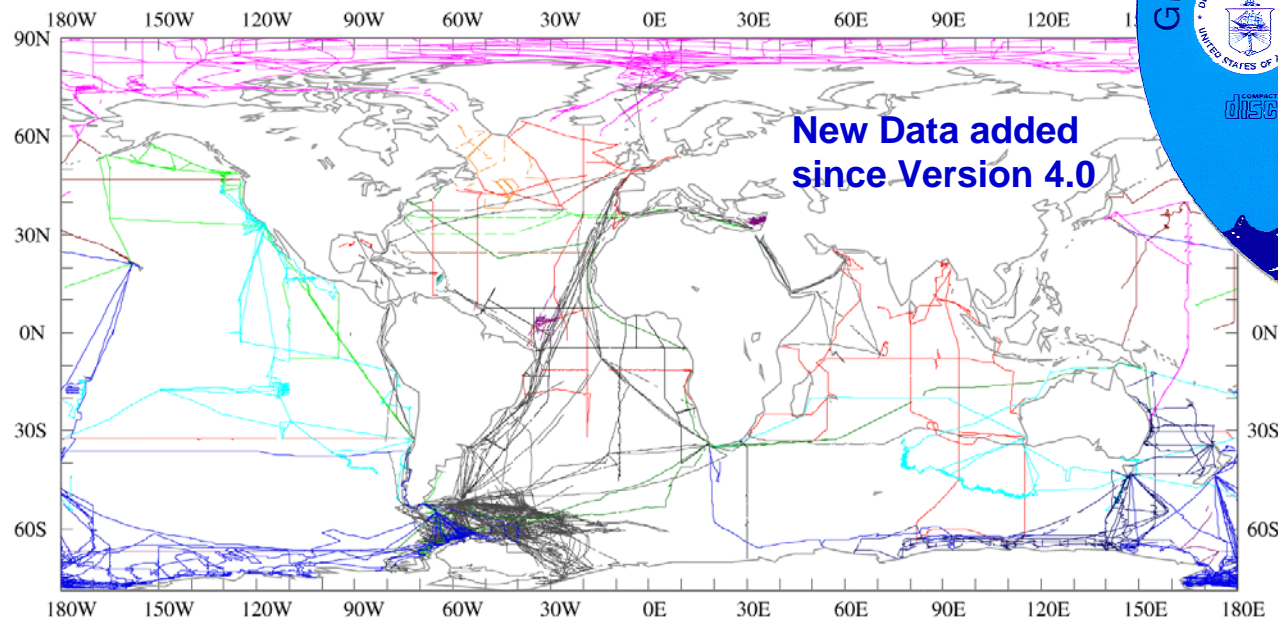
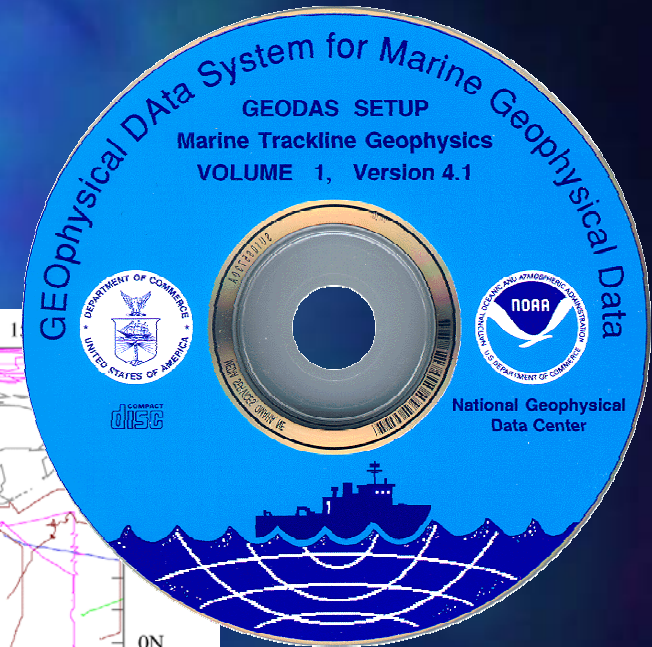
NGDC

NGDC REPORT TO IBCSEP – 2003

NGDC REPORT TO IBCSEP - 2003

Marine Trackline Geophysics, CD-ROM, Version 4.1

- Now over 59.7 million digital records
- 15.9 million nautical miles from 4704 cruises
- 7.2 gigabytes of data



Cylindrical Equidis

LAMONT (LDEO)

CANADA

AUSTRALIA

GERMANY

WOODS HOLE O.I.

SCRIPPS INST.O.C

RUSSIA

ARGENTINA

NOAA

UNITED KINGDOM

SPAIN

US NSF

U.HAWAII SOEST

U.WASHINGTON

NETHERLANDS

UNIV TOKYO

US NAVY

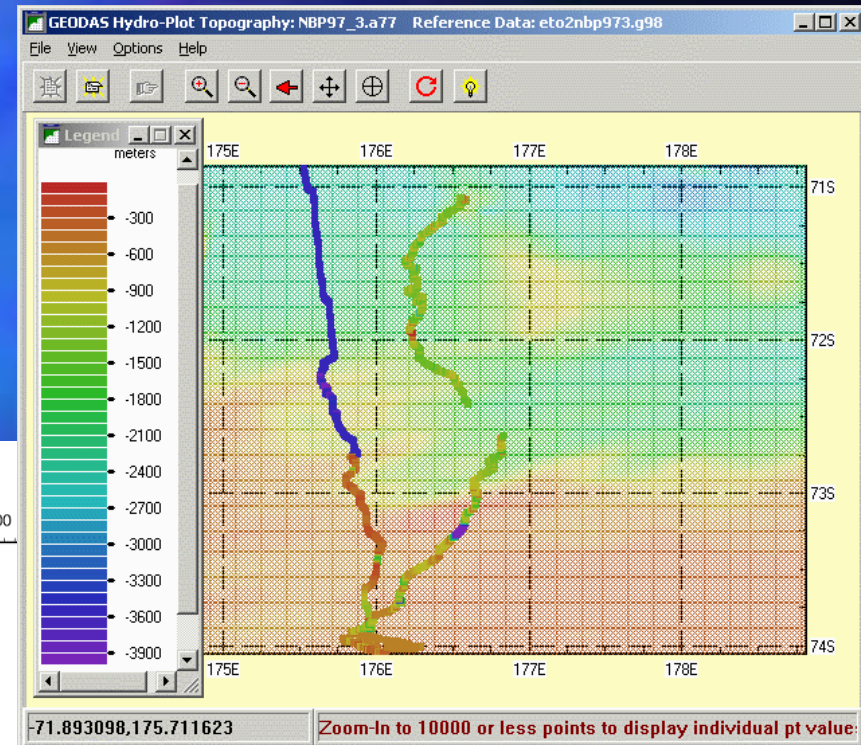
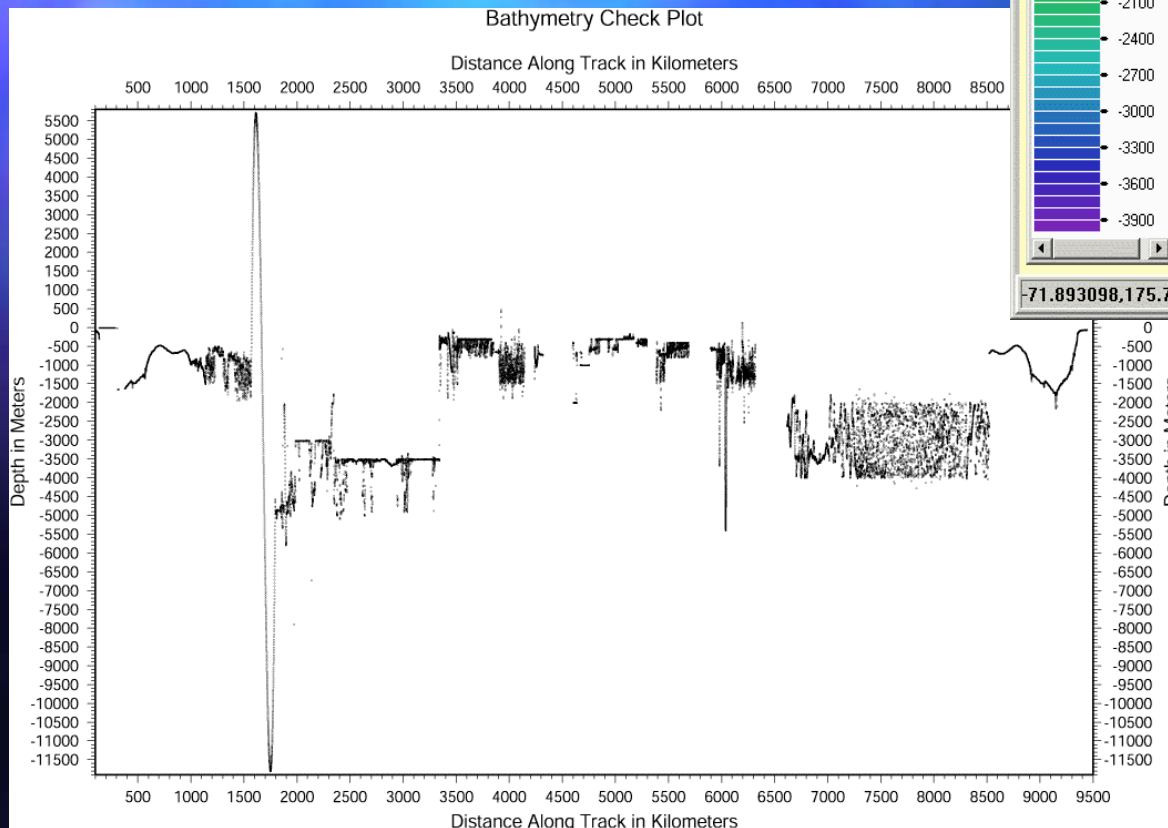
TEXAS A&M UNIV.

FRANCE



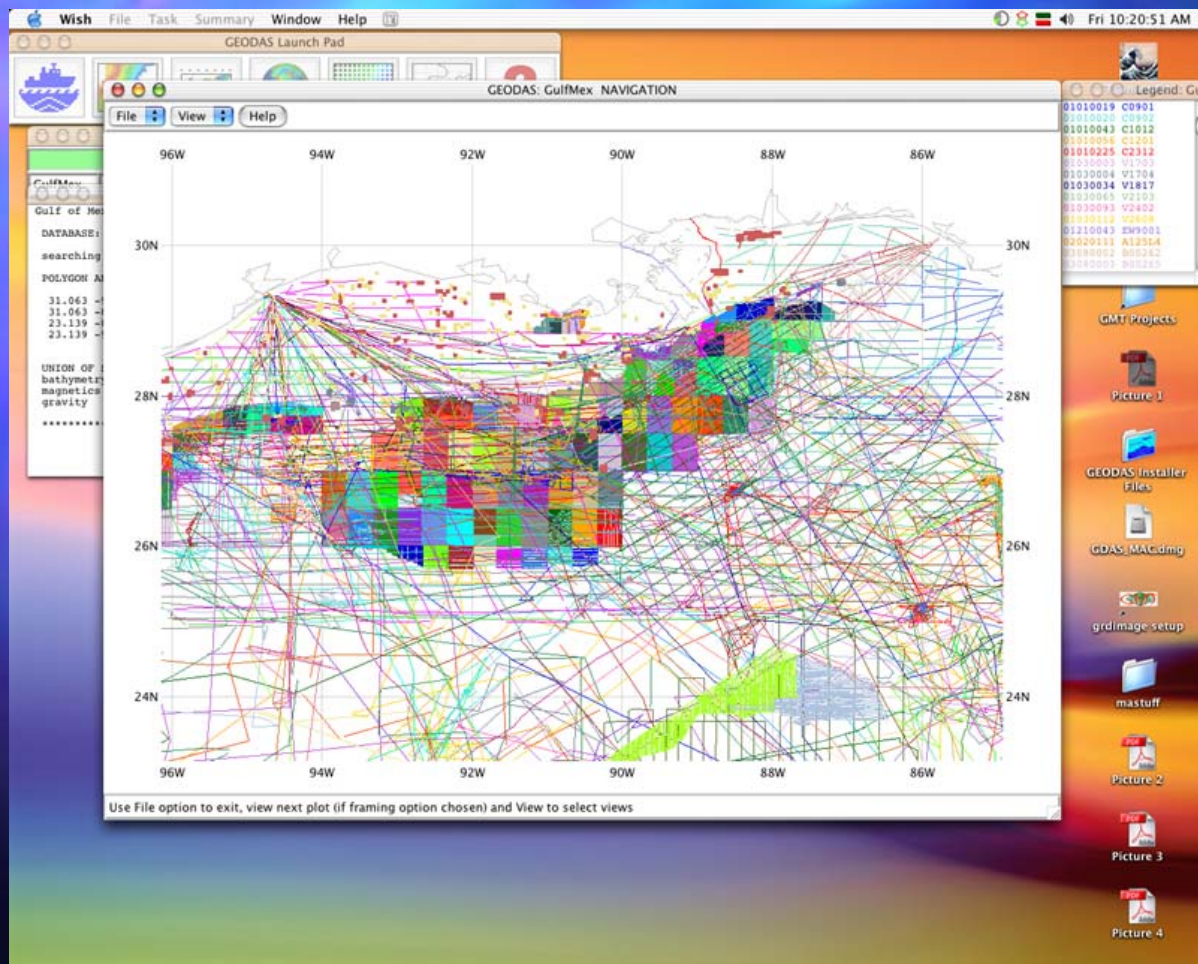
Marine Trackline Geophysics

Depth profile plotted with
Generic Mapping Tools (GMT)



Depth profile plotted with
Hydroplot on top of ETOPO2

NGDC REPORT TO IBCSEP - 2003



- New DVD versions of Trackline & Hydrographic Survey Data
- New Macintosh access added to existing PC/Linux/Unix capabilities

NGDC REPORT TO IBCSEP - 2003

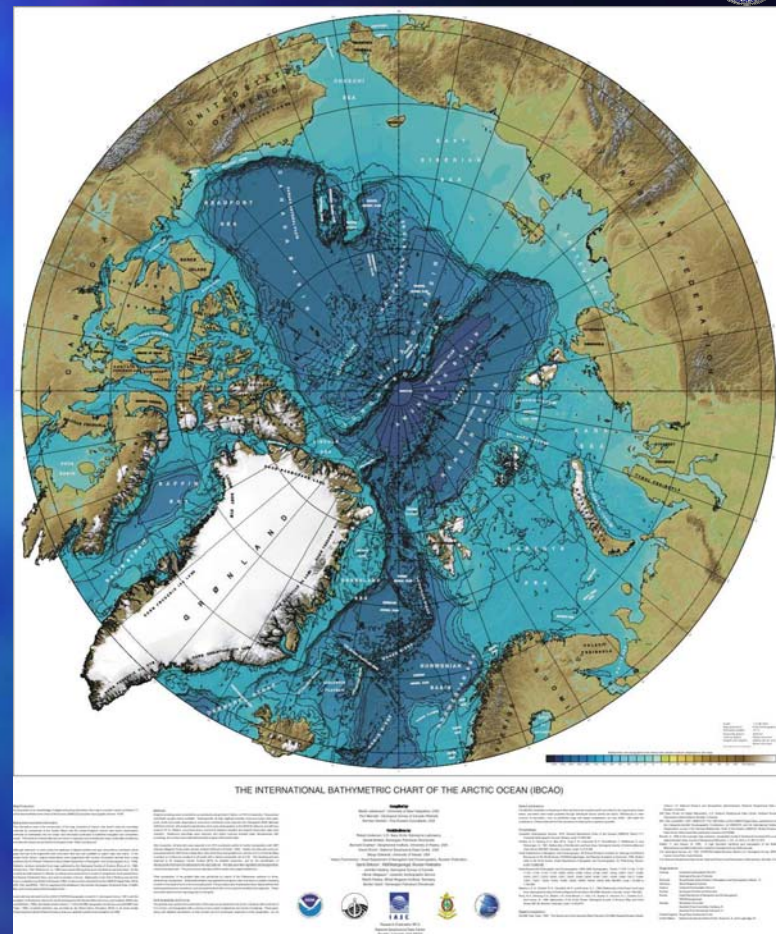
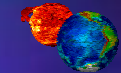
IOC Regional Mapping Programs:

• International Bathymetric Charts:

- Gulf of Mexico & Caribbean (IBCCA)
- Western Indian Ocean (IBCWIO)
- Western Pacific (IBCWP)
- Arctic (IBCAO)
- Mediterranean (IBCM)
- Central Eastern Atlantic (IBCEA)
- Eastern South Pacific (IBCSEP)
- **Proposed:** Southern Oceans (IBCSO)

• WWW Pages for GEBCO, IBCAO, IBCCA, IBCM, IBCWIO, IBCEA, **IBCSEP(?)**

• List servers for IBCAO, IBCSO, GEBCO FOLK, and GEBCO GRIDERS



Draft IBCAO Poster

NGDC REPORT TO IBCSEP - 2003

IOC Regional Mapping Programs:

Eighth International Bathymetric Chart of the Caribbean Sea and the Gulf of Mexico (IBCCA) Editorial Board Meeting and Bathymetric Data Management Training Workshop Hosted by NGDC March 2003

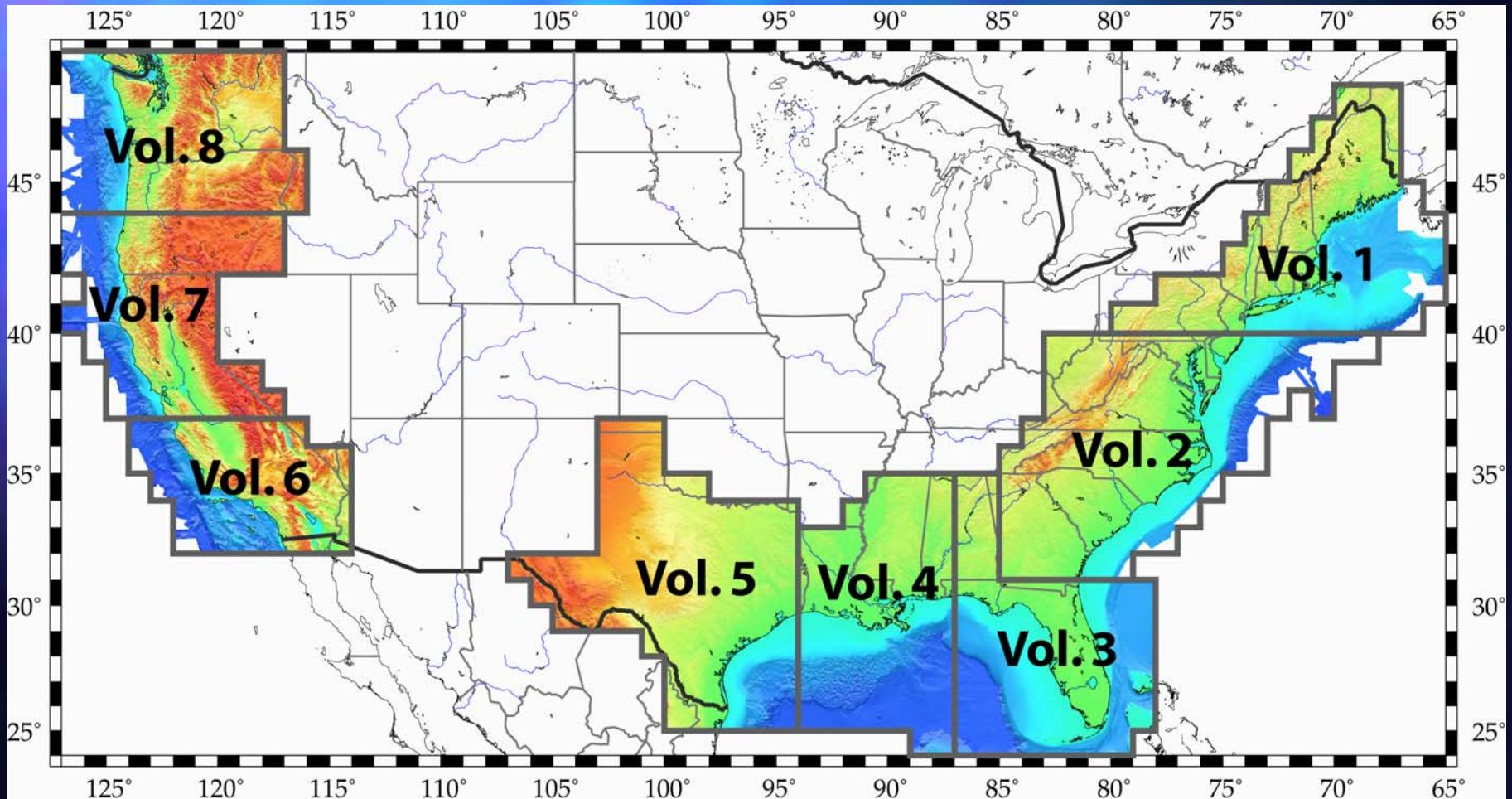


NGDC REPORT TO IBCSEP – 2003



Coastal Relief Model (CRM)

- Continental West Coast Completed
- Alaska, Hawaii, and Puerto Rico Scheduled



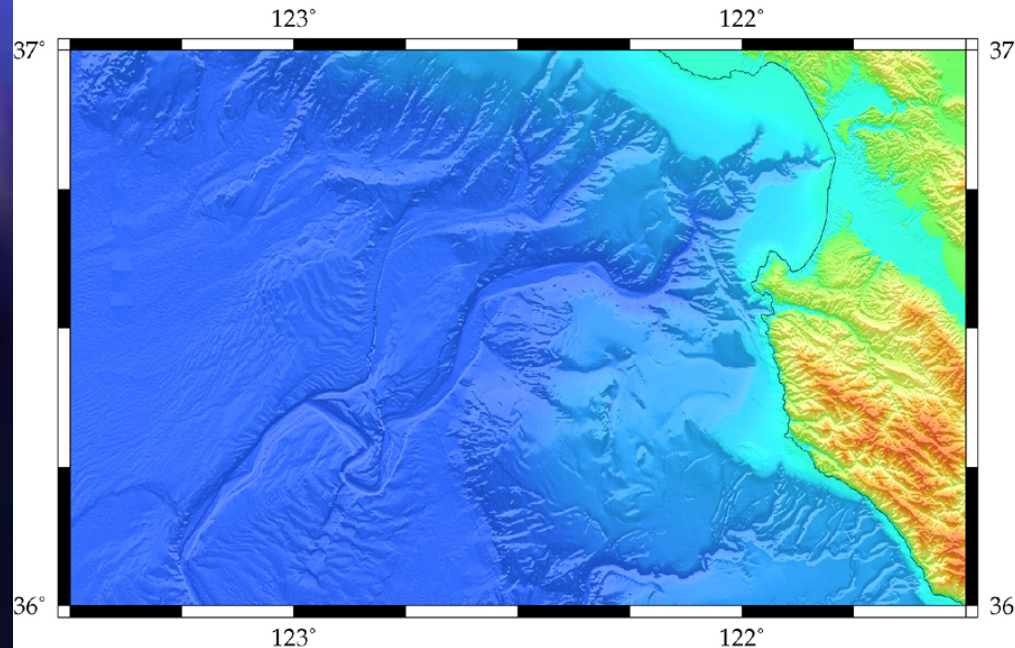
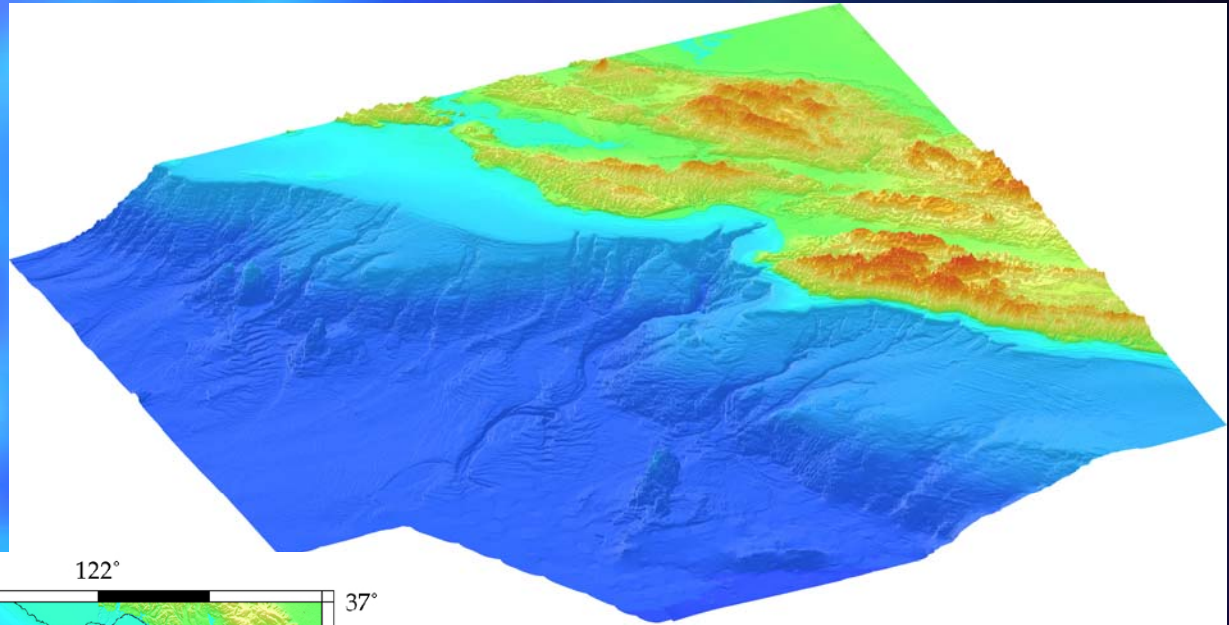
NGDC REPORT TO IBCSEP – 2003



Coastal Relief Model (CRM)

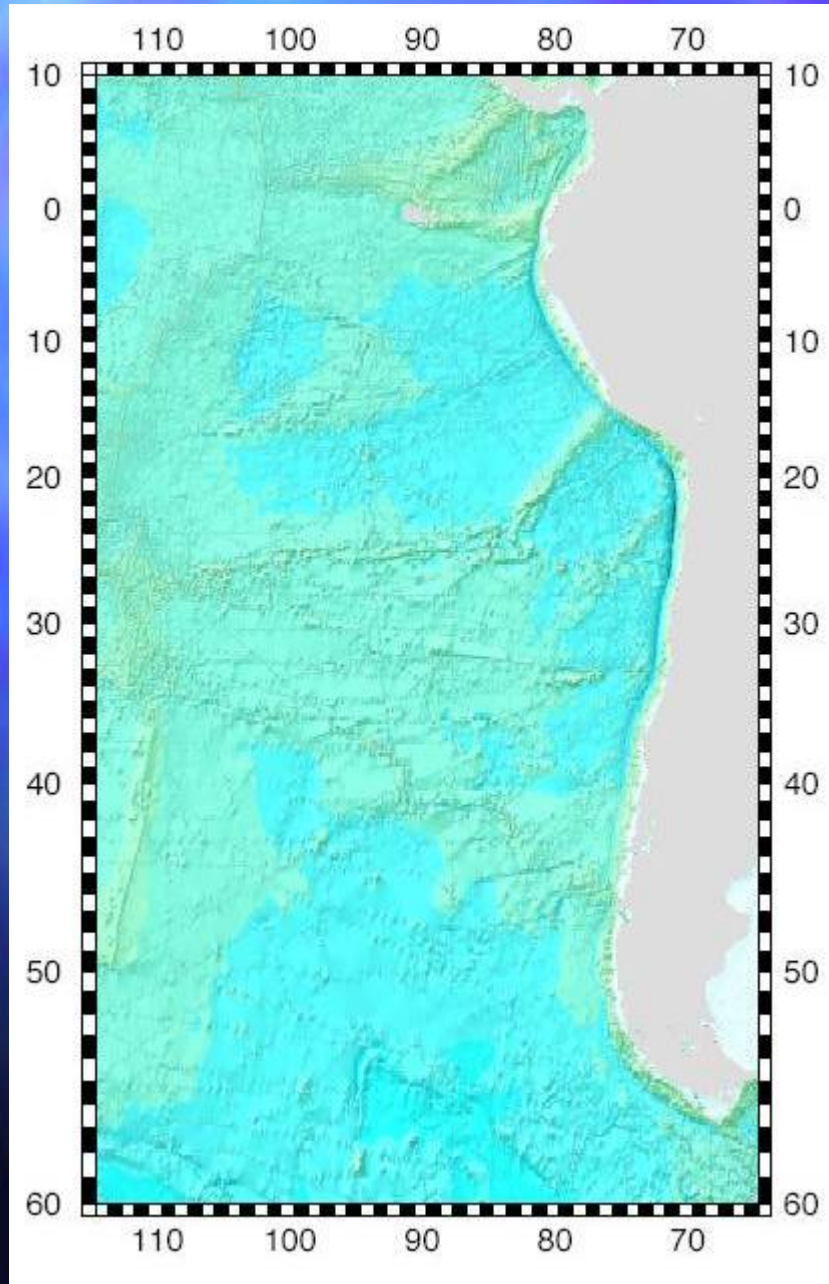
U.S. West Coast

Available on CD-ROM or
DVD



Detail: Monterey Canyon, California

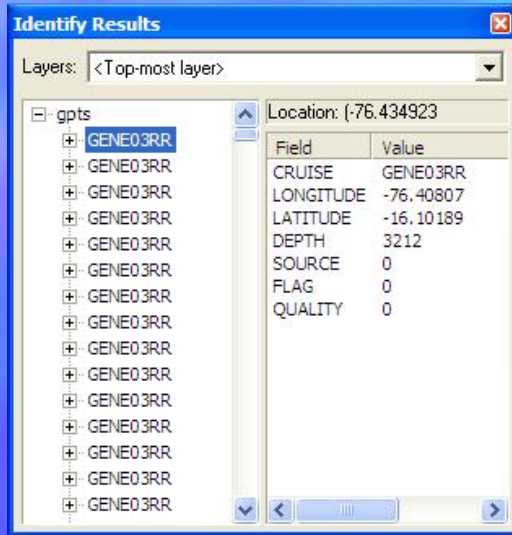
NGDC REPORT TO IBCSEP – 2003



IBCSEP Grid

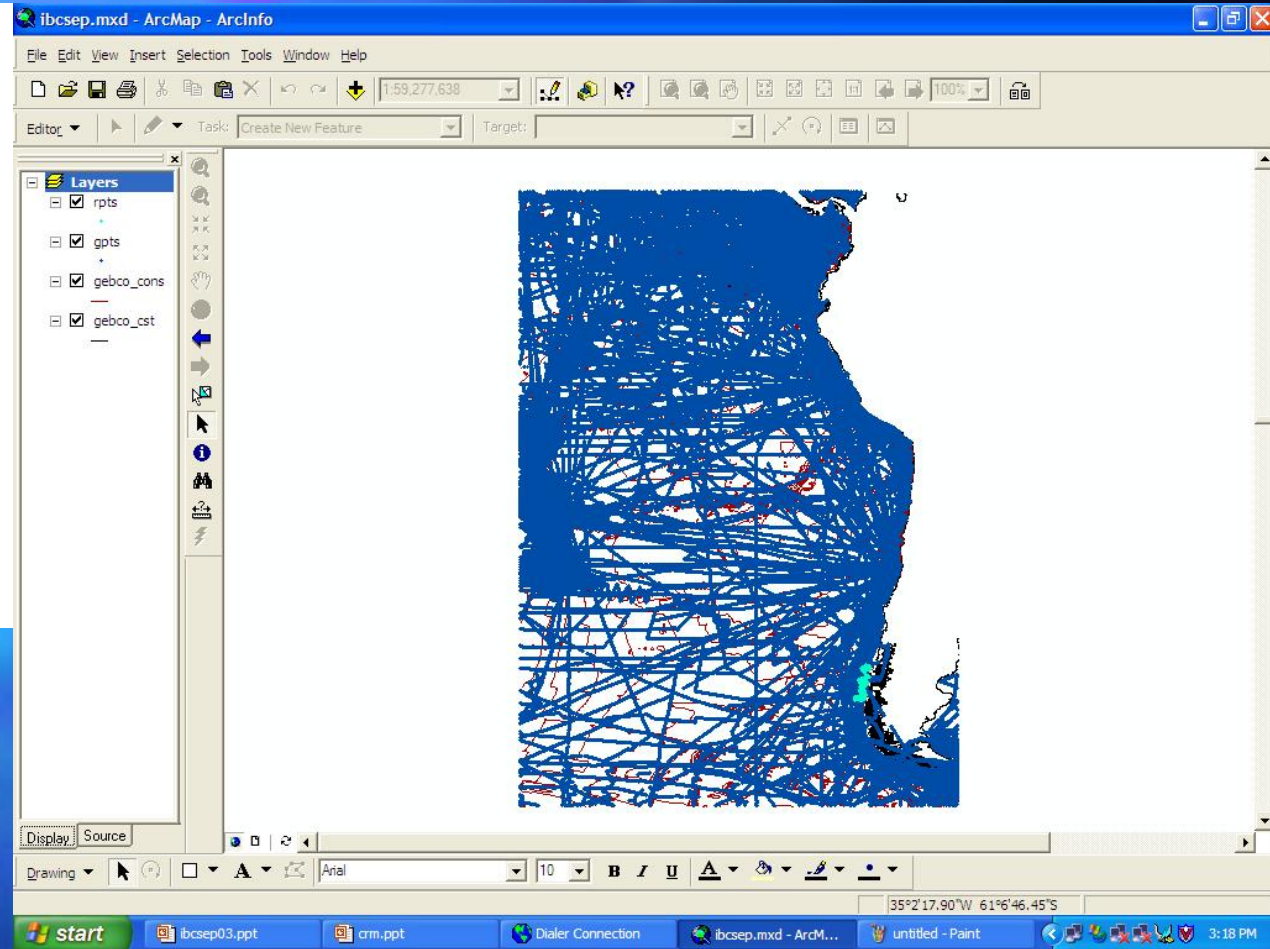
Initial Grid Based IHO DCDB
Data and GEBCO Contours

NGDC REPORT TO IBCSEP – 2003

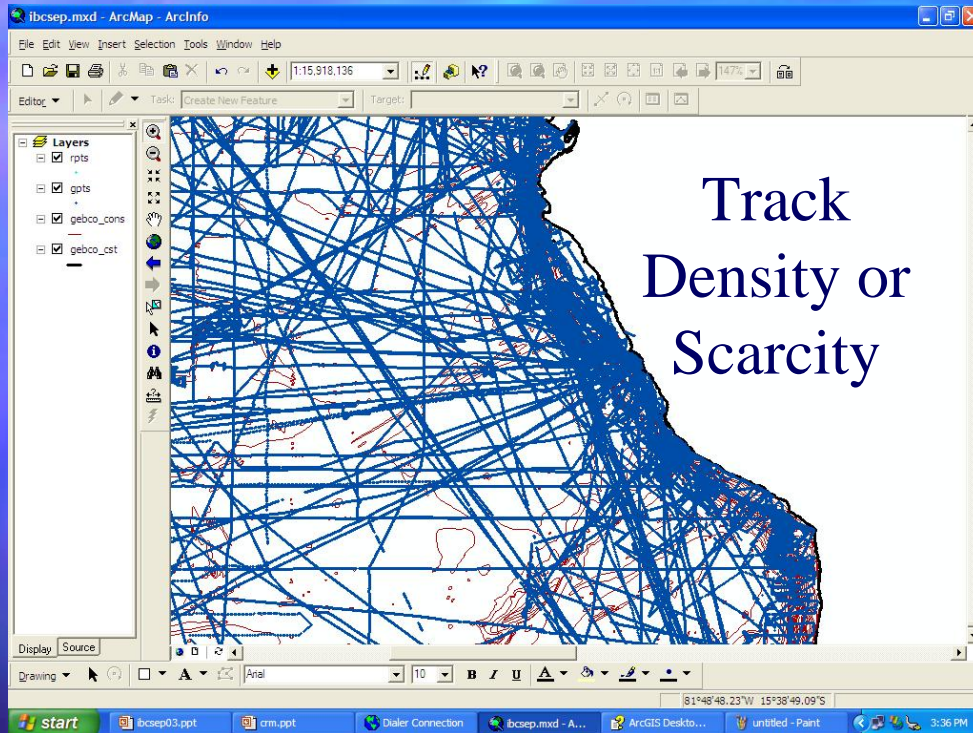


Over 4 Million
Soundings

Using ArcGIS to
set up and QC
IBCSEP database

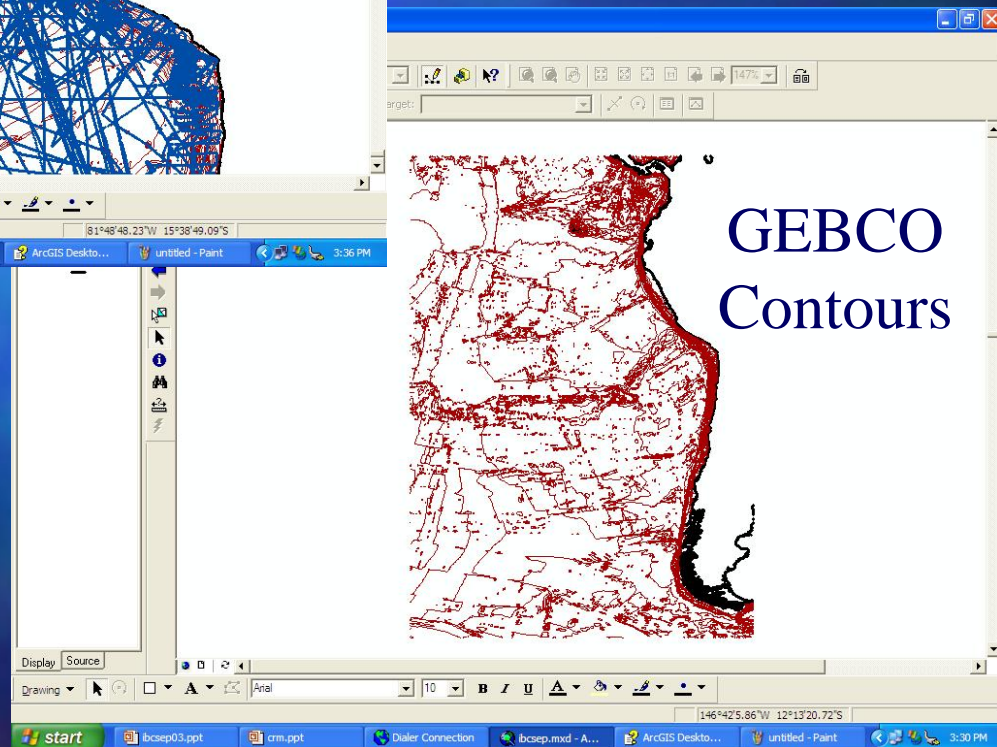


NGDC REPORT TO IBCSEP – 2003



Many Areas with
No Data

Still Need More
Data!



NGDC REPORT TO IBCSEP – 2003

Issues to Consider

Products:

Paper Maps?

Digital Charts -

Format that will be useful to scientific community

Grid for all Southeast Pacific Region

Data Quality:

Combining Hydrographic data with Academic data

MORE DATA!