



## General Bathymetric Chart of the Oceans (GEBCO)

# The GEBCO Digital Atlas

Published by the British Oceanographic Data Centre (BODC) on behalf of the International Hydrographic Organisation (IHO) and the Intergovernmental Oceanographic Commission (IOC) of Unesco.

GEBCO is an international reference map of the seafloor depth of the world's oceans. It is produced under the joint auspices of the IHO and IOC.

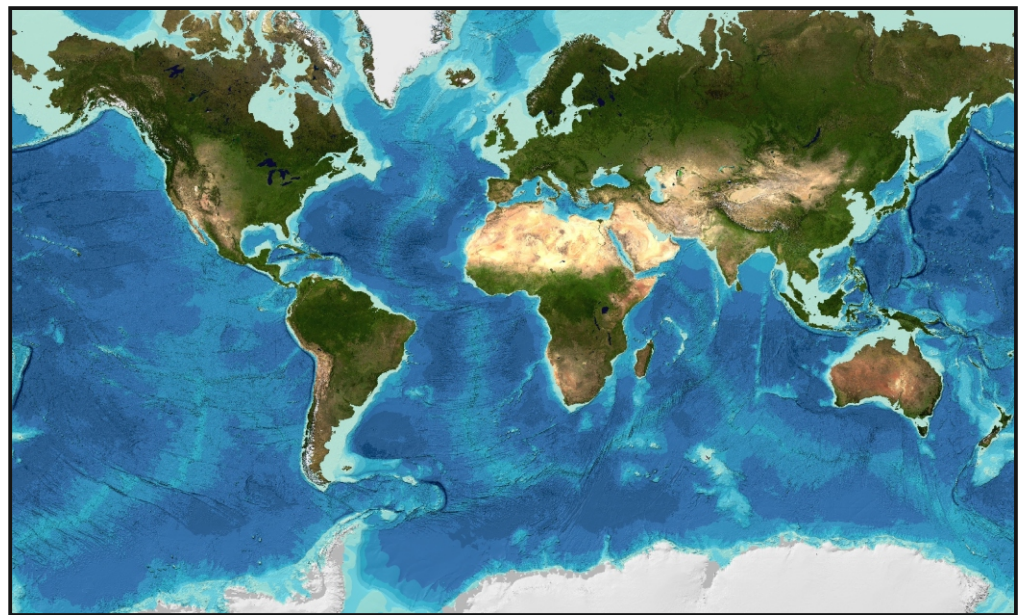
Originally published in chart form, GEBCO is now maintained at BODC in the form of the **GEBCO Digital Atlas (GDA)**.

The **Centenary Edition of the GDA**, was released in 2003. The GDA is regularly updated and now includes all GEBCO's global bathymetric data sets, including:

The **GEBCO\_2014 Grid** - a global bathymetric grid at 30 arc-second intervals. It is largely based on ship-track soundings with interpolation between soundings guided by satellite-derived gravity data. Where they improve on this base grid, data sets developed by other methods are included. Land data are taken from the SRTM30 data set.

The **GEBCO\_2014 Source Identifier (SID) Grid**, providing information on which cells in the GEBCO\_2014 Grid are based on soundings and which are interpolated.

The **GEBCO One Minute Grid** - a



*Image reproduced from GEBCO Grid*

global bathymetric grid at one arc minute intervals. The grid is largely based on the bathymetric contours contained in the GDA. Land elevations are derived from the GLOBE data set.

The GDA also includes a **global set of digital bathymetric contours, coastline and trackline information** and the

**IHO/IOC Gazetteer of Geographic Names of Undersea Features.**

The GDA data sets are distributed on DVD and are accompanied by a Microsoft Windows software interface.

Through the software interface users can view the GDA data sets in a variety of forms and projections and to select to download the data in a number of formats.

The software includes additional features to allow users to plot their own files of data points with the GDA data sets and display name text for features from the undersea feature names gazetteer.

GEBCO's gridded data sets can also be downloaded from the internet.

A software interface, for viewing and accessing the gridded data sets, is also available to download.

### Contents of the GEBCO Digital Atlas

The GEBCO\_2014 Grid and GEBCO\_2014 Source Identifier (SID) Grid

- The GEBCO One Minute Grid
- Bathymetric contours, coastlines and trackline control data from the April 2003 version of the GEBCO Digital Atlas
- Digital set of geographically referenced feature names, including IHO/IOC Gazetteer of Geographic Names of Undersea Features
- A software interface for viewing and accessing the bathymetric data sets

Find out about data set and software updates and errata

[http://www.bodc.ac.uk/products/bodc\\_products/gebco/](http://www.bodc.ac.uk/products/bodc_products/gebco/)





## Features of the Software Interface

- Display GEBCO's gridded bathymetric data sets colour coded for depth/elevation
- Export the gridded data in either NetCDF or ASCII format, including a form suitable for conversion to an ESRI raster
- Display the bathymetric contours colour coded for depth and select contours for display by depth interval
- Export the bathymetric contours in either ASCII, DXF or ESRI Shapefile formats
- Choice of resolution for WVS and SCAR coastlines
- Choice of 5 map projections for displaying the data
- Select a geographic area of interest by chart number, exact co-ordinates or by on screen zoom box
- Draw profile plots across the data set
- Cursor query on contour depths
- Current cursor position constantly displayed in geographic co-ordinates
- Overlay trackline control data
- Display symbols for named undersea features, ports and oceanic islands. Cursor query on symbol will reveal name and supporting documentation
- Display name text for features from the IHO/IOC Gazetteer of Geographic Names of Undersea Features
- Display the position of data points from your own data files with the GDA data sets

## How to Order the GDA

The GDA disc set is available at a price of 260 pounds sterling, inclusive of postage. A special price of 99 pounds is available to educational and academic research establishments. VAT at 20% is applicable for orders placed within the European Union.

Order forms are available from our web site:

[www.bodc.ac.uk/products/bodc\\_products/gebco/](http://www.bodc.ac.uk/products/bodc_products/gebco/)

Email: [enquiries@bodc.ac.uk](mailto:enquiries@bodc.ac.uk)

## Access GEBCO's grids from the web

GEBCO's grids are available to download:

[www.bodc.ac.uk/data/online\\_delivery/gebco/](http://www.bodc.ac.uk/data/online_delivery/gebco/)

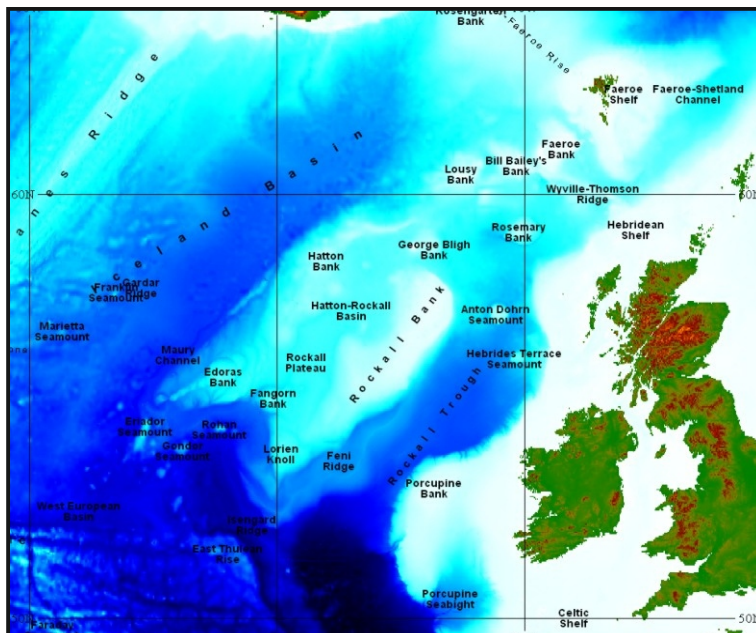
Software is available for viewing and accessing the data sets:

[www.bodc.ac.uk/products/software\\_products/gebco\\_grid\\_display](http://www.bodc.ac.uk/products/software_products/gebco_grid_display)

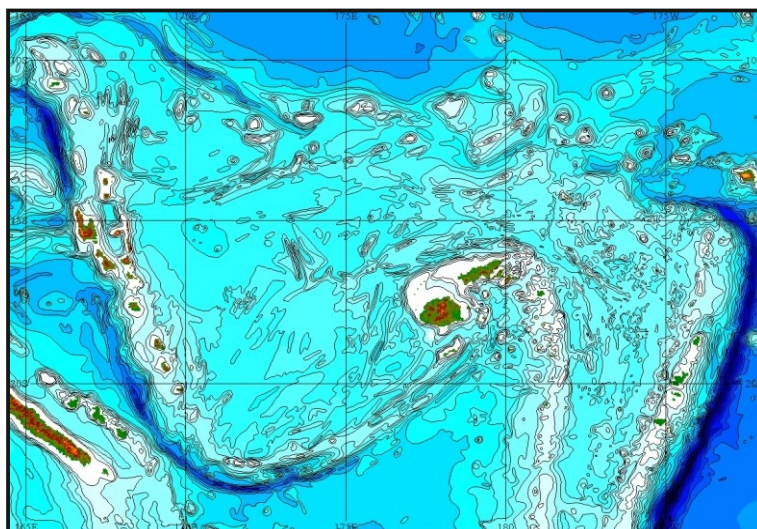
## Find out more about GEBCO:

[www.gebco.net](http://www.gebco.net)

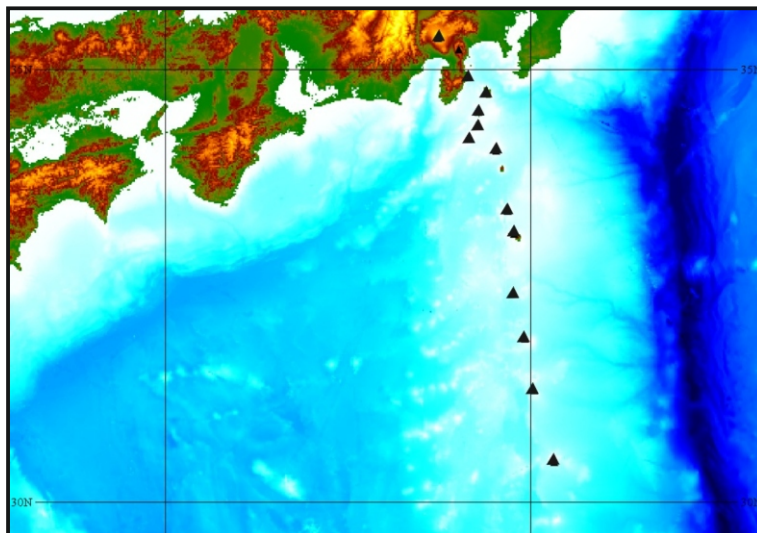
## Sample images produced from the GEBCO Digital Atlas Software Interface



*Display name text for features from the IHO/IOC Gazetteer of Geographic Names of Undersea features*



*Bathymetric contours overlain on the GEBCO One Minute Grid*



*Display the position of points from your own data files - the image shows the location of submarine volcanoes (black triangles) plotted with the GEBCO Grid*