

Error reported in the GEBCO_2020 Grid in the Adriatic Sea region (43° 30'N, 16° 20'E)

Areas of anomalously deep bathymetric values have been reported in the GEBCO_2020 Grid in the Adriatic Sea region around 43° 30'N, 16° 20'E. In this area, the GEBCO_2020 Grid is largely based on a database of ship-track soundings with interpolation between soundings guided by satellite-derived gravity data. The anomalously deep regions appear to be based on interpolation.

The images below illustrate this issue. Further details about the GEBCO_2020 Grid can be found at: www.gebco.net/data_and_products/gridded_bathymetry_data/gebco_2020/

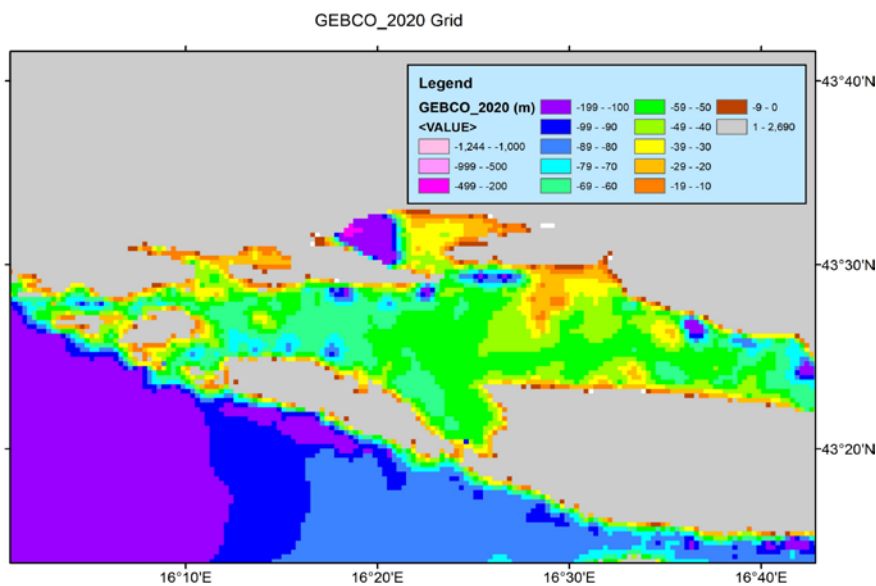


Figure 1. The GEBCO_2020 Grid colour-coded for elevation

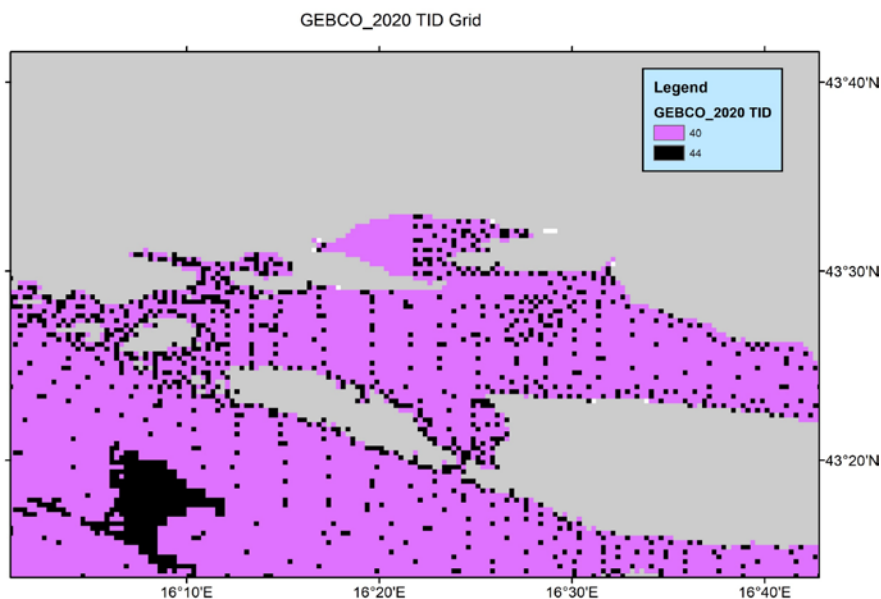


Figure 2. The GEBCO_2020 TID Grid – this indicates the type of data that the corresponding cell in the bathymetric grid is based on. Code 40= "Predicted based on satellite-derived

gravity data - depth value is an interpolated value guided by satellite-derived gravity data”,
Code 44= “Bathymetric sounding - depth value at this location is constrained by bathymetric sounding(s) within a gridded data set where interpolation between sounding points is guided by satellite-derived gravity data “.

A list of the TID codes can be found on GEBCO’s web site:

https://www.gebco.net/data_and_products/gridded_bathymetry_data/gebco_2020/