

Errors reported in the GEBCO_2020 Grid in the North American Great Lakes region

Anomalously deep bathymetric values have been reported in the GEBCO_2020 Grid in some parts of Lake Huron, Lake Erie and Lake Ontario. These anomalous depth values appear to be due to the generation of the grid using data from different sources where there is a mismatch between the data sets. Within the data set, they appear at regular intervals on a grid-like pattern. The image below illustrates this issue.

Further details about the GEBCO_2020 Grid can be found at:
www.gebco.net/data_and_products/gridded_bathymetry_data/gebco_2020/

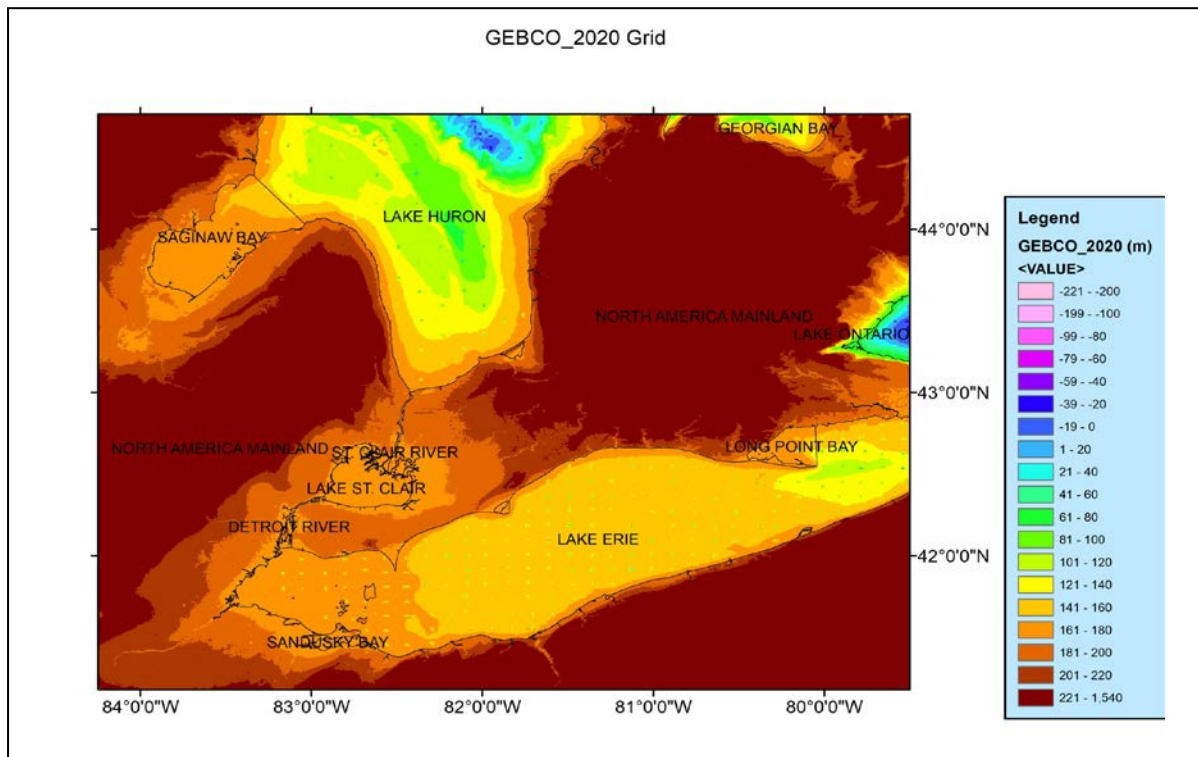


Figure 1. The GEBCO_2020 Grid for part of the Great Lakes region. A 'grid pattern' of anomalous deep values can be seen in parts of Lake Erie, Lake Huron and Lake Ontario.