

Error reported in the GEBCO_2021 Grid in the Torres Strait region (144°E, 9°S)

An erroneous 'trench-like' feature has been reported in the GEBCO_2021 Grid in the Torres Strait region, Southwest Pacific Ocean, 144°E, 9°S. This is due errors along a survey track. The images below show the location of the error and the coverage of trackline data used to generate the GEBCO grid in this region.

Further details about the development of the GEBCO_2021 Grid can be found in the data set's [documentation](#).

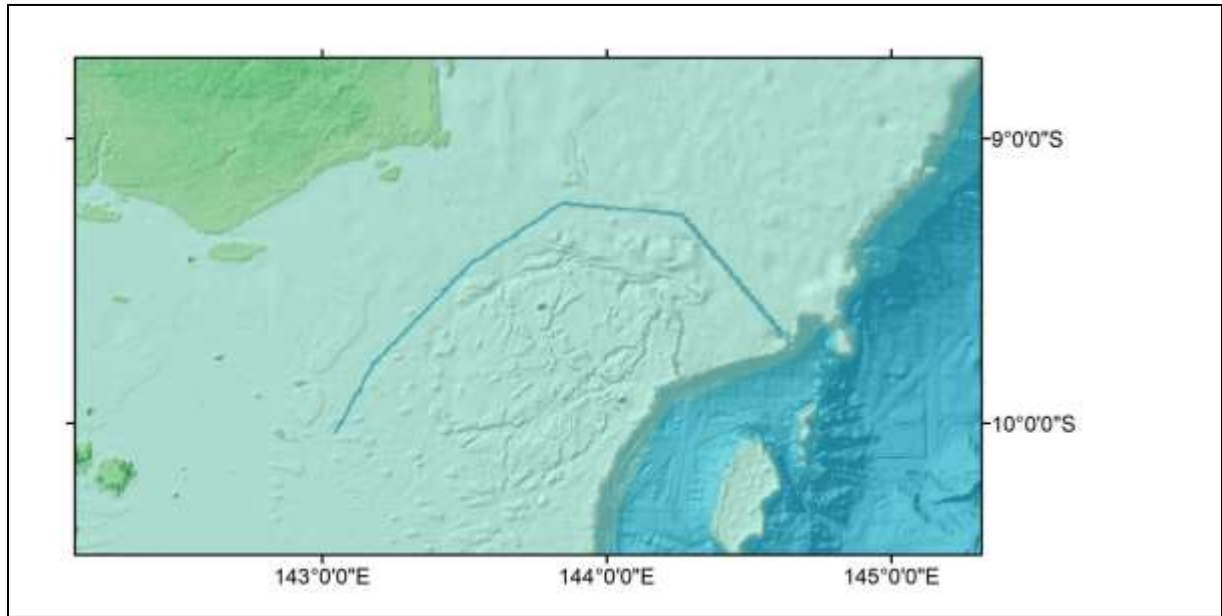


Figure 1. GEBCO_2021 Grid for part of the Torres Strait region with the position of the anomalous 'trench' feature indicated.

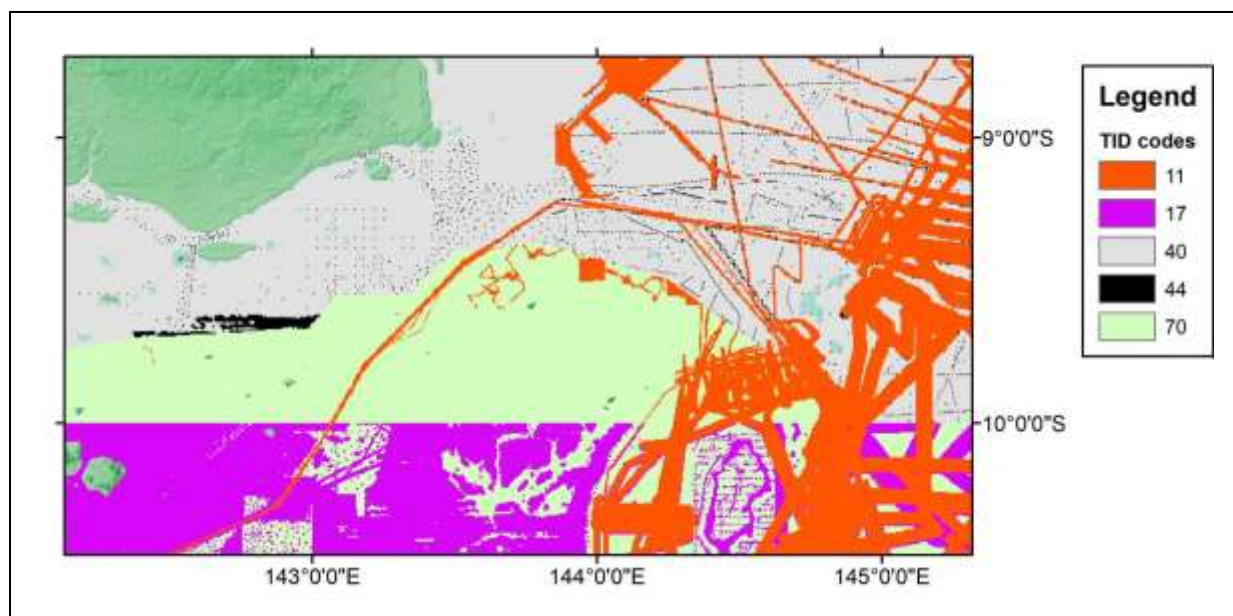


Figure 2. The Type Identifier (TID) Grid for the region – showing the [type of data](#) that the corresponding area in the GEBCO bathymetric grid is based on