

Errors reported in the GEBCO_2022 Grid in the Southwest Pacific Ocean region – off New Zealand (179° 30'E, 38° 30'S)

Erroneous lines of discontinuity have been reported in the GEBCO_2022 Grid in the region 179° 30'E, 38° 30'S. Within the grid, this appears as large differences in depth values across the discontinuity lines. The images below show the location of the errors.

Further details about the development of the GEBCO_2022 Grid can be found in the data set's [documentation](#).

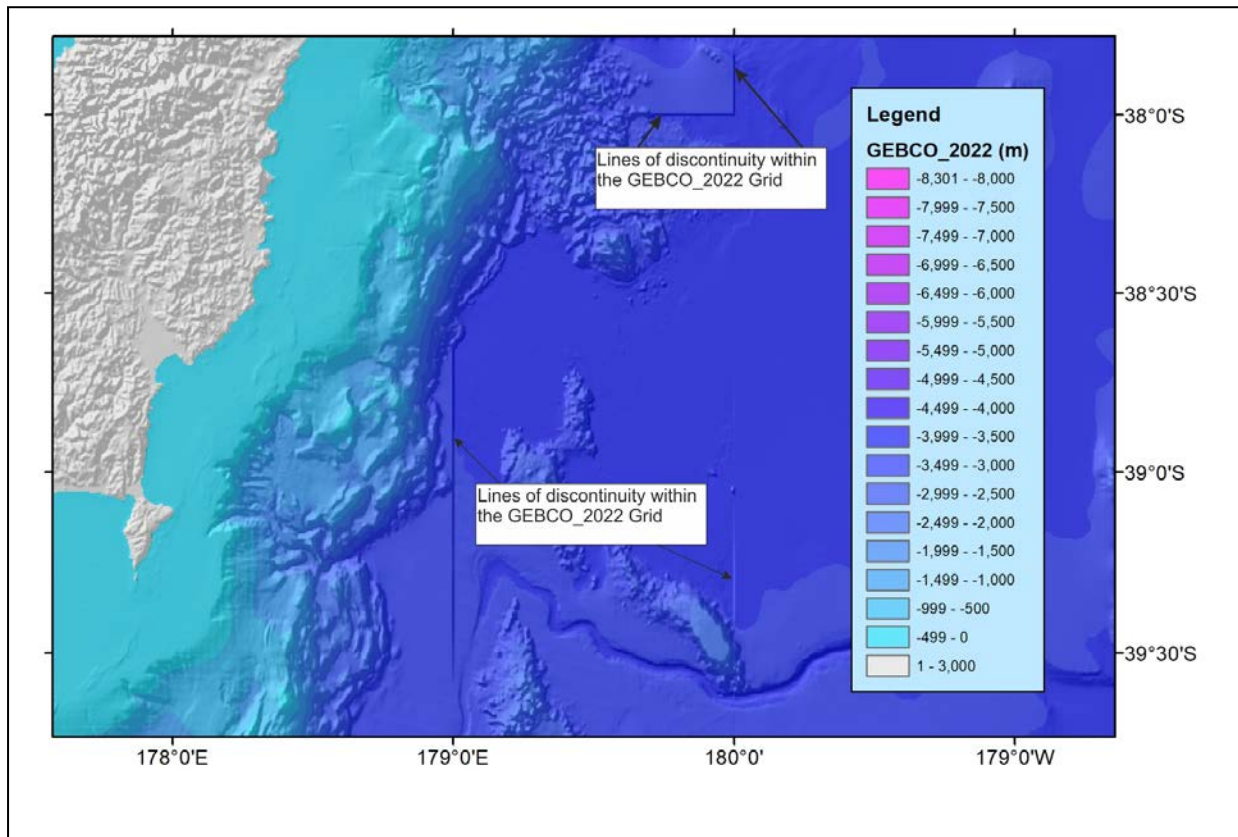


Figure 1. GEBCO_2022 Grid for part of the Southwest Pacific Ocean region with the position of lines of discontinuity indicated.