

## GEBCO\_08 Grid - artefacts in the Faroe Bank region

There are anomalous shallow water areas shown in the GEBCO\_08 Grid in the region of the Faroe Bank in the North Atlantic Ocean (9° 21' 0.413''W; 60° 49' 39.134''N). This is shown in Figure 1 below.

These artefacts are created during the generation of the grid.

The GEBCO\_08 Grid has been generated by combining measured depth data (collected by ships) with satellite-derived depth estimates in regions where measured data are not available. For these anomalous regions, as shown in Figure 1, the depth value in the grid has been interpolated and is not based on actual soundings.

The GEBCO\_08 Grid is accompanied by a Source Identifier (SID) Grid. This shows which cells in the GEBCO\_08 Grid have been constrained by bathymetry data and which have been interpolated.

Figure 2 shows data from the SID Grid (shown as black dots/lines) overlaid on the GEBCO\_08 Grid.

Please see the documentation that accompanies the data set for more information on the generation of the GEBCO\_08 Grid.

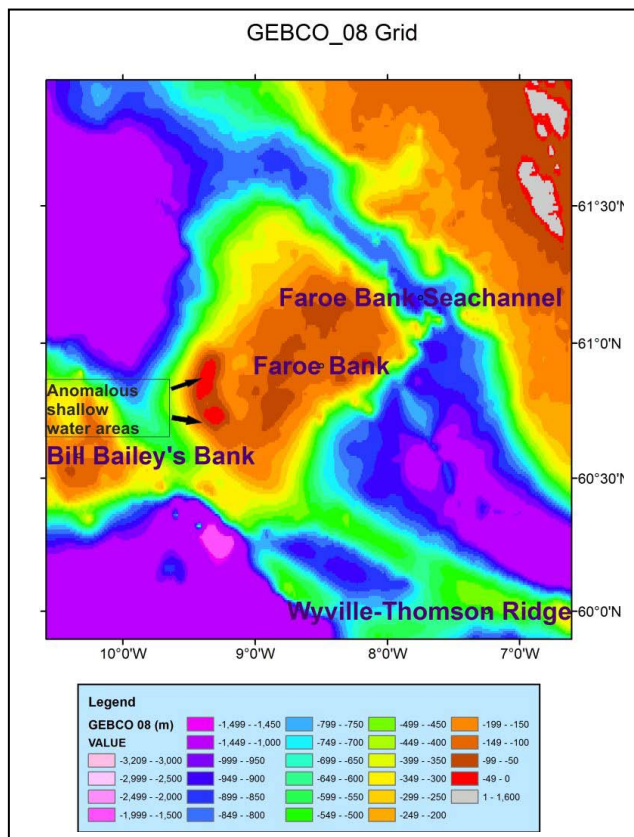


Figure 1

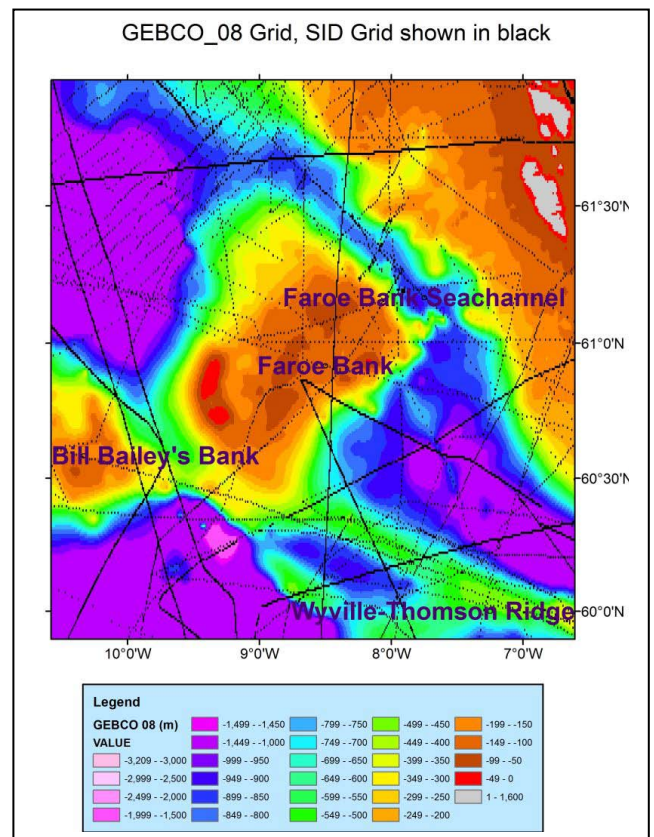


Figure 2