

Explore and Share Bathymetric Data with ArcGIS

Beata Van Esch, Tim Kearns

October 2012

GEBCO Science Day



Esri Maritime



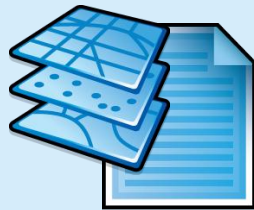
ArcGIS for Maritime: Bathymetry

Business Problem

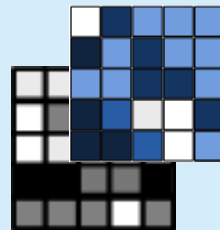
- Large **volumes** of data
- **Unstructured** metadata
- Unable to gain **value** from their data

ArcGIS for Maritime: Bathymetry

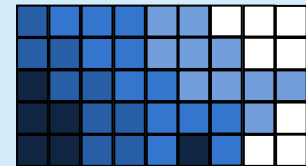
System for the management, discovery and **composite** modeling of bathymetric **data** & **metadata**.



Metadata



**Gridded
Data**



**Composite
Surfaces**

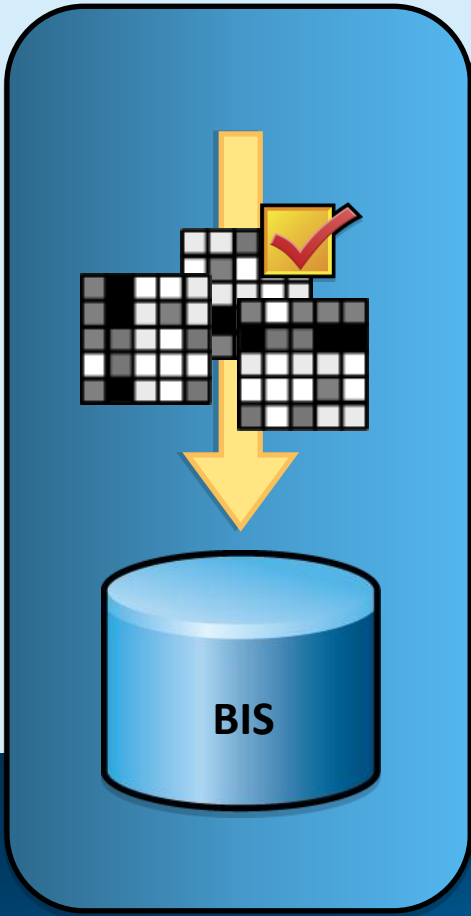
*Intelligent
Metadata*

*Optimized
Storage*

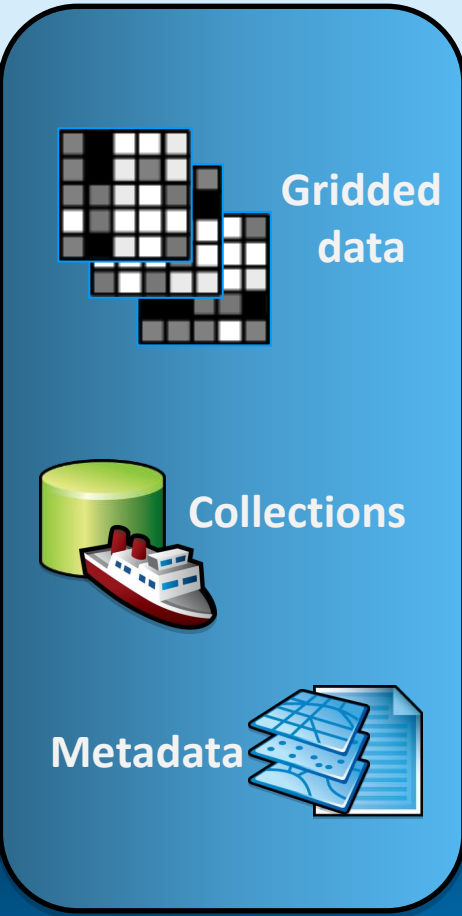
*Interactive
Modeling*

ArcGIS for Maritime: Bathymetry

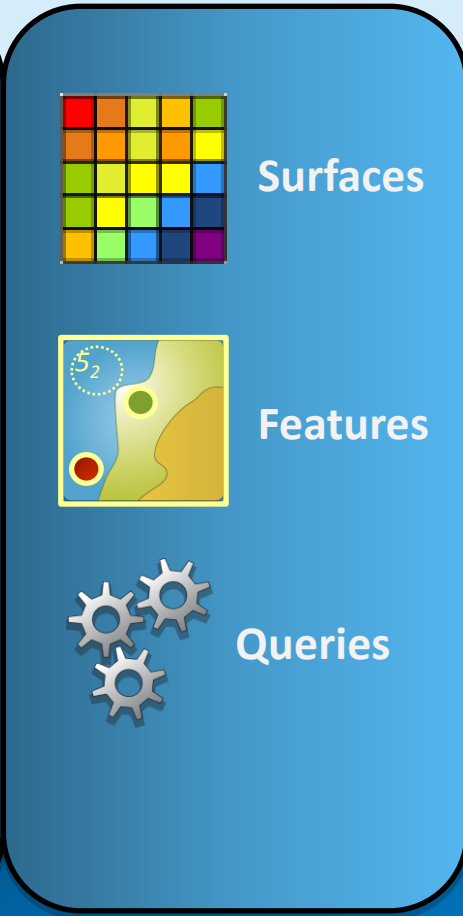
Register



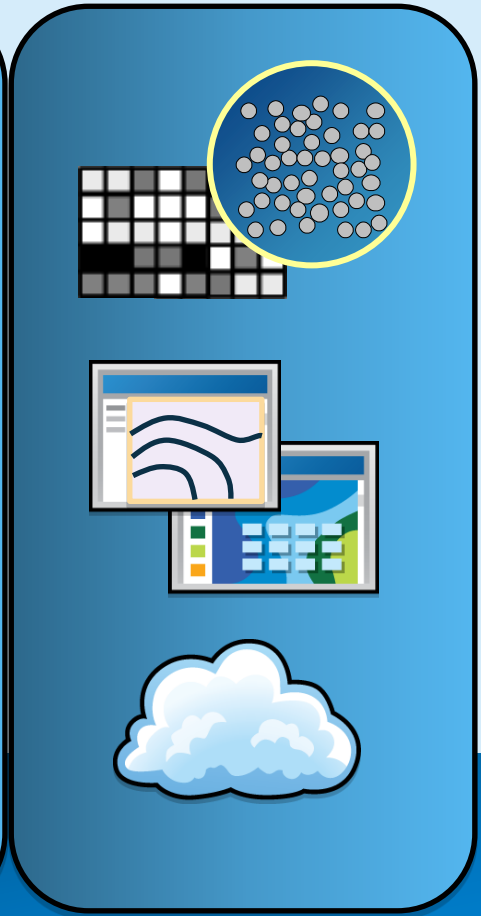
Explore



Compose



Share

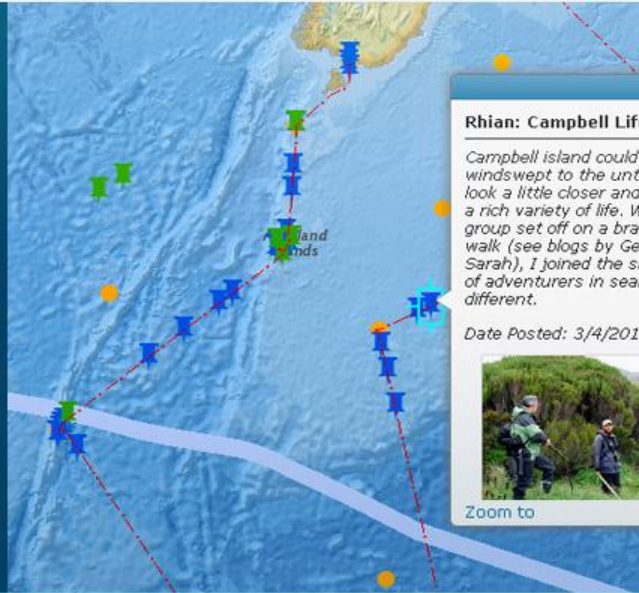


ArcGIS Online

Intelligent Web Maps

Turn your data into information by creating content-rich, beautiful maps that tell your story.

[Get Started >>](#)



Create Mashups

Featured Maps



Light Gray Canvas



Ocean Basemap



Geography, class, and fate: Passengers on the Titanic



Around the world in 80 days

Make a Map >>

Create a map that can be viewed in a browser, desktop or mobile device. Share it on a blog, via email, or embed it in a website.

Create web apps without programming

May 10, 2012
<< Use ArcGIS Online web maps and easy-to-use templates to create a web apps within minutes



Product Roadmap

Expanding Capabilities of Bathymetry beyond the Desktop

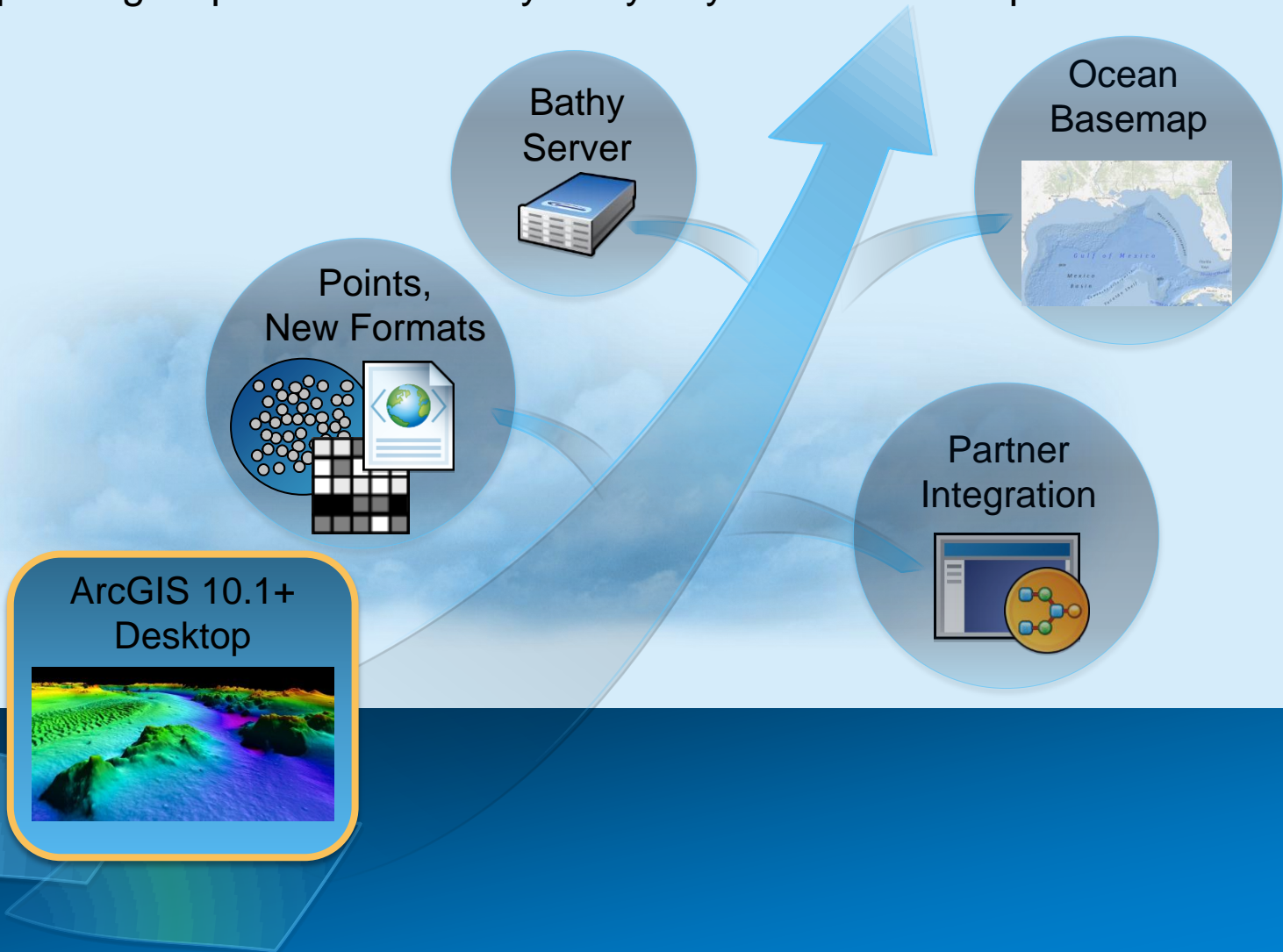
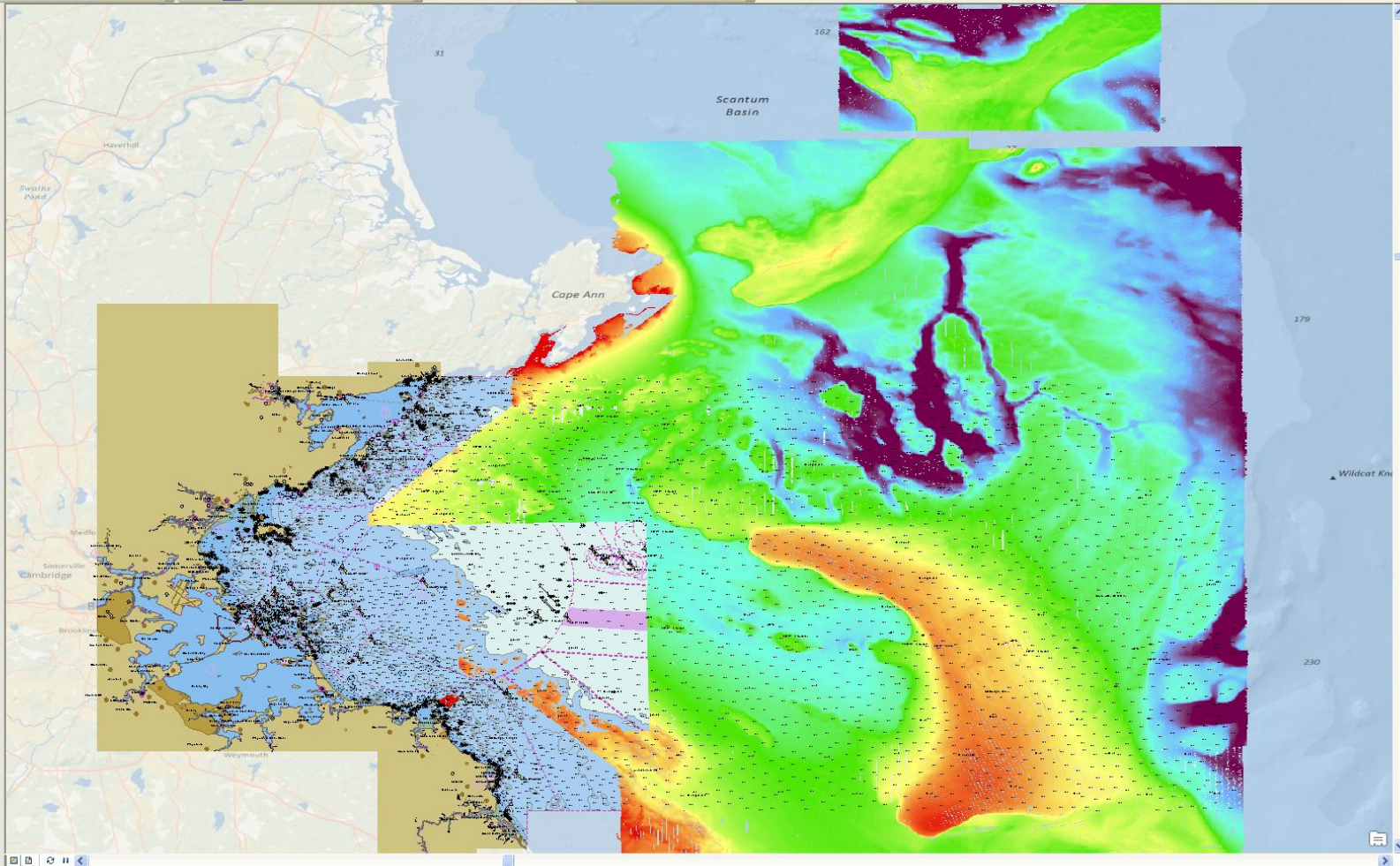
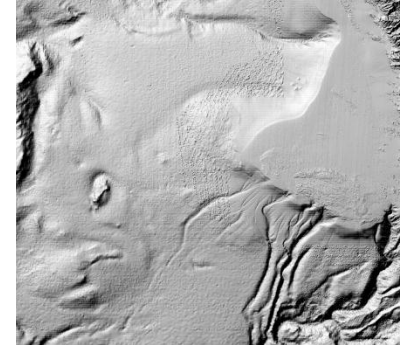
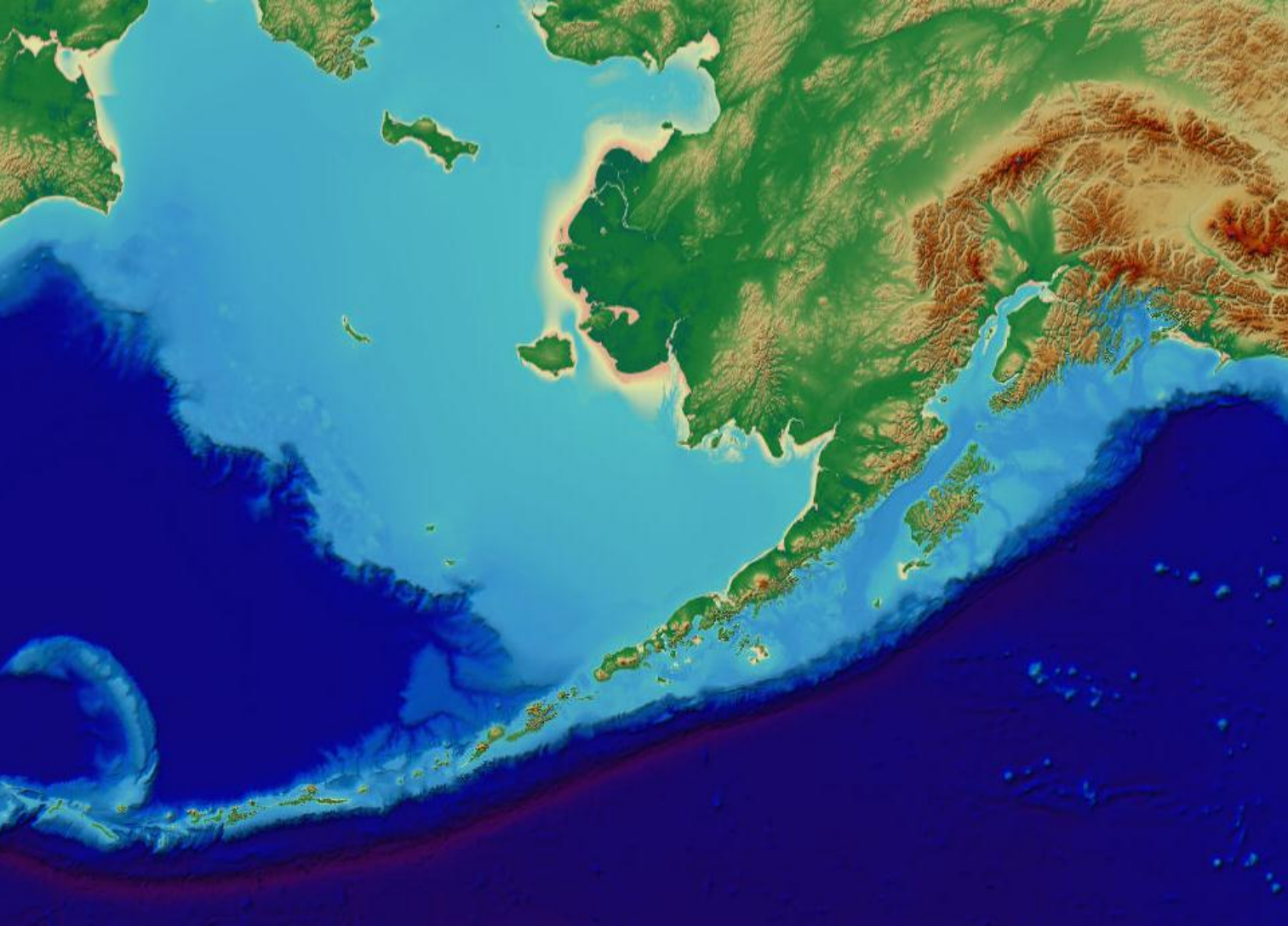


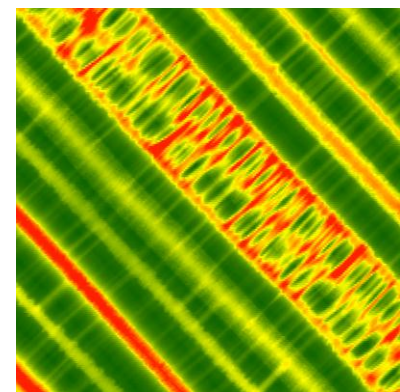
Table of Contents

- Layers
 - BIS
 - Explore Bathymetry Preview
 - Boundary
 - Footprint
 - Image
 - Value
 - High : -9.05806
 - Low : -185.229
 - BDI
 - Boundary
 - Footprint
 - Image
 - Value
 - High : -7.29433
 - Low : -231.345
 - Nautical
 - Ocean Basemap

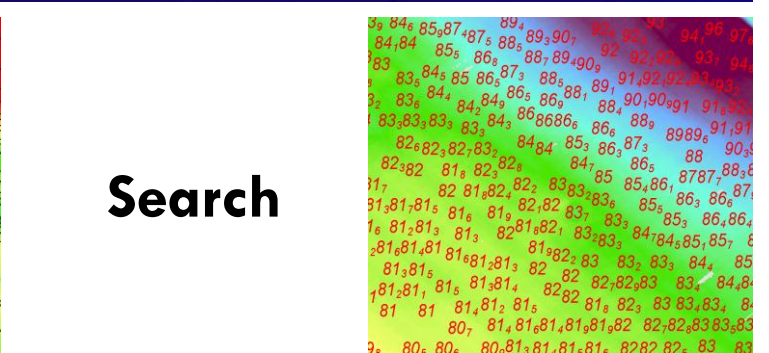




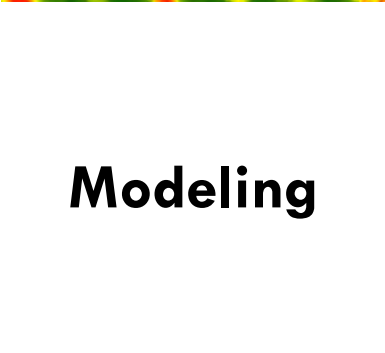
Metadata



Storage



Search



Modeling

Thank you.

