



# Seafloor wonders revealed by sonar beam

- Did the nature know contour bias? -

***Taisei MORISHITA, Yasutaka KATAGIRI  
and Shin TANI***

*Japan Hydrographic & Oceanographic  
Department (JHOD)*

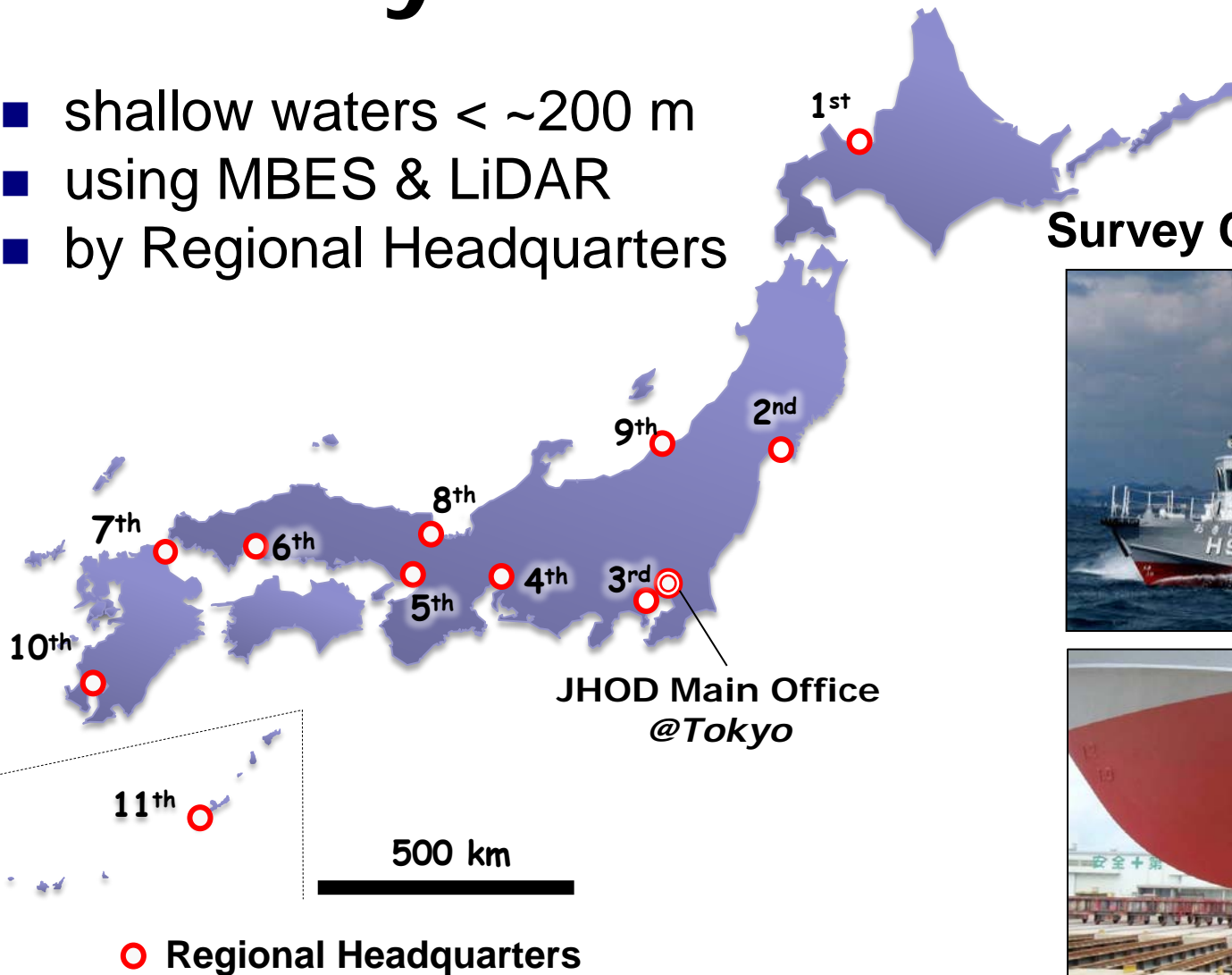
# Coastal mapping campaign by JHOD for **multi-purpose** bathymetry

## Background

- Emerging needs for full-cover bathymetric data of coastal regions
  - Natural disaster mitigation (e.g., Tsunami modeling)
  - Coastal Engineering (e.g., Renewable energy development)
  - Coastal zone management etc.
- Sparse and low-reliable sounding data based on outdated surveys (*in areas of low priorities for safety navigation*)
  - using leadlines and singlebeam echosounders
  - based on horizontal positioning systems with large uncertainty

# Survey outlines

- shallow waters < ~200 m
- using MBES & LiDAR
- by Regional Headquarters

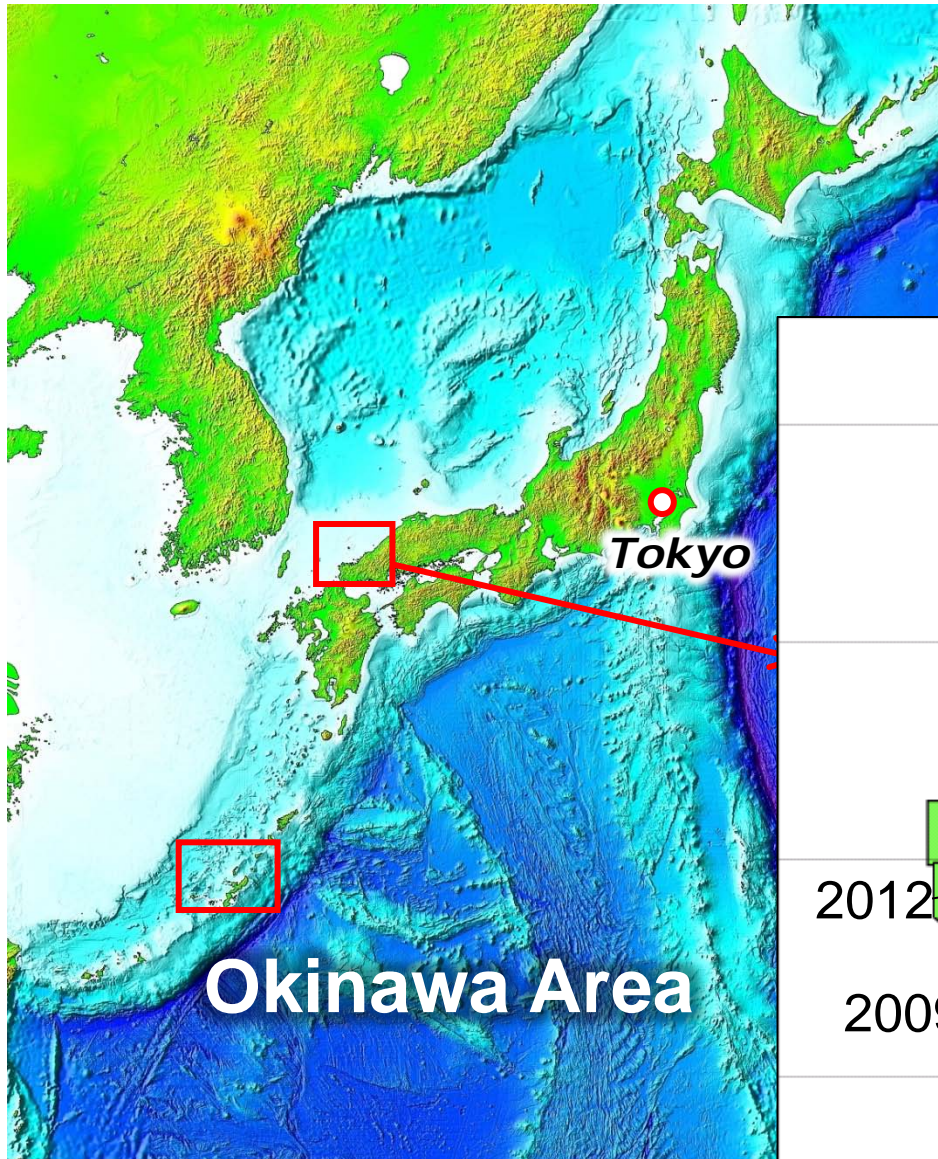


**Survey Crafts (27 ton, 20 m)**

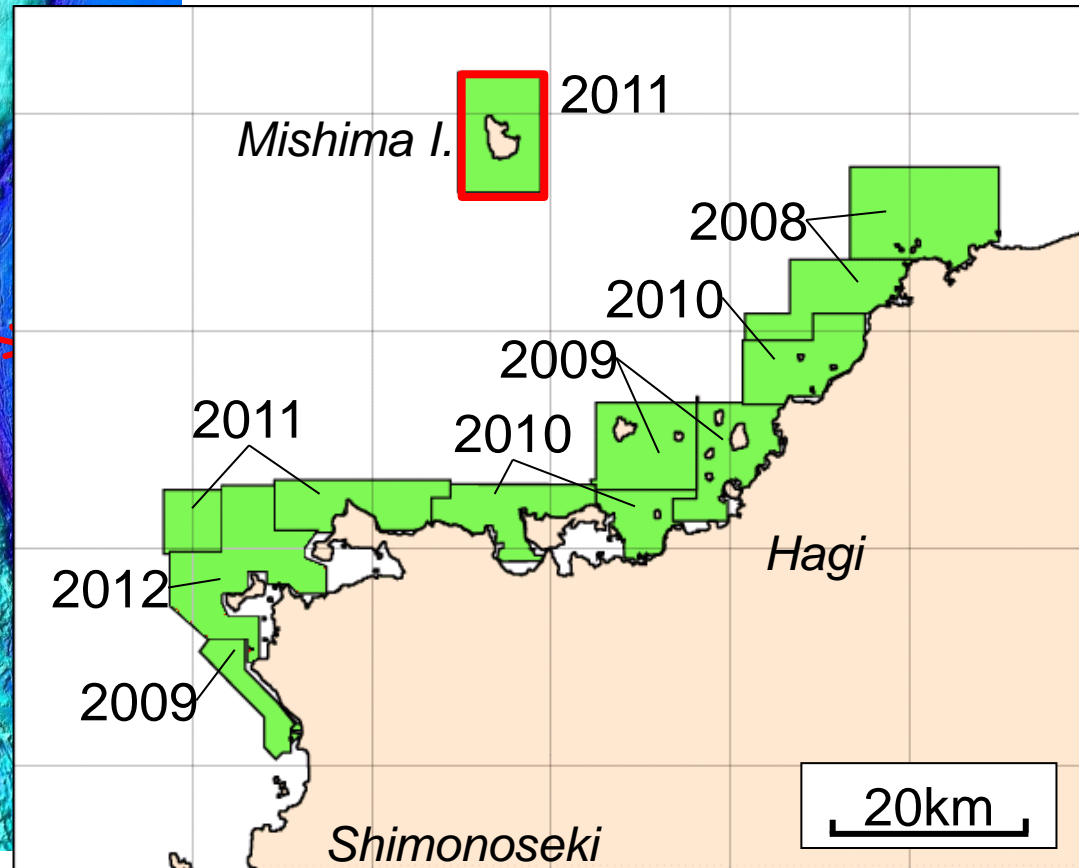


SeaBat7101, 8101 (RESON),  
EM3002 (Kongsberg) , etc.

# Topics of my talk



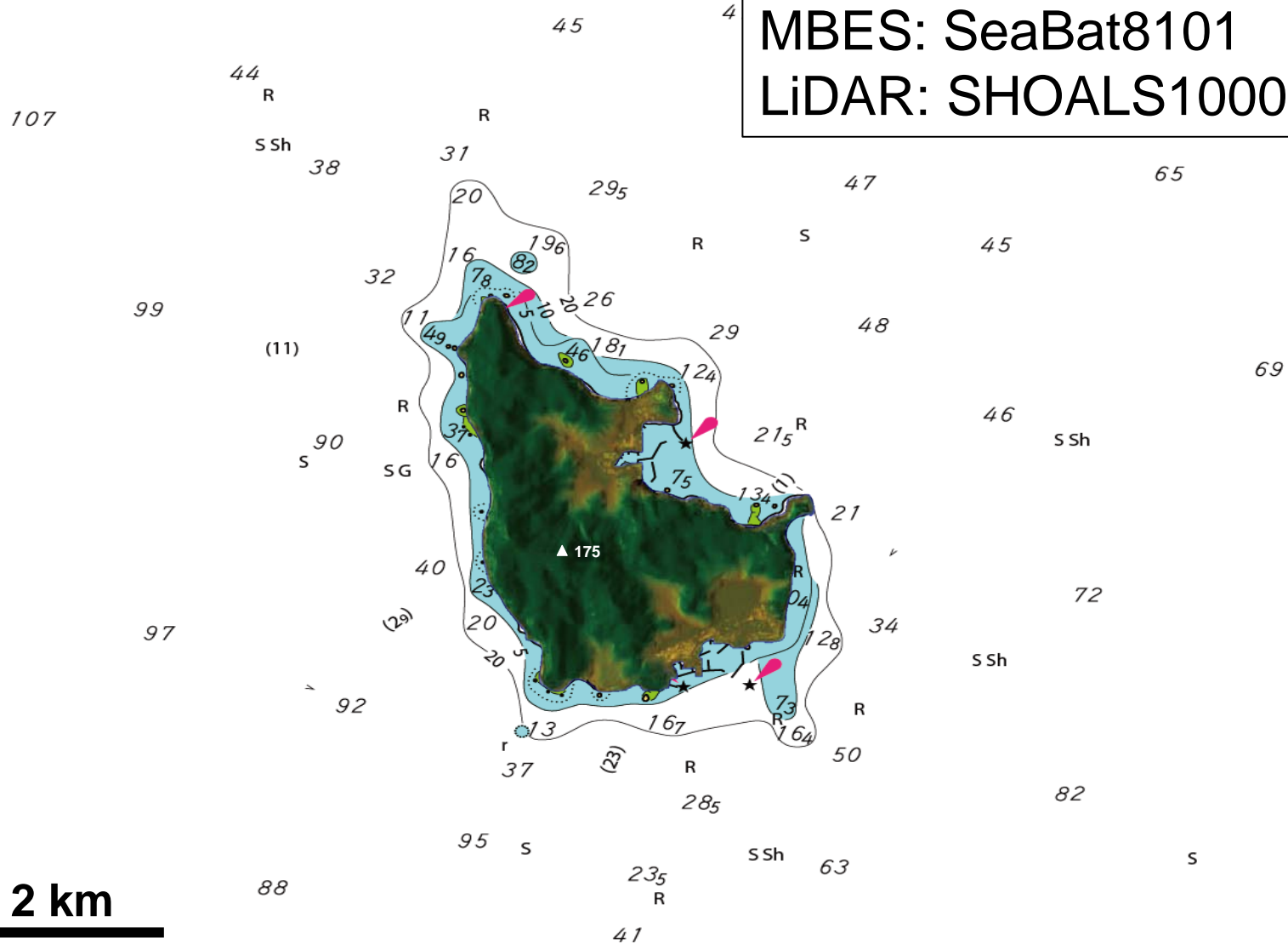
## Mishima I. Area





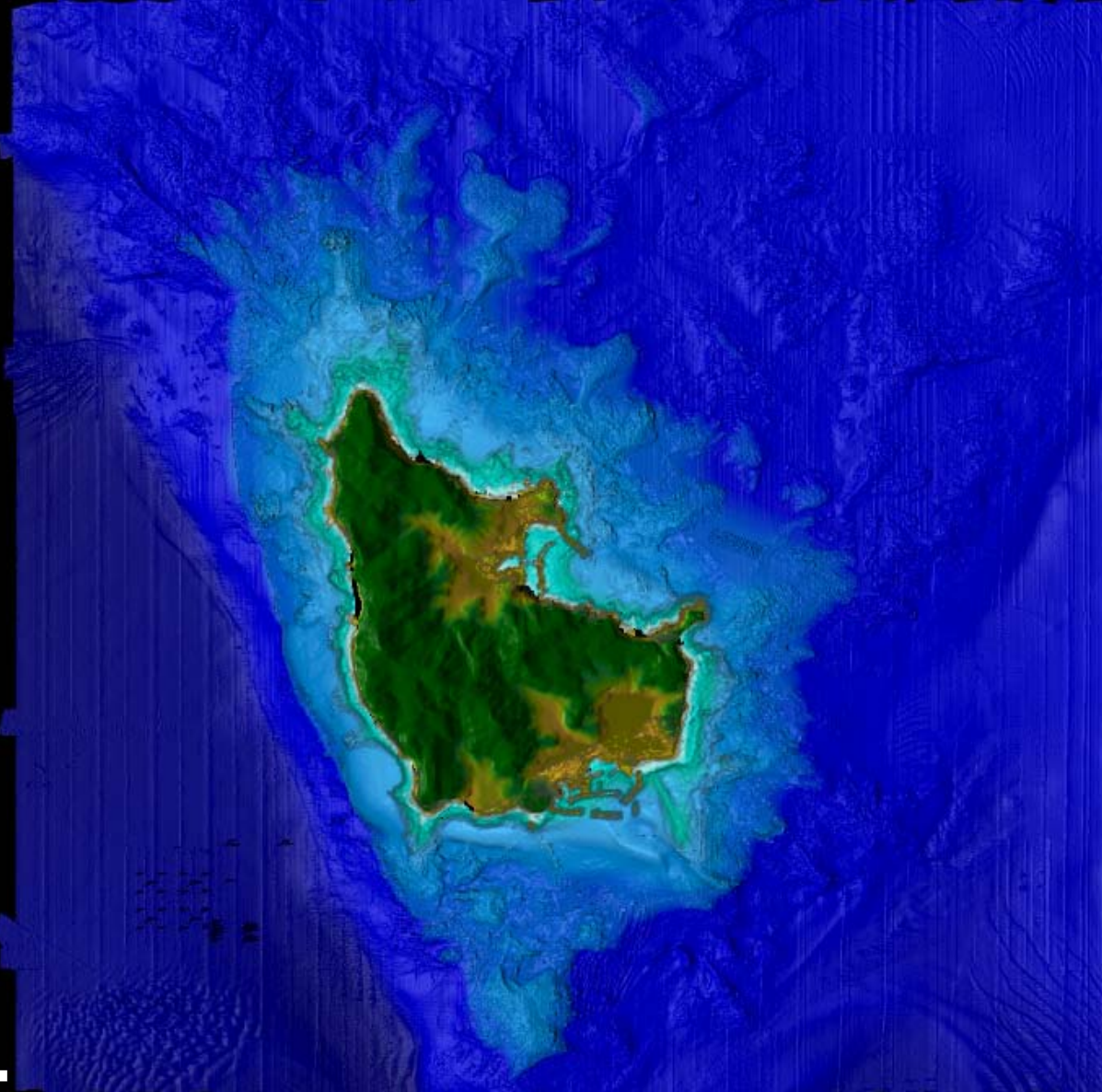
# Survey of Mishima Island Area

MBES: SeaBat8101  
LiDAR: SHOALS1000



# Bathymetry of Mishima I.

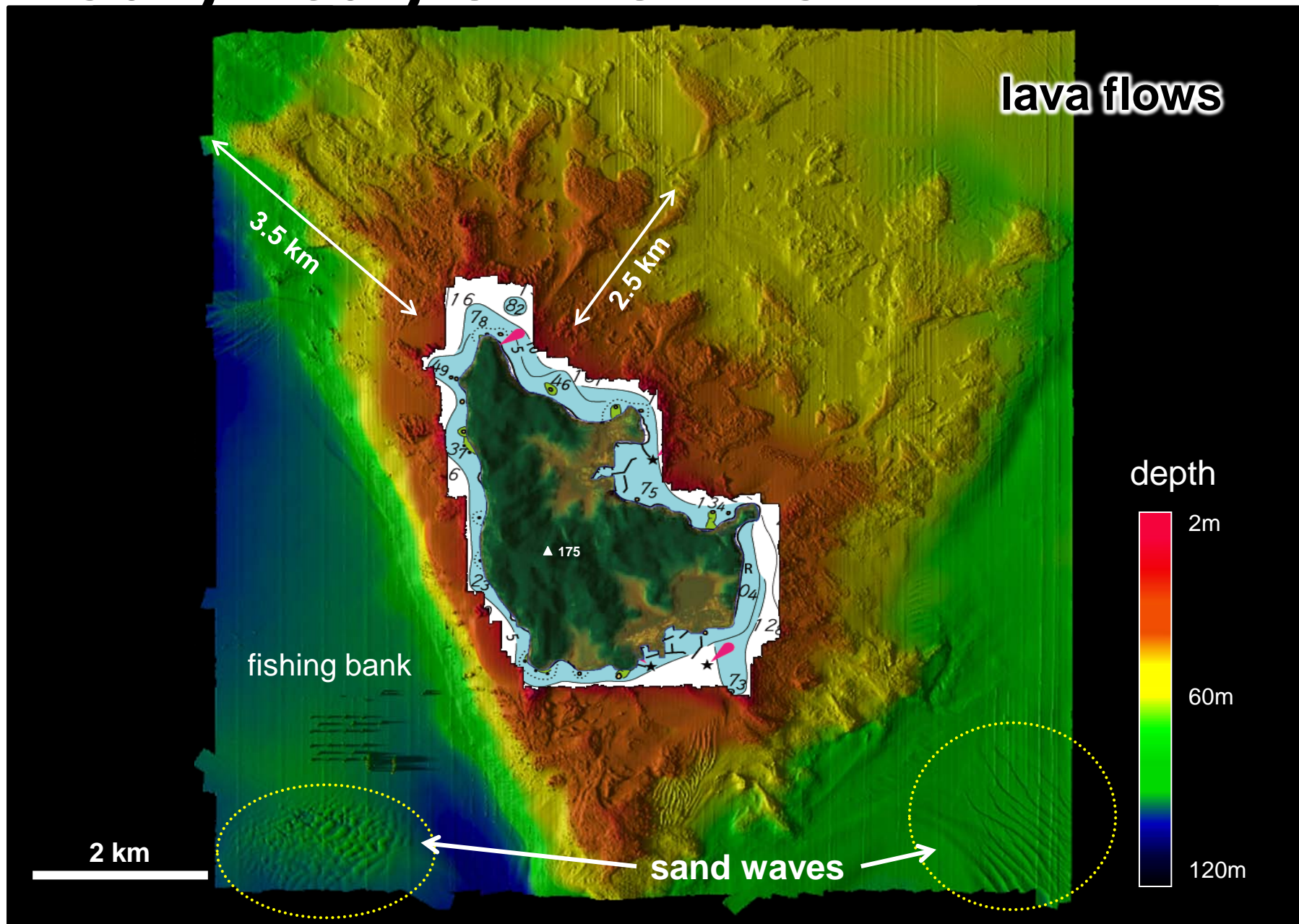
surveyed in 2011



2 km

# Bathymetry of Mishima I.

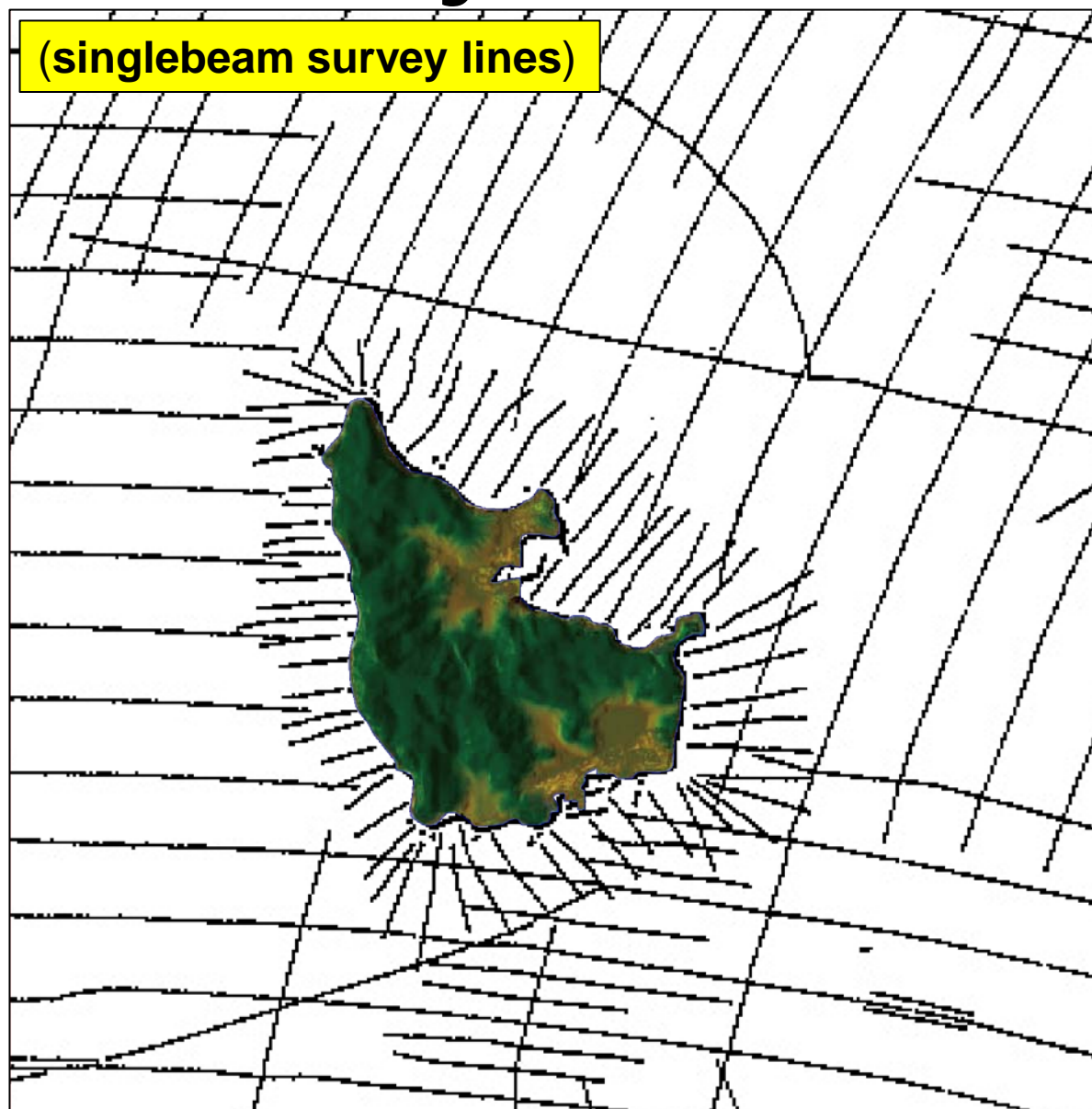
surveyed in 2011





# "Classic" survey

*surveyed in 1978*



# "Classic" survey

surveyed in 1978

(manually-drawn map)

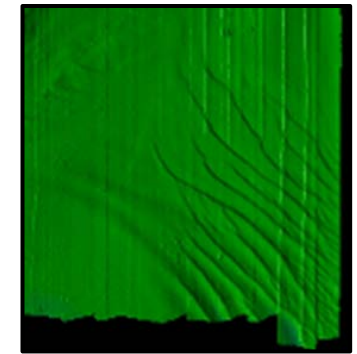
"ridges/spurs"

"lava flows"

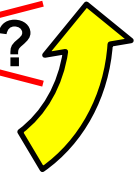
MBES survey



MBES survey

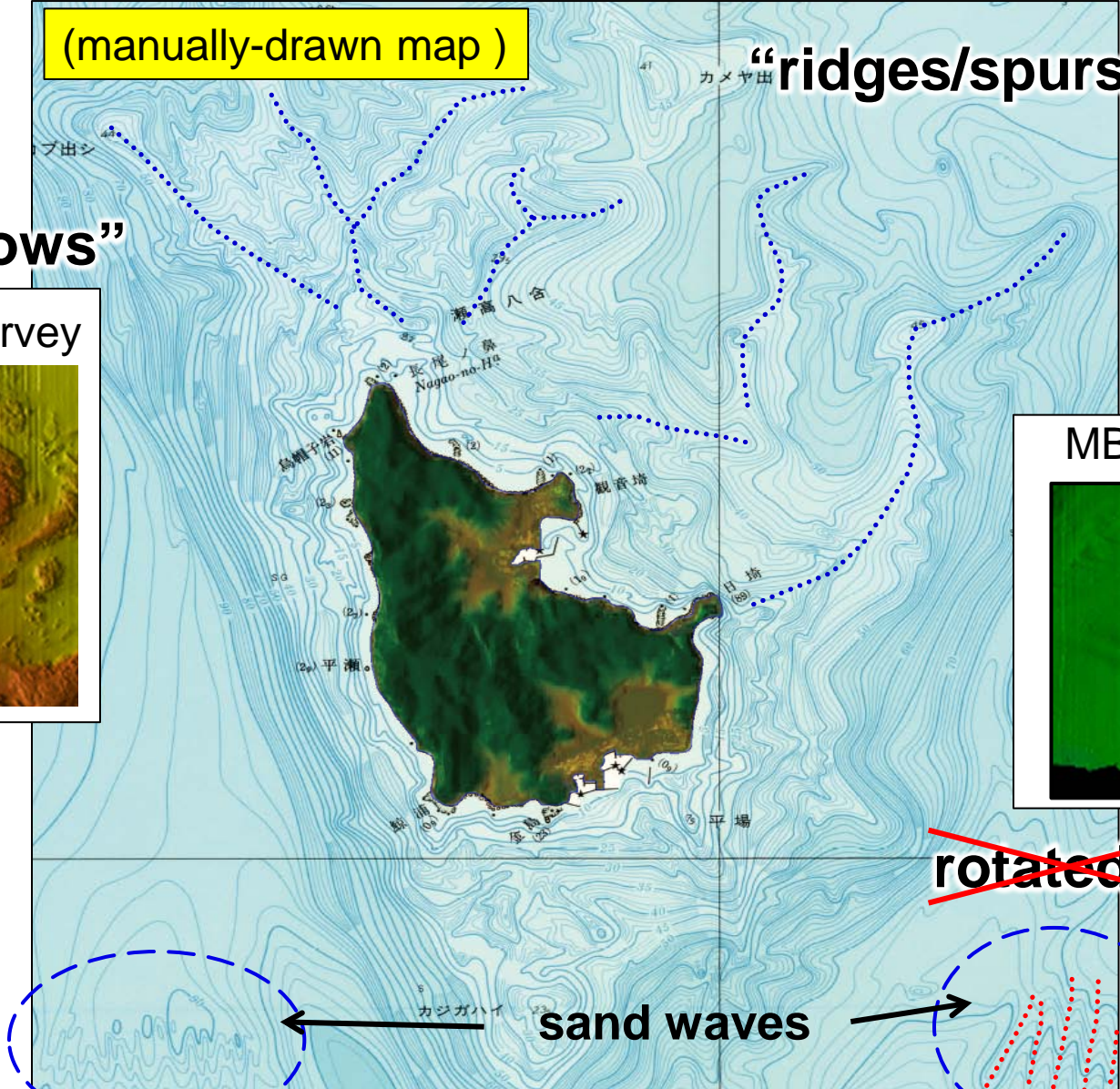


~~rotated??~~

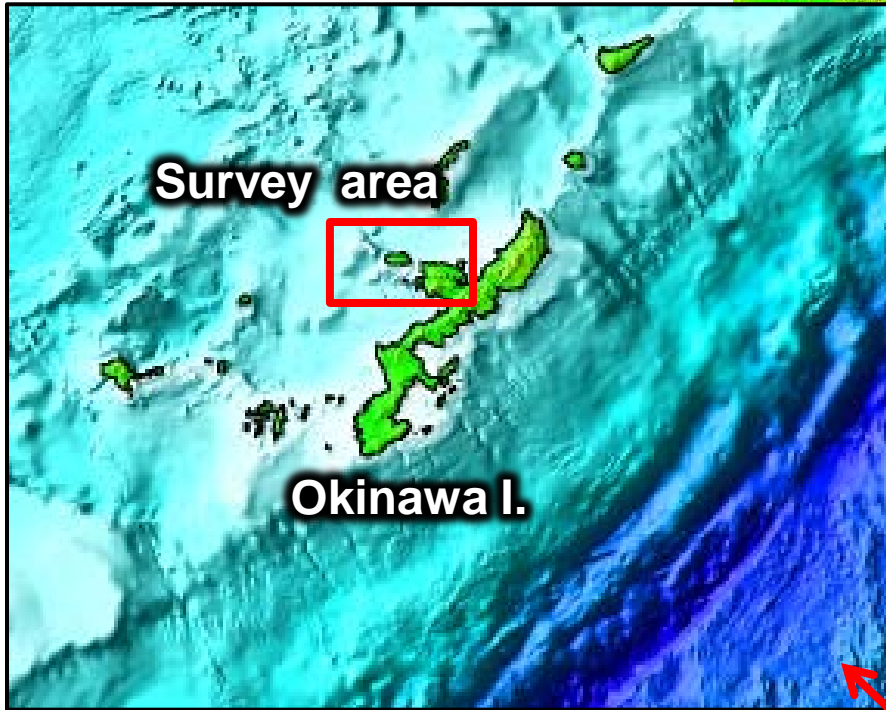
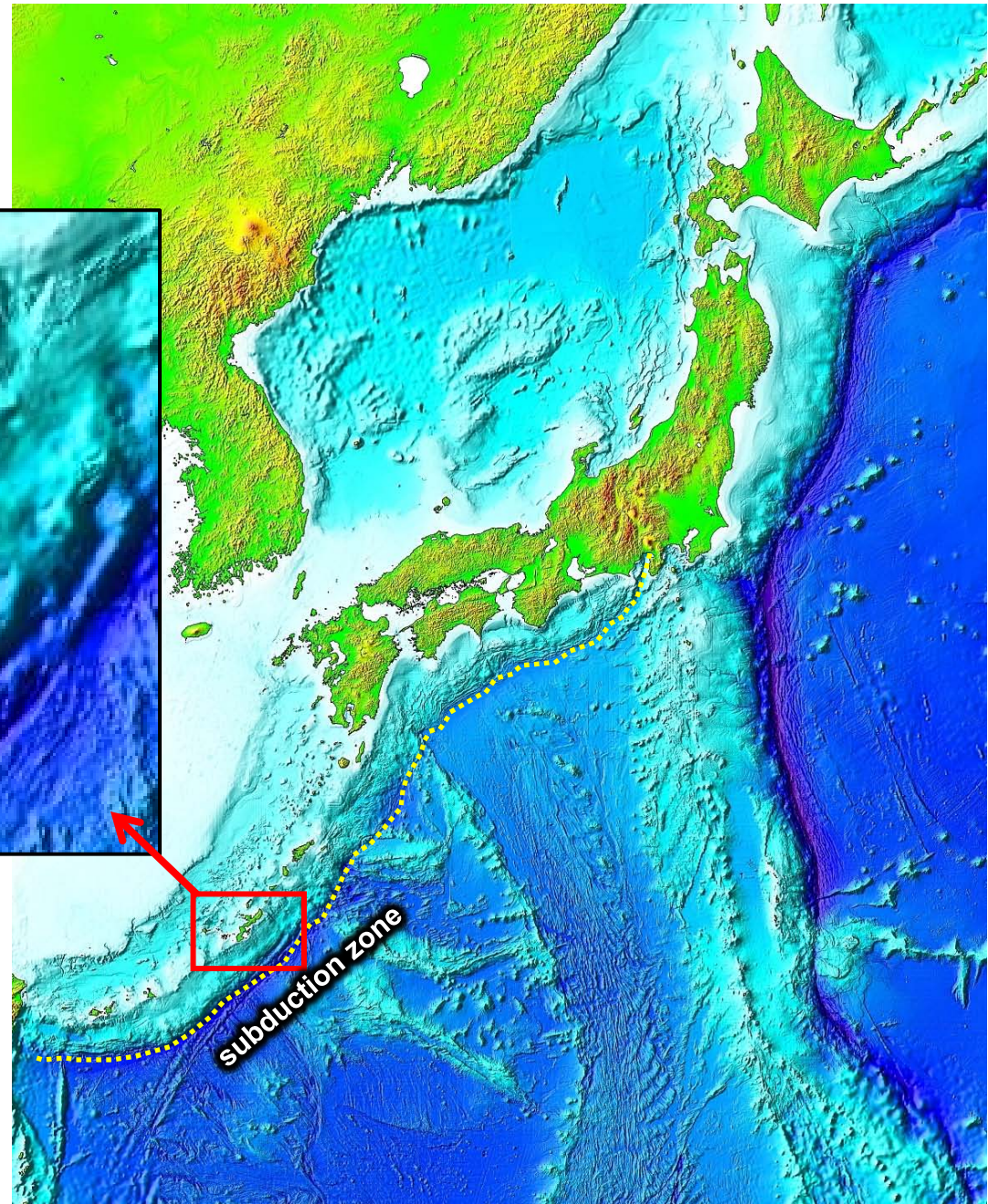


sand waves

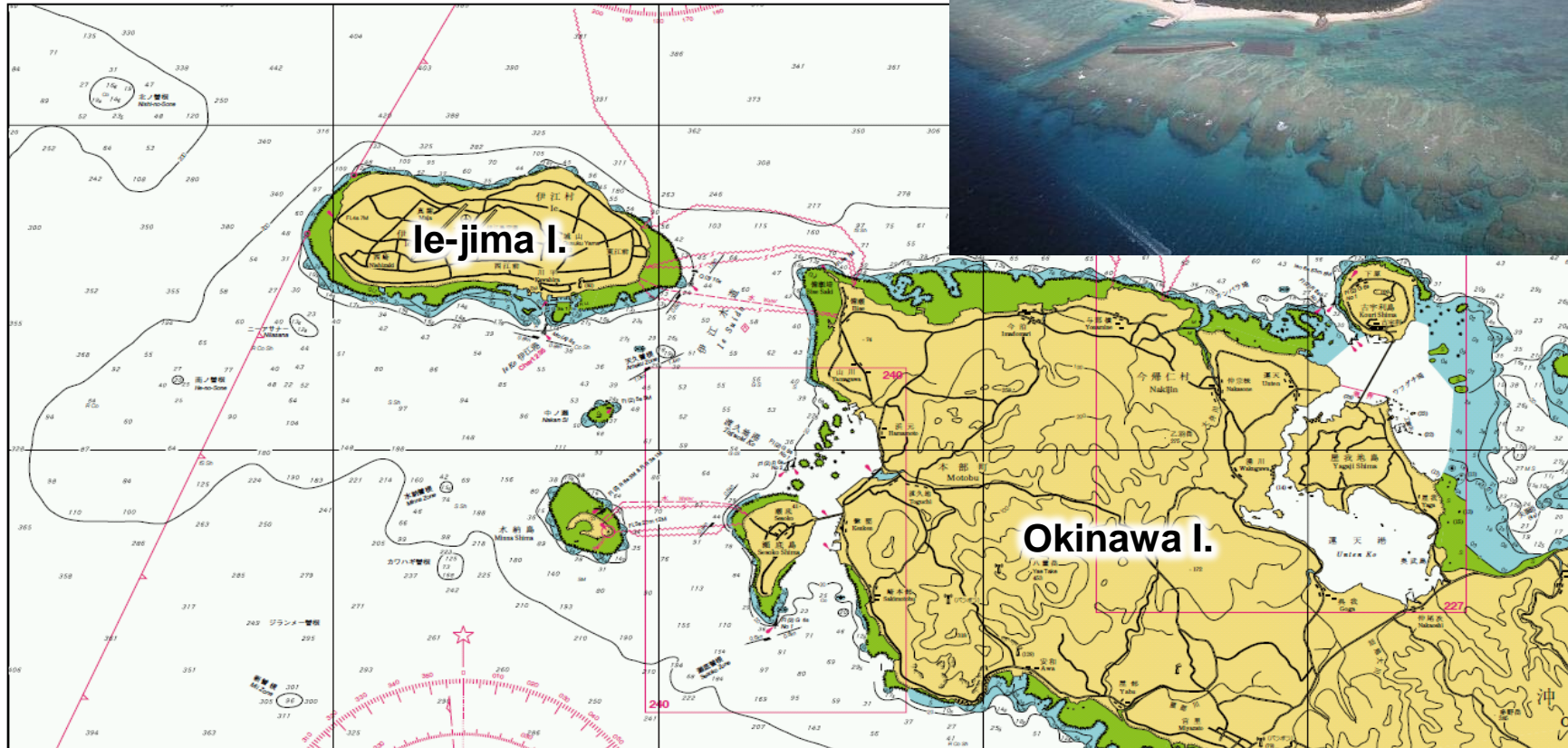
2 km



# Okinawa Area

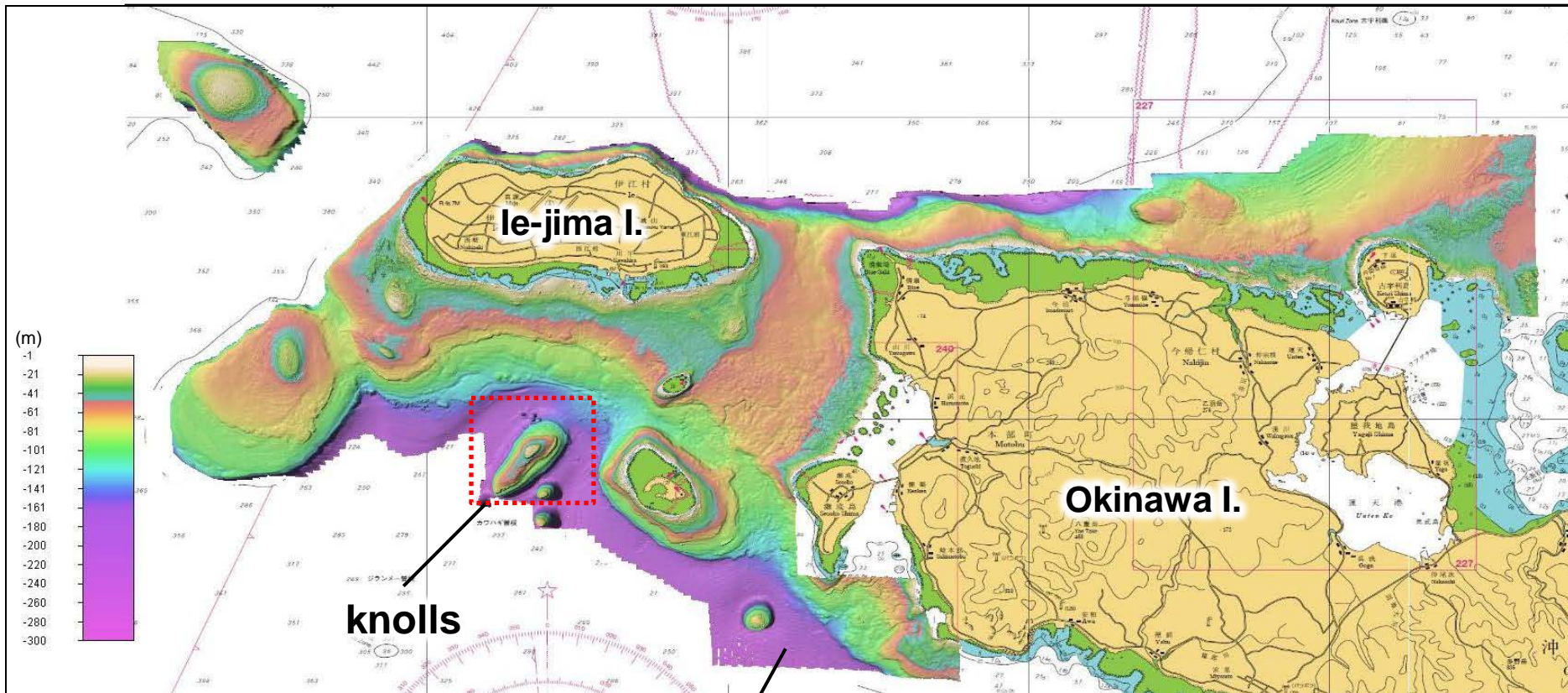


# Okinawa Area



- Coral reef is widely-developed around these lands.
- The MBES mapping surveys were carried out around the NW coast of Okinawa Island in 2011.

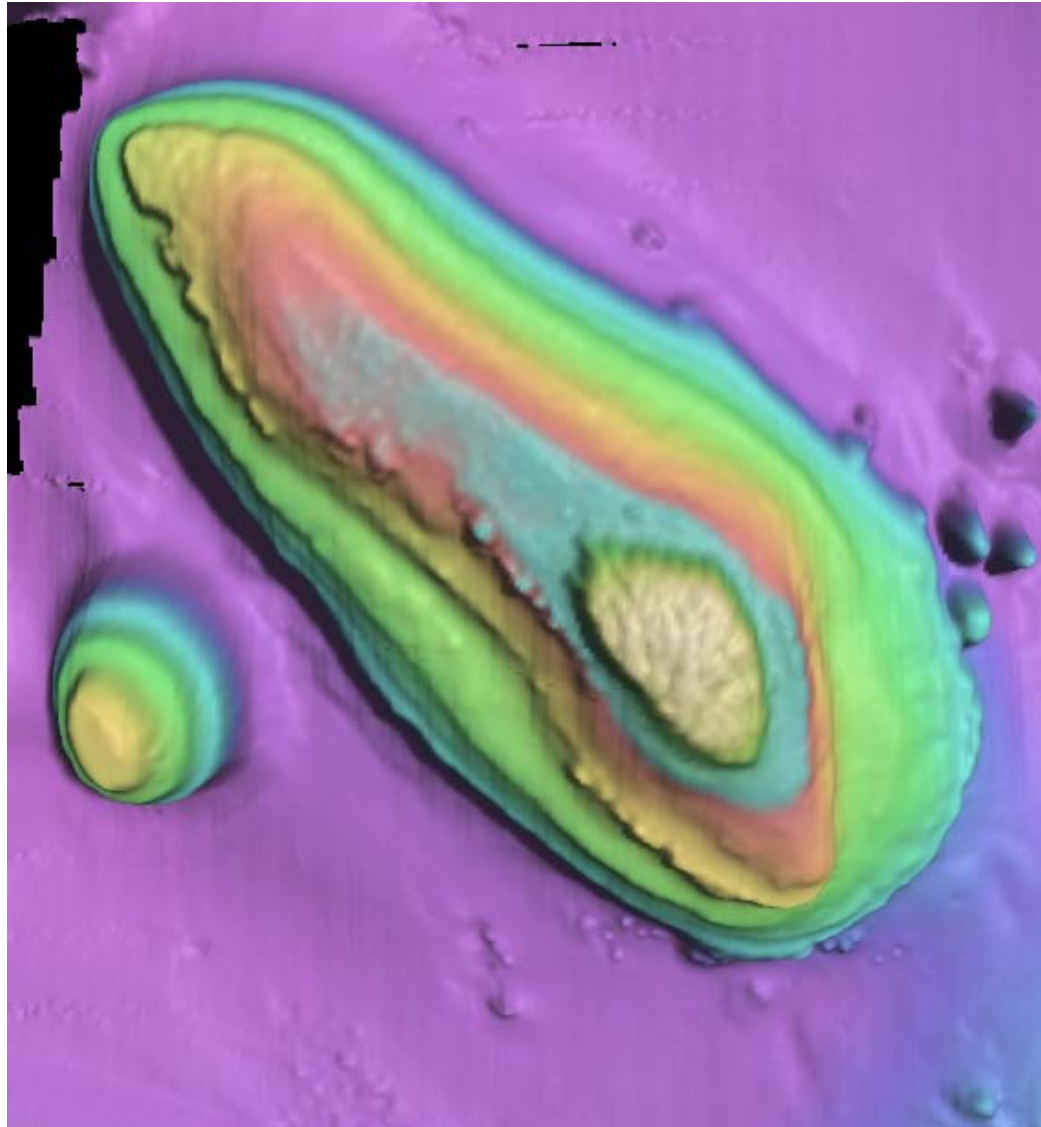
# Okinawa Area



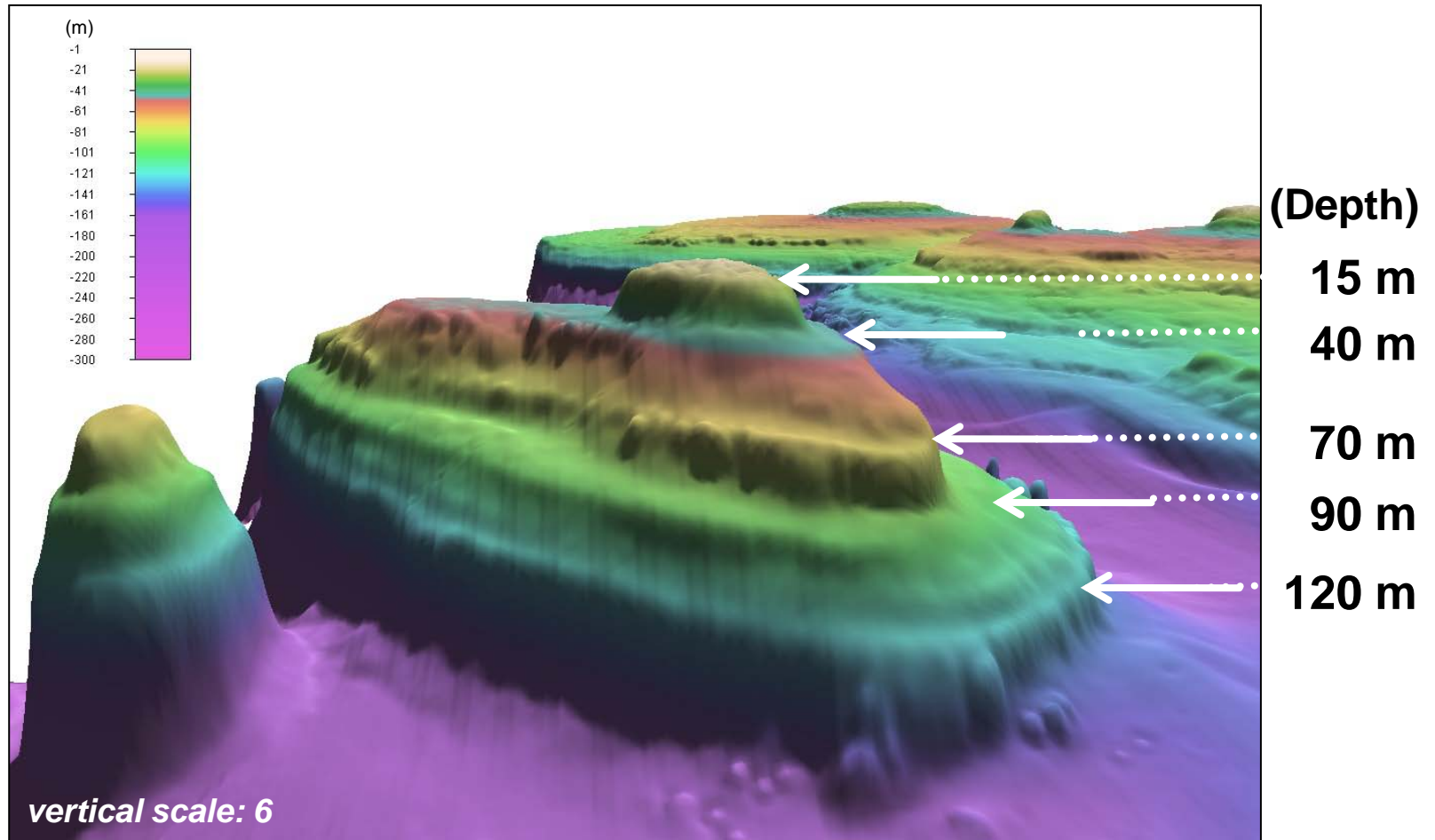
knolls

depth: ~200 m

# Contour-biased??

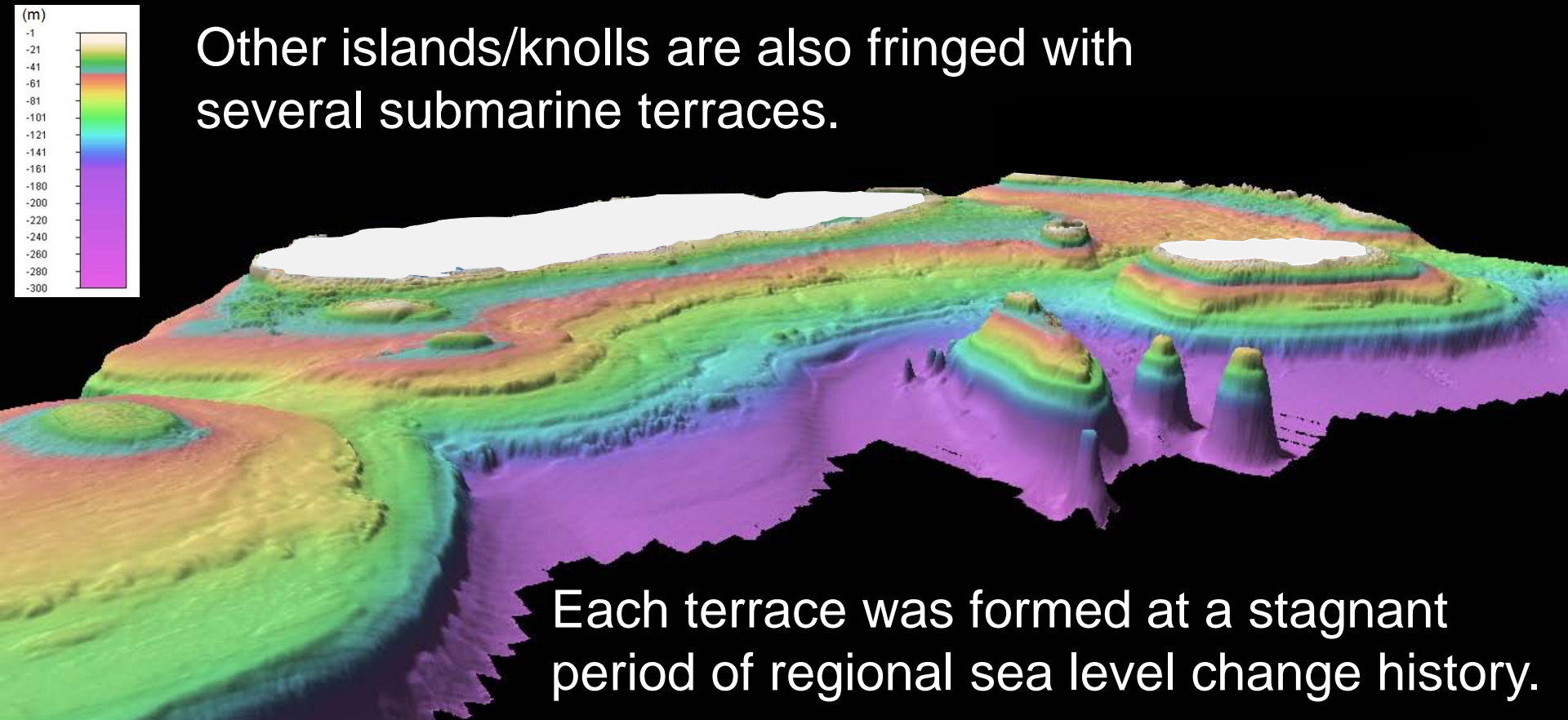


# Submarine reefal terraces



# Submarine reefal terraces

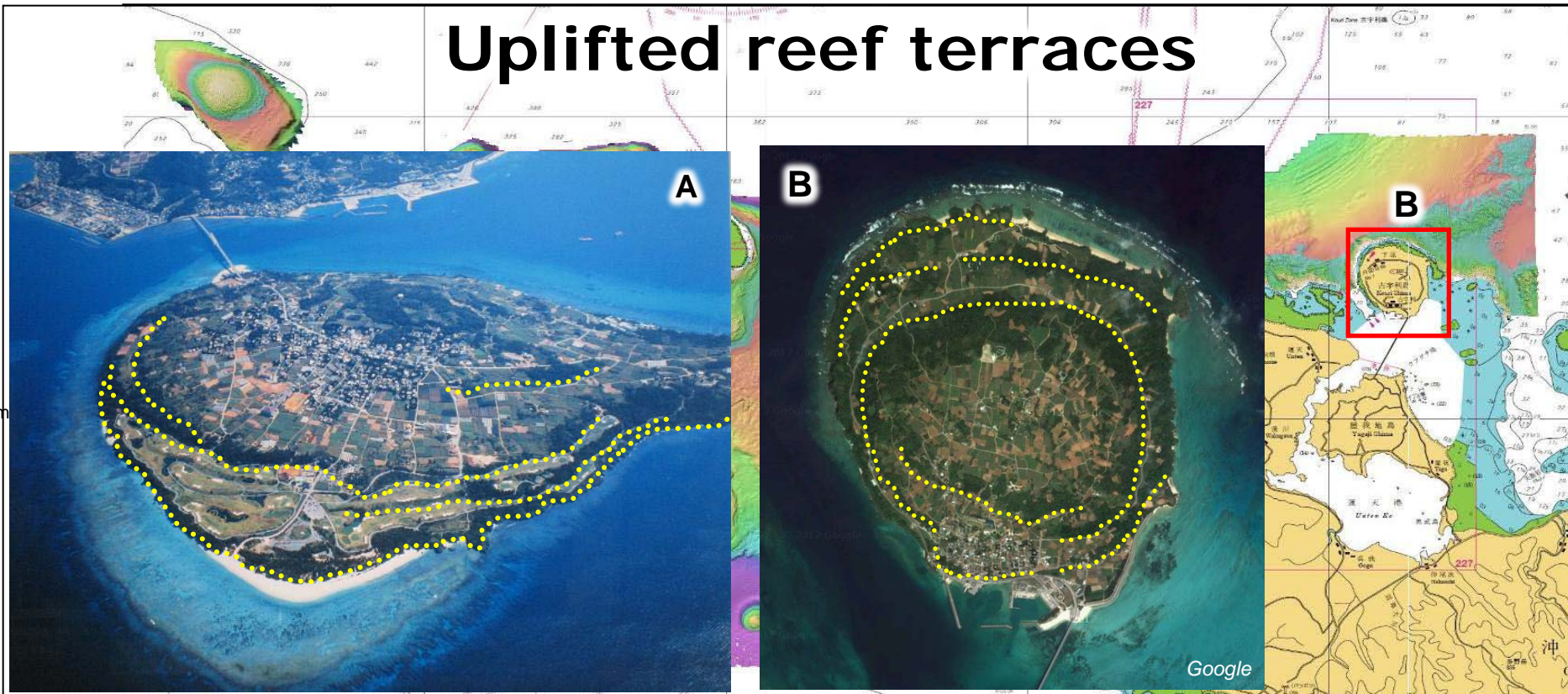
Other islands/knolls are also fringed with several submarine terraces.



Each terrace was formed at a stagnant period of regional sea level change history.



# Uplifted reef terraces



- Many of geo-chronological studies focus on these uplifted terraces, which may records sea levels during Quaternary.
- For understanding sea level change history, studies on submarine terraces are also necessary.



# Summary

- High-resolution and full-coverage bathymetric surveys reveal detailed seafloor morphology, which provides us with important implications on the geological/ geomorphological processes.
- The bathymetric data will contribute to safety navigation but also science and other maritime activities.

**Thank you very much!**

