



AusSeabed - Bringing the seabed to the surface

Progress Update

6th November, GEBCO Symposium, Portsmouth

Aero Leplastrier* and Kim Picard
Geoscience Australia





Australian Government
Geoscience Australia



Environment,
Land, Water
and Planning



To improve the coverage, accessibility and



Australian Government



community.

Our Vision

By 2030, all available seabed mapping data within the Australian marine estate will be readily and openly available, and new data acquisition will take into account the needs of a wide range of users.

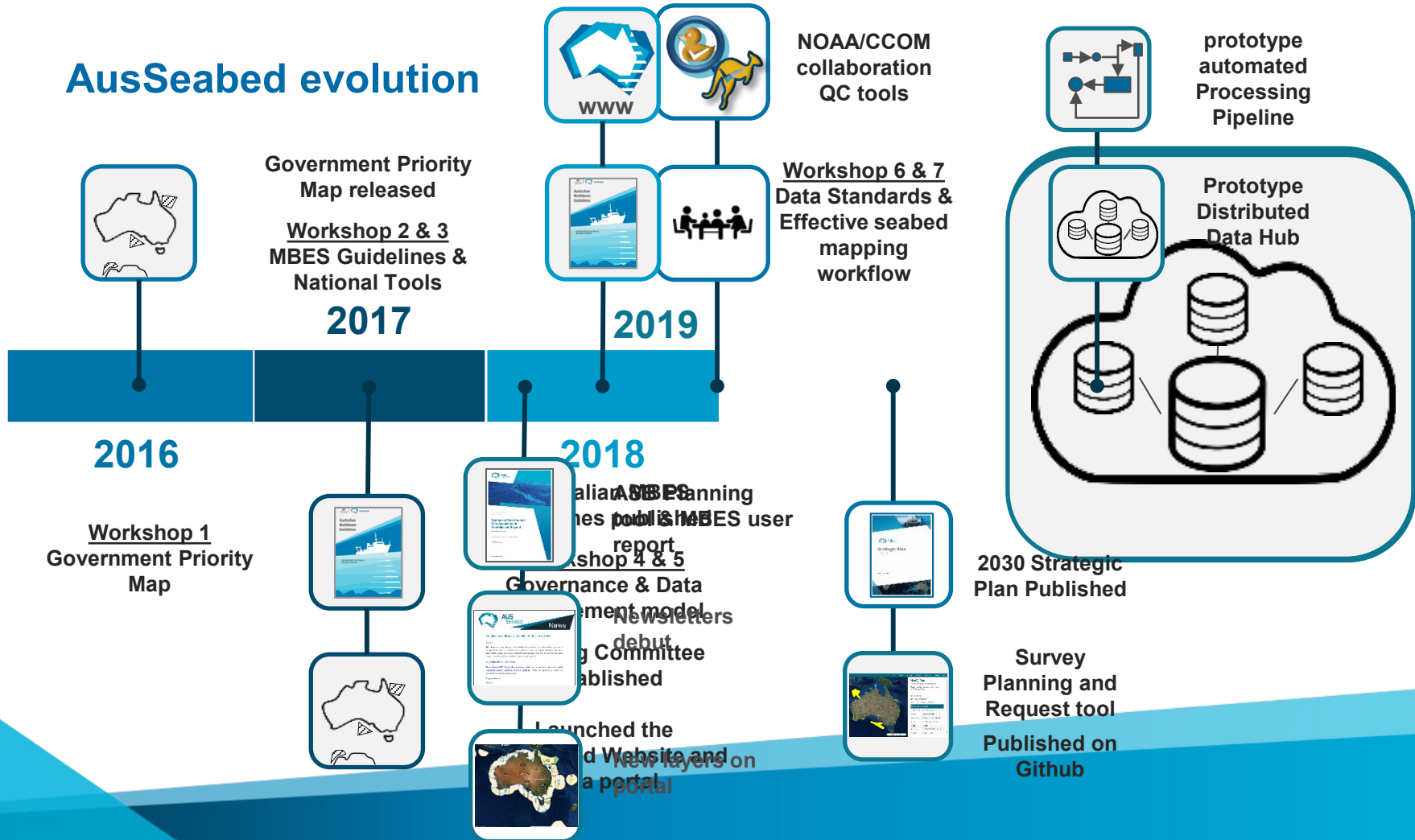


AUS SEABED



FRONTIER S I > iXblue

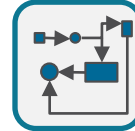
AusSeabed evolution



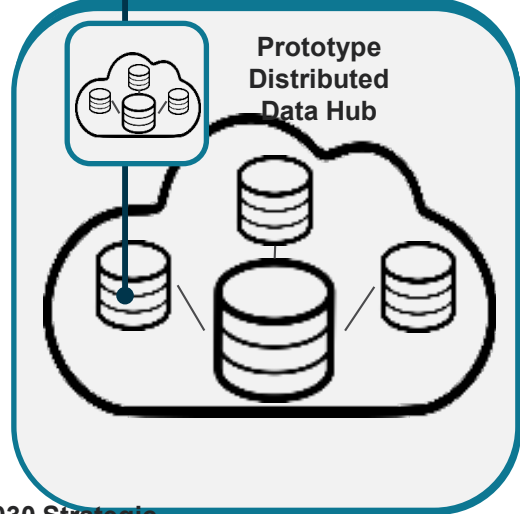
NOAA/CCOM
collaboration
QC tools



Workshop 6 & 7
Data Standards &
Effective seabed
mapping
workflow



prototype
automated
Processing
Pipeline



Prototype
Distributed
Data Hub

AusSeabed Trajectory

Becoming Operational

2020

Data Hub MVP1
Bathy & MBES-centric

1. Survey Planning
2. QA & Packaging
3. Automated cloud processing pipeline
4. Distributed Data Warehouse
5. Discovery Portal (GMRT)

Broadening our Reach

2021

Data Hub MVP2
Crowd-sourced (SBES) &
major bathy types

Seamless Topo & Bathy

Gridding on the fly from
point cloud

Integration with
AODN &
Research portal
Seamap Australia
(habitat for policy-making)

Ensuring Endurance

2022

Open source
processing pipeline

Integrated & Distributed
Data Hub
(code through **GitHub**)

Plan for **other data types:**
Backscatter, Sediments,
SBP, WC

Call for collaborators

Please get in touch if you would like to contribute to any of the following pieces of work:

- Survey planning and prioritisation tools
- Automated QA checks
- Automated processing for bathymetry
- Distributed Data Warehousing infrastructure

AusSeabed is adopting open-source technologies, formats and data to facilitate adaption and adoption at all scales

Thank you

This presentation reflects the efforts from the many Australian and international collaborators to AusSeabed.

Further information

Visit: www.usseabed.gov.au

Or Email: usseabed@ga.gov.au

