



Harnessing the Power of the Crowd - Activating the Alumni Network , Distributing Data Processing and QA/QC in the Atlantic/Indian Region -

Tinah Martin

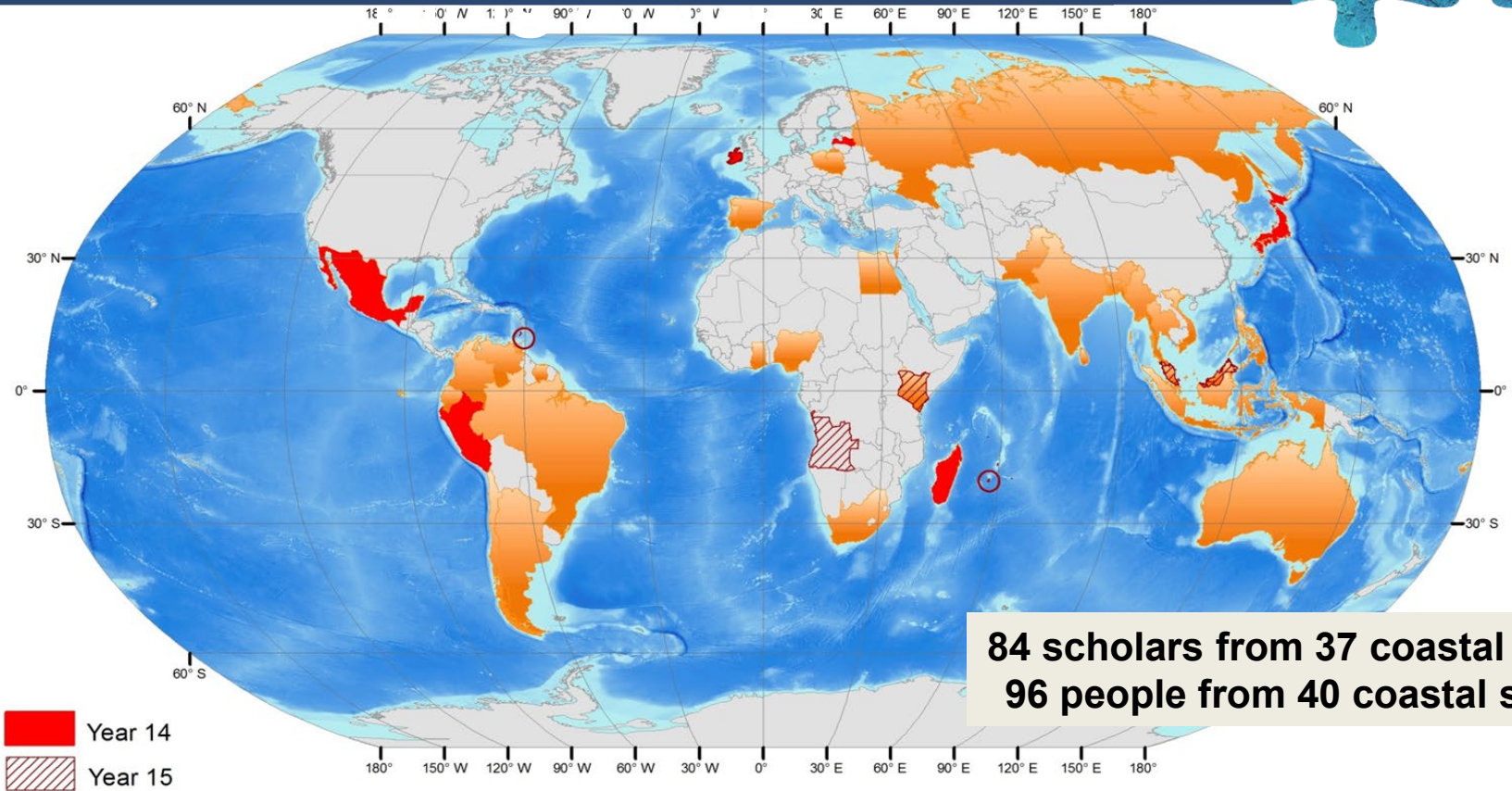
Lamont-Doherty Earth Observatory, Columbia University

GEBCO Training Program Alum Year13

Lamont-Doherty Earth Observatory
COLUMBIA UNIVERSITY | EARTH INSTITUTE

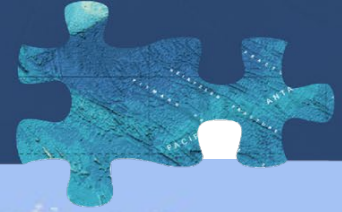


First growing community of seafloor mappers



84 scholars from 37 coastal states
96 people from 40 coastal states

Alumni from the Atlantic and Indian Oceans Region



Data sharing
Collaboration
Awareness rising
Data QA/QC



- RMC Meetings

- 11th WIOMSA Symposium

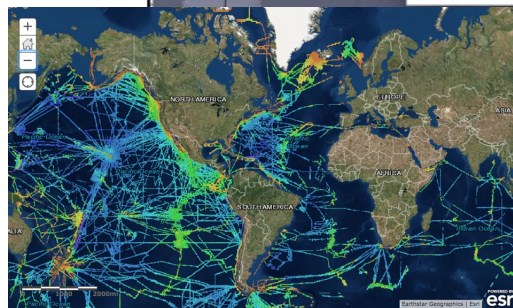
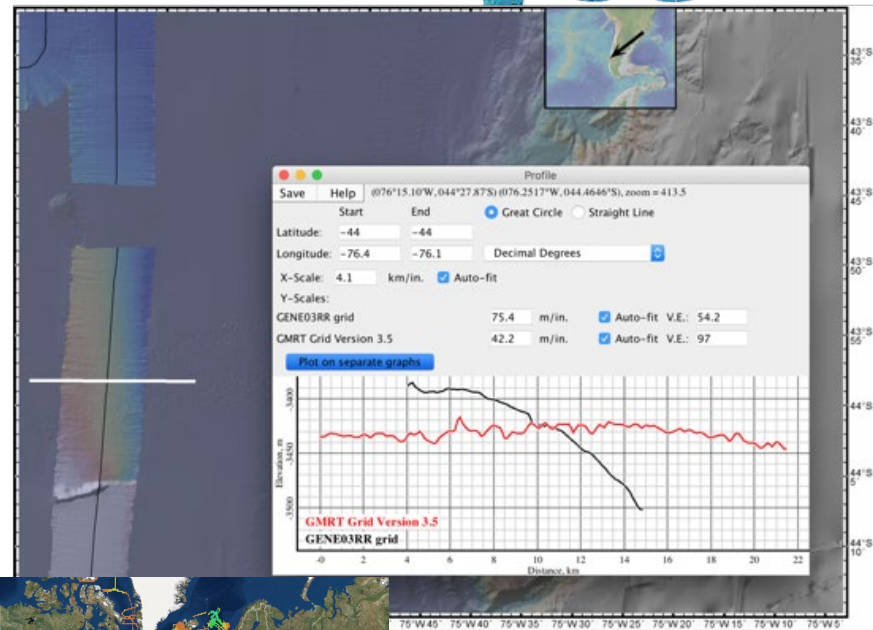
- Fisheries Conference

- **AGU Fall 2019**

A holistic approach to map the gaps



- Distribute data processing
- Leverage GMRT to engage the crowd for
 - QA/QC of *sparse multibeam data*
 - through *common tiling scheme*
 - *quantitative comparison with regional synthesis*





- **U**NDERSTAND the status of seabed mapping in your Region
- **N**ETWORK with the regional community of stakeholders
- **I**DENTIFY gaps in your region in terms of bathymetric data
- **T**ALK about needs with respect to use of seabed mapping data
- **E**NGAGE with other Alumni of the Nippon Foundation - GEBCO Capacity Building Program