

The GEBCO Cookbook: A Progress Report

K. M. Marks

NOAA Laboratory for Satellite Altimetry, Silver Spring, Maryland, USA



At the GEBCO 25th meeting of the Technical Sub-Committee on Ocean Mapping (TSCOM) in September, 2009, a "Cookbook Working Group" was formed to write a "cookbook" to nurture and guide nascent regional mapping projects.

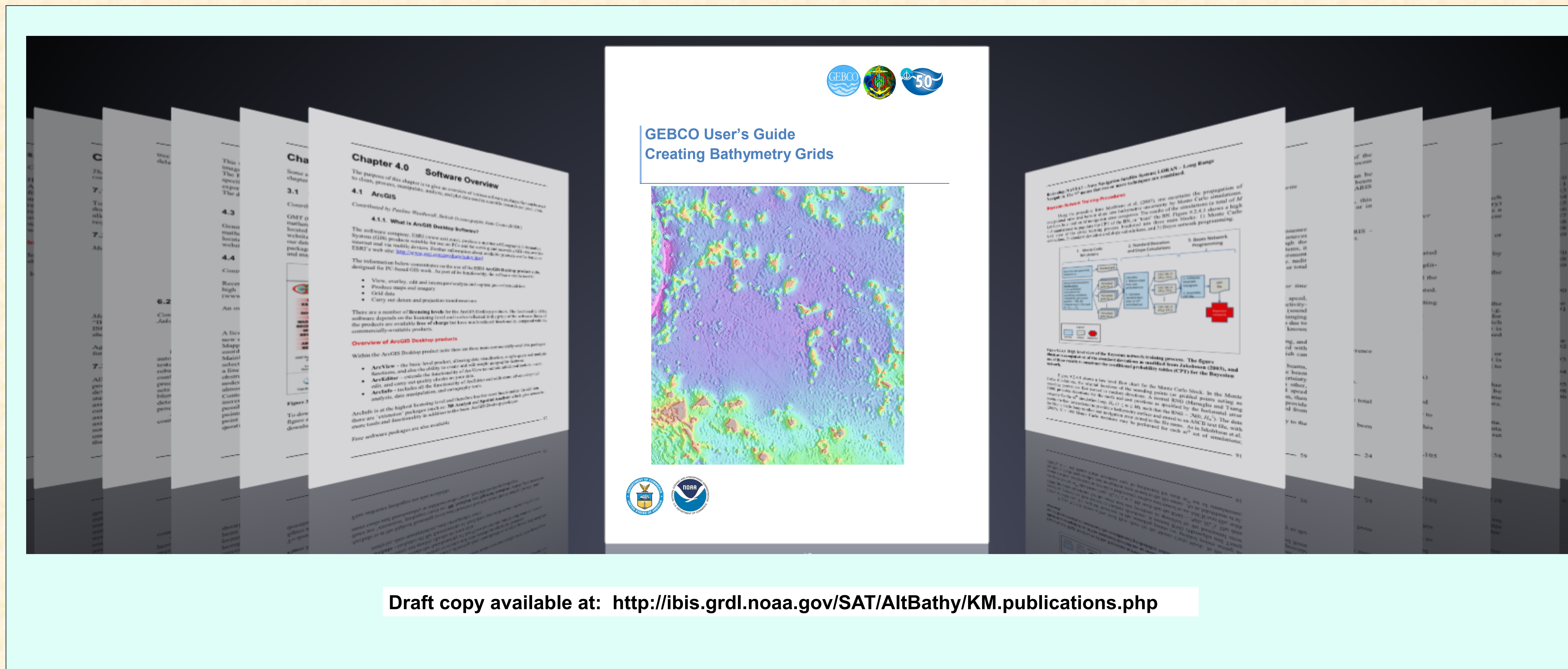
- The cookbook has become the "GEBCO User's Guide: Creating Bathymetry Grids"
- Step-by-step manual enables users to prepare and grid data for inclusion in GEBCO bathymetry products
- Contributors are scientific experts from international research organizations, universities, governments, and companies
- The guide is a "living document-" as new contributions come in, the guide is updated electronically
- The guide will be made freely available on the GEBCO website.

Progress to date

- The Users's Guide was created in Microsoft Word and converted into a PDF file that enables bookmark navigation
- As additional contributions are made, the Microsoft Word document is updated and a new PDF file with updated bookmarks is created
- A draft of the GEBCO User's Guide has been developed
- Researchers from a dozen institutions have submitted contributions which have been incorporated into the guide as chapters

Work to be done

- Obtain more contributions
- Complete chapters
- Transition from draft version to working document
- Make working document available on GEBCO website



Draft copy available at: <http://ibis.grdl.noaa.gov/SAT/AltBathy/KM.publications.php>

Cookbook Working Group

- | | |
|----------------------------|---------------------------------------|
| Nastia Abramova | Dave Monahan |
| Chris Amante | Eric Moussat |
| James Braud | Norbert Ott |
| Juan Brown | Tony Pharaoh |
| Barry Eakins | William Rankin |
| Paul Elmore | Hans Werner Schenke |
| Robin Falconer | Walter Smith |
| Chris Fox | Shin Tani |
| Bruce Goleby | Lisa Taylor |
| John Hall | Paola Travaglini |
| Rob Hare | Jesse Varner |
| Benjamin Hell | John VonRosenberg |
| Colin Jacobs | Pauline Weatherall |
| Martin Jakobsson | Rochelle Wigley |
| Izabel Jeck | Jin Ji Ye |
| Megan Jones | |
| Marie-Francoise Lalancette | NOTE: You are welcome to join! |
| Matt Love | Please contact |
| Karen Marks | Karen.Marks@noaa.gov |
| Mark Masry | |

Contributing Institutions

- Contributors:
- NOAA Laboratory for Satellite Altimetry
<http://ibis.grdl.noaa.gov>
 - Center for Coastal & Ocean Mapping
Joint Hydrographic Center
University of New Hampshire
<http://ccom.unh.edu>
 - Cooperative Institute for Research in Environmental Sciences (CIRES)
University of Colorado at Boulder
NOAA National Geophysical Data Center
<http://www.ngdc.noaa.gov>
 - Naval Research Laboratory
<http://www.nrl.navy.mil>
 - Geological Survey of Israel
<http://www.gsi.gov.il>
 - Canadian Hydrographic Service
<http://www.charts.gc.ca>
 - British Oceanographic Data Centre (BODC)
<http://www.bodc.ac.uk>
 - Department of Geology and Geochemistry
Stockholm University
<http://www.su.se>
 - Directorate of Hydrography and Navigation (DHN)
Center of Hydrography and Navigation (CHM)
Brazilian Navy
<http://www.mar.mil.br/dhn/>
 - CARIS Geospatial Software Solutions
<http://www.caris.com>
 - International Hydrographic Bureau
<http://www.ihc-ohi.net>
 - Geological Institute of Russian Academy of Sciences
Laboratory of Geomorphology and Ocean Floor Tectonics
<http://atlantic.ginras.ru/index.html>

Table of Contents

Table of Contents	3
List of Figures	6
List of Tables	7
Chapter 1.0 Purpose	8
Chapter 2.0 Introduction	9
Chapter 3.0 Gathering Software	10
3.1 Generic Mapping Tools	10
Chapter 4.0 Software Overview	12
4.1 ArcGIS	12
4.1.1. What is ArcGIS Desktop Software?	12
4.1.2. Is the software free, what licenses are available and how can you access the software?	13
4.1.3. What type of computer platform does it run on?	13
4.1.4. What does the software do?	13
ArcGIS Desktop application packages - what are they and what do they do?	13
In what formats and structures does ESRI ArcGIS Desktop software store data?	14
How do you work with your data in ArcGIS Desktop packages - do you have to reformat it?	16
Managing your data sets	17
Can you create a 3D surface from your source data sets?	18
Viewing and editing your data in ArcMap	20
How can I get help with using the software?	23
4.2 CARIS HIPS (Hydrographic Information Processing System)	23
4.2.1 Introduction	23
4.2.2 Acknowledgements	24
4.2.3 HIPS Workflow	24
4.2.4 Project Data Tree and General Information	25
4.2.5 HIPS Workflow - Detailed	27
4.3 Generic Mapping Tools (GMT)	48
4.4 r2v, Surfer, Global Mapper	48
4.4.1 Able Software Corporation's r2v (raster to vector)	48
4.4.2 Global Mapper Software LLC - Global Mapper 12	48
4.4.3 Golden Software Inc. Surfer® Version 9	49
Grid Construction	49
Chapter 5.0 Gathering Data	52
5.1 NGDC Bathymetry Data	52
5.2 JAMSTEC Data	52
Chapter 6.0 Data Cleaning	59
6.1 Quality Assessment	59
6.1.1 Sources of uncertainty	59
Elevation value	59
Morphologic change since data collection	60

Overview: Table of Contents

Data not measuring ground surface	60
6.1.2 How to determine data uncertainty	61
6.2 Data Cleaning Techniques	61
6.2.1 Automatic (non-interactive) data cleaning	61
6.2.2 Manual (interactive) data cleaning	61
6.2.3 Clipping to polygon or elevation value (e.g., zero)	62
6.2.4 Common multibeam swath sonar errors	62
Tracking water column noise	62
Roll-over on inward-facing steep slopes	63
Anomalies on outward-facing slopes	63
Navigation missing on first ping	63
Inaccurate sound speed profile used	63
6.2.5 Common lidar errors	63
Bomb craters	63
Vegetation and buildings	64
Water-surface values	64
6.3 Data Validation	64
References	64
6.4 Use of uncertainty surfaces	65
6.5 Validation Procedures	65
Chapter 7.0 Metadata Documentation	66
7.1 Introduction	66
7.2 Metadata	66
7.3 Point Data Attribution	66
7.4 Bathymetric Model Attribution	67
Chapter 8.0 Gridding Data	68
8.1 Introduction to gridding	68
8.1.1 Polynomials	68
8.1.2 Near-neighbor searches	68
8.1.3 Triangulation	68
8.1.4 Splines	68
8.1.5 Kriging	68
8.2 Examples of gridding methods	68
8.2.1 Gridding JAMSTEC multibeam data	68
8.2.2 GMT Surface and Neareighbor	69
8.2.3 GMT Triangulate	70
8.2.4 Spline pyramid	70
8.2.5 Kriging	70
8.2.6 Spline Interpolation	70
8.2.7 Global Mapper	72
8.2.8 r2v	72
8.2.9 Surfer	72
8.2.10 Gridding in ArcMap	73
Importing XYZ file in ArcMap	73
Reprojecting the data	75

Additional content is welcomed!

Defining cell resolution for the grid	76
Creating a gridded surface	80
Comparison with original data values	83
8.3 Testing of gridding methods	85
8.3.1 Distance-to-control	85
8.3.2 Histograms	85
8.3.3 Statistical tests	85
Chapter 9.0 Uncertainty	86
9.1 Sources of uncertainty	86
9.2 Measuring uncertainty	87
9.2.1 Methods of quality assessment, artifacts	87
9.2.2 Comparisons with multibeam	87
Local	87
Regional	87
Global	87
9.2.3 Monte Carlo Technique	87
9.2.4 Bayesian Network Technique	88
Bayesian Network Design and Access	89
Bayesian Network Training Procedures	91
Operational Flow	94
9.2.5 Windowed Regression with Kriging Corrections	95
Linear Smoothing by Locally Weighted Regression (Loess)	95
Combining windowing with ordinary kriging corrections	98
9.2.6 Error Growth Model	104
9.2.7 Split-Sample Approach	105
SS_UNC	108
SS_UNC_SCM	117
RSPLIT	127
9.2.8 Spectral analysis	133
9.2.9 Slope	133
9.2.10 Kriging discussion and cautionary note	133
9.3 Sharing uncertainty results	133
9.3.1 ASCII files	133
9.3.2 netCDF files	133
9.3.3 "BAG" files	133
Chapter 10.0 Summary	134
Chapter 11.0 Acknowledgements	136
Chapter 12.0 References	136
Chapter 13.0 Appendices	137
13.1 Datums and projections	137
13.1.1 Coastline challenges	137
13.2 Software workflows	137
Chapter 14.0 Glossary	138
14.1 S-44 Terms	138

Contributed

In progress

Input needed