

# General Bathymetric Chart of the Oceans (GEBCO)

## GEBCO's Data Sets and Products

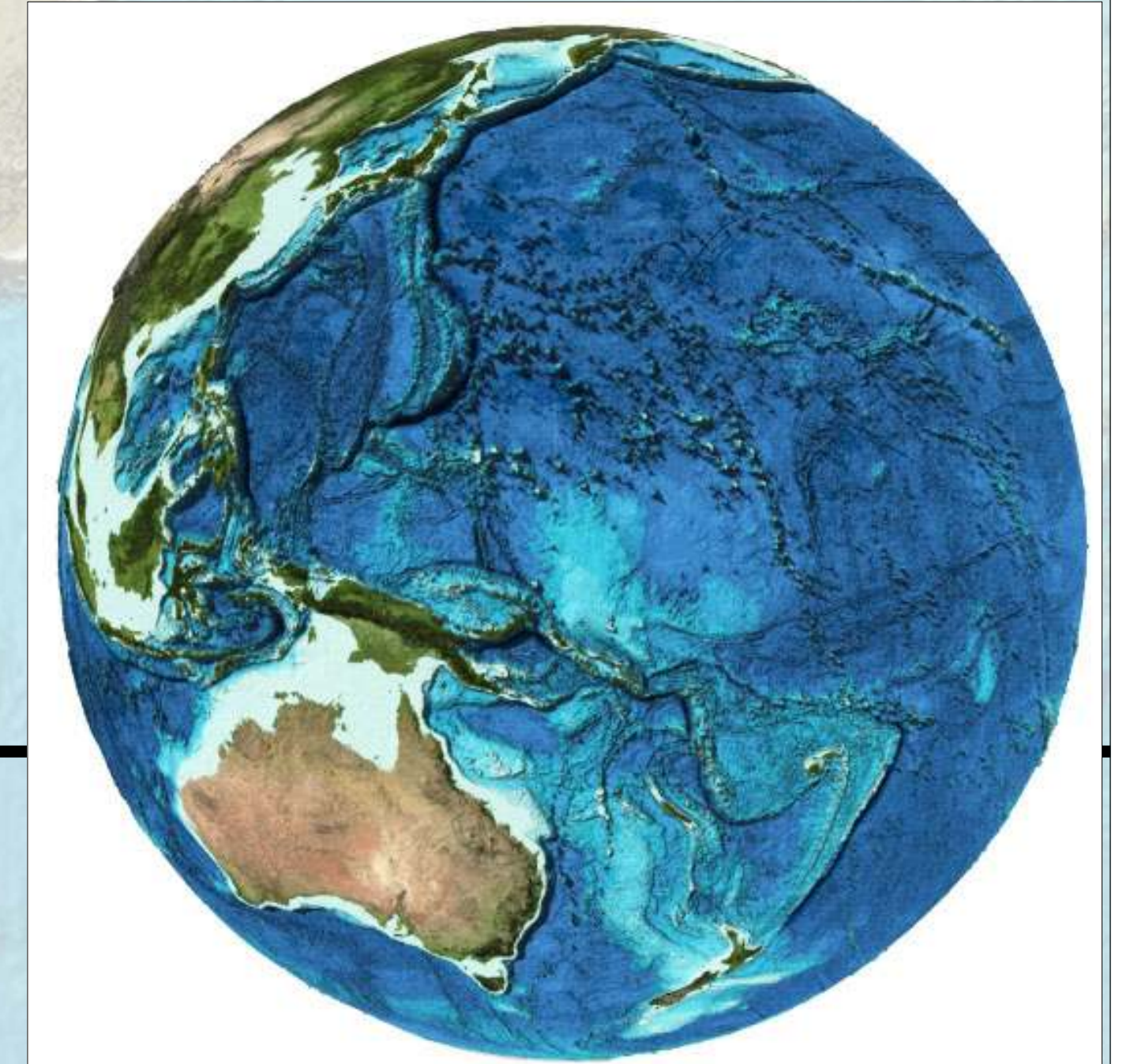


On behalf of GEBCO: Pauline Weatherall, GEBCO Digital Atlas Manager, British Oceanographic Data Centre (BODC), Liverpool, UK, (paw@bodc.ac.uk)

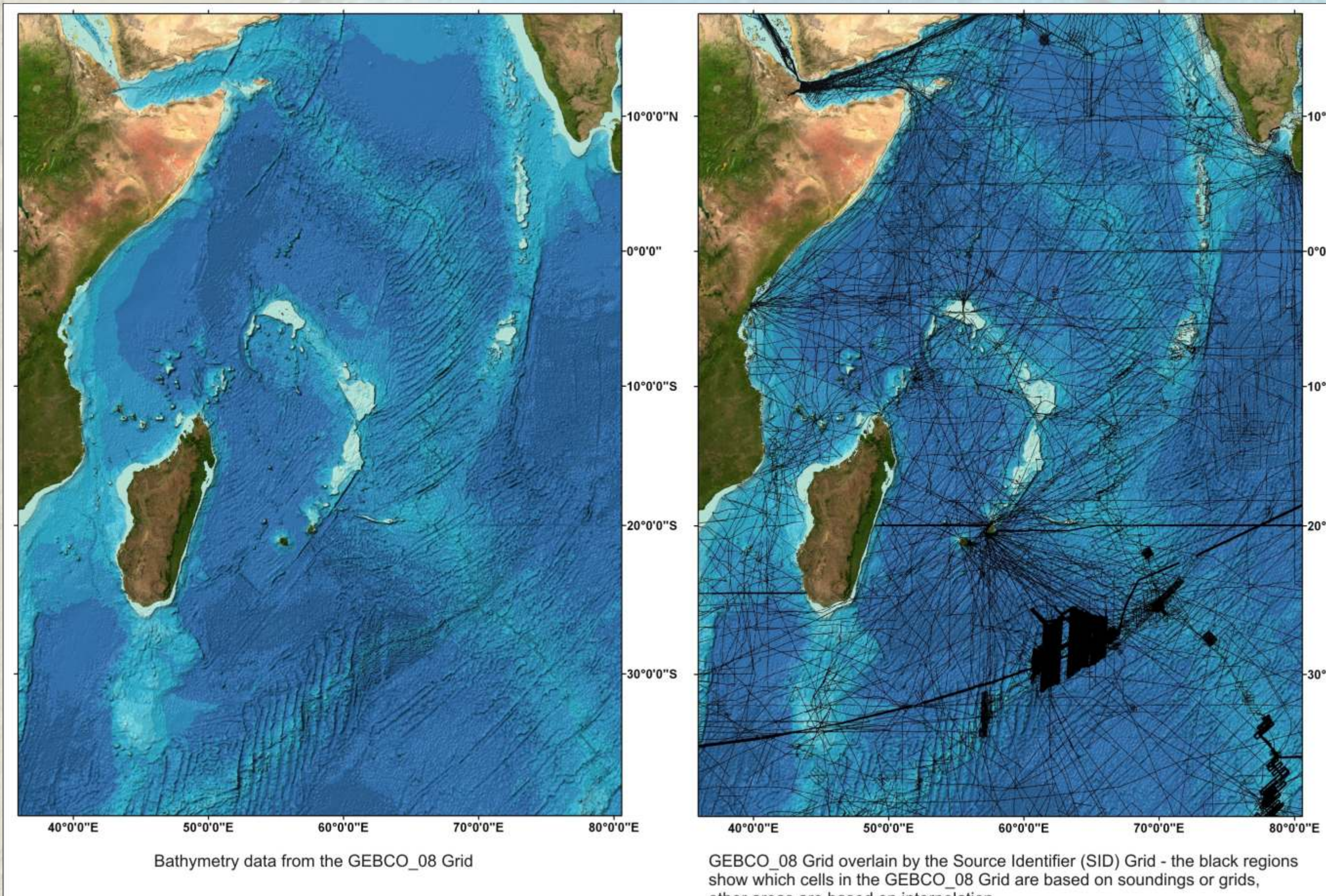
The GEBCO community consists of an international group of experts in ocean mapping whose aim is to develop the most authoritative publically-available bathymetric data sets for the world's oceans. GEBCO operates under the joint auspices of the International Hydrographic Organization (IHO) and Intergovernmental Oceanographic Commission (IOC) of UNESCO.

Through the work of its sub-committees and working groups, GEBCO makes available a range of bathymetric data sets and products including gridded bathymetric data sets, the GEBCO Digital Atlas, the GEBCO world map and the GEBCO Gazetteer of Undersea Feature Names. Further details about some of GEBCO's data sets and products are given below.

Find out more about GEBCO: [www.gebco.net](http://www.gebco.net)



### GEBCO's Gridded Data Sets



The GEBCO\_08 Grid is a global terrain model at 30 arc-second intervals and is GEBCO's latest bathymetric product. It has largely been developed from a database of ship-track soundings with interpolation between soundings guided by satellite-derived gravity data. Grids developed by other methods are included in some areas. For example GEBCO benefits from the contributions from regional mapping groups such as the International Bathymetric Chart of the Arctic Ocean (IBCAO).

The GEBCO\_08 Grid is accompanied by a Source Identifier (SID) Grid. This indicates which of the cells in the GEBCO\_08 Grid are based on soundings or existing grids and which have been interpolated. Work is underway to provide metadata for these source data sets via the SID Grid.

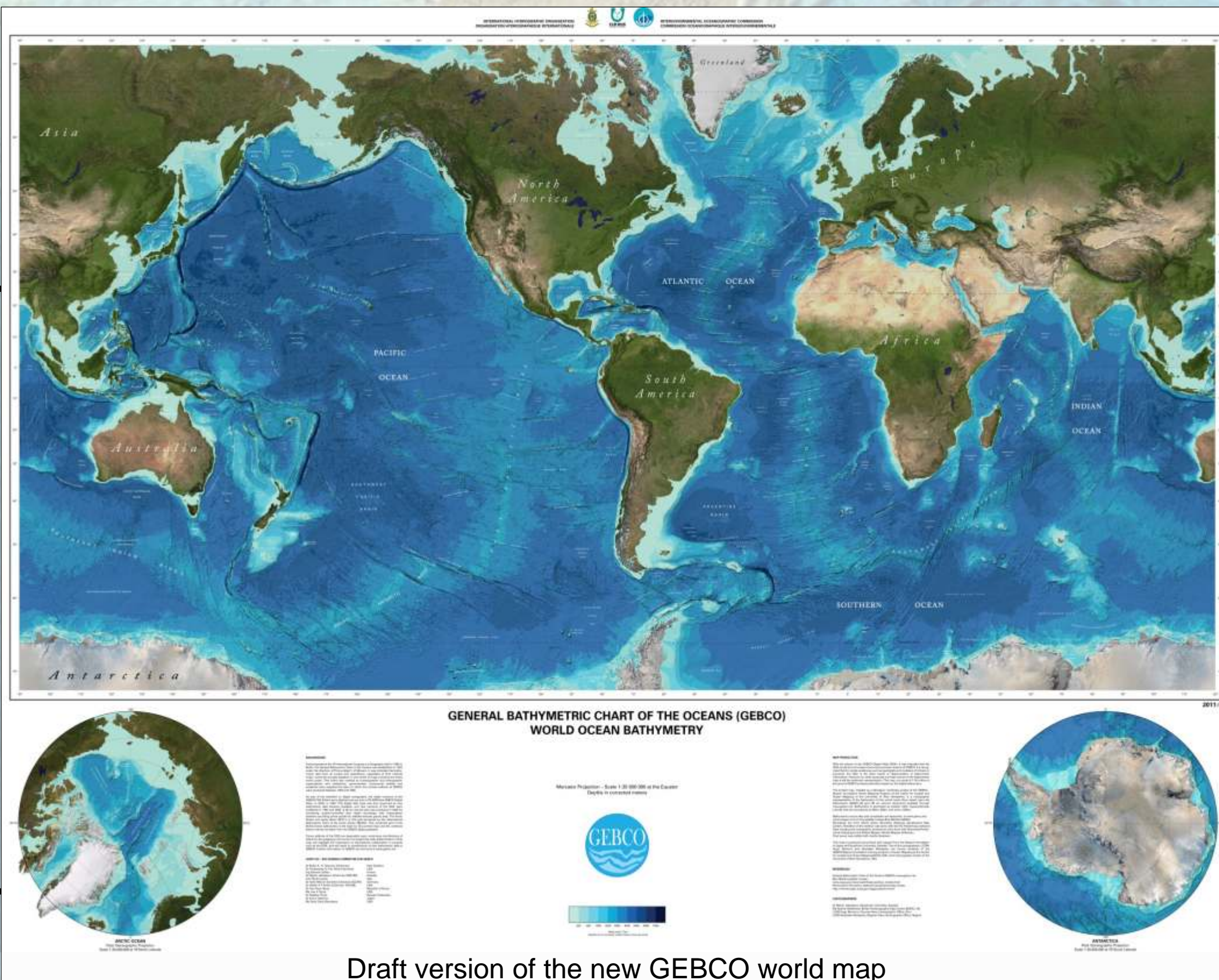
It is intended to update the GEBCO\_08 Grid on a regular basis as new data sets become available.

GEBCO's grids are available to download via the internet. Free software is available to view and access the data sets in ASCII and netCDF. The grids are also available as part of the GEBCO Digital Atlas.

[www.gebco.net/data\\_and\\_products/gridded\\_bathymetry\\_data/](http://www.gebco.net/data_and_products/gridded_bathymetry_data/)

### Undersea Feature Names

The GEBCO Sub-Committee on Undersea Feature Names (SCUFN) maintains and makes available a digital gazetteer of the names, generic feature type and geographic location of features on the ocean floor. The data set is currently made available in spreadsheet form; work is in progress to develop versions of the data set in other formats.



[www.gebco.net/data\\_and\\_products/undersea\\_feature\\_names/](http://www.gebco.net/data_and_products/undersea_feature_names/)

### GEBCO world map

The world map shows the shape of the world ocean floor and displays the names of major undersea features. Work on the creation of the GEBCO world map began as a laboratory workshop project of the Nippon Foundation/GEBCO Training Project. Originally published in 2006, a new version, based on the latest version of the GEBCO\_08 Grid, is in preparation.

[www.gebco.net/data\\_and\\_products/gebco\\_world\\_map/](http://www.gebco.net/data_and_products/gebco_world_map/)

### Web Map Service (WMS)

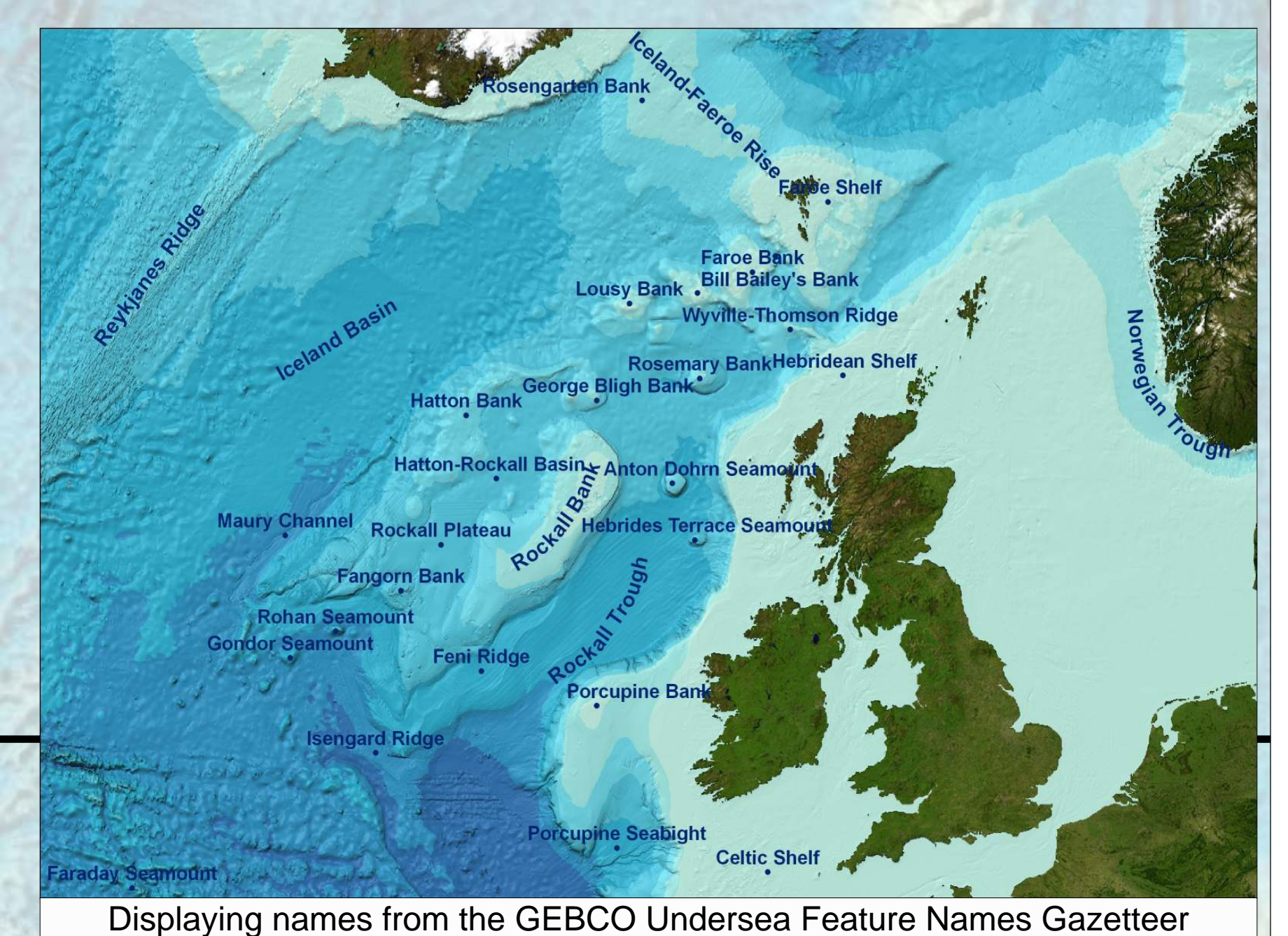
The GEBCO\_08 Grid is available as a Web Map Service (WMS), a means of accessing geo-referenced map images over the internet. The WMS can be viewed in a web browser or Geographic Information System (GIS) and incorporated in your own web application.

[www.gebco.net/data\\_and\\_products/gebco\\_web\\_services/](http://www.gebco.net/data_and_products/gebco_web_services/)

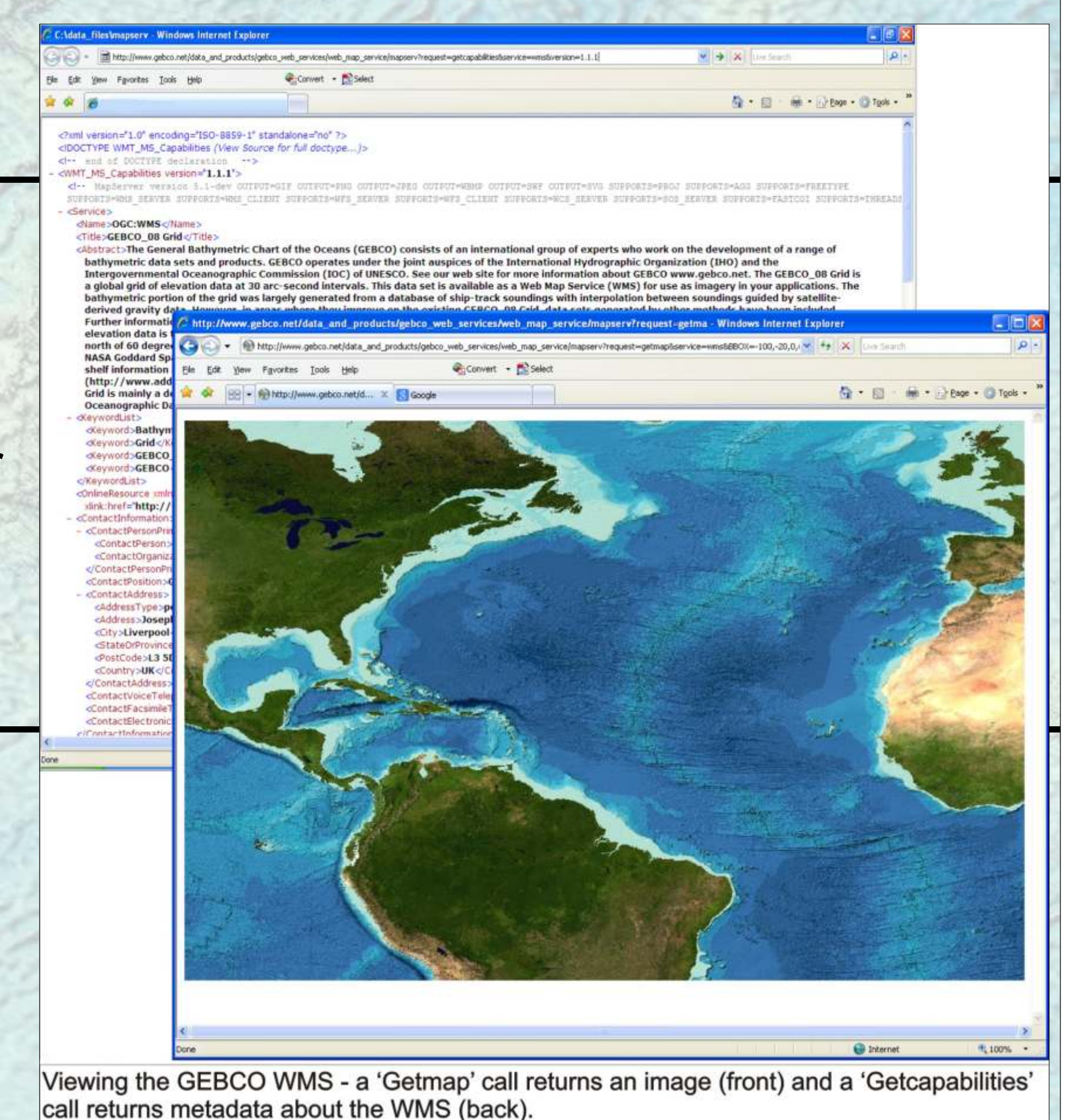
### GEBCO Digital Atlas (GDA)

The GDA is a two-volume DVD and CDROM set, which contains a collection of GEBCO's grids, bathymetric contour, trackline control and coastline data sets. It comes with a software interface for viewing and accessing the data sets in variety of formats.

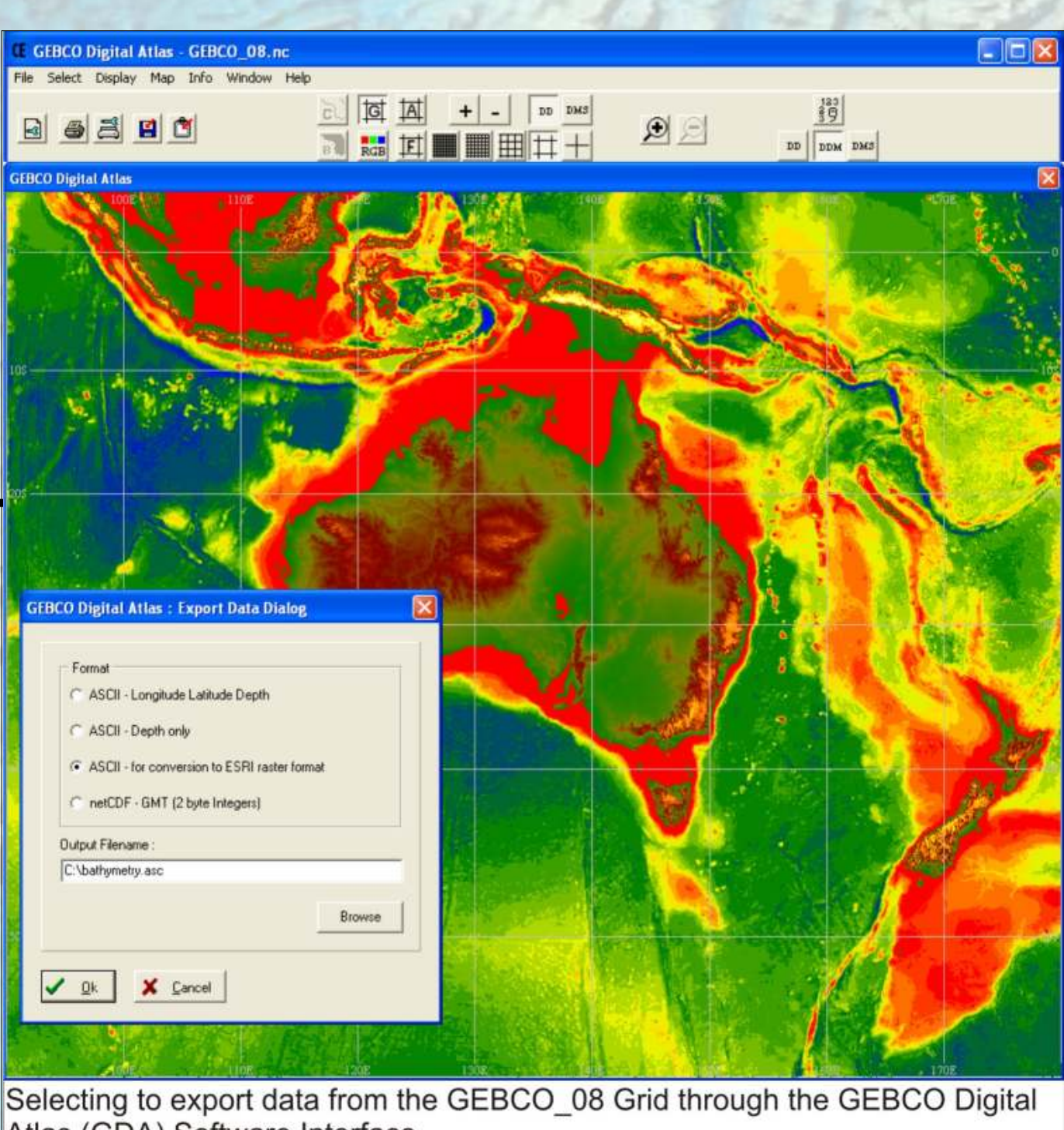
[www.gebco.net/data\\_and\\_products/gebco\\_digital\\_atlas/](http://www.gebco.net/data_and_products/gebco_digital_atlas/)



Displaying names from the GEBCO Undersea Feature Names Gazetteer



Viewing the GEBCO WMS - a 'Getmap' call returns an image (front) and a 'Getcapabilities' call returns metadata about the WMS (back).



Selecting to export data from the GEBCO\_08 Grid through the GEBCO Digital Atlas (GDA) Software Interface